



**Illinois Department of Transportation**  
**Division of Aeronautics**

Amended: 2006-09-07

PAGE **vi**

<b>Associated City - Hospital</b>	<b>Identifier</b>	<b>Page</b>
Lake Forest – Lake Forest Hospital	45IL	71
Lawrenceville – Lawrence Co. Mem. Hosp.	1LL1	72
Libertyville – Condell Medical Center	Ø2IS	73
Lincoln – Abraham Lincoln Mem. Hosp.	38IL	74
Lindenhurst – Vista Surgery Center	8IS8	75
Litchfield – St. Francis Hospital	73IL	76
Macomb – McDonough District Hospital	46IL	77
Marion – Heartland Regional Medical Center	4IL1	78
Marion – VA Medical Center	58IS	79
Maryville – Anderson Hospital	8IS9	80
Mattoon – Sarah Bush Lincoln Health Ctr.	21IL	81
Maywood – Loyola University Medical Ctr.	ØIL1	82
McHenry – Northern Illinois Medical Center	5IS8	83
McLeansboro – Hamilton Memorial Hospital	ØILØ	84
Melrose Park – Gottlieb Memorial Hospital	14LL	85
Mendota – Mendota Community Hospital	74IL	86
Moline – Trinity Medical Center 7th Street	IS97	87
Monmouth – Community Medical Center	LLØ1	88
Morris – Morris Hospital	LLØ4	89
Morrison – Community Hospital	5LL9	90
Mt. Carmel – Wabash General Hospital	67IS	91
Mt. Vernon – Crossroads Community Hosp.	75IL	92
Mt. Vernon – Good Samaritan Hospital	6IS4	93
Murphysboro – St. Joseph Memorial Hosp.	IS38	94
Naperville – Edward Hospital	LL11	95
Nashville – Washington County Hospital	2LL8	96
Normal – BroMenn Health Care	IL25	97
Oak Lawn – Advocate Christ Health Care	IL77	98
Olney – Richland Memorial Hospital	8LL4	99
Olympia Fields – St. James Hospital	IS3Ø	100
Ottawa – Community Hospital of Ottawa	LL25	101
Palos Heights – Palos Community Hospital	2ØIL	102
Pana – Pana Community Hospital	LL29	103
Paris – Paris Community Hospital	8LL5	104
Park Ridge – Lutheran General Hospital	71IL	105



**Illinois Department of Transportation**  
**Division of Aeronautics**

Amended: 2006-09-07

PAGE **vii**

<b>Associated City - Hospital</b>	<b>Identifier</b>	<b>Page</b>
Peoria – Methodist Medical Center of Illinois	IL04	106
Peoria – Proctor Hospital	2IS1	107
Peoria – OSF St. Francis Medical Center	LL37	108
Peru – Illinois Valley Community Hospital	IS49	109
Pittsfield – Illini Community Hospital	IS44	110
Pontiac – St. James Hospital	LL42	111
Princeton – Perry Memorial Hospital	IS67	112
Quincy – Blessing Hospital	ØIS8	113
Red Bud – Red Bud Regional Hospital	78IS	114
Robinson – Crawford Memorial Hospital	35LL	115
Rochelle – Rochelle Community Hospital	IL41	116
Rock Island – Trinity Medical Center West	ØISØ	117
Rockford – Rockford Memorial Hospital	LL83	118
Rockford – St. Anthony Medical Center	LL84	119
Rockford – Swedish American Hospital	Ø9IS	120
Salem – Salem Township Hospital	5IL9	121
Sandwich – Valley West Community Hosp.	ØLL7	122
Shelbyville – Shelby Memorial Hospital	IL23	123
Silvis – Genesis Med. Cntr.-Illini Campus	2LL6	124
Springfield – Memorial Medical Center	54LL	125
Springfield – St. John’s Hospital	97IS	126
Spring Valley – St. Margaret’s Hospital	3LL7	127
Staunton – Community Memorial Hospital	IS21	128
Sterling – CGH Medical Center	IS46	129
Streator – St. Mary’s Hospital	IS29	130
Urbana – Carle Foundation Hospital	IS96	131
Vandalia – Fayette County Hospital	IL26	132
Watskea – Iroquois Memorial Hospital	IS89	133
Waukegan – Vista Medical Center West	7LL1	134
Waukegan – Vista Medical Center East	7LL2	135
West Frankfort – Miners Memorial Health Ctr.	8LL8	136
Winfield – Central DuPage Hospital	IS39	137
Woodstock – Memorial Medical Center	IL42	138
Zion – Midwestern Regional Medical Center	IL85	139

# Lindenhurst – Vista Surgery Center

8IS8

## NAV

Lat: N 42° 24.8'  
Long: W 88° 03.4'

## COMM

Freq:  
PL: W:  
Ph: 847-356-4700

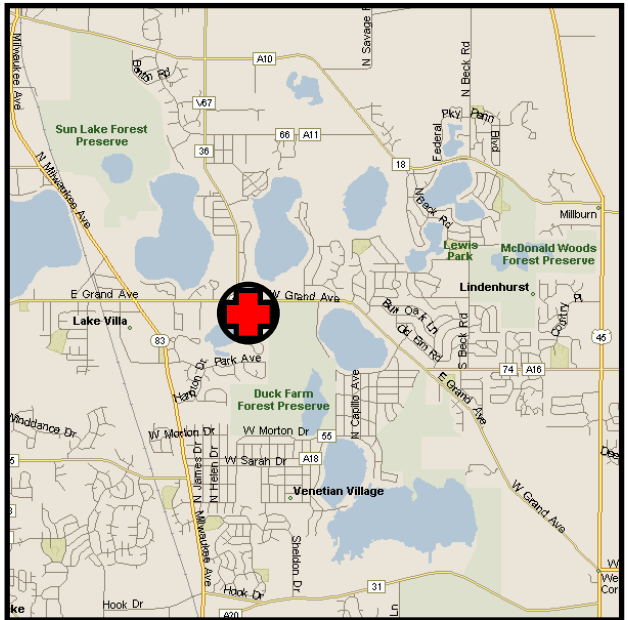
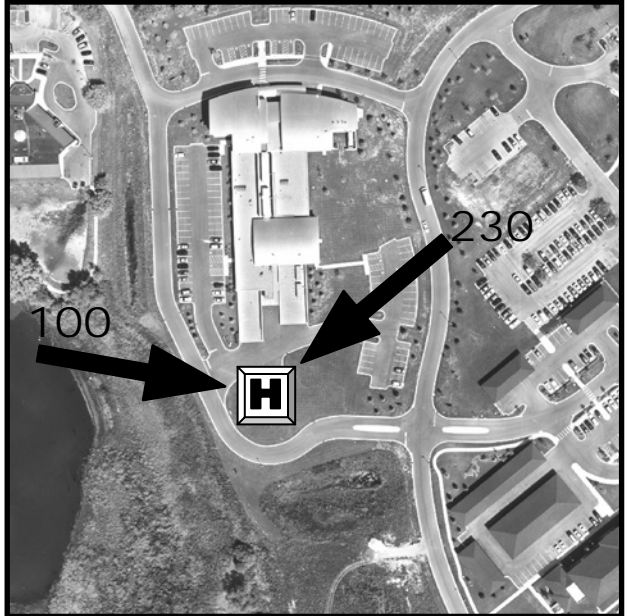
## LZ INFO

Elev:  
809' Surface  
Lighting:  
Perimeter  
Beacon:  
No  
Wind Sock:  
Yes – Lighted

## FACILITY

Victory Ambulatory  
Services  
1050 Red Oak Ln.  
Lindenhurst, IL 60046

## SPECIAL NOTES:



Amended: 2006-09-07

PAGE 75

# Lindenhurst – Vista Surgery Center

8IS8

# Quincy – Blessing Hospital

ØIS8

## NAV

Lat: N 39° 56.2'  
Long: W 91° 23.9'

## COMM

Freq: 155.340  
PL: 88.5 W:08  
Ph: 217-223-8400

## LZ INFO

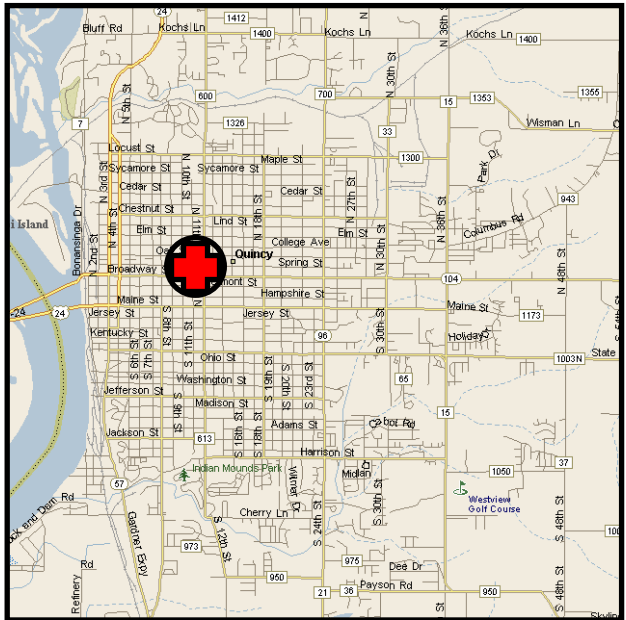
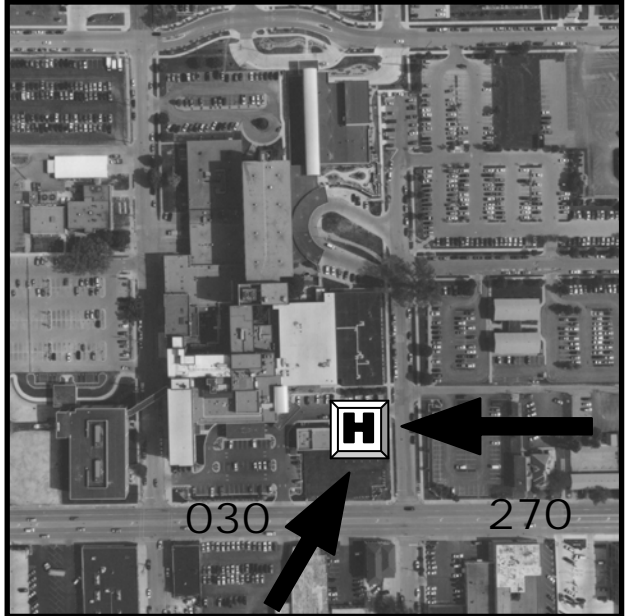
Elev:  
625' Surface  
Lighting:  
Perimeter, Flood  
Beacon:  
Yes  
Wind Sock:  
Yes – Lighted

## FACILITY

Blessing Hospital  
P.O. Box 7005  
Quincy, IL 62305

## SPECIAL NOTES:

Air Evac 5 Base  
Phone: 217-222-9632  
Based Helicopter  
Coordinate Pad Use



Amended: 2006-09-07

PAGE 113

# Waukegan – Vista Medical Center West

7LL1

## NAV

Lat: N 42° 21.6'  
Long: W 87° 51.9'

## COMM

Freq: 155.400  
PL: 203.5 W:38  
Ph: 847-249-3900

## LZ INFO

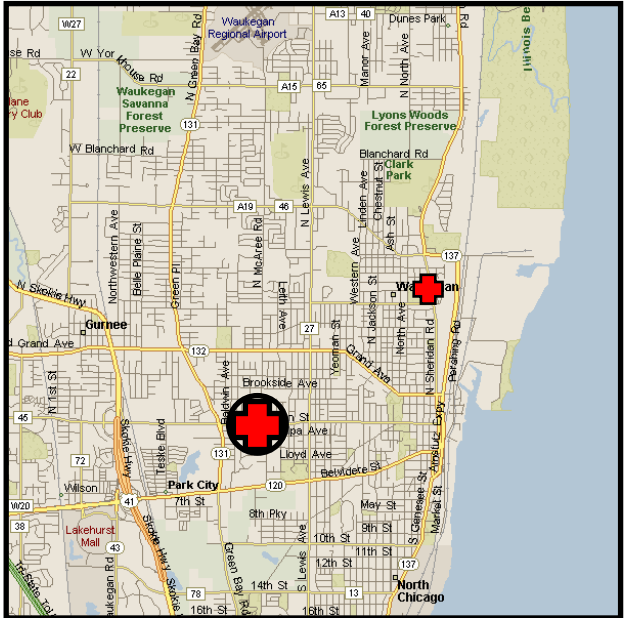
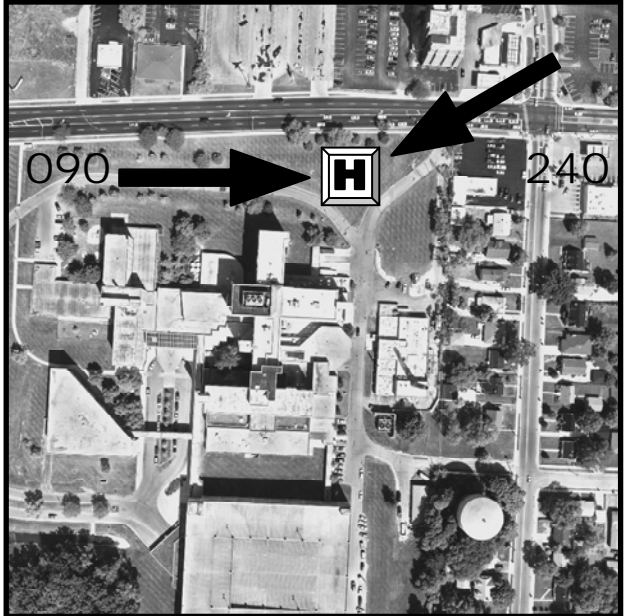
Elev:  
727' Surface  
Lighting:  
Perimeter  
Beacon:  
Yes  
Wind Sock:  
Yes – Lighted

## FACILITY

St. Therese Medical  
Center  
2615 W. Washington  
Waukegan, IL 60085

## SPECIAL NOTES:

**CAUTION: Pad has Large  
Crown in Center**



Amended: 2006-09-07

PAGE 134

# Waukegan – Vista Medical Center West

7LL1

# Waukegan – Vista Medical Center East

7LL2

## NAV

Lat: N 42° 22.7'  
Long: W 87° 50.0'

## COMM

Freq: 155.400  
PL: 203.5 W:38  
Ph: 847-360-3000

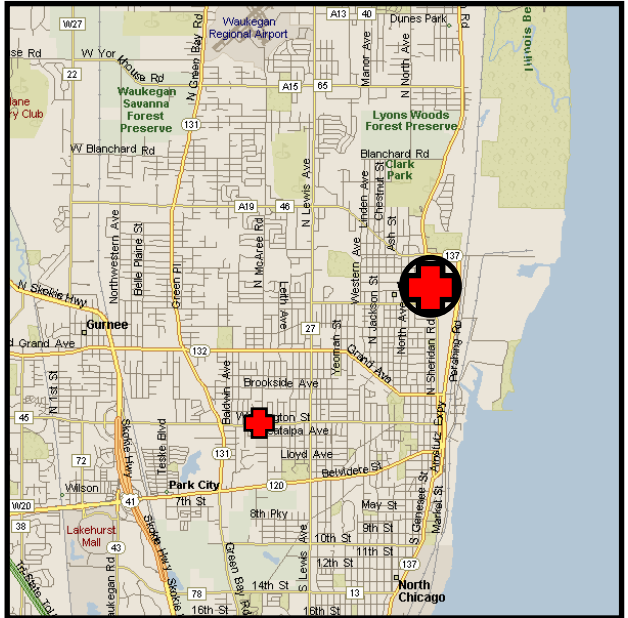
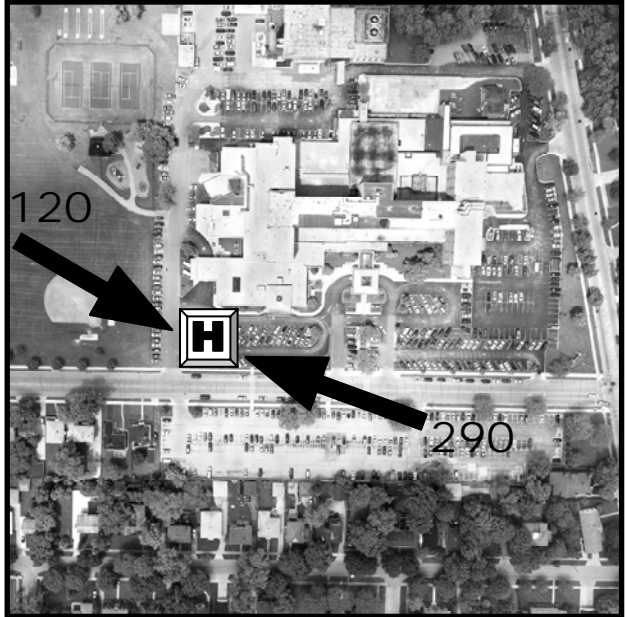
## LZ INFO

Elev:  
624' Surface  
Lighting:  
Flood  
Beacon:  
Yes  
Wind Sock:  
Yes – Lighted

## FACILITY

Victory Memorial Hospital  
1324 N. Sheridan Rd.  
Waukegan, IL 60085

## SPECIAL NOTES:



Amended: 2006-09-07

PAGE 135