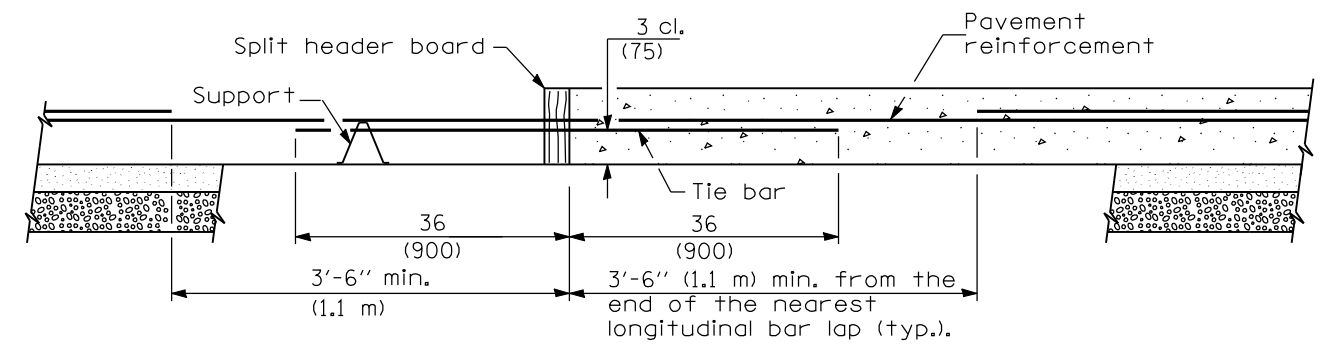
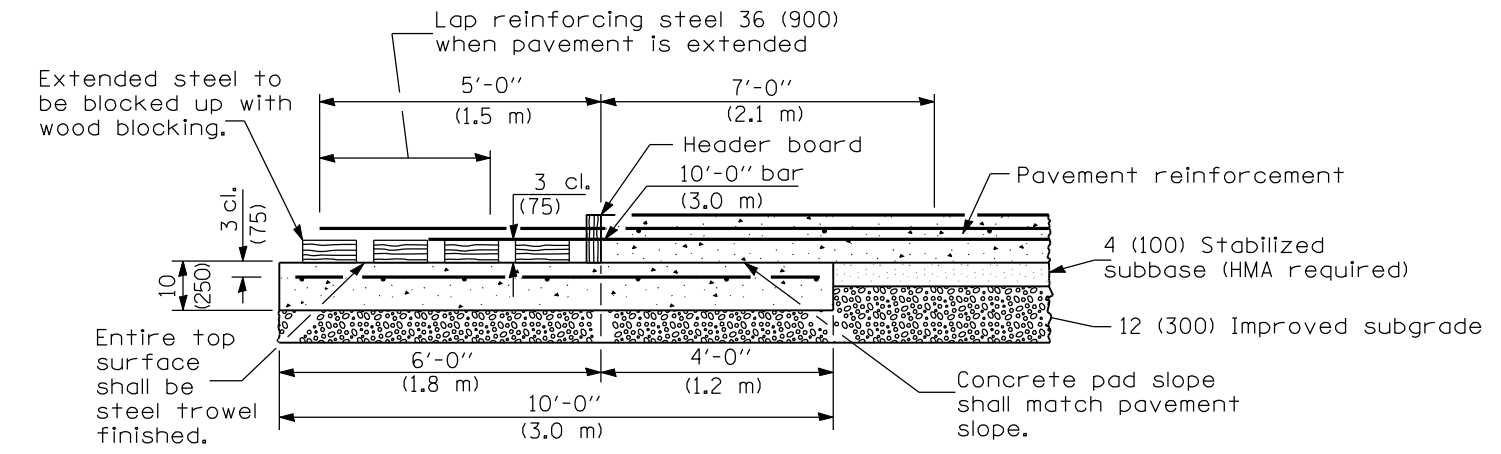


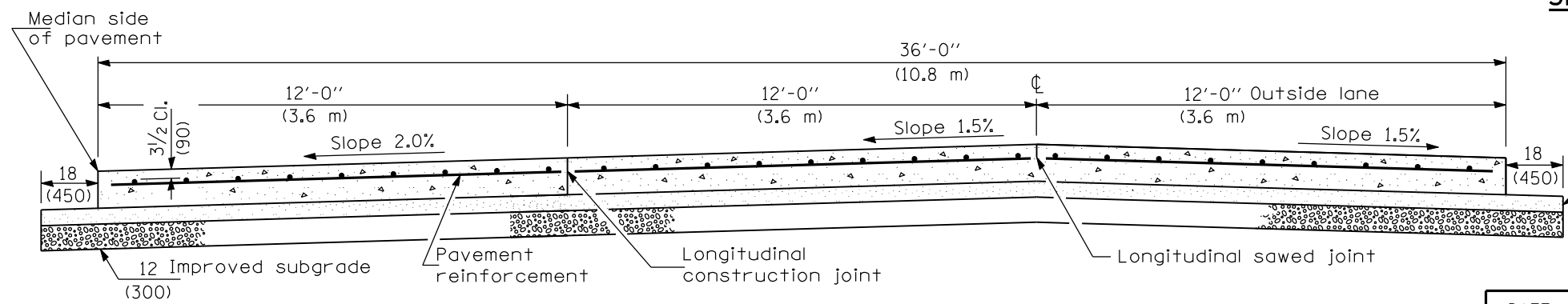
PLAN



TRANSVERSE CONSTRUCTION JOINT



TRANSVERSE TERMINAL JOINT SECTION B-B



SECTION A-A
(TYPICAL 3-LANE, 1-WAY WITH SHOULDERS)

GENERAL NOTES

- See Standard 421001 for details of pavement reinforcement.
- See Standards 420001 and 420401 for joint details not shown.
- All dimensions are in inches (millimeters) unless otherwise shown.

Illinois Department of Transportation

PASSED January 1, 2008

ENGINEER OF POLICY AND PROCEDURES

APPROVED January 1, 2008

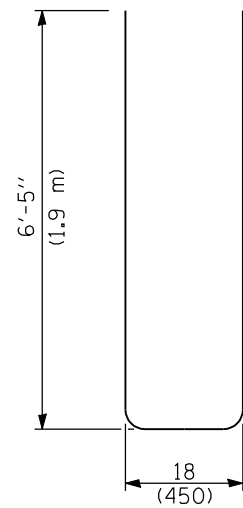
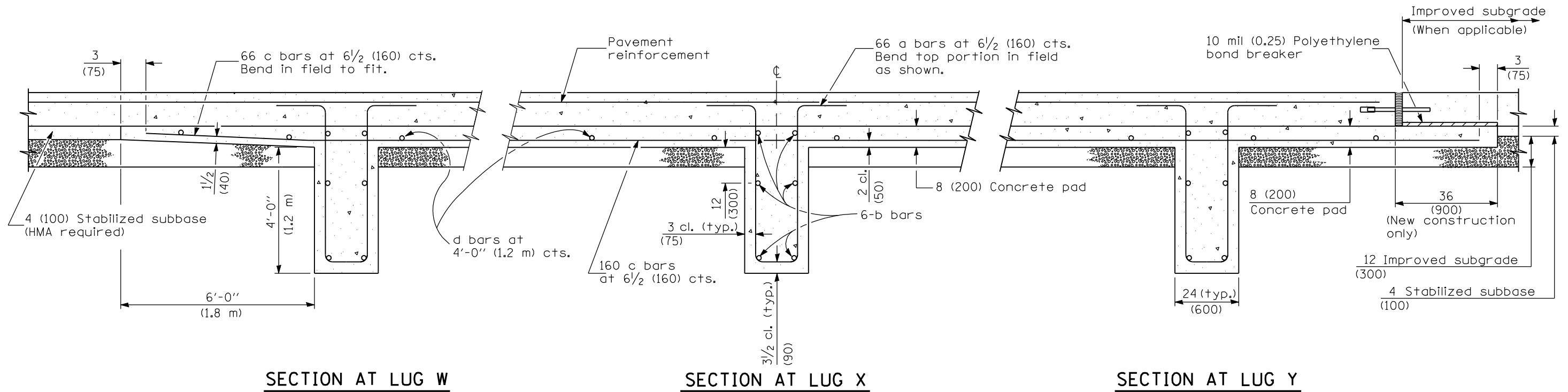
ENGINEER OF DESIGN AND ENVIRONMENT

ISSUED 1-1-97

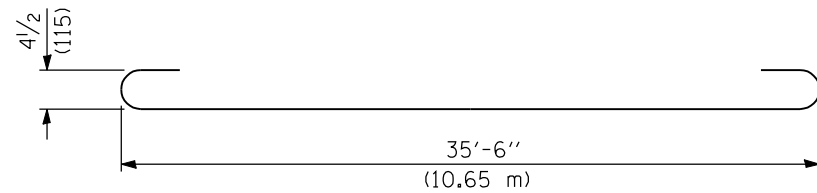
DATE	REVISIONS
1-1-08	Switched units to English (metric). Revised Lug Sys. Table.
1-1-07	Switched to Hot-Mix Asphalt (HMA) terminology.

36' (10.8 m)
CRC PAVEMENT
(WITH LUG SYSTEM)
(Sheet 1 of 2)

STANDARD 421206-06



BAR a



BAR b

MATERIALS REQUIRED FOR (1) ONE LUG SYSTEM
(Excluding Pavement Concrete and Pavement Reinforcement)

Bar	No.	Size	Length	Shape
a	198	No. 8 (No. 25)	14'-0" (4.25 m)	
b	18	No. 5 (No. 16)	36'-9" (11.30 m)	
c	198	No. 5 (No. 16)	20'-0" (6.10 m)	
d	42	No. 4 (No. 13)	11'-9" (3.52 m)	

Concrete, cu. yds. (m ³)	96.0 (73.4)
Reinforcing Bars, lbs. (kg)	12,550 (5695)
Concrete Pad, sq. yds. (m ²)	216 (181)
Improved Subgrade, sq. yds. (m ²)	208 (174)

Illinois Department of Transportation
 PASSED January 1, 2008
 ENGINEER OF POLICY AND PROCEDURES
 APPROVED January 1, 2008
 ENGINEER OF DESIGN AND ENVIRONMENT

ISSUED 1-1-97

36' (10.8 m)
CRC PAVEMENT
 (WITH LUG SYSTEM)
 (Sheet 2 of 2)
STANDARD 421206-06