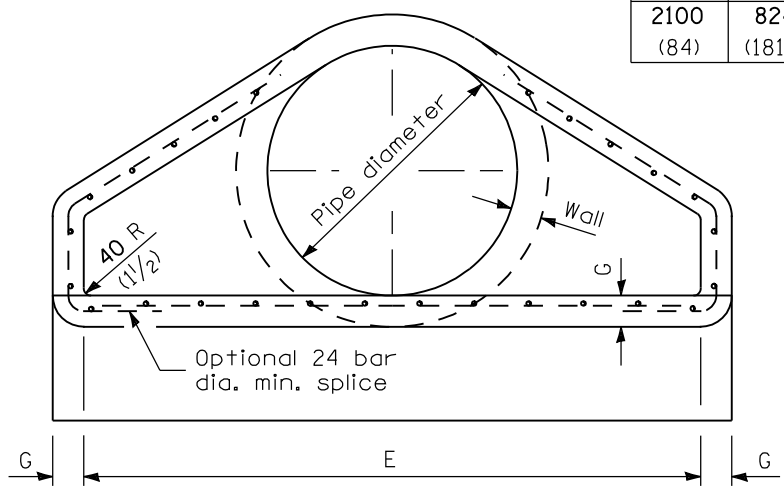


SECTION A-A



END VIEW

PIPE DIA.	APPROX. QTY. kg (lbs)	WALL	A	B	C	D	E	G	R	APPROX. SLOPE
300 (12)	240 (530)	51 (2)	102 (4)	610 (24)	1.241 m (4'-0 7/8")	1.851 m (6'-0 7/8")	610 (24)	51 (2)	229 (9)	1:2.4
375 (15)	335 (740)	57 (2 1/4)	152 (6)	686 (27)	1.168 m (3'-10")	1.854 m (6'-1")	762 (30)	57 (2 1/4)	280 (11)	1:2.4
450 (18)	450 (990)	64 (2 1/2)	229 (9)	686 (27)	1.168 m (3'-10")	1.854 m (6'-1")	914 (36)	64 (2 1/2)	305 (12)	1:2.4
525 (21)	580 (1280)	70 (2 3/4)	229 (9)	889 (35)	965 (38)	1.854 m (6'-1")	1.067 m (3'-6")	70 (2 3/4)	330 (13)	1:2.4
600 (24)	690 (1520)	76 (3)	241 (9 1/2)	1.105 m (3'-7 1/2")	762 (30)	1.867 m (6'-1 1/2")	1.219 m (4'-0")	76 (3)	356 (14)	1:2.5
675 (27)	875 (1930)	83 (3 1/4)	267 (10 1/2)	1.219 m (4'-0")	648 (25 1/2)	1.867 m (6'-1 1/2")	1.372 m (4'-6")	83 (3 1/4)	368 (14 1/2)	1:2.4
750 (30)	995 (2190)	89 (3 1/2)	305 (12)	1.375 m (4'-6")	502 (19 3/4)	1.874 m (6'-1 3/4")	1.524 m (5'-0")	89 (3 1/2)	381 (15)	1:2.5
825 (33)	1450 (3200)	95 (3 3/4)	343 (13 1/2)	1.486 m (4'-10 1/2")	997 (39 1/4)	2.483 m (8'-1 3/4")	1.676 m (5'-6")	95 (3 3/4)	445 (17 1/2)	1:2.5
900 (36)	1860 (4100)	102 (4)	381 (15)	1.6 m (5'-3")	883 (34 3/4)	2.483 m (8'-1 3/4")	1.829 m (6'-0")	102 (4)	508 (20)	1:2.5
1050 (42)	2440 (5380)	114 (4 1/2)	533 (21)	1.6 m (5'-3")	889 (35)	2.489 m (8'-2")	1.981 m (6'-6")	114 (4 1/2)	559 (22)	1:2.5
1200 (48)	2970 (6550)	127 (5)	610 (24)	1.829 m (6'-0")	660 (26)	2.489 m (8'-2")	2.134 m (7'-0")	127 (5)	559 (22)	1:2.5
1350 (54)	3740 (8240)	140 (5 1/2)	686 (27)	1.651 m (5'-5")	889 (35)	2.54 m (8'-4")	2.286 m (7'-6")	140 (5 1/2)	610 (24)	1:2.0
1500 (60)	3960 (8730)	152 (6)	889 (35)	1.524 m (5'-0")	991 (39)	2.515 m (8'-3")	2.438 m (8'-0")	127 (5)	*	1:1.9
1650 (66)	4860 (10710)	165 (6 1/2)	762 (30)	1.829 m (6'-0")	686 (27)	2.515 m (8'-3")	2.591 m (8'-6")	140 (5 1/2)	*	1:1.7
1800 (72)	5680 (12520)	178 (7)	914 (36)	1.981 m (6'-6")	533 (21)	2.514 m (8'-3")	2.743 m (9'-0")	152 (6)	*	1:1.8
1950 (78)	6700 (14770)	191 (7 1/2)	914 (36)	2.286 m (7'-6")	533 (21)	2.819 m (9'-3")	2.896 m (9'-6")	165 (6 1/2)	*	1:1.8
2100 (84)	8240 (18160)	203 (8)	914 (36)	2.299 m (7'-6 1/2")	533 (21)	2.832 m (9'-3 1/2")	3.048 m (10'-0")	165 (6 1/2)	*	1:1.6

* Radius as furnished by manufacturer

GENERAL NOTES

All slope ratios are expressed as units of vertical displacement to units of horizontal displacement (V:H).
All dimensions are in millimeters (inches) unless otherwise shown.

Illinois Department of Transportation

APPROVED January 1, 2007
Ralph E. Anderson
ENGINEER OF BRIDGES AND STRUCTURES

APPROVED January 1, 2007
Michael L. Hine
ENGINEER OF DESIGN AND ENVIRONMENT

ISSUED 1-1-97

DATE	REVISIONS
1-1-07	Soft converted metric reinforcement bars.
1-1-97	Renum. Standard 2449-1.
	Deleted DN symbol.

PRECAST REINFORCED CONCRETE FLARED END SECTION

STANDARD 542301-01