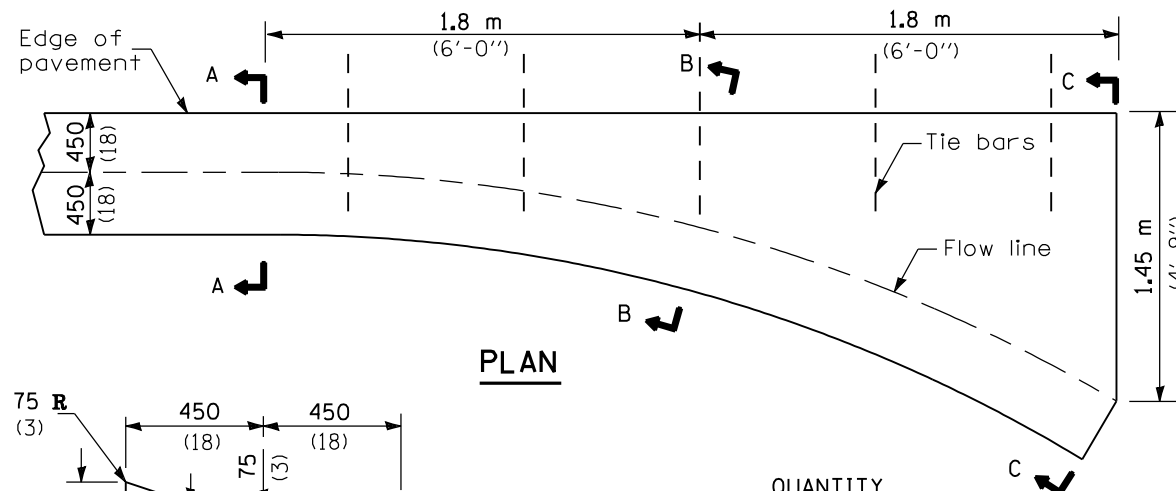
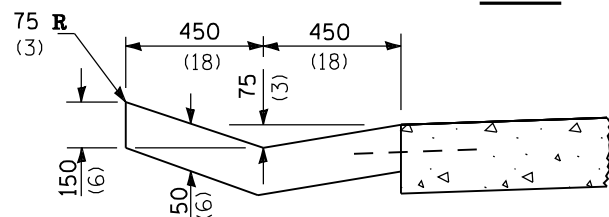


TYPE A GUTTER

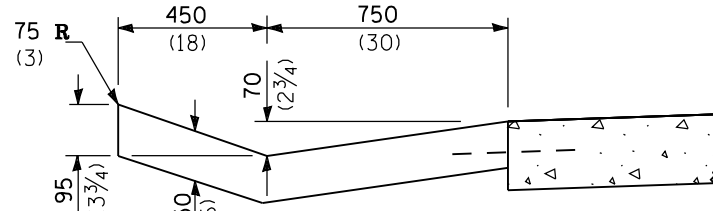


PLAN

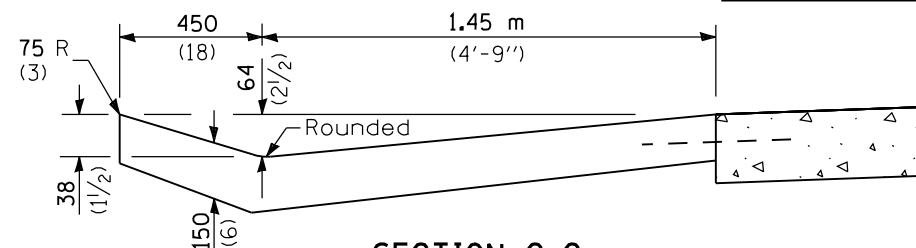


SECTION A-A

QUANTITY
Section C-C to A-A
0.70 m³ (0.92 cu. yd.)
concrete.

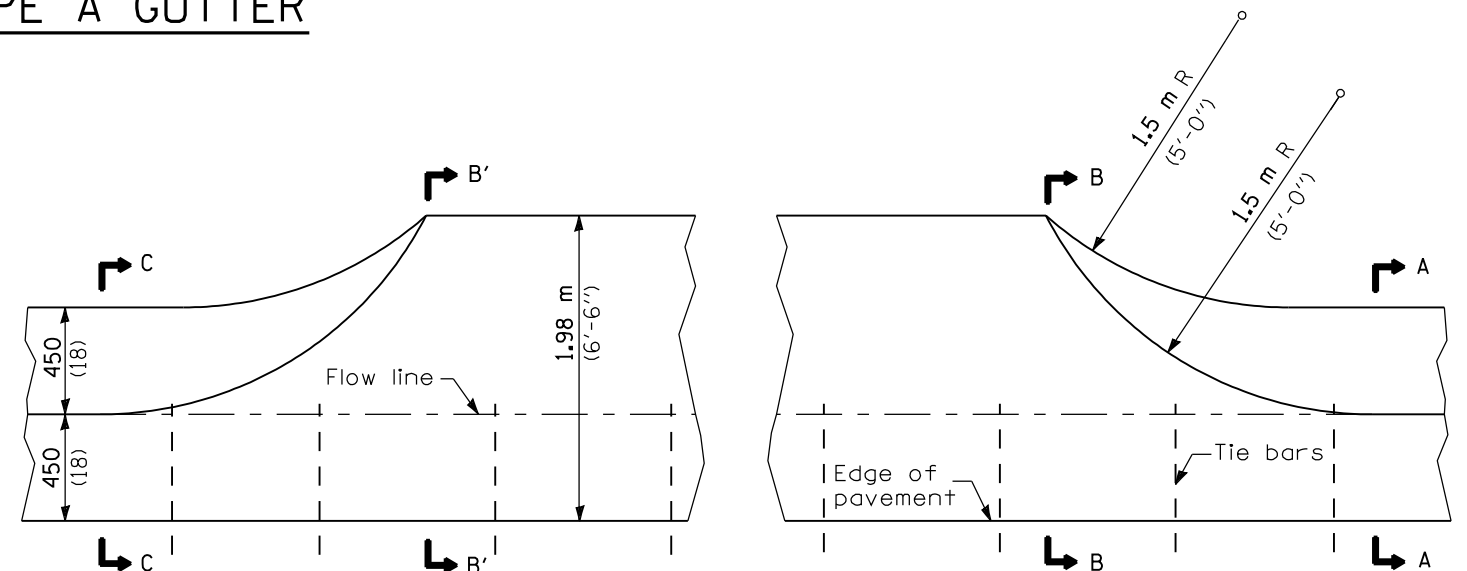


SECTION B-B

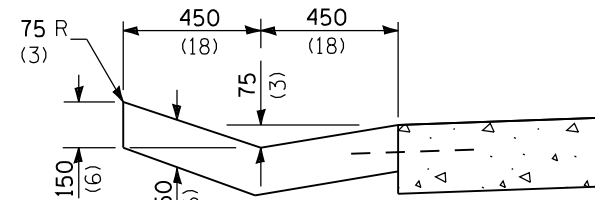


SECTION C-C

INLET

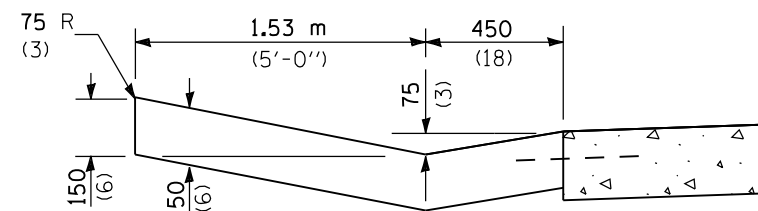


PLAN



SECTION A-A & C-C

QUANTITY
Section B'-B' to B-B = 0.3 m³/m
(0.12 cu. yd./ft.).
Section C-C to B'-B' + B-B to
A-A = 0.55 m³ (0.72 cu. yd.).



SECTION B-B & B'-B'

ENTRANCE

GENERAL NOTES

Tie bars shall be No. 19 (No. 6) at 600 mm (24") centers unless otherwise shown.

Gutter, gutter inlet, gutter outlet and gutter entrance shall be tied to the pavement in accordance with details for longitudinal construction joint shown on Standard 420001.

Two 32 mm x 450 mm (1-1/4" x 18") dowel bars shall be installed in all joints when the gutter is constructed adjacent to flexible pavement.

All dimensions are in millimeters (inches) unless otherwise shown.

Illinois Department of Transportation

PASSED January 1, 2008

ENGINEER OF POLICY AND PROCEDURES

APPROVED January 1, 2008

ENGINEER OF DESIGN AND ENVIRONMENT

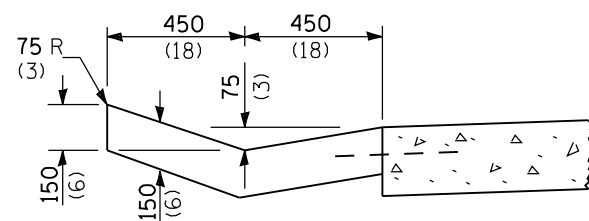
ISSUED 1-1-97

DATE	REVISIONS
1-1-08	Changed B'-B' to B-B in quantities under plan.
1-1-07	Soft converted metric reinforcement bars.

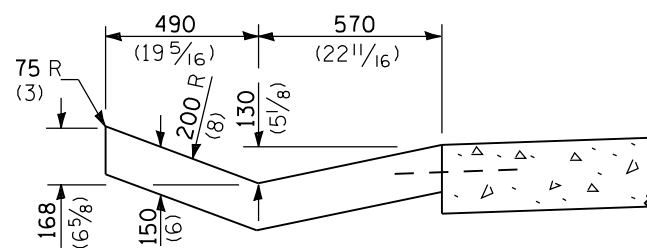
TYPE A GUTTER (INLET, OUTLET & ENTRANCE)

(Sheet 1 of 2)

STANDARD 606101-03

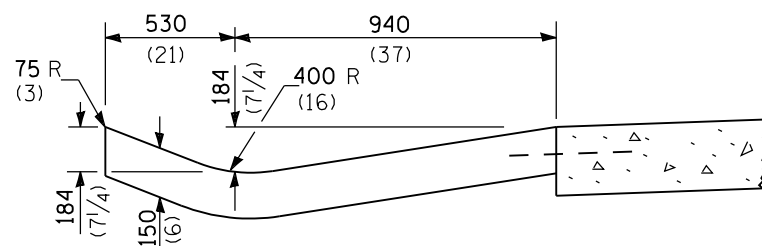


SECTION A-A

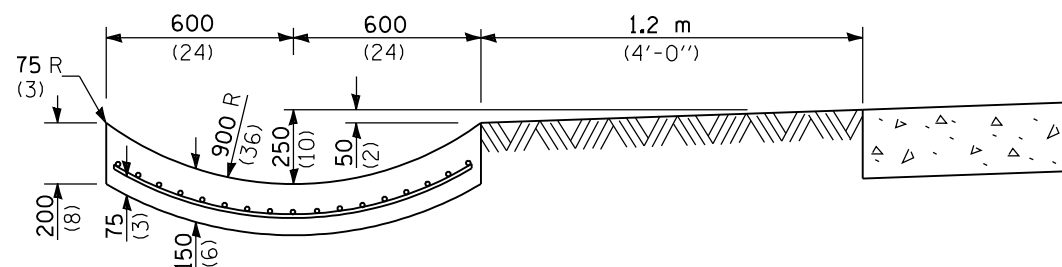


SECTION B-B

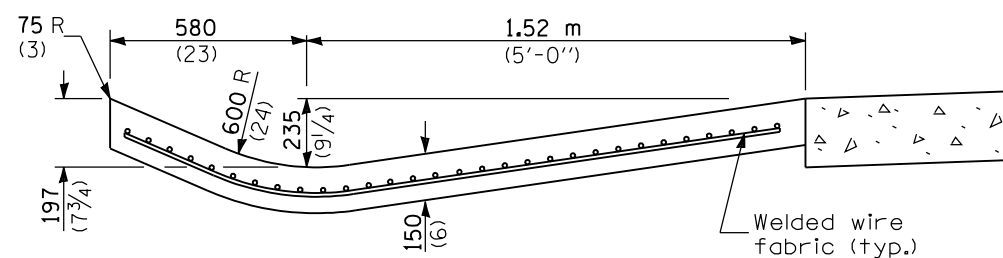
QUANTITY
 Section A-A to E-E and curtain wall
 2.70 m³ (3.53 cu. yd.) concrete.
 Section F-F = 0.2 m³/m
 (0.079 cu. yd./ft.)



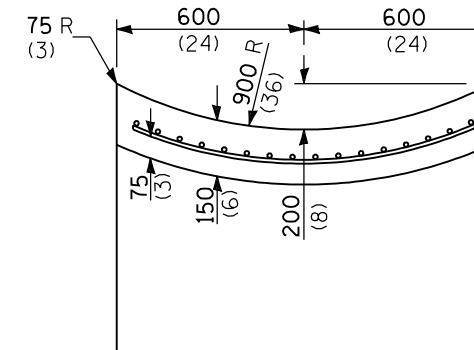
SECTION C-C



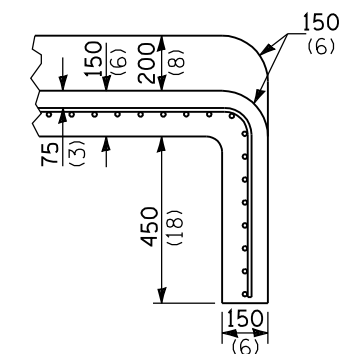
SECTION E-E



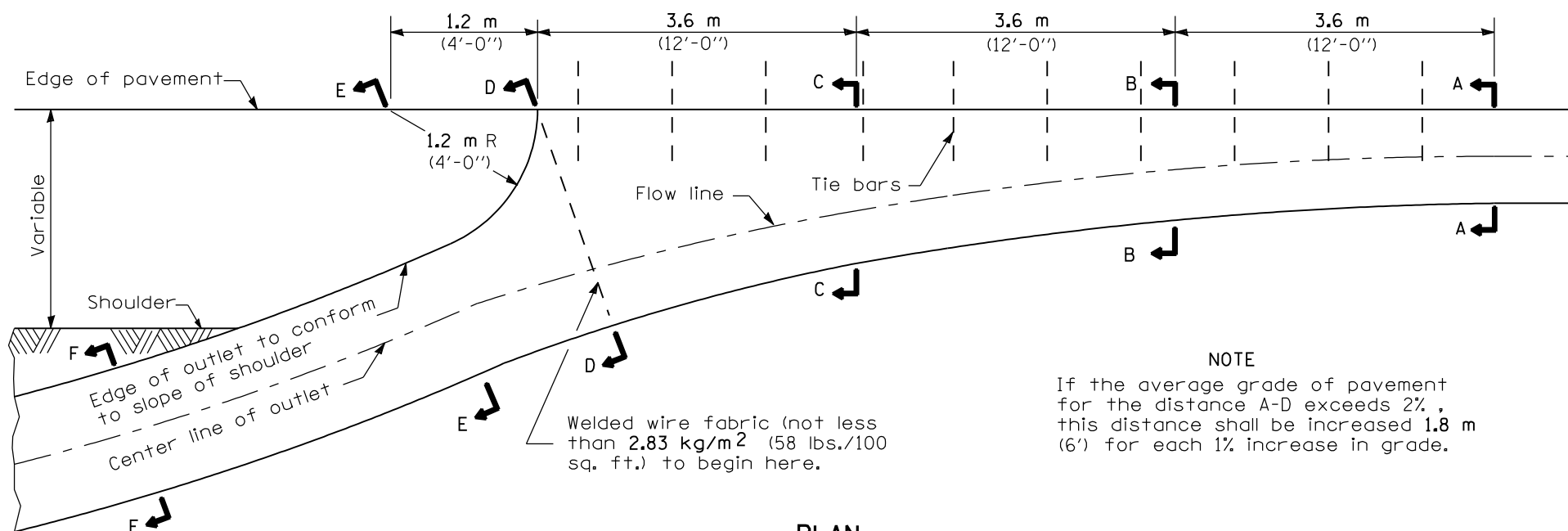
SECTION D-D



SECTION F-F



SECTIONS AT END OF OUTLET



PLAN

NOTE
 If the average grade of pavement for the distance A-D exceeds 2%, this distance shall be increased 1.8 m (6') for each 1% increase in grade.

OUTLET

All dimensions are in millimeters (inches) unless otherwise shown.

Illinois Department of Transportation
 PASSED January 1, 2008
 ENGINEER OF POLICY AND PROCEDURES
 APPROVED January 1, 2008
 ENGINEER OF DESIGN AND ENVIRONMENT

**TYPE A GUTTER
 (INLET, OUTLET & ENTRANCE)**
 (Sheet 2 of 2)
STANDARD 606101-03