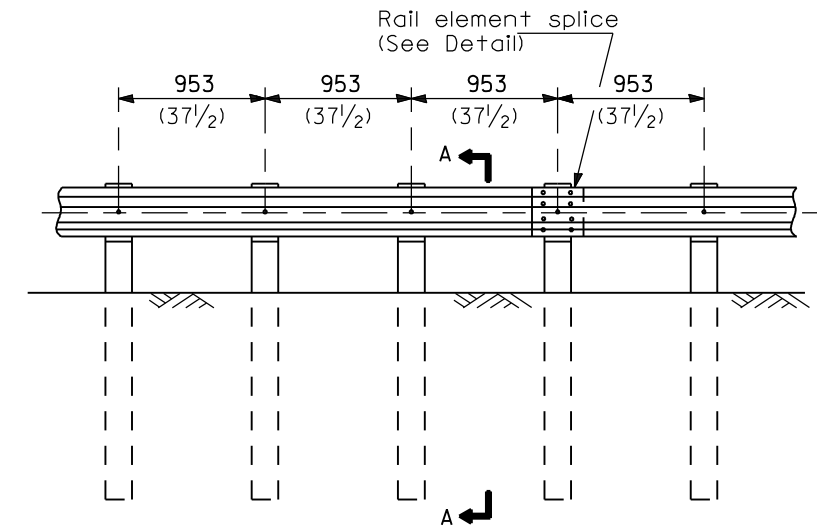


ELEVATION

TYPE A

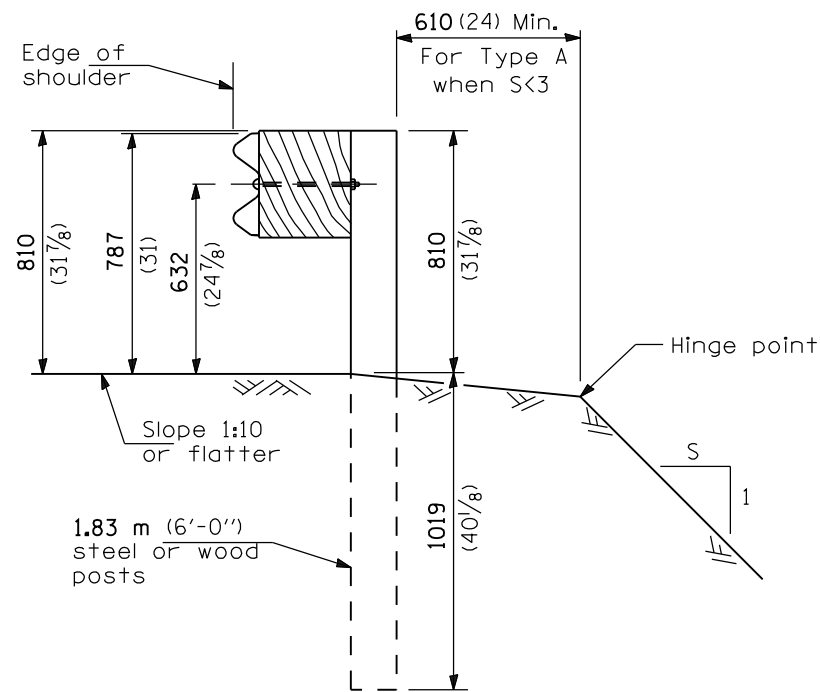
1.905 m (6'-3") Typical post spacing



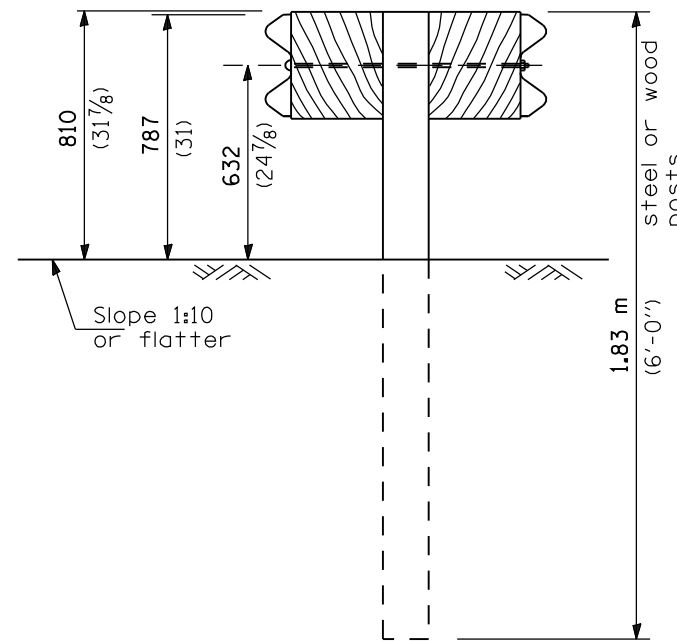
ELEVATION

TYPE B

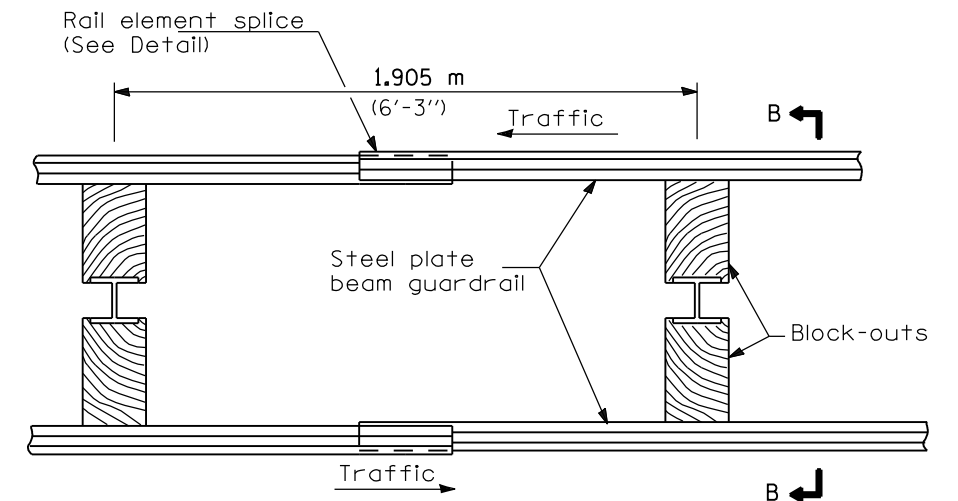
953 (37 1/2) Closed post spacing



SECTION A-A



SECTION B-B



PLAN

TYPE D

Double steel plate beam guardrail
1.905 m (6'-3") typical post spacing

GENERAL NOTES

All slope ratios are expressed as units of vertical displacement to units of horizontal displacement (V:H).

All dimensions are in millimeters (inches) unless otherwise shown.

DATE	REVISIONS
1-1-07	Changes adopted to implement the Midwest Guardrail System.
4-1-06	Deleted plate washer F.

STEEL PLATE BEAM GUARDRAIL

(Sheet 1 of 4)

STANDARD 630001-07

Illinois Department of Transportation

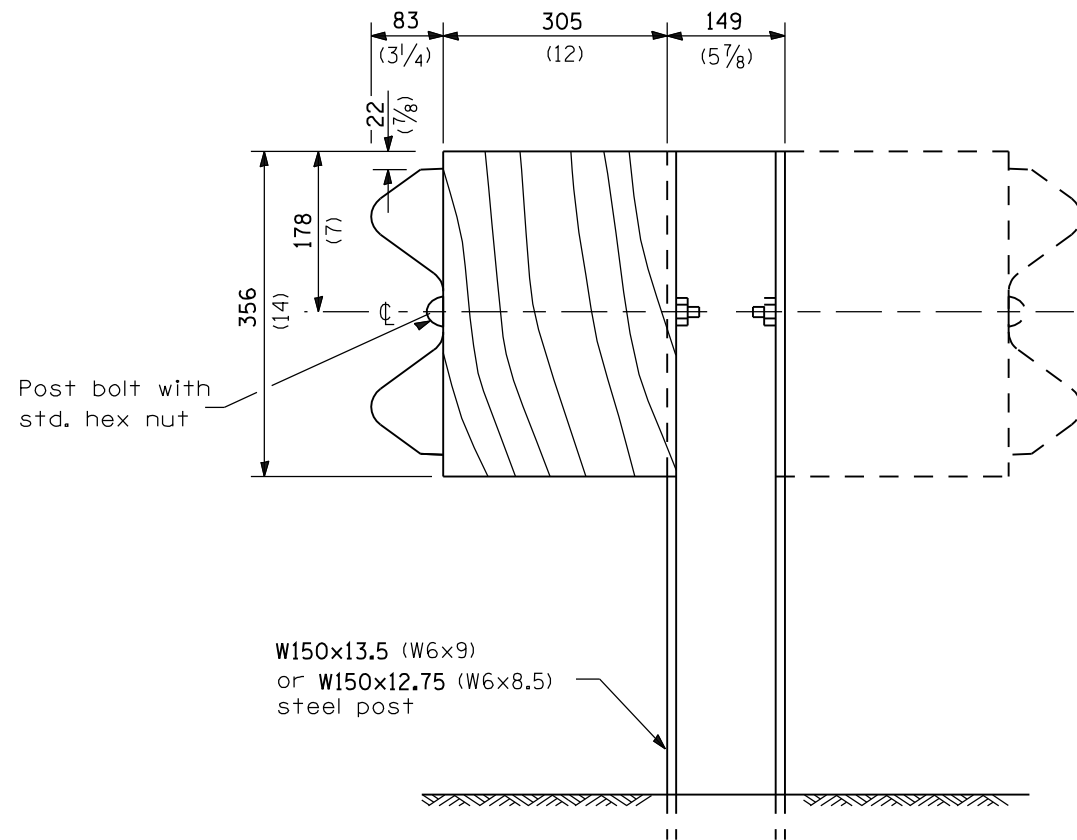
PASSED January 1, 2007

ENGINEER OF POLICY AND PROCEDURES

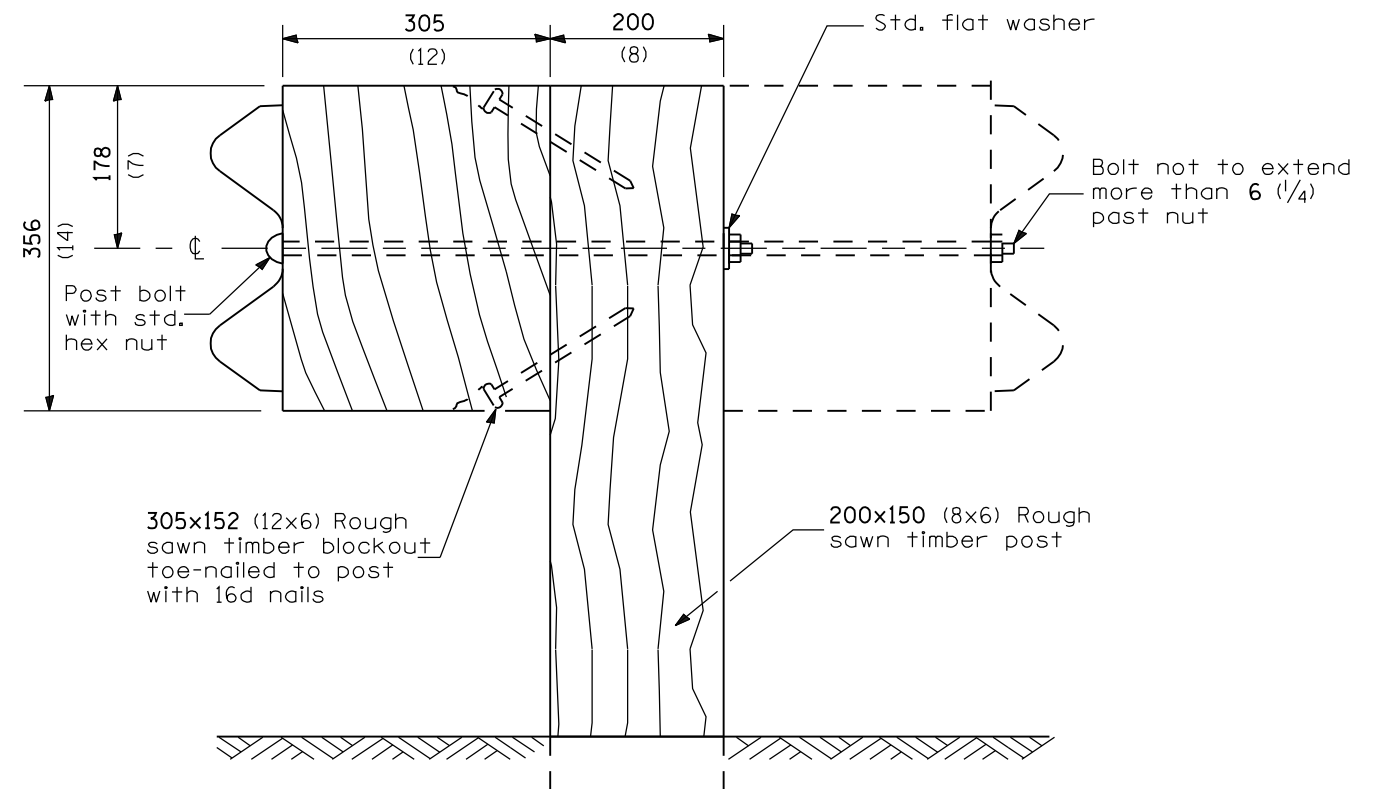
APPROVED January 1, 2007

ENGINEER OF DESIGN AND ENVIRONMENT

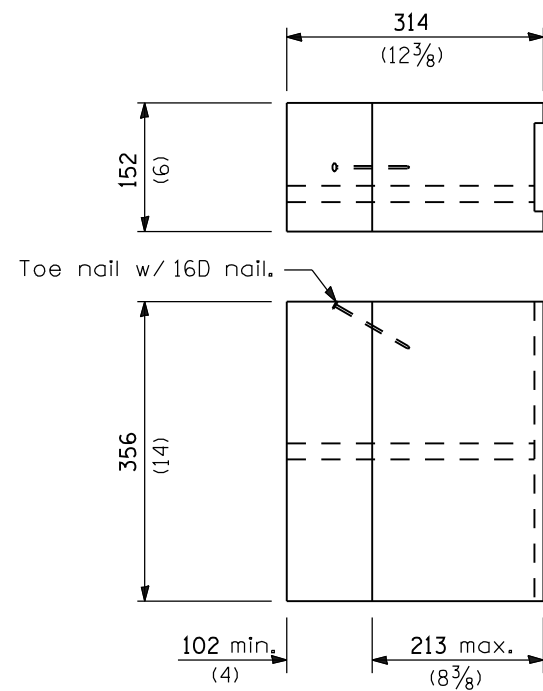
ISSUED 1-1-07



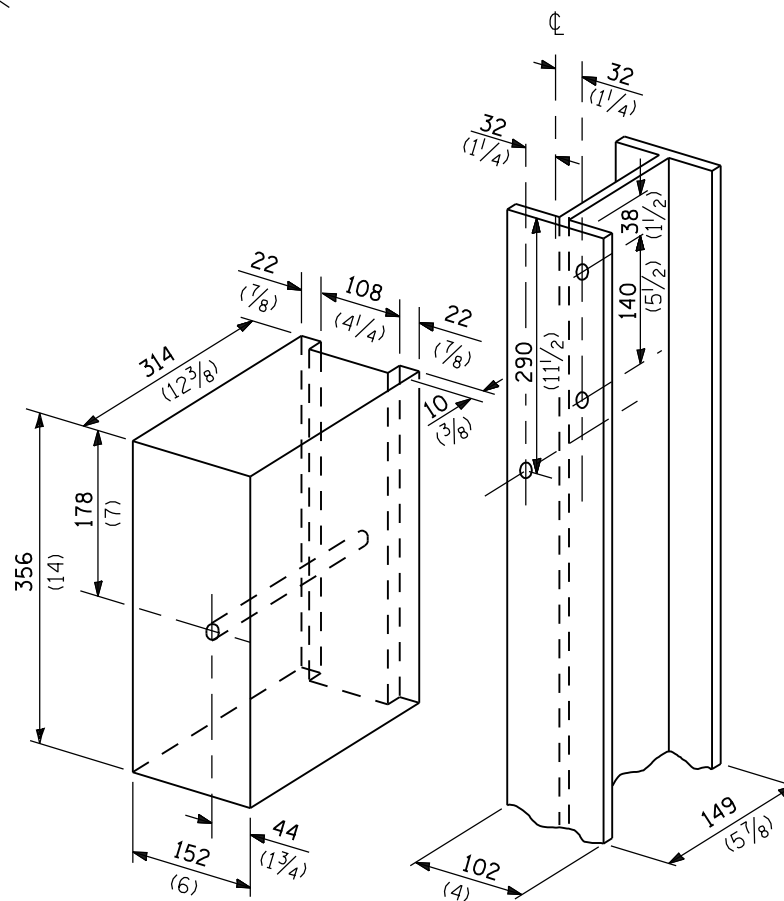
STEEL POST CONSTRUCTION



WOOD POST CONSTRUCTION

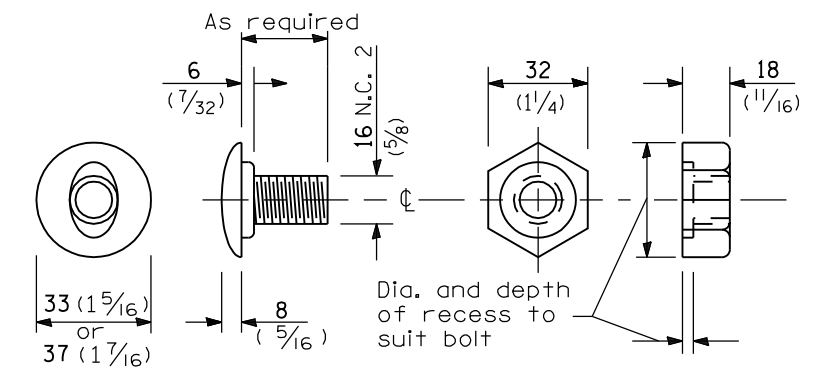


TWO-PIECE WOOD BLOCKOUT OPTION



Note:
All holes 20 (3/4) dia.

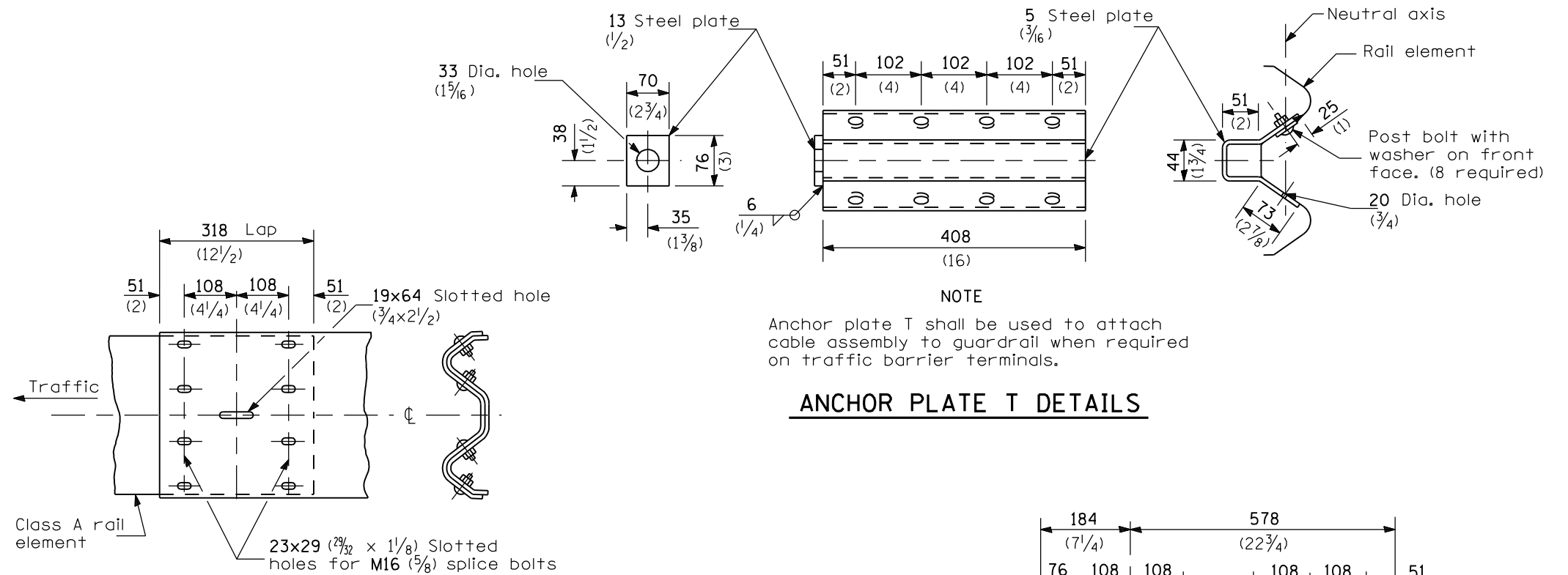
WOOD BLOCK-OUT AND STEEL POST DETAILS



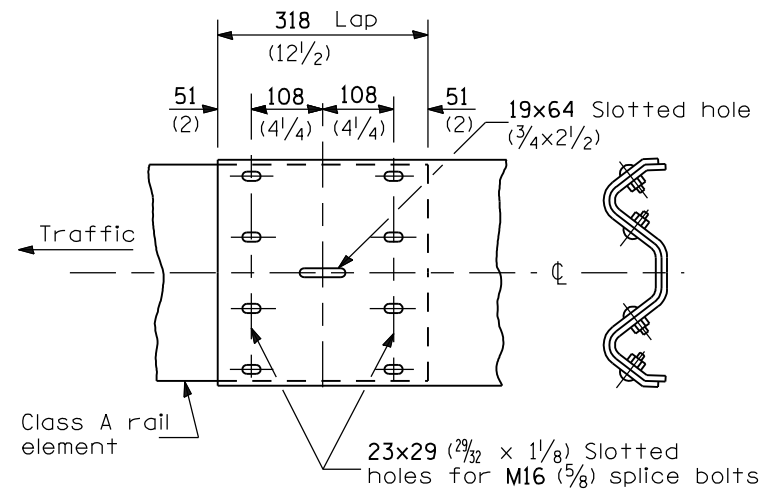
POST OR SPLICE BOLT & NUT

Illinois Department of Transportation
 PASSED January 1, 2007
 ENGINEER OF POLICY AND PROCEDURES
 APPROVED January 1, 2007
 ENGINEER OF DESIGN AND ENVIRONMENT

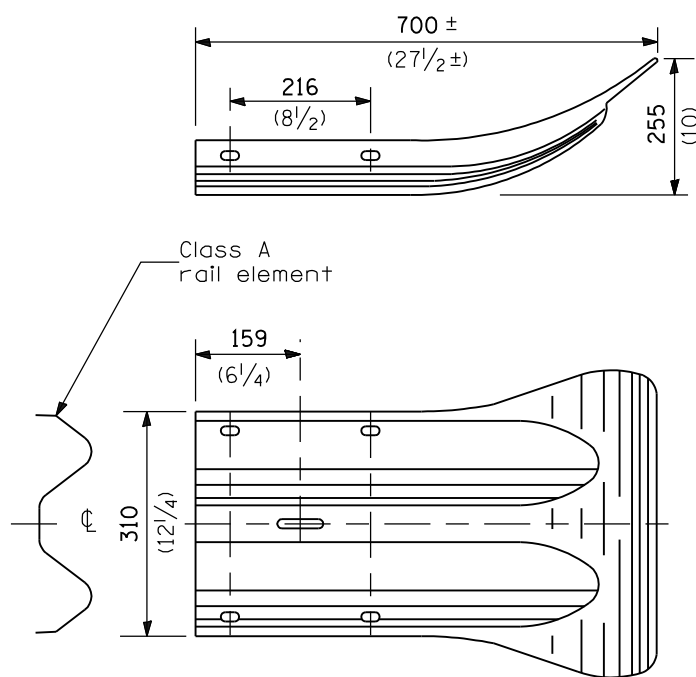
STEEL PLATE BEAM GUARDRAIL
 (Sheet 2 of 4)
STANDARD 630001-07



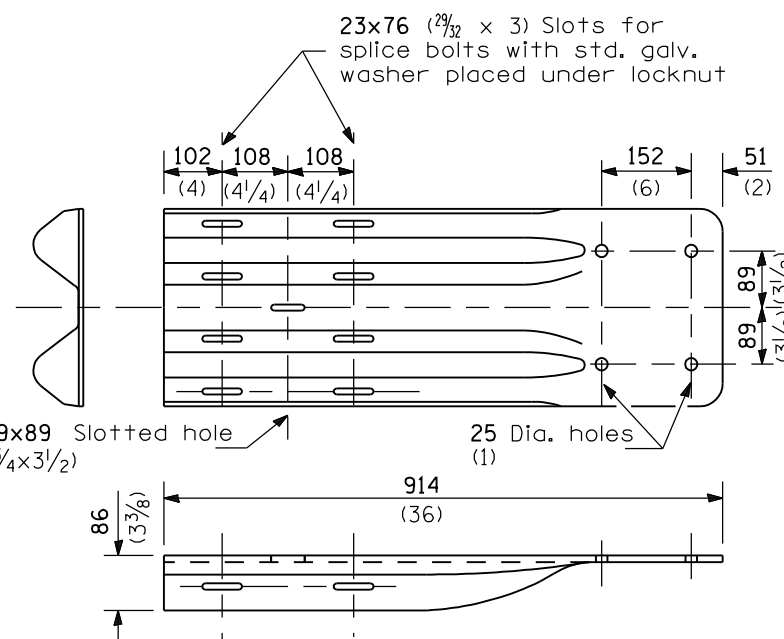
ANCHOR PLATE T DETAILS



RAIL ELEMENT SPLICE



END SECTION



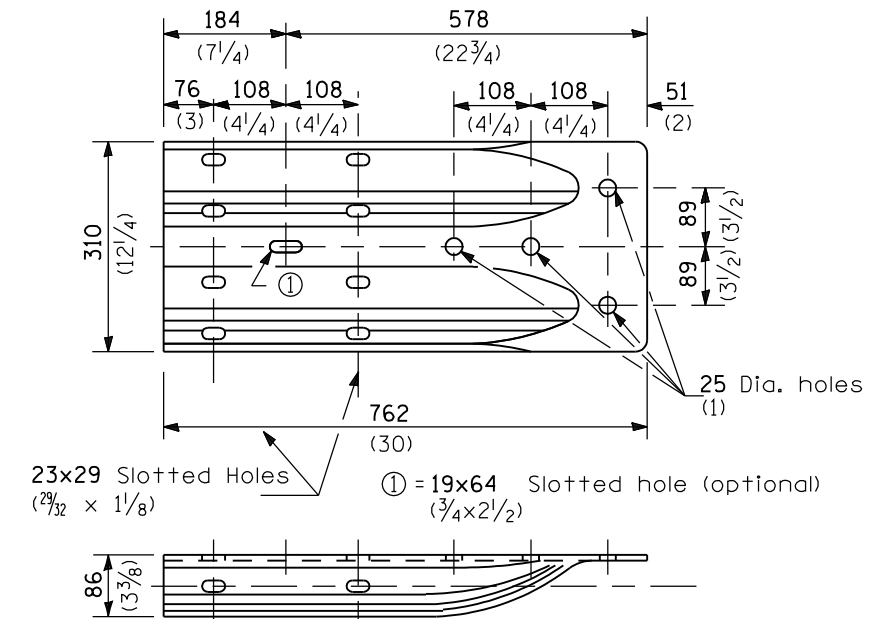
NOTE

When end shoe is attached to a bridge parapet which has an expansion joint, the bolts shall be provided with a locknut or double nut and shall be tightened only to a point that will allow guardrail movement.

The standard end shoe shall be attached to the concrete with pre-drilled or self-drilling anchor bolts. The anchor cone shall be set flush with the surface of the concrete.

Externally threaded studs protruding from the surface of the concrete will not be permitted.

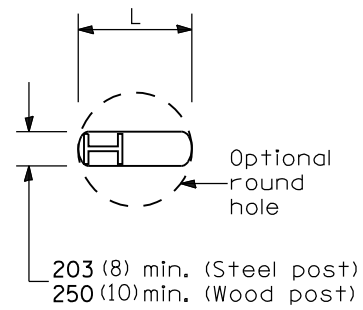
END SHOE



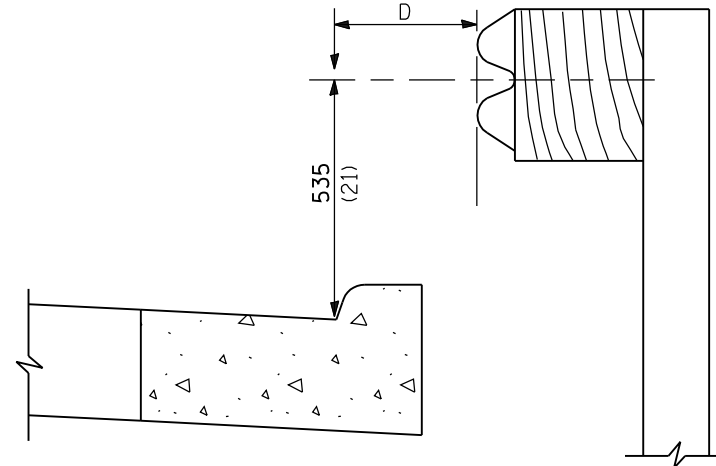
ALTERNATE END SHOE

Illinois Department of Transportation
PASSED January 1, 2007
ENGINEER OF POLICY AND PROCEDURES
APPROVED January 1, 2007
ENGINEER OF DESIGN AND ENVIRONMENT
ISSUED 1-1-97

STEEL PLATE BEAM GUARDRAIL
(Sheet 3 of 4)
STANDARD 630001-07



PLAN

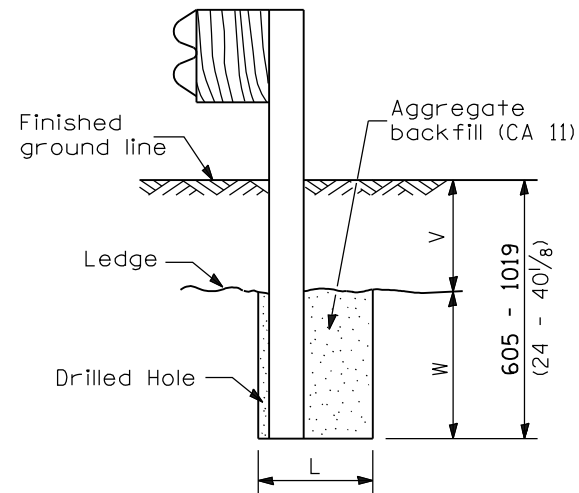


Note:

If it is necessary for D to be more than 300 (12) and less than 3.0 m (10'-0") type M-5 (M-2) curb and gutter (Std. 606001) shall be used in front of and in advance of the guardrail.

GUARDRAIL PLACED BEHIND CURB

(D = 0 minimum to 300 (12) maximum and desirable)

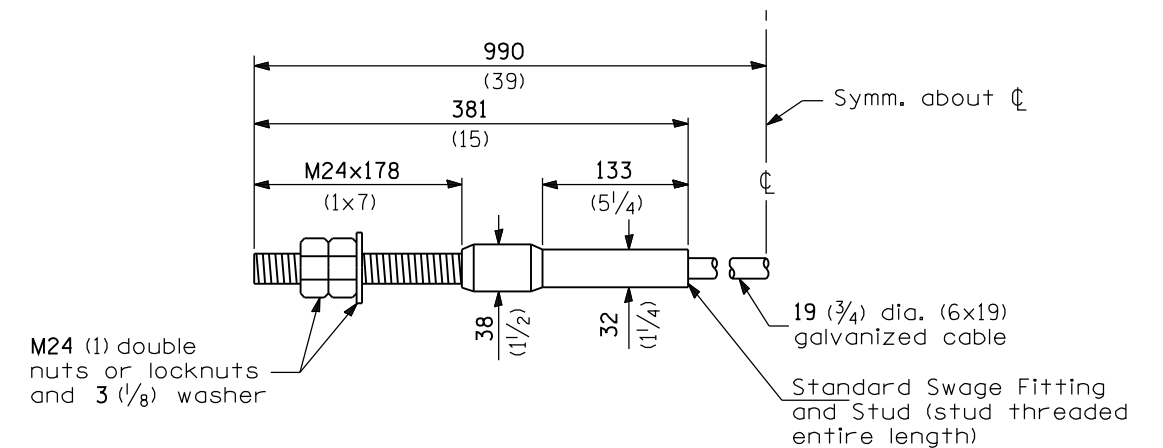


Note:
Ledge line is top of rock ledge or hard slag fill.

ELEVATION

FOOTING FOR POST WHEN IMPERVIOUS MATERIAL IS ENCOUNTERED

V	W	L	
		Steel Post	Wood Post
0 - 410 (0 - 16 1/8)	610 (24)	530 (21)	580 (23)
>410 - 714 (>16 1/8 - 28 1/8)	305 (12)	203 (8)	250 (10)
>714 - 1019 (>28 1/8 - 40 7/8)	305 - 0 (12 - 0)	203 (8)	250 (10)



CABLE ASSEMBLY

(18,100 kg (40,000 lbs.) min. breaking strength)
Tighten to taut tension.

Illinois Department of Transportation

PASSED January 1, 2007
ENGINEER OF POLICY AND PROCEDURES

APPROVED January 1, 2007
ENGINEER OF DESIGN AND ENVIRONMENT

ISSUED 1-1-97

STEEL PLATE BEAM GUARDRAIL

(Sheet 4 of 4)

STANDARD 630001-07