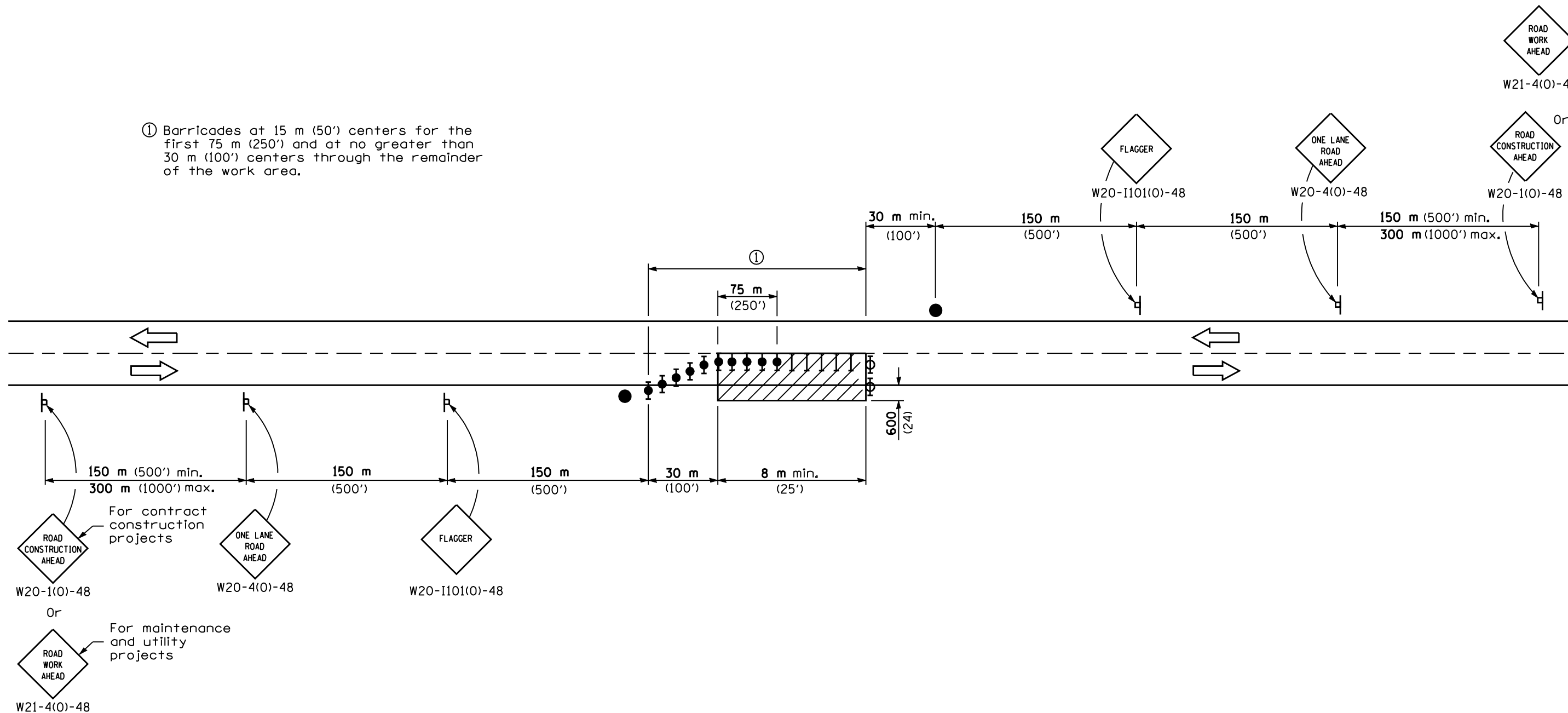


① Barricades at 15 m (50') centers for the first 75 m (250') and at no greater than 30 m (100') centers through the remainder of the work area.



TYPICAL APPLICATIONS

Isolated patch
Installation of drainage structure
Utility operations

SYMBOLS

- Work area
- Sign
- Flagger with traffic control sign
- Barricade or drum
- Barricade or drum with flashing light
- Barricade or drum with steady burning light

GENERAL NOTES

This Standard is used where at any time, any vehicle, equipment, workers or their activities will encroach in the area between the center line and a line 600 mm (24") from the edge of pavement for nighttime operation.

All dimensions are in millimeters (inches) unless otherwise shown.

DATE	REVISIONS	
1-1-05	Revised title and notes.	LANE CLOSURE, 2L, 2W, NIGHT ONLY, FOR SPEEDS \geq 45 MPH
1-1-97	Renum. Standard 2304-10. Deleted orange flags. Revised 2nd GN.	
		STANDARD 701206-01

Illinois Department of Transportation

APPROVED January 1, 2005
ENGINEER OF OPERATIONS

APPROVED January 1, 2005
ENGINEER OF DESIGN AND ENVIRONMENT

ISSUED 1-1-97