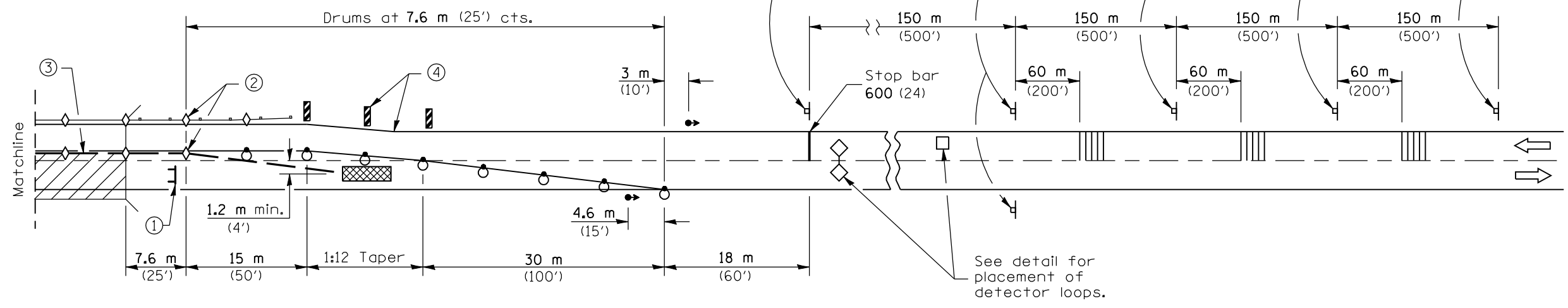
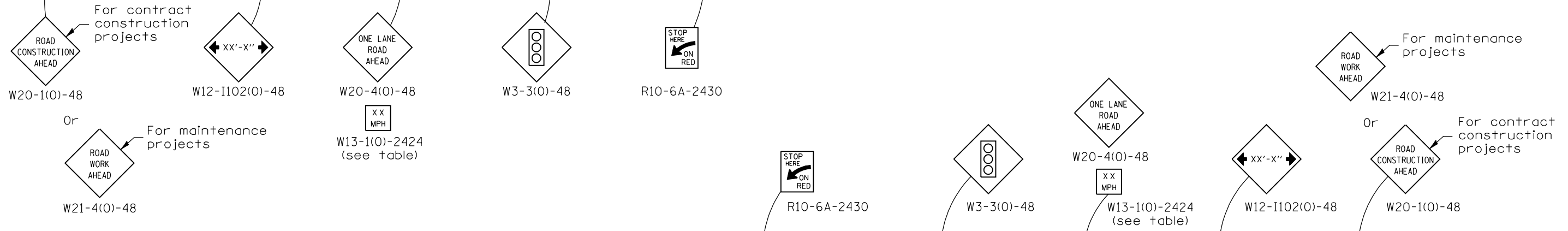
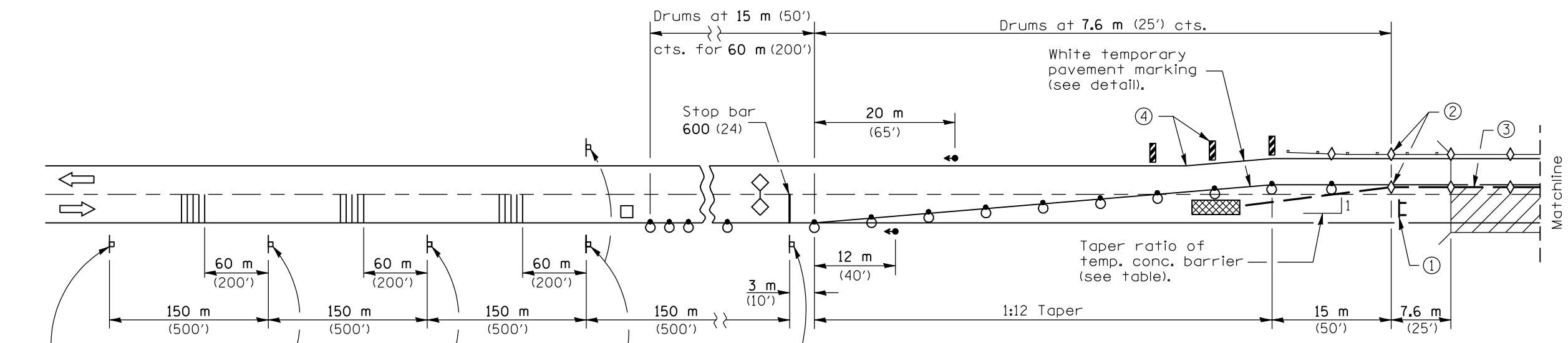


- ① Type III barricade to be placed when no work is being performed.
- ② Barrier wall/guardrail markers at 7.6 m (25') cts. See Standards 704001 & 635011.
- ③ When temp. bridge rail is specified, it shall be connected to the temp. conc. barrier using a traffic barrier terminal Type 11.
- ④ These vertical panels at 7.6 m (25') cts. may be omitted when the guardrail, w/markers, extends to at least this point on the taper.



SYMBOLS

- ▨ Work area
- Drum with steady burning light
- p Sign
- Temporary concrete barrier
- ⌌ Type III barricade
- ▤▤▤▤ Temporary rumble strip (when specified)
- Traffic signal
- ▨▨▨▨ Double vertical panel (see detail)
- Detector loops
- ◇ Crystal, bidirectional barrier wall/guardrail marker
- ▨▨▨▨ Impact attenuator

See Sheet 2 for GENERAL NOTES

Illinois Department of Transportation

APPROVED January 1, 2008
ENGINEER OF OPERATIONS

APPROVED January 1, 2008
ENGINEER OF DESIGN AND ENVIRONMENT

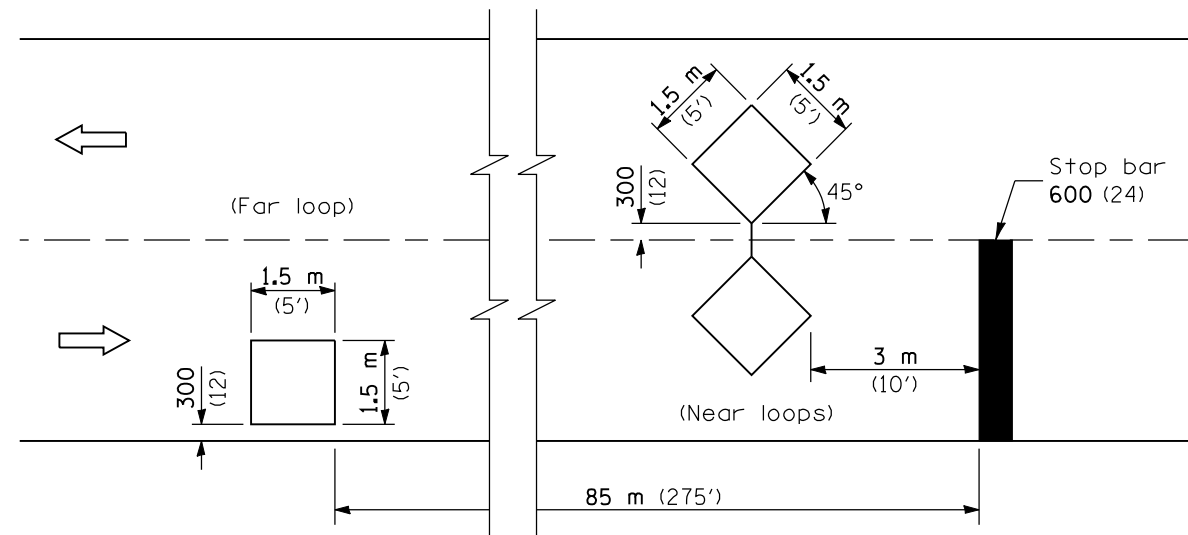
ISSUED 1-1-97

DATE	REVISIONS
1-1-08	Completely revised Standard.
1-1-05	Revised notes, deleted pavement markers and advisory speed sign.

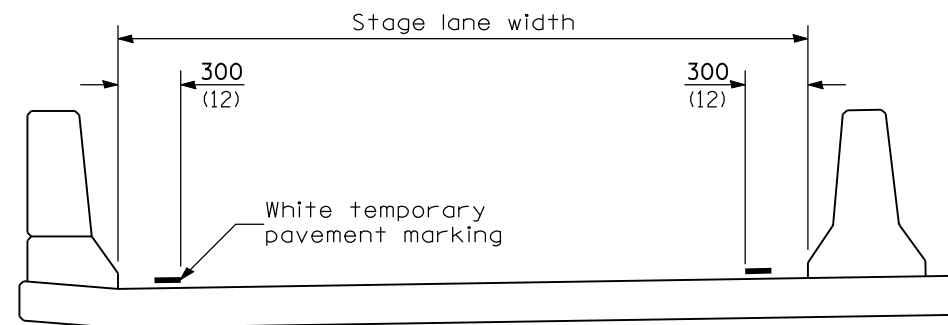
**LANE CLOSURE, 2L, 2W,
BRIDGE REPAIR WITH BARRIER**

(Sheet 1 of 2)

STANDARD 701321-09



DETECTOR LOOPS

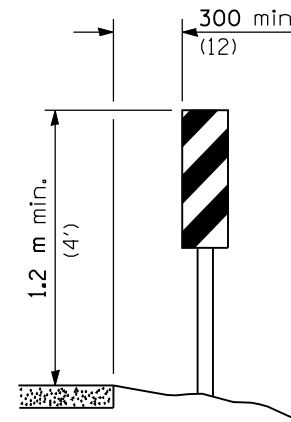


TEMPORARY PAVEMENT MARKING

TRAFFIC SIGNAL SEQUENCE						
PHASE	A			B		
INTERVAL	1	2	3	4	5	6
NORTHBOUND OR EASTBOUND	G	Y	R	R	R	R
SOUTHBOUND OR WESTBOUND	R	R	R	G	Y	R

TEMPORARY CONCRETE BARRIER	
NORMAL POSTED SPEED	TAPER RATIO
40 mph AND ABOVE	12:1
BELOW 40 mph	8:1

ADVISORY SPEED LIMIT	
NORMAL POSTED SPEED	ADVISORY SPEED
55 - 45 mph	40 mph
40 mph	35 mph
35 - 30 mph	30 mph



VERTICAL PANELS

(Post mounted, one each side)

GENERAL NOTES

This Standard is used where, at any time, any vehicle, equipment, workers, or their activities will encroach on one lane of a bridge. Traffic signals and a positive barrier are required.

Traffic signals shall be operational only when all traffic controls are in place. When traffic signals are not in operation, flaggers shall be used and traffic control shall conform to Standard 701201 or 701206.

Temporary concrete barrier shall be according to Standard 704001.

All dimensions are in millimeters (inches) unless otherwise shown.

**LANE CLOSURE, 2L, 2W,
BRIDGE REPAIR WITH BARRIER**

(Sheet 2 of 2)

STANDARD 701321-09

Illinois Department of Transportation

APPROVED January 1, 2008

ENGINEER OF OPERATIONS

APPROVED January 1, 2008

ENGINEER OF DESIGN AND ENVIRONMENT

ISSUED 1-1-97