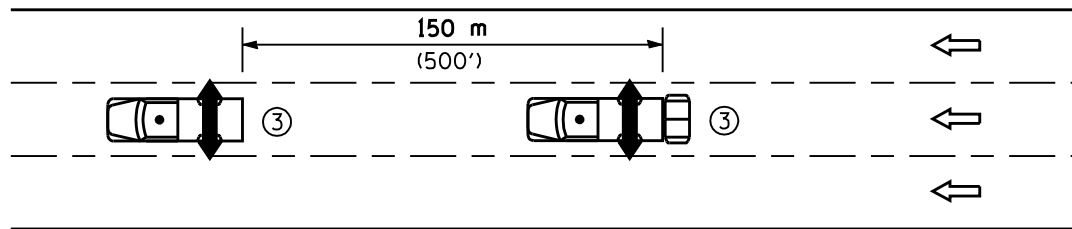


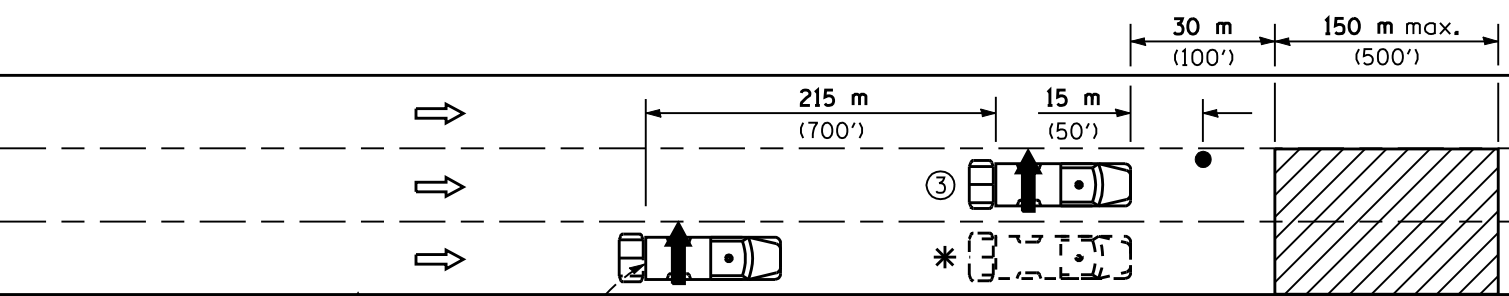
**NOTE**  
When a shoulder does not exist or is narrow, use Detail C.

**DETAIL A**



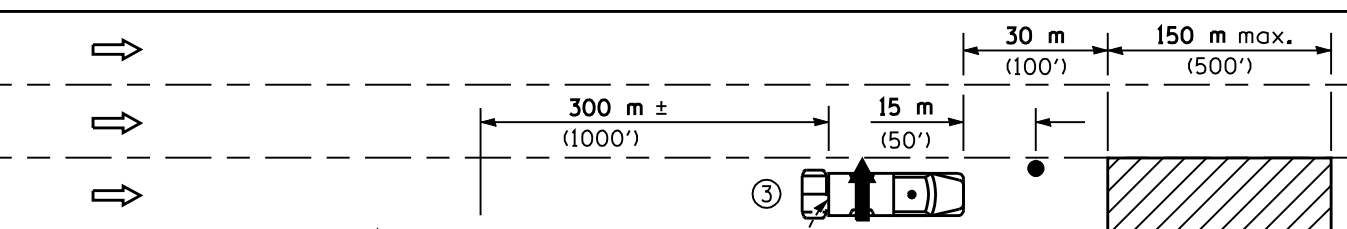
**DETAIL B**  
(1) Pavement marking operations of an interior lane only

**WET PAINT**  
G20-1101-2430  
(appropriate arrow)  
(3) (when striping only)

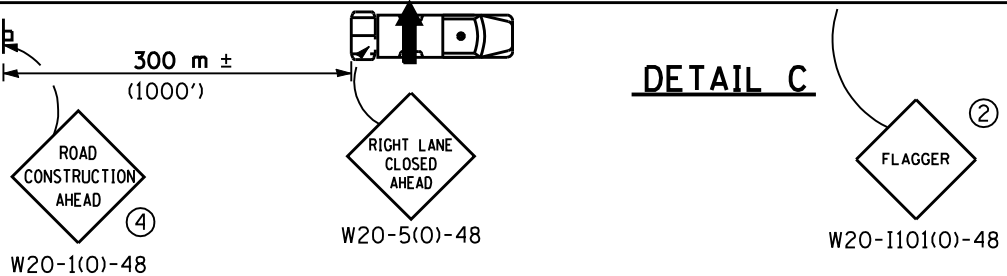


**DETAIL D**

\* Required when workers are on the pavement.



**DETAIL C**



**SYMBOLS**

- Arrow board
- Work area
- Truck with flashing amber light
- Truck mounted attenuator
- Flagger with traffic control sign

**TYPICAL APPLICATIONS**

- Landscaping work
- Utility work
- Pavement marking
- Weed spraying
- Roadometer measurements
- Debris cleanup
- Crack pouring

**GENERAL NOTES**

This Standard is used where any vehicle, equipment, workers or their activities will require: 1) stationary operations up to 1 hour, or 2) a continuous or intermittent moving operation where the average speed of movement is greater than 2 km/h (1 mph).

This Standard is also applicable when work is being performed in the left lane(s) or on the median shoulder. Under these conditions, KEEP RIGHT signs shall be substituted for KEEP LEFT signs and arrow board indications shall be directed to the right.

- (1) DETAIL B shall be used only for pavement marking operations where workers are not present on the pavement. For other operations involving an interior lane, use DETAIL D.
- (2) Flaggers are required when workers are on the pavement.
- (3) For striping operations only. See sign arrow detail on this standard.
- (4) For operations which are on the roadway or shoulder, greater than 15 minutes and up to 1 hour.

All dimensions are in millimeters (inches) unless otherwise shown.

DATE	REVISIONS
1-1-05	Revised Detail A and deleted FLAGGER SYMBOL sign.
1-1-00	Rev. SHOULDER WORK AHEAD sign. Added prov. for temp. stationary oper.

**LANE CLOSURE, MULTILANE, INTERMITTENT OR MOVING OPER., FOR SPEEDS ≥ 45 MPH**

**STANDARD 701426-02**

Illinois Department of Transportation

APPROVED January 1, 2005  
*[Signature]*  
ENGINEER OF OPERATIONS

APPROVED January 1, 2005  
*[Signature]*  
ENGINEER OF DESIGN AND ENVIRONMENT

ISSUED 1-1-97