

CASE I
(Signs required for both directions)

SIGN SPACING	
Posted Speed	Sign Spacing
55 (4)	150 m (500')
50-45 (4)	115 m (350')
<45	60 m (200')

SYMBOLS

- Arrow board
- Work area
- Barricade or drum with steady burning monidirectional light
- Barricade or drum without flashing light
- Flagger with traffic control sign
- Cone, drum or barricade (Cones for daytime use only)
- Sign on portable or permanent support

- ① Refer to SIGN SPACING TABLE for distances.
- ② Required for speeds > 70 km/h (40 mph).
- ③ Required if work exceeds 164 m (500') or 1 block.
- ④ For speeds exceeding 80 km/h (45 mph) contact the District Operations Office for approval of sign spacing.
- ⑤ Cones at 8 m (25') centers for 75 m (250'). Additional cones may be placed at 15 m (50') centers. When drums or type I or II barricades are used, the interval between devices may be doubled.
- ⑥ For approved sideroad closures.
- ⑦ Cones, drums or barricades at 6 m (20') centers in taper.

GENERAL NOTES

This Standard is used to close one lane of an urban, two lane, two way roadway with a bidirectional turn lane.

Case I applies when no workers are present. When workers are present, two lanes shall be closed and traffic control shall be according to Standard 701501.

Calculate L as follows:

SPEED LIMIT	FORMULAS	
70 km/h (40 mph) or less:	Metric $L = \frac{WS^2}{150}$	(English) $L = \frac{WS^2}{60}$

80 km/h (45 mph) or greater:	$L = 0.65(W)(S)$	$L = (W)(S)$
------------------------------	------------------	--------------

W = Width of offset in meters (feet).

S = Normal posted speed km/h (mph).

All dimensions are in millimeters (inches) unless otherwise shown.

DATE	REVISIONS
1-1-08	Added note ⑦
1-1-05	Revised notes and deleted FLAGGER SYMBOL sign.

**URBAN LANE CLOSURE,
2L, 2W, WITH BIDIRECTIONAL
LEFT TURN LANE**
(Sheet 1 of 2)

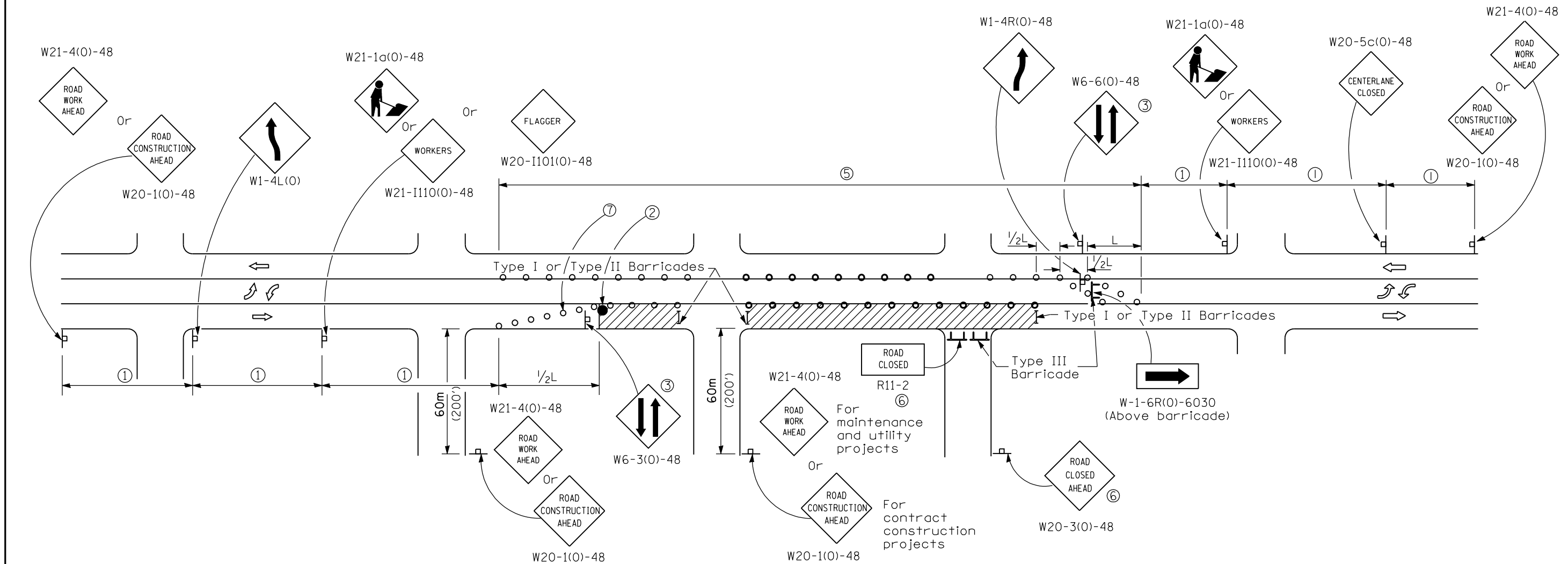
STANDARD 701502-02

Illinois Department of Transportation

APPROVED January 1, 2008
ENGINEER OF OPERATIONS

APPROVED January 1, 2008
ENGINEER OF DESIGN AND ENVIRONMENT

ISSUED 1-1-01



CASE II

Illinois Department of Transportation

APPROVED January 1, 2008
 ENGINEER OF OPERATIONS
 APPROVED January 1, 2008
 ENGINEER OF DESIGN AND ENVIRONMENT

ISSUED 1-1-10

**URBAN LANE CLOSURE,
 2L, 2W, WITH BIDIRECTIONAL
 LEFT TURN LANE**
 (Sheet 2 of 2)

STANDARD 701502-02