

CASE I

SIGN SPACING	
Posted Speed	Sign Spacing
55 (4)	150 m (500')
50-45 (4)	115 m (350')
<45	60 m (200')

SYMBOLS

- ↑ Arrow board
- ▨ Work area
- ⊕ Barricade or drum with steady burning monidirectional light
- I Barricade or drum without flashing light
- Flagger with traffic control sign
- Cone, drum or barricade (Cones for daytime use only)
- ⊥ Sign on portable or permanent support
- ⊥ Type III Barricade

- ① Refer to SIGN SPACING TABLE for distances.
- ② Required for speeds > 70 km/h (40 mph).
- ③ Required if work exceeds 164 m (500') or 1 block, repeat every 1.6 km (1 mile).
- ④ For speeds exceeding 80 km/h (45 mph) contact the District Operations Office for approval of sign spacing.
- ⑤ Cones at 8 m (25') centers for 75 m (250'). Additional cones may be placed at 15 m (50') centers. When drums or type I or II barricades are used, the interval between devices may be doubled.
- ⑥ For approved sideroad closures.
- ⑦ Cones, drums or barricades at 6 m (20') centers in taper.

GENERAL NOTES

This Standard is used where at anytime, day or night, any vehicle, equipment, workers or their activities encroach on the pavement requiring the closure of one traffic lane in an Urban area.

If the work operation is performed between 9:00 a.m. and 3:00 p.m. and does not exceed 15 min. Traffic protection shall be as shown for Standard 701426.

Calculate L as follows:

SPEED LIMIT	FORMULAS	
70 km/h (40 mph) or less:	Metric $L = \frac{WS^2}{150}$	(English) $L = \frac{WS^2}{60}$
80 km/h (45 mph) or greater:	$L = 0.65(W)(S)$	$L = (W)(S)$

W = Width of offset in meters (feet).
S = Normal posted speed km/h (mph).

All dimensions are in millimeters (inches) unless otherwise shown.

DATE	REVISIONS
1-1-08	Revised note ③, added note ⑦, added signs.
1-1-05	Revised notes and deleted FLAGGER SYMBOL sign.

URBAN LANE CLOSURE, MULTILANE, 2W WITH BIDIRECTIONAL LEFT TURN LANE

(Sheet 1 of 4)

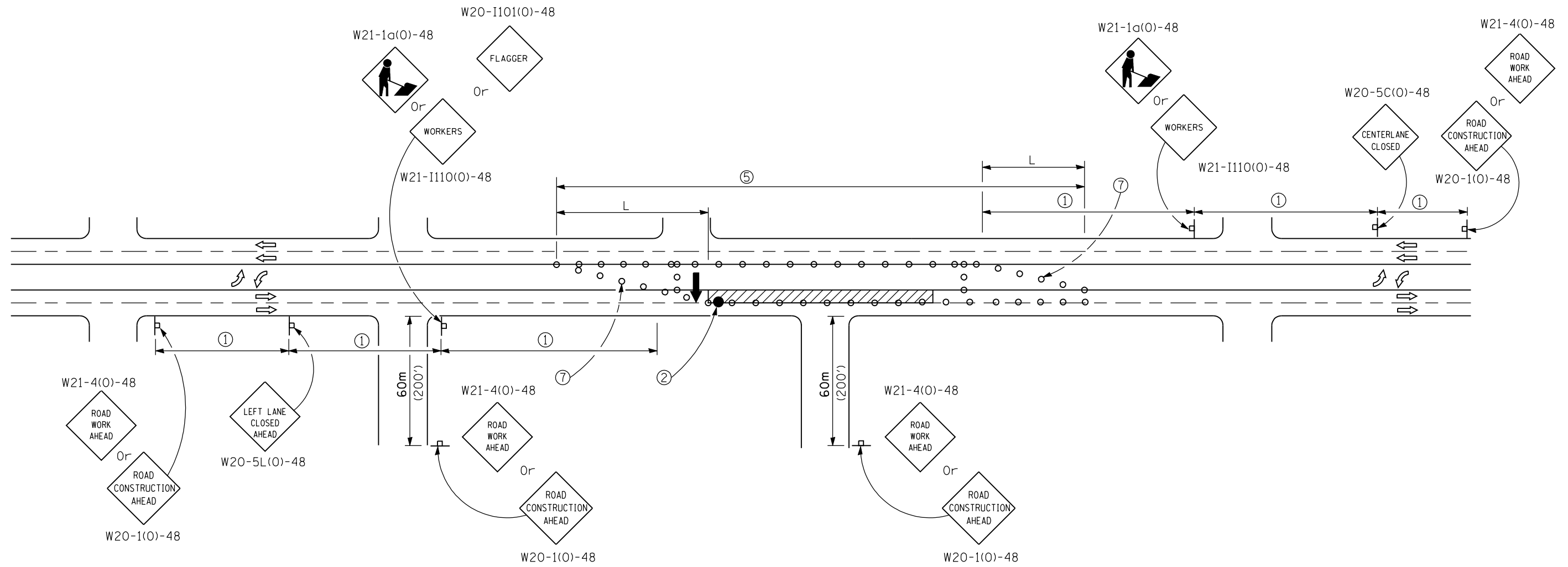
STANDARD 701602-03

Illinois Department of Transportation

APPROVED January 1, 2008
ENGINEER OF OPERATIONS

APPROVED January 1, 2008
ENGINEER OF DESIGN AND ENVIRONMENT

ISSUED 10-1-01

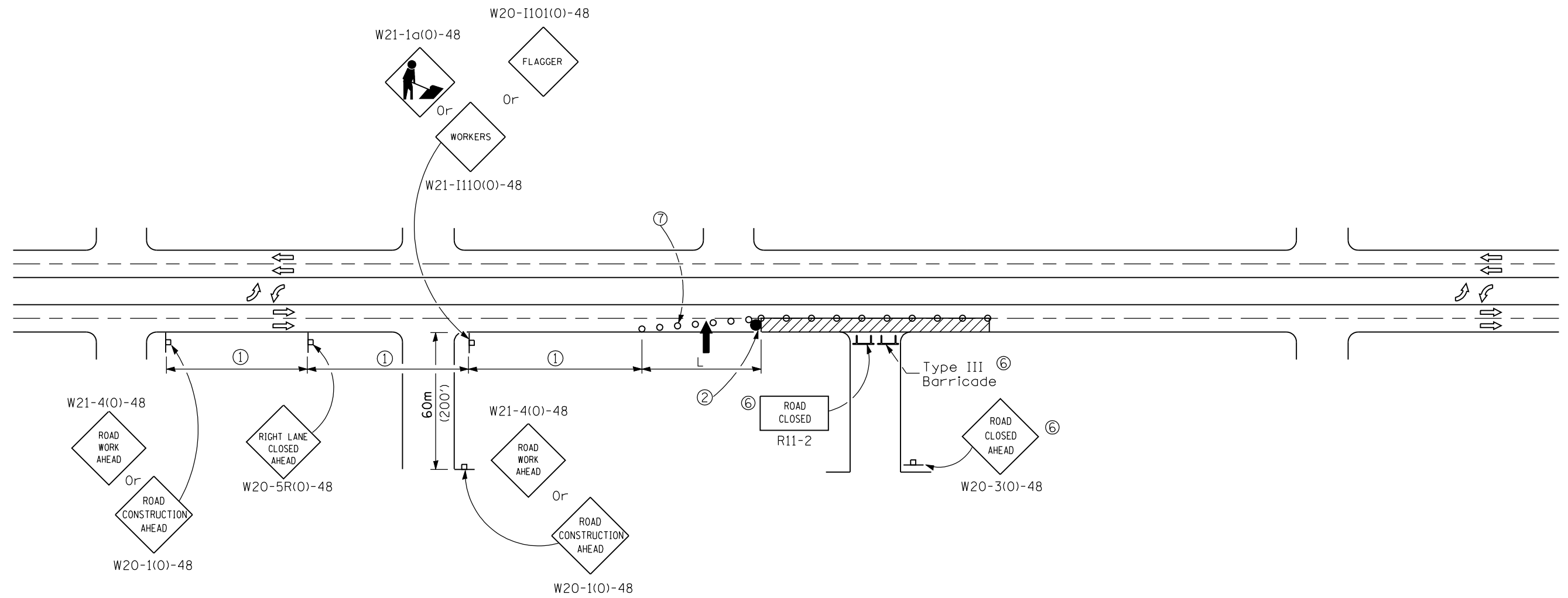


CASE III

Illinois Department of Transportation
 APPROVED January 1, 2008
 ENGINEER OF OPERATIONS
 APPROVED January 1, 2008
 ENGINEER OF DESIGN AND ENVIRONMENT

ISSUED 1-1-01

URBAN LANE CLOSURE, MULTILANE,
 2W WITH BIDIRECTIONAL
 LEFT TURN LANE
 (Sheet 3 of 4)
STANDARD 701602-03



CASE IV

Illinois Department of Transportation

APPROVED January 1, 2008
 ENGINEER OF OPERATIONS
 APPROVED January 1, 2008
 ENGINEER OF DESIGN AND ENVIRONMENT

ISSUED 1-1-01

URBAN LANE CLOSURE, MULTILANE,
 2W WITH BIDIRECTIONAL
 LEFT TURN LANE
 (Sheet 4 of 4)

STANDARD 701602-03