

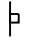


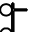



SIGN SPACING	
Posted Speed	Sign Spacing
55	164 m (500')
50-45	115 m (350')
<45	60 m (200')

SYMBOLS

-  Arrow board
-  Cone, drum or barricade
-  Sign on portable or permanent support
-  Work area
-  Barricade or drum with flashing light
-  Type III barricade with flashing lights
-  Flagger with traffic control sign.

- ① Refer to SIGN SPACING TABLE for distances.
- ② Required for speeds > 40 MPH
- ③ Use flagger sign only when flagger is present.
- ④ For approved sideroad closures.
- ⑤ Cones at 8 m (25') centers for 75 m (250'). Additional cones may be placed at 15 m (50') centers. When drums or Type I or Type II barricades are used, the interval between devices may be doubled.
- ⑥ Cones, drums or barricades at 6 m (20') centers in taper.
- ⑦ Repeat every 1.6 km (1 mile).

GENERAL NOTES

This Standard is used where at anytime, day or night, any vehicle, equipment, workers or their activities encroach on the pavement requiring the closure of one or more traffic lanes in an urban area.

Calculate L as follows:

SPEED LIMIT	FORMULAS	
70 km/h (40 mph) or less:	Metric $L = \frac{WS^2}{150}$	(English) $L = \frac{WS^2}{60}$

80 km/h (45 mph) or greater: $L = 0.65(W)(S)$ $L = (W)(S)$

W = Width of offset in meters (feet).

S = Normal posted speed km/h (mph).

All dimensions are in millimeters (inches) unless otherwise shown.

DATE	REVISIONS
1-1-08	Replaced arrow board with lane shift sign.
	Added notes ⑥ & ⑦
1-1-05	Added tangent distance to 2 lane closure taper.

**URBAN LANE CLOSURE,
MULTILANE, 2W WITH
MOUNTABLE MEDIAN**

(Sheet 1 of 2)

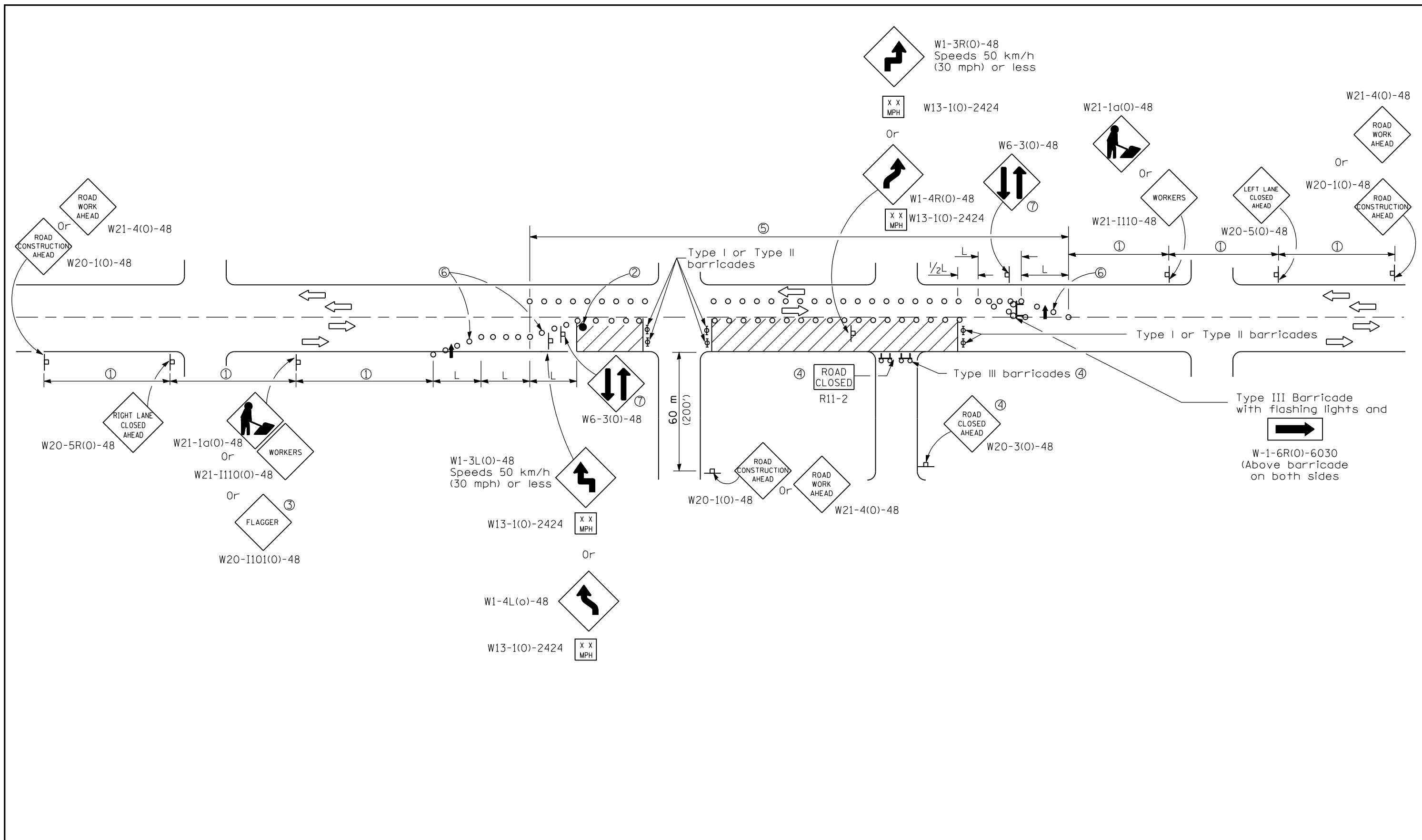
STANDARD 701606-05

Illinois Department of Transportation

APPROVED January 1, 2008
ENGINEER OF OPERATIONS

APPROVED January 1, 2008
ENGINEER OF DESIGN AND ENVIRONMENT

ISSUED 1-1-97



Illinois Department of Transportation

APPROVED January 1, 2008
 ENGINEER OF OPERATIONS
 APPROVED January 1, 2008
 ENGINEER OF DESIGN AND ENVIRONMENT

ISSUED 1-1-97

URBAN LANE CLOSURE,
 MULTILANE, 2W WITH
 MOUNTABLE MEDIAN
 (Sheet 2 of 2)

STANDARD 701606-05