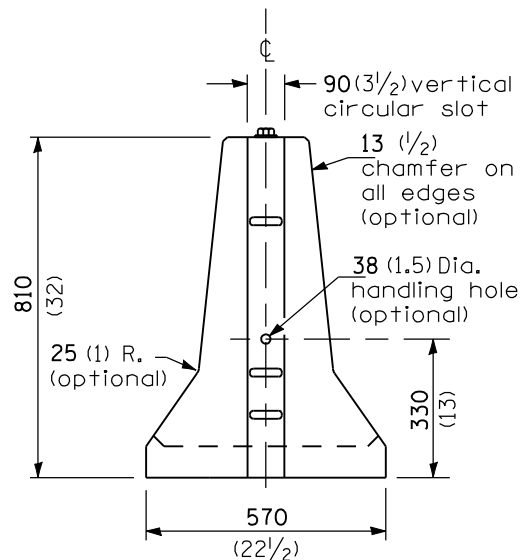
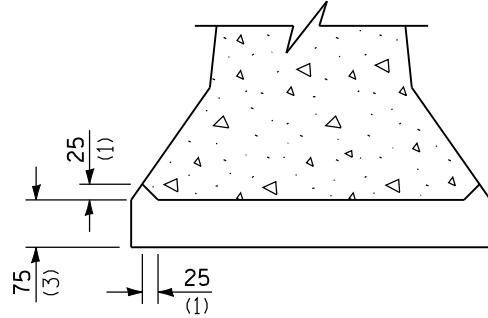


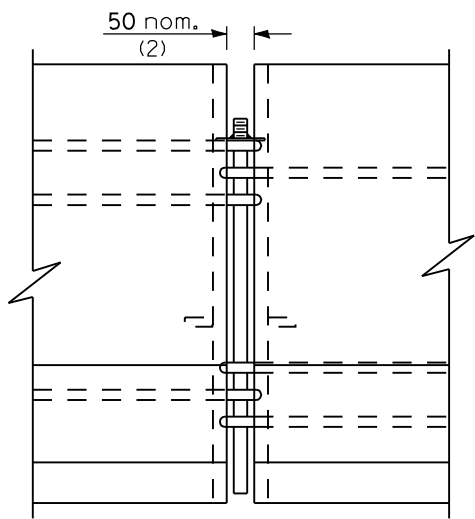
F SHAPE DESIGN



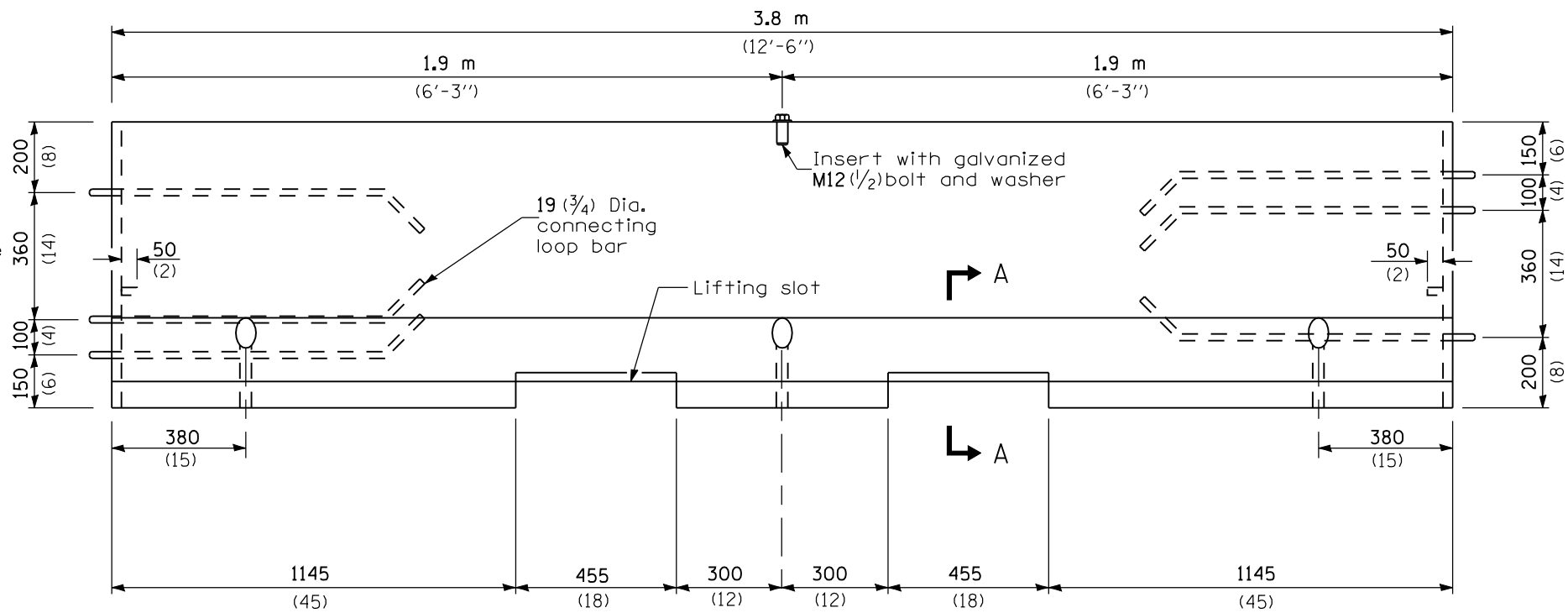
END VIEW
(Showing lifting slot)



SECTION A-A
LIFTING SLOT

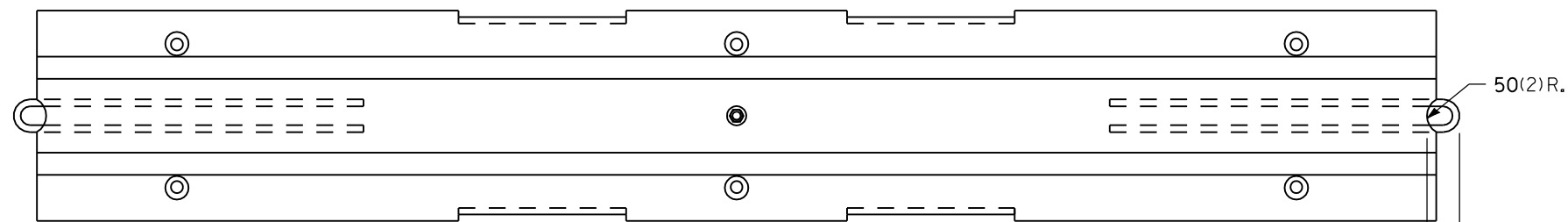


CONNECTING DETAIL

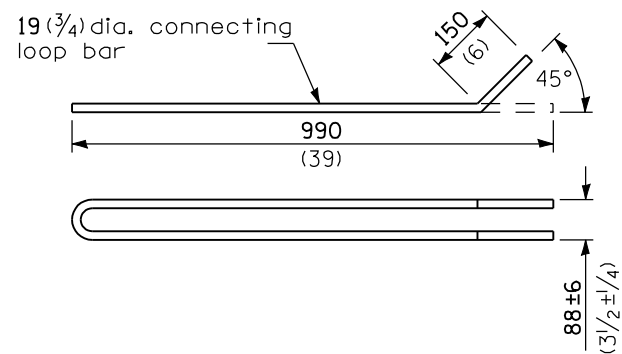


ELEVATION

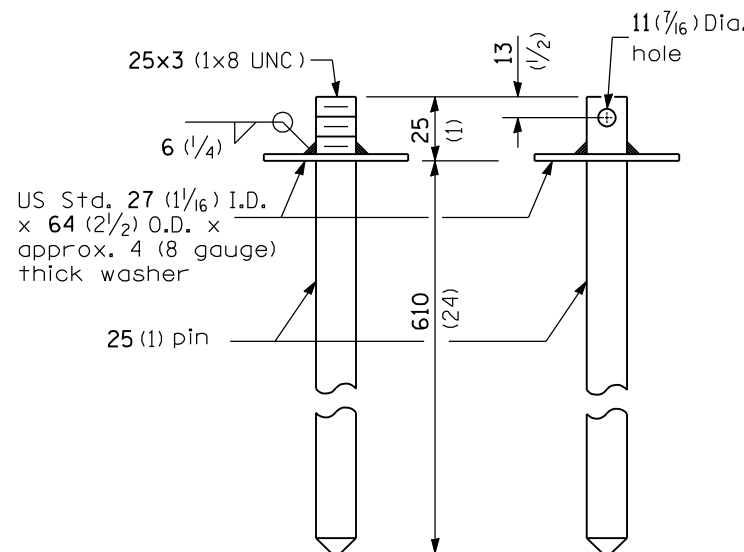
(Showing connecting loop bars and vertical panel bolt/insert)



PLAN

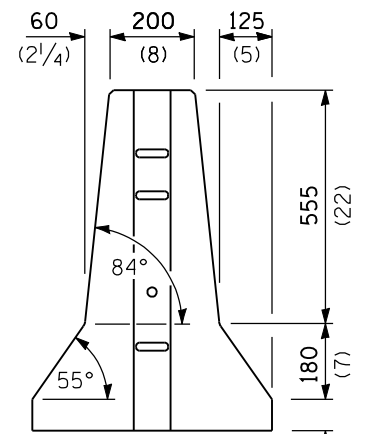


CONNECTING LOOP BAR

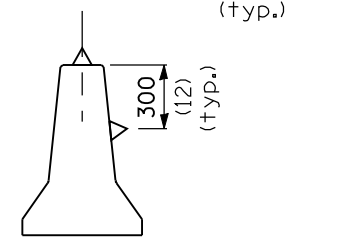
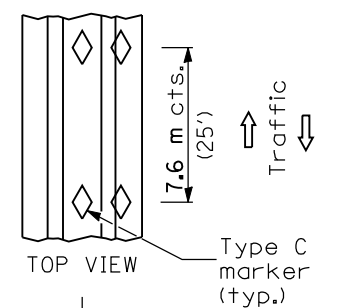


ALTERNATE CONNECTING AND ANCHOR PINS

(End may be beveled 6 (1/4) max.)



END VIEW



BARRIER WALL MARKERS

63 (2 1/2) measured from face of barrier to end of loop bar

GENERAL NOTES

Each F shape barrier shall be clearly marked with "ILLINOIS F SHAPE", the Producer's mark and the date of manufacture. The markings shall be indented on the barrier or painted thereon with waterproof paint/ink.

The insert for the M12 (1/2) bolt shall be capable of 13 kN (3,000 lb) pull-out strength.

All dimensions are in millimeters (inches) unless otherwise shown.

DATE	REVISIONS
1-1-08	Added Barrier Wall Markers detail.
1-1-07	Deleted New Jersey shape (Sheet 3).

TEMPORARY CONCRETE BARRIER

(Sheet 1 of 2)

STANDARD 704001-04

Illinois Department of Transportation

PASSED January 1, 2008

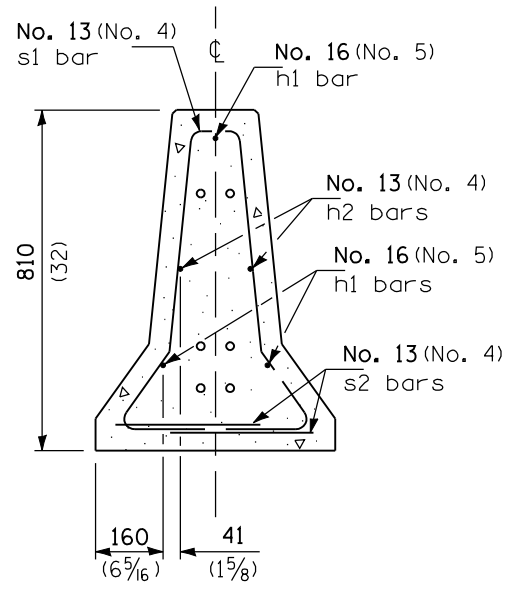
ISSUED 10-1-02

ENGINEER OF POLICY AND PROCEDURES

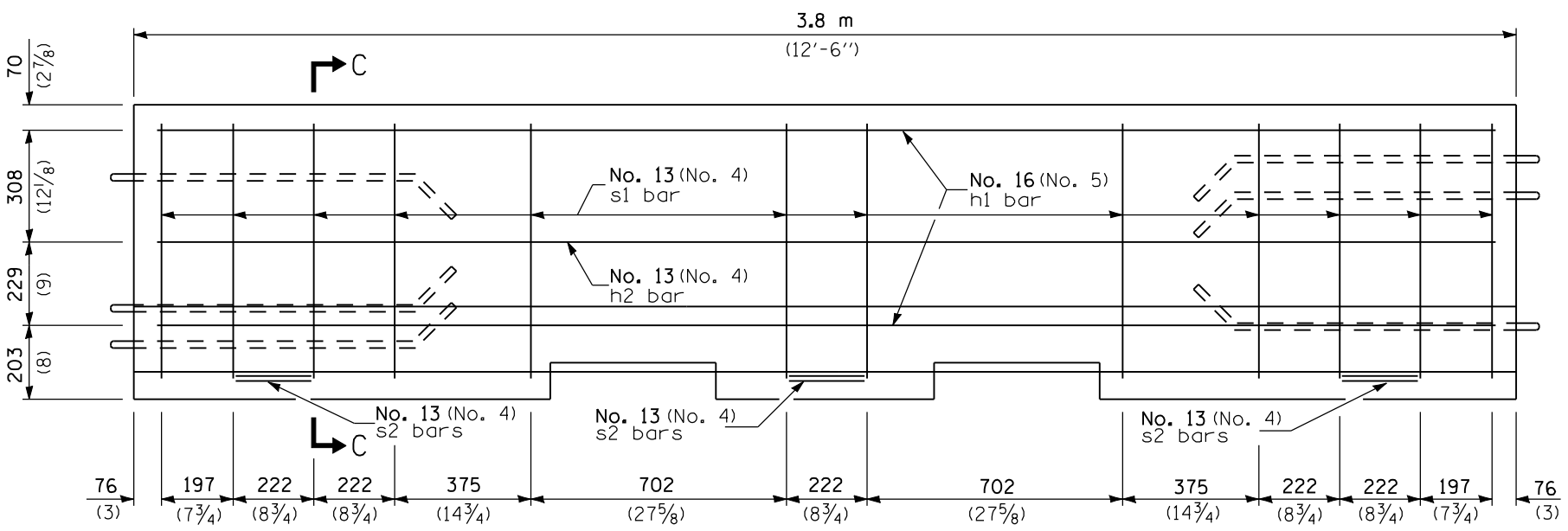
APPROVED January 1, 2008

ENGINEER OF DESIGN AND ENVIRONMENT

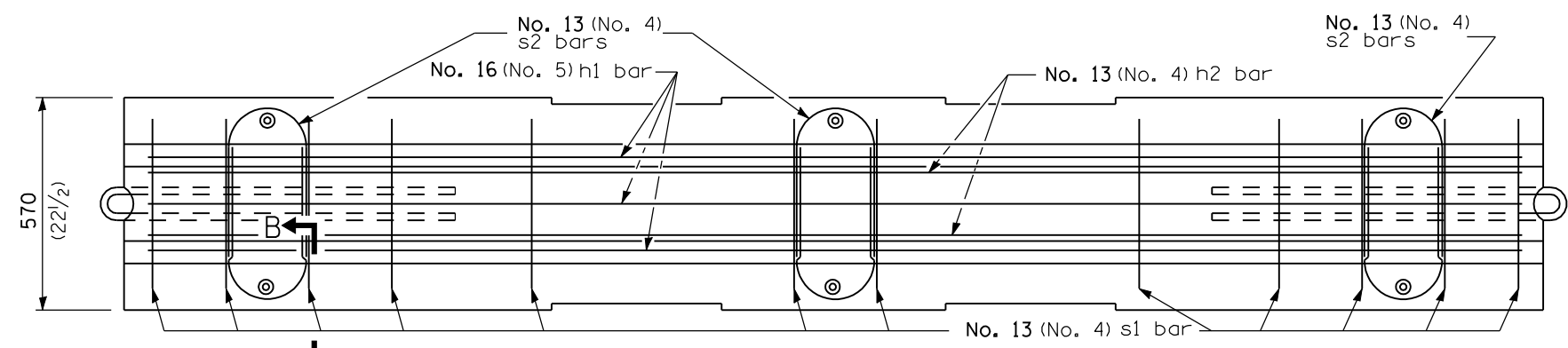
F SHAPE DESIGN



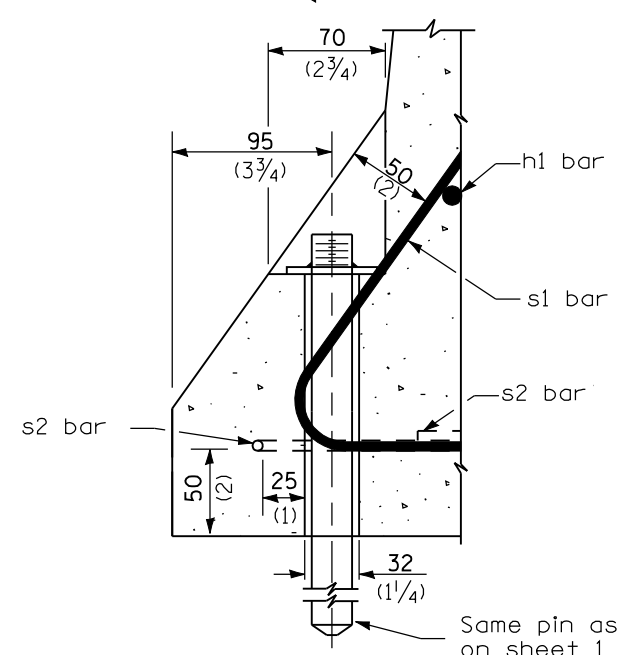
SECTION C-C



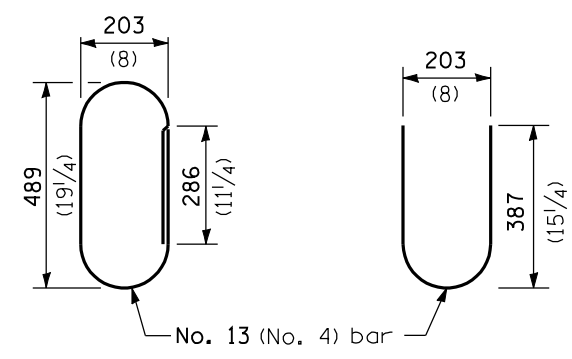
ELEVATION
(Reinforcement)



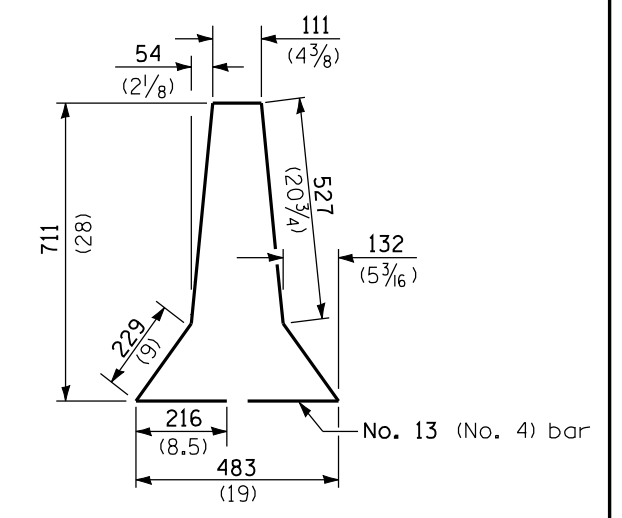
PLAN



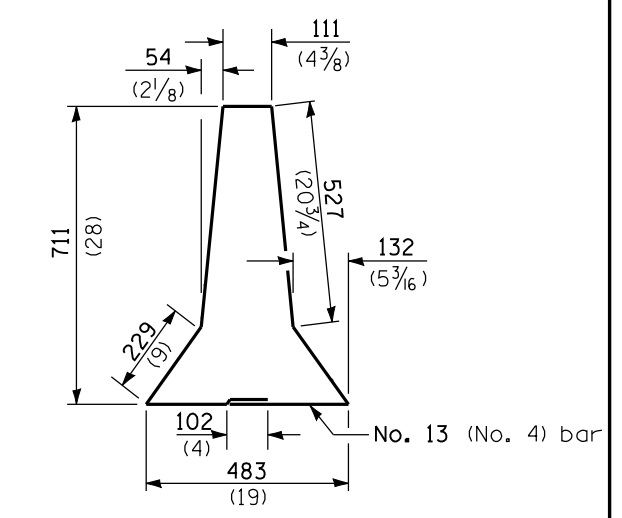
SECTION B-B
ANCHORING DETAIL



ALTERNATE s2 BARS



s1 BAR



ALTERNATE s1 BAR

Illinois Department of Transportation
 PASSED January 1, 2008
 ENGINEER OF POLICY AND PROCEDURES
 APPROVED January 1, 2008
 ENGINEER OF DESIGN AND ENVIRONMENT

TEMPORARY CONCRETE BARRIER
 (Sheet 2 of 2)
STANDARD 704001-04