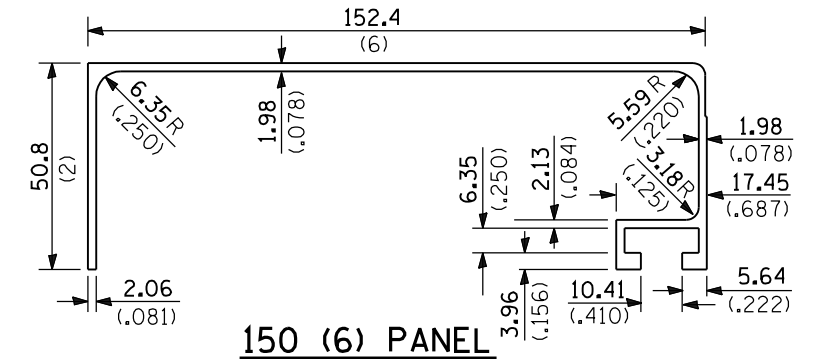
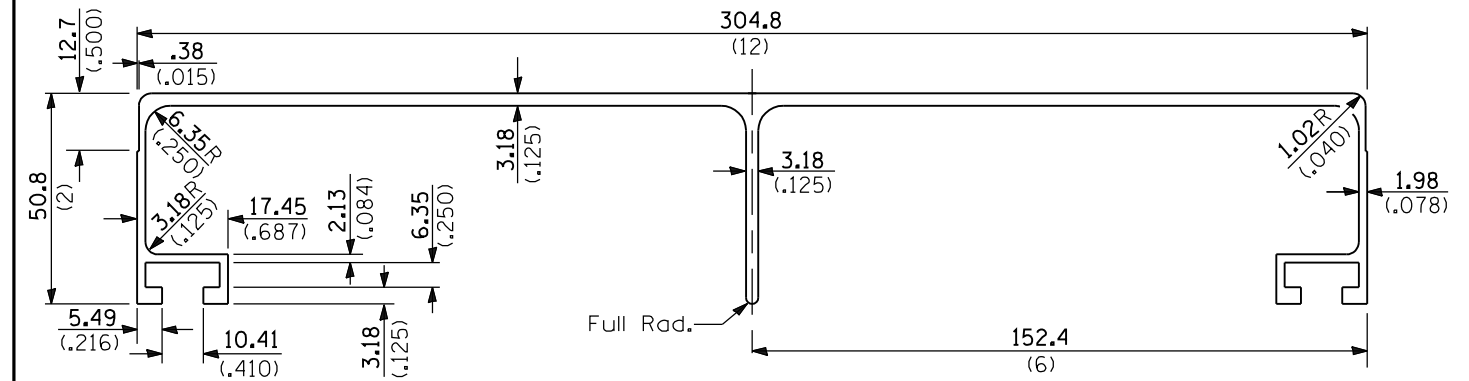


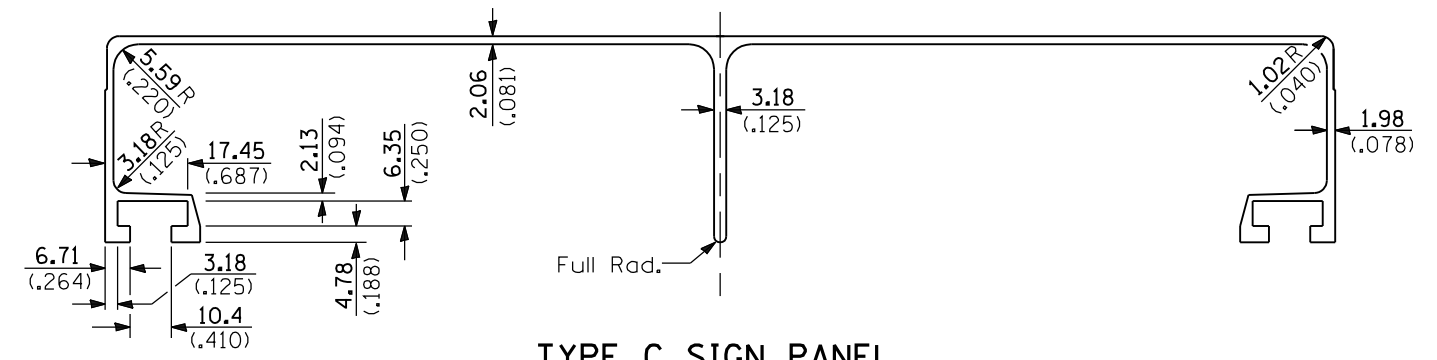
FACE OF SIGN PANEL



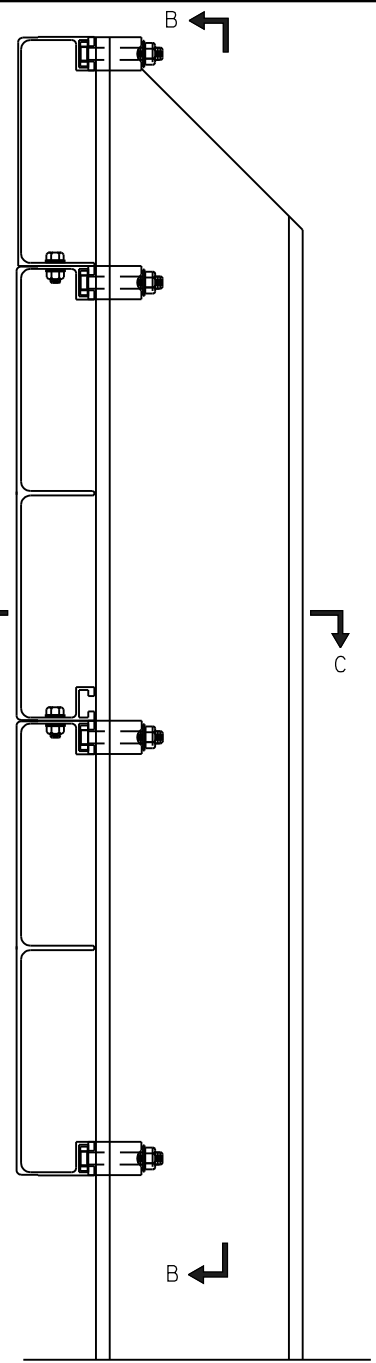
150 (6) PANEL



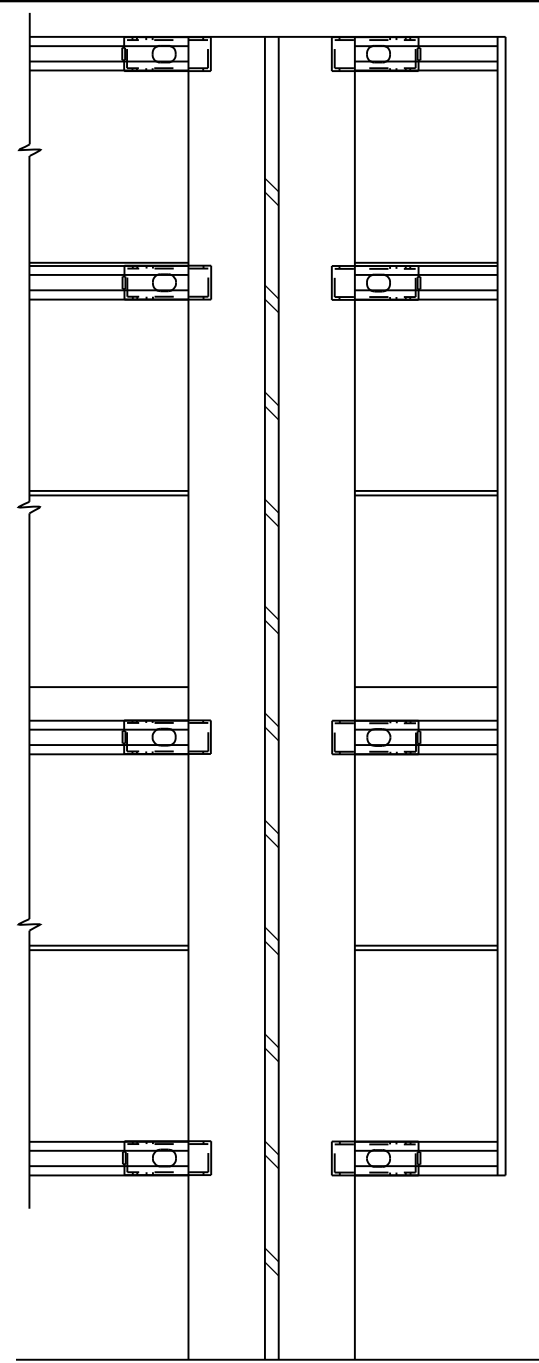
TYPE B SIGN PANEL



TYPE C SIGN PANEL

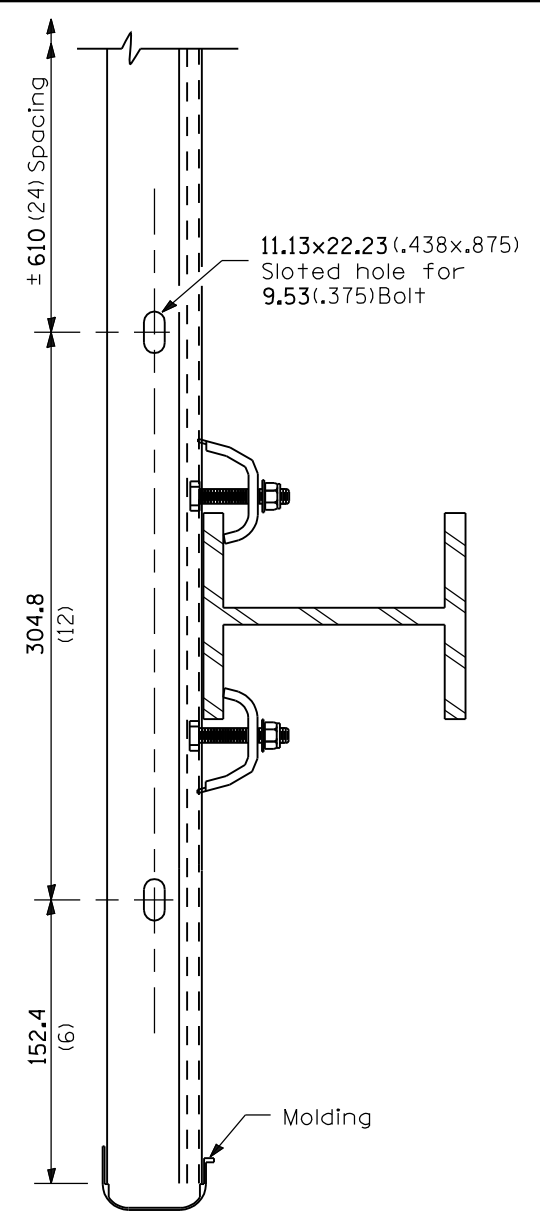


SECTION A-A

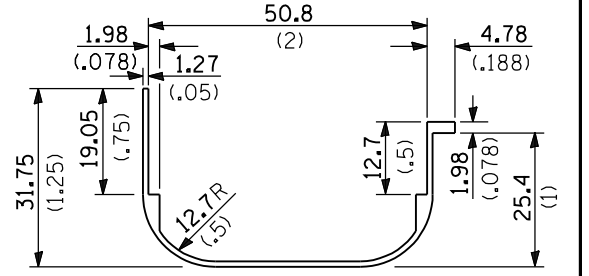


SECTION B-B

(Provide two post clips top and bottom. Alternate at interior panel joints on ground-mounted signs, and provide two clips at all panel joints on over-head mounted signs.)



SECTION C-C  
(w/o panel bolts)



SIGN MOLDING

(Color shall match sign facematerial. To be riveted to sign panel at 600 (24) O.C.)

All dimensions are in millimeters (inches) unless otherwise shown.

Illinois Department of Transportation

APPROVED January 1, 2003  
ENGINEER OF OPERATIONS

APPROVED January 1, 2003  
ENGINEER OF DESIGN AND ENVIRONMENT

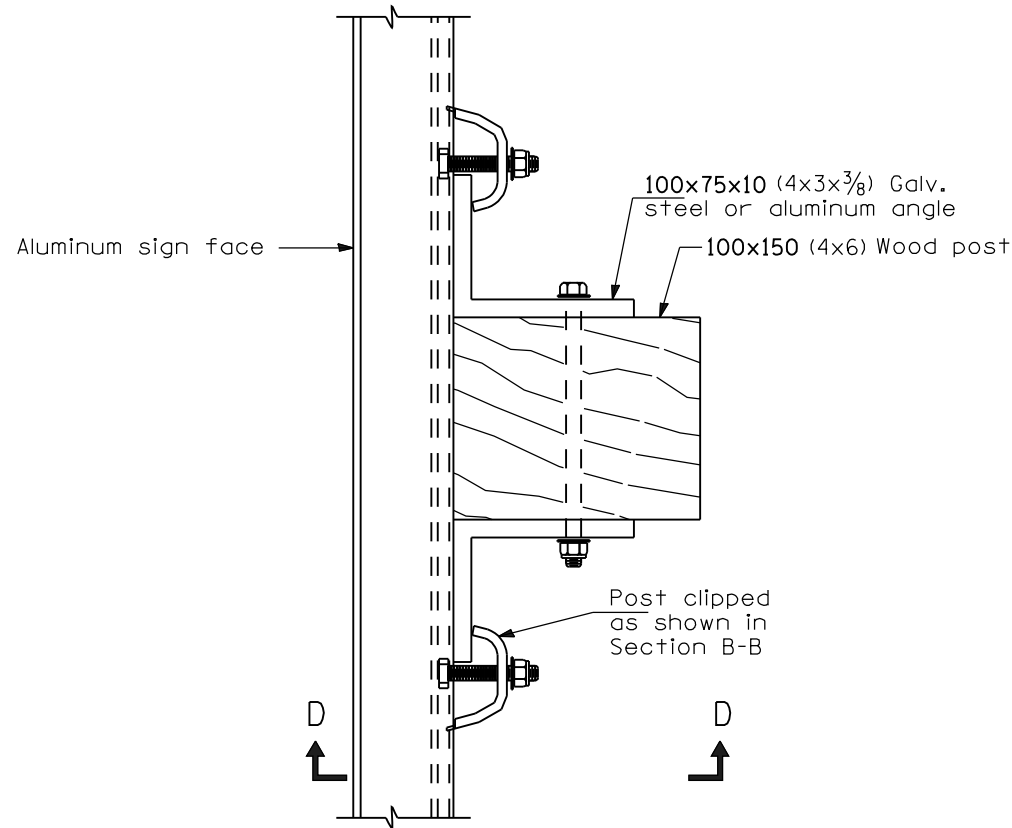
ISSUED 1-1-00

DATE	REVISIONS
1-1-03	Revised stainless steel clip design, and minor changes.
1-1-00	New Standard.

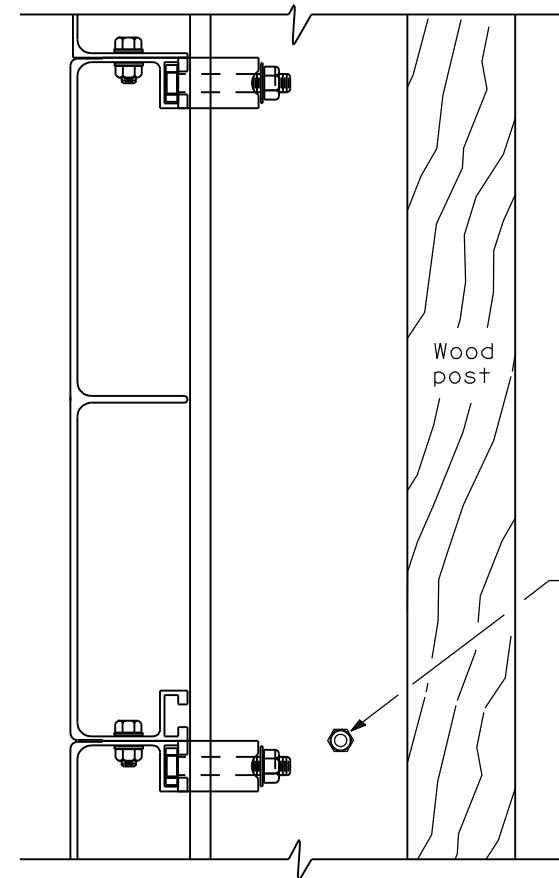
**SIGN PANELS  
EXTRUDED ALUMINUM TYPE**

(Sheet 1 of 2)

**STANDARD 720021-01**

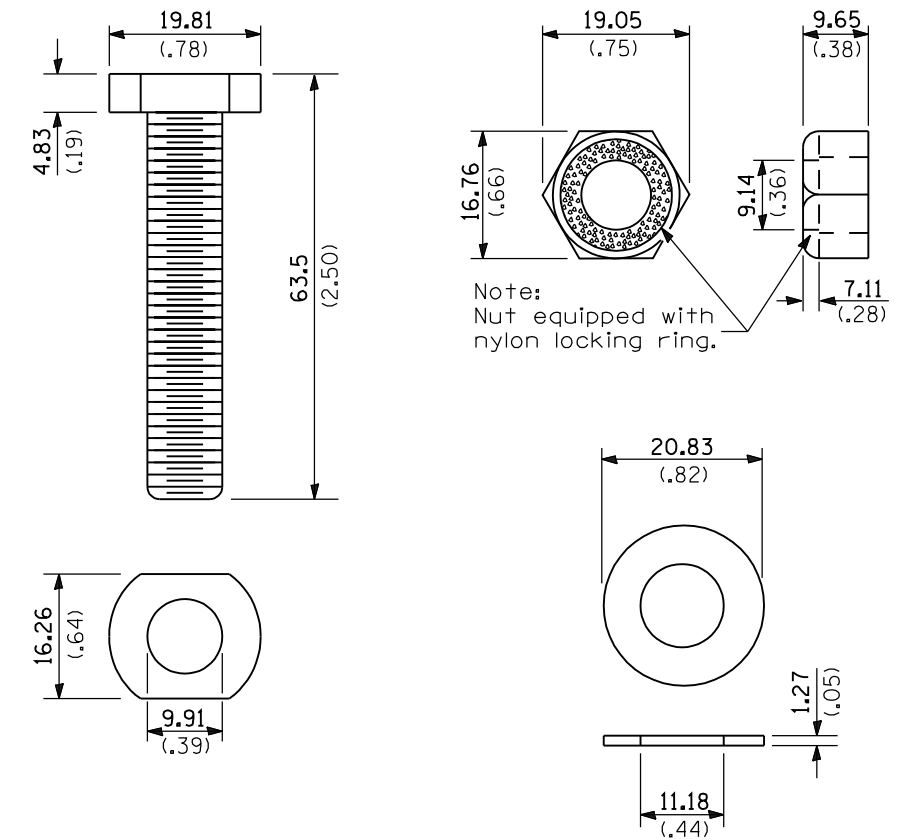


**SIGN PANEL ATTACHMENT TO WOOD POST**



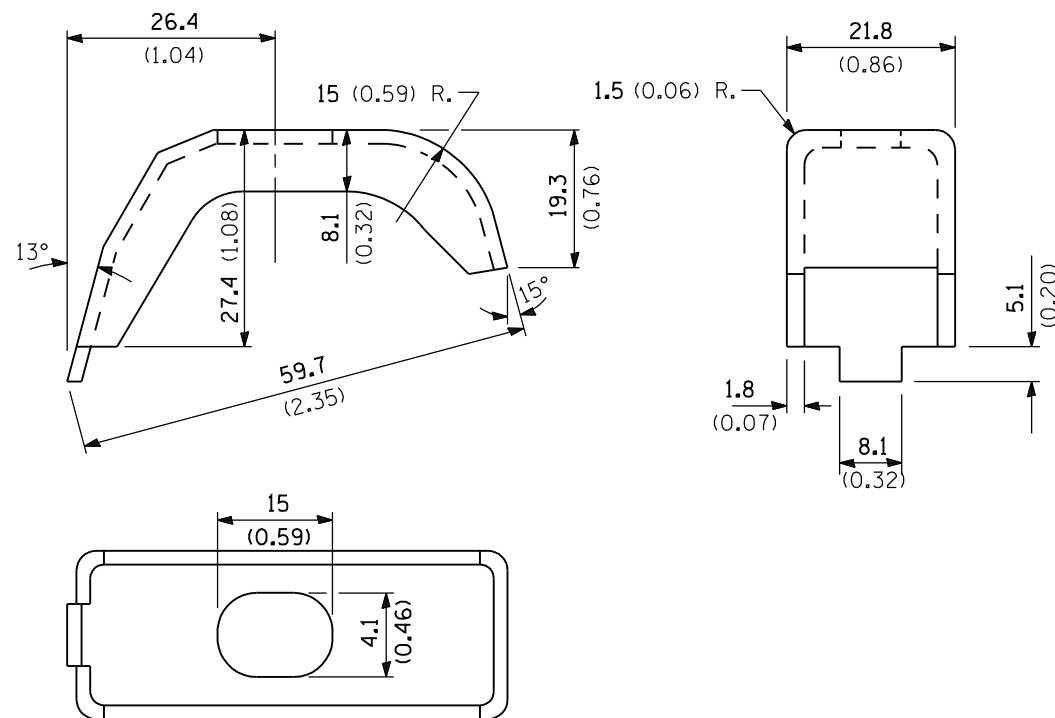
**SECTION D-D**

M10 (3/8) Bolt with flat washer, lock washer and nut 450 (18) O.C. (min. of 3 bolts to be used)



Note: Nut equipped with nylon locking ring.

**STAINLESS STEEL CLIP NUT, BOLT AND WASHER ASSEMBLY**



**STAINLESS STEEL CLIP**

Illinois Department of Transportation  
 APPROVED January 1, 2003  
 ENGINEER OF OPERATIONS  
 APPROVED January 1, 2003  
 ENGINEER OF DESIGN AND ENVIRONMENT

ISSUED 1-1-00

**SIGN PANELS  
 EXTRUDED ALUMINUM TYPE**  
 (Sheet 2 of 2)  
**STANDARD 720021-01**