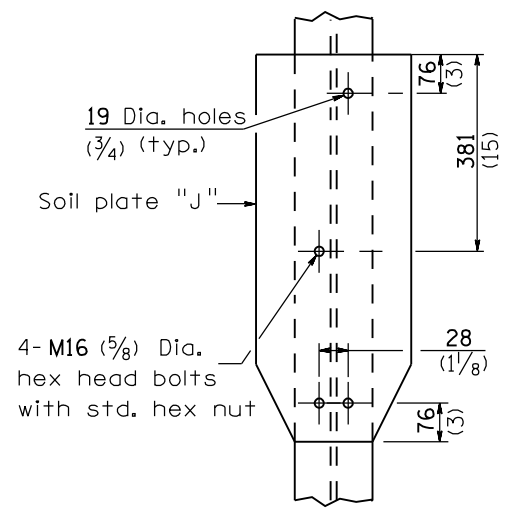
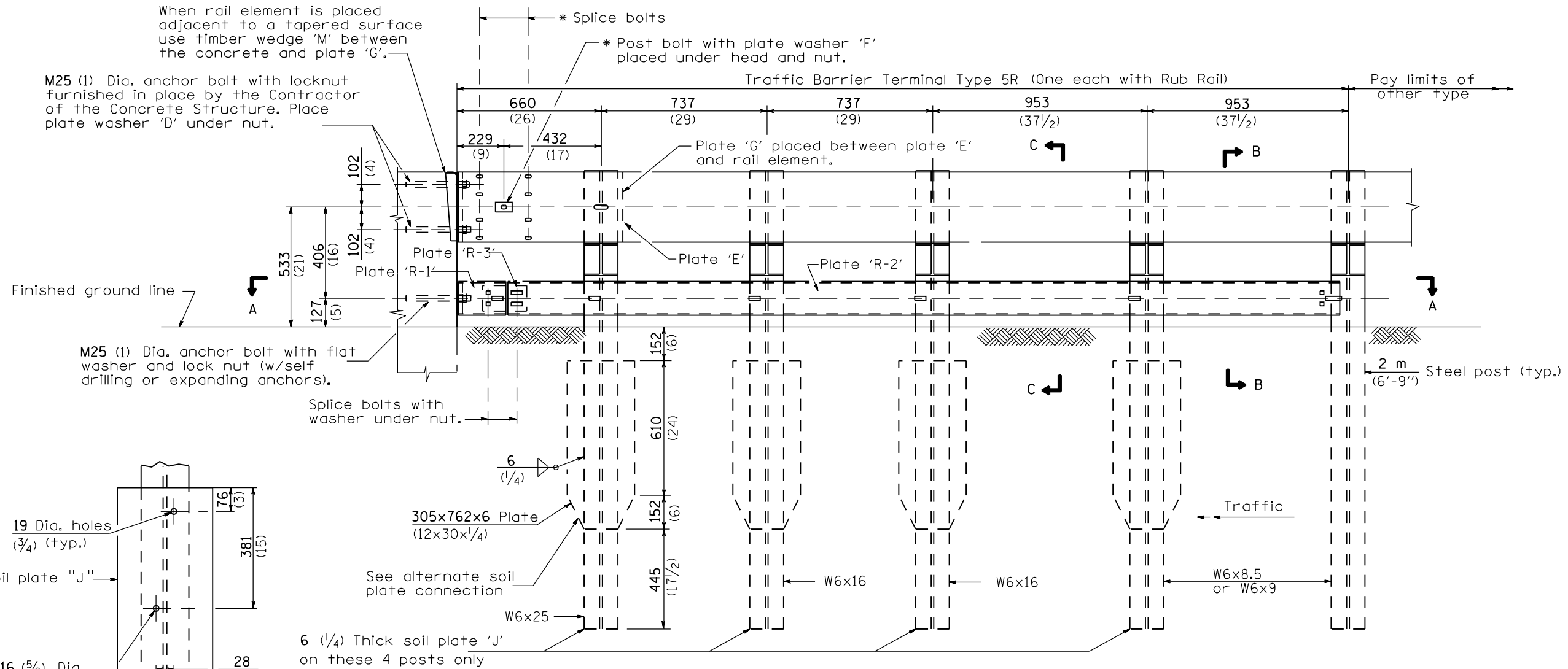


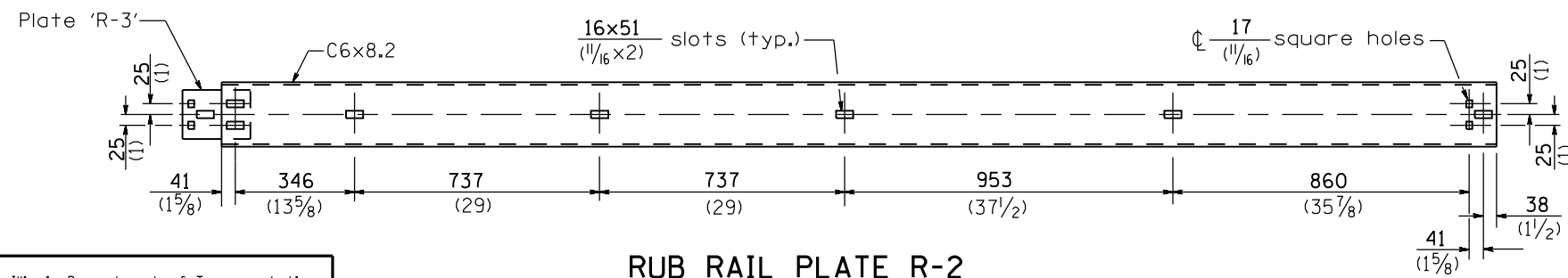
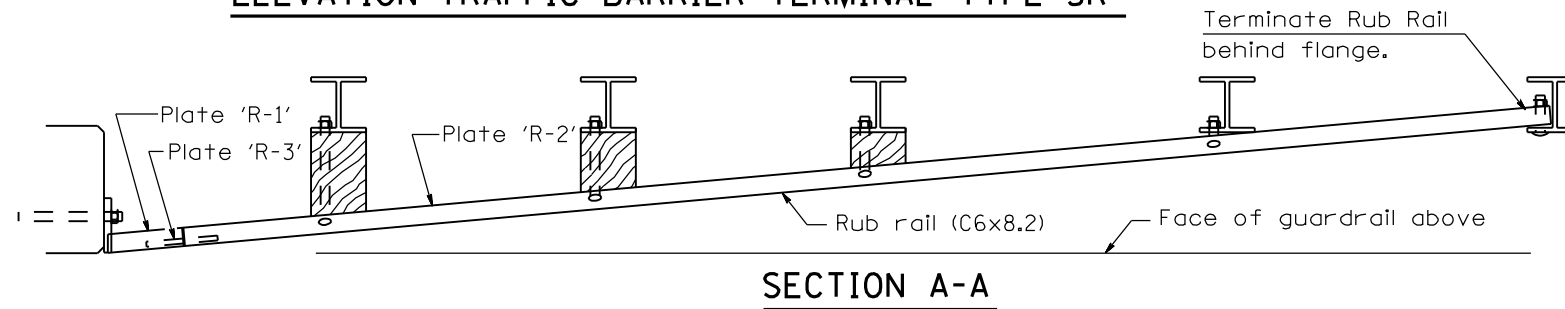
When rail element is placed adjacent to a tapered surface use timber wedge 'M' between the concrete and plate 'G'.

M25 (1) Dia. anchor bolt with locknut furnished in place by the Contractor of the Concrete Structure. Place plate washer 'D' under nut.



**ALTERNATE SOIL PLATE CONNECTION**

**ELEVATION-TRAFFIC BARRIER TERMINAL TYPE 5R**



**GENERAL NOTES**

See Standard B.L.R. 26 for details of guardrail not shown.

Install the face of the guardrail flush with the face of the parapet. Install place washer "D" so that the 25 mm (1") projection fills the remainder of the slotted holes in the 25 mm (1") end plate on plate "G" after the 25 mm (1") bolts are in place.

\* When an expansion joint exists below the connector, bolts shall be provided with locknut or double nut and shall be tightened only to a point that will allow plate G to be free to move.

All dimensions are in millimeters (inches) unless otherwise shown.

DATE	REVISIONS
1-1-08	Revised General Notes, revised Plate Washer F.
1-1-00	Revised block-outs to wood. Removed "A" Plates

**TRAFFIC BARRIER TERMINAL-TYPE 5R**

(Sheet 1 of 2)

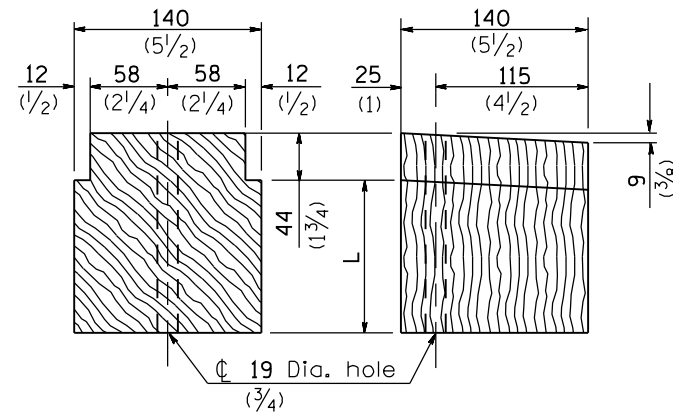
**STANDARD B.L.R. 20-5**

Illinois Department of Transportation

APPROVED January 1, 2008  
*Charles J. D. [Signature]*  
 ENGINEER OF LOCAL ROADS AND STREETS

APPROVED January 1, 2008  
*[Signature]*  
 ENGINEER OF DESIGN AND ENVIRONMENT

ISSUED 1-1-07

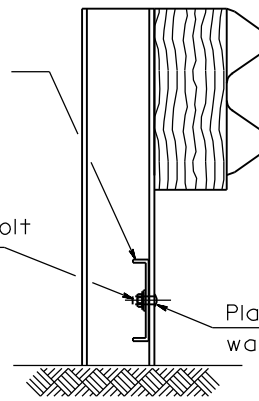


**TREATED TIMBER BLOCKING**

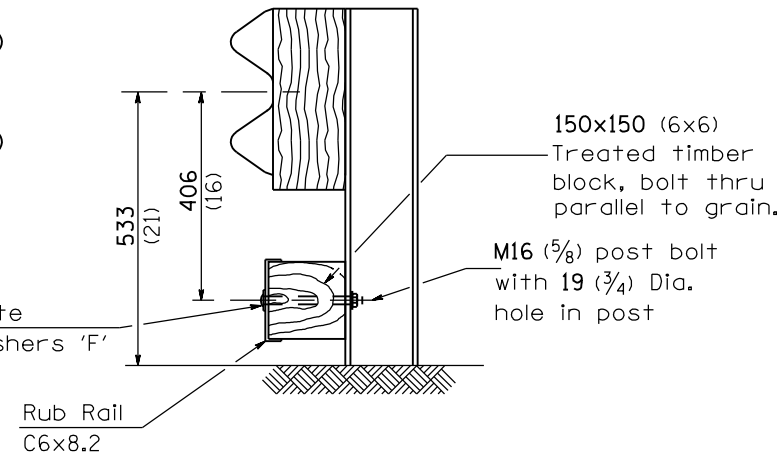
\*\* Approximate Lengths Field Verify

** L
187 (7 3/8)
143 (5 5/8)
98 (3 7/8)

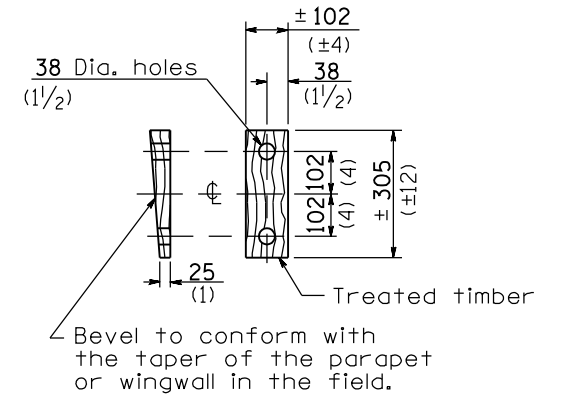
Terminate Rub Rail behind flange  
16 (5/8) Dia. post bolt with 19 (3/4) Dia. hole in post



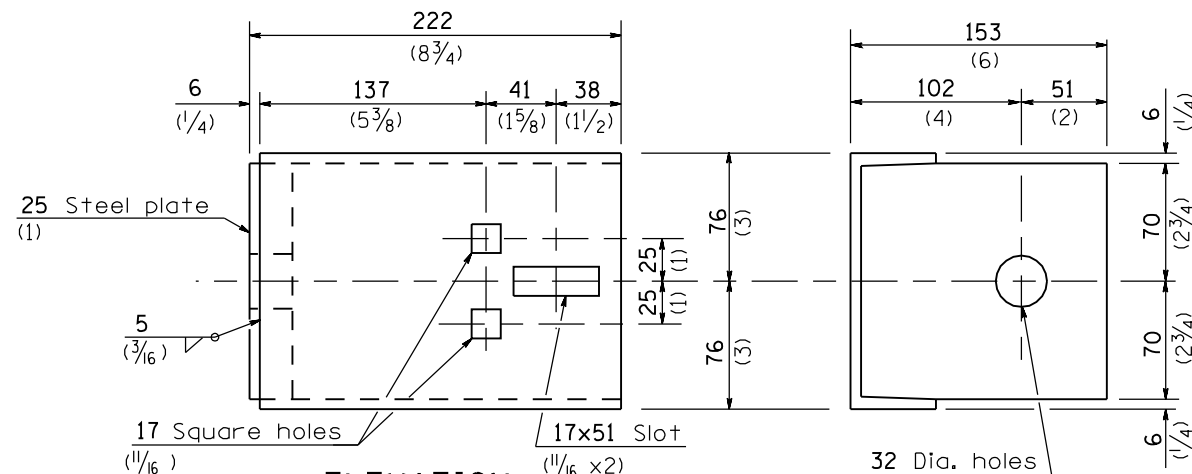
**SECTION B-B**



**SECTION C-C**

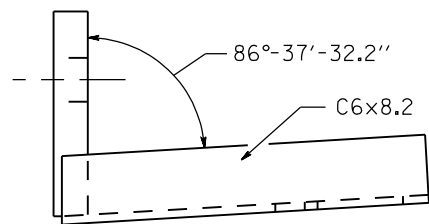


**WEDGE M**



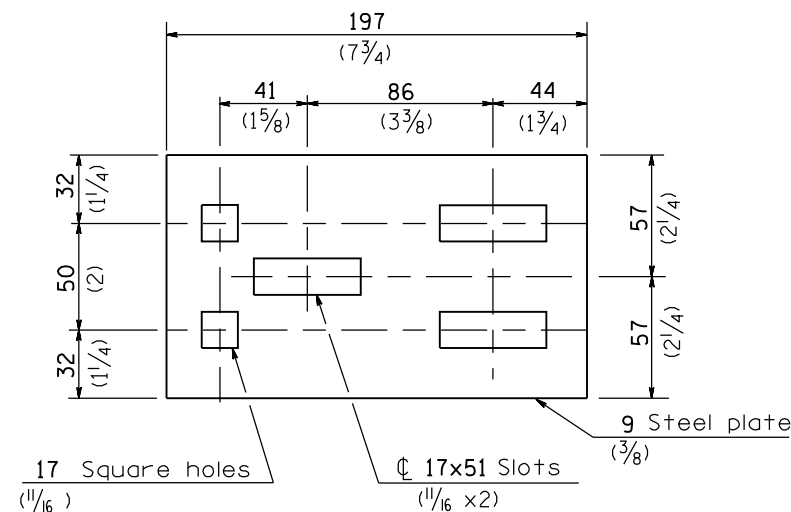
**ELEVATION**

**END VIEW**

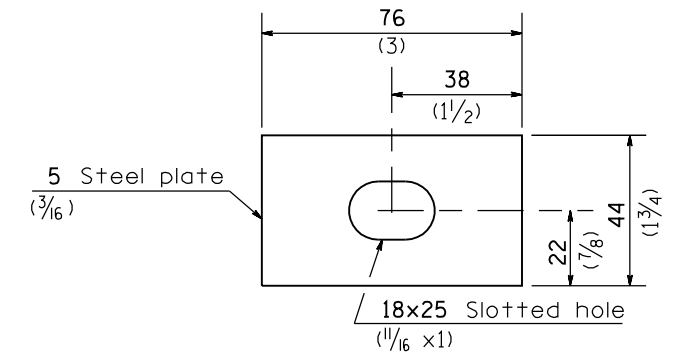


**PLAN**

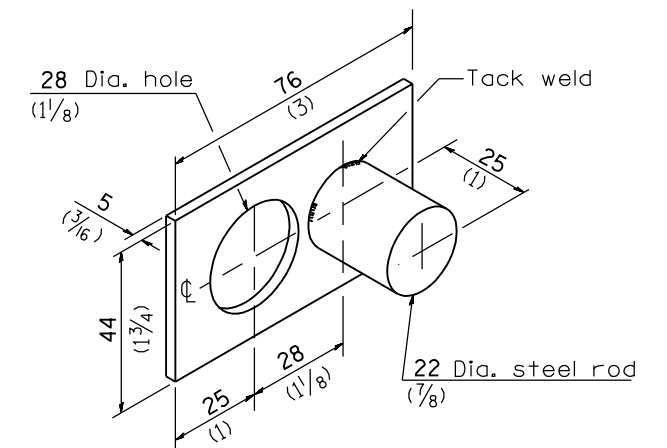
**RUB RAIL PLATE R-1**



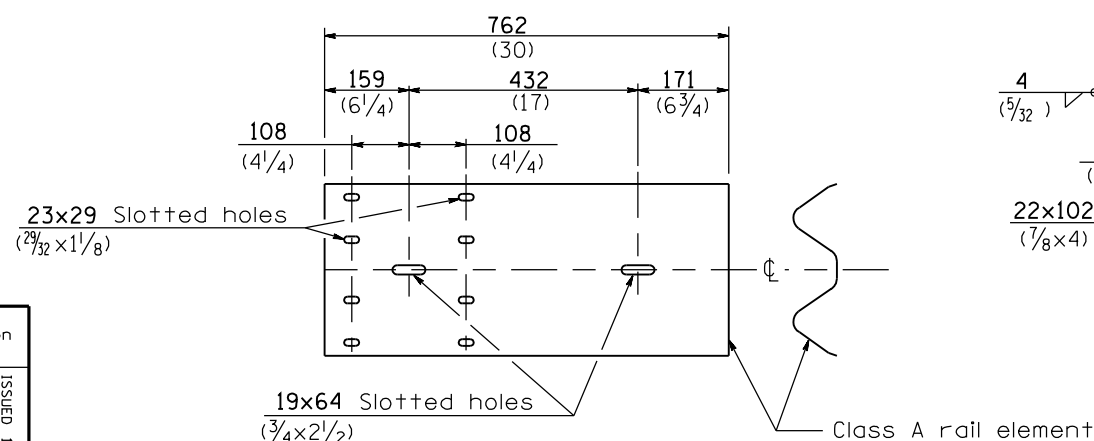
**SPLICE PLATE 'R-3'**



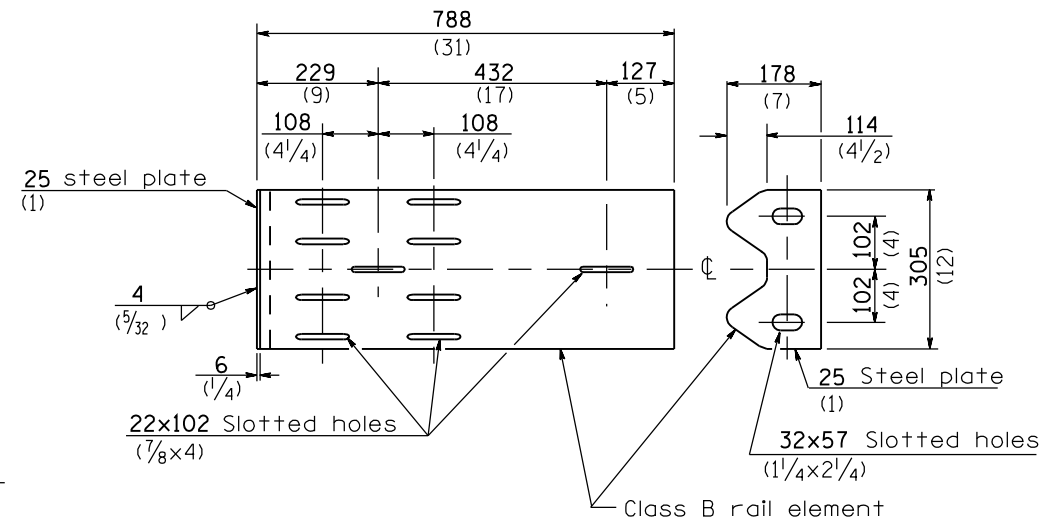
**PLATE WASHER F**



**PLATE WASHER D**



**PLATE E**



**PLATE G**

All dimensions are in millimeters (inches) unless otherwise shown.

**TRAFFIC BARRIER  
TERMINAL-TYPE 5R**

(Sheet 2 of 2)

**STANDARD B.L.R. 20-5**

Illinois Department of Transportation  
 APPROVED January 1, 2008  
 Charles J. Russell  
 ENGINEER OF LOCAL ROADS AND STREETS  
 APPROVED January 1, 2008  
 Eric E. Han  
 ENGINEER OF DESIGN AND ENVIRONMENT  
 ISSUED 1-1-07