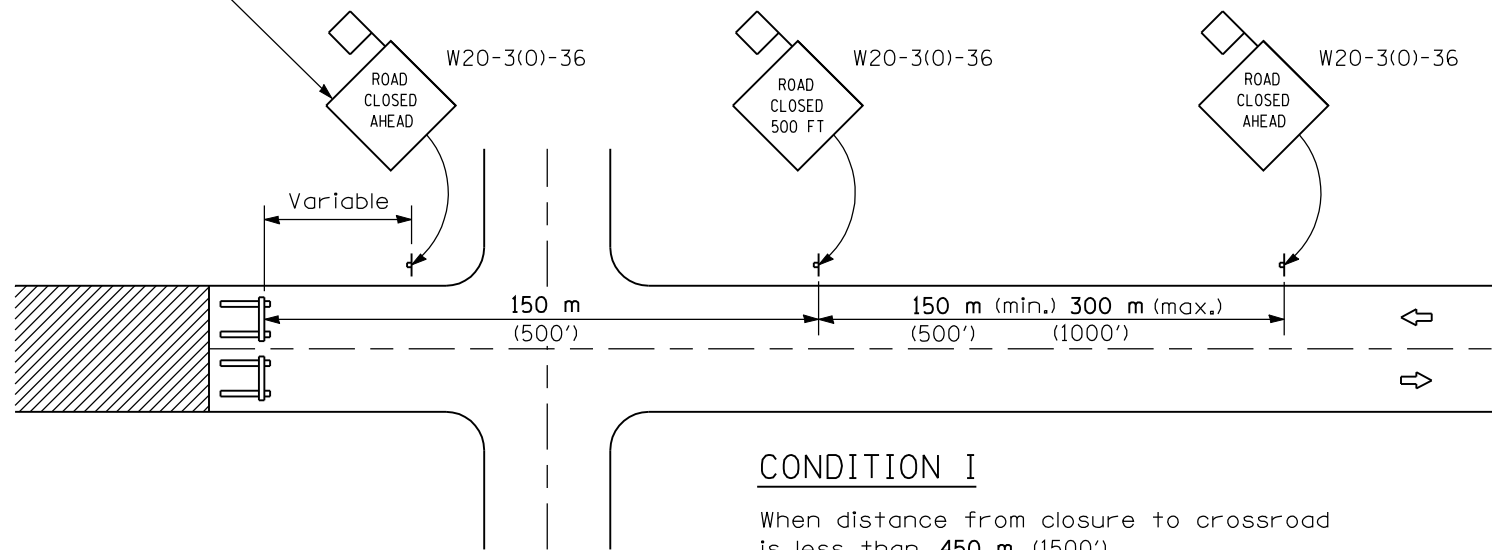
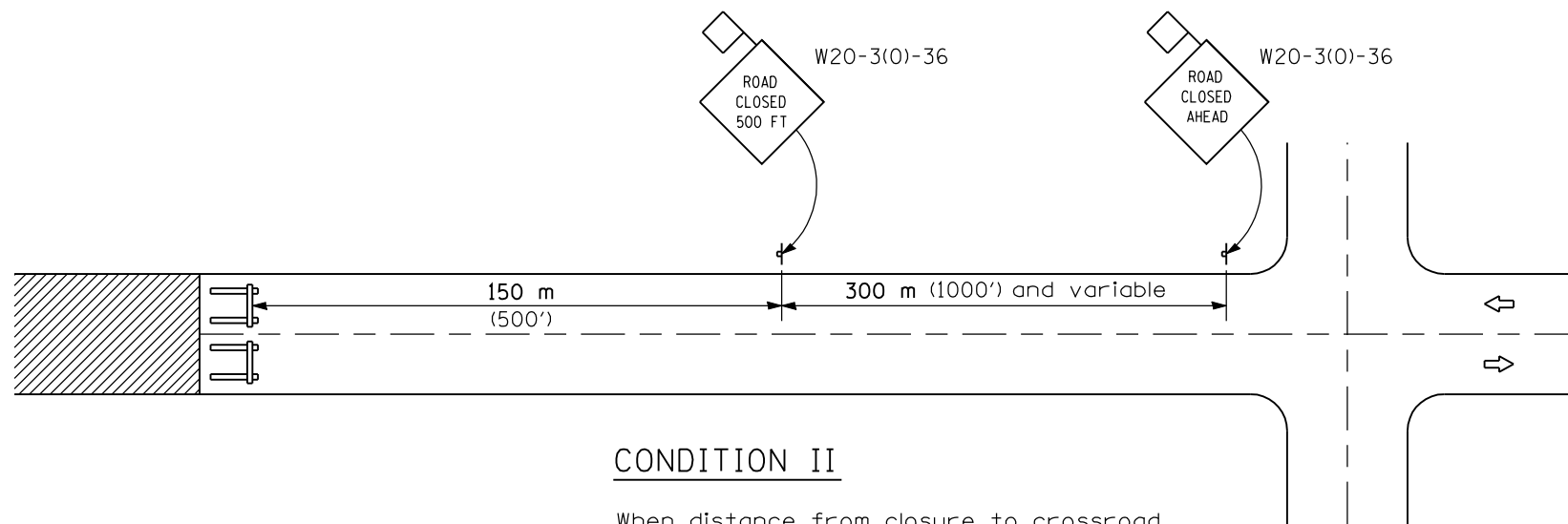


Sign may be omitted when distance is less than 45 m (150').



CONDITION I

When distance from closure to crossroad is less than 450 m (1500')



CONDITION II

When distance from closure to crossroad is greater than 450 m (1500')

SYMBOLS



Work area



Type III Barricade



Sign with 450 (18) by 450 (18) (minimum) orange flag attached

GENERAL NOTES

Type III Barricades and R11-2-4830 signs shall be positioned as shown in "Road Closed To All Traffic" detail on Highway Standard 701901.

Two Type A Low Intensity Flashing Lights shall be used on each approach in advance of the work area during hours of darkness. One light shall be installed above the barricades and the other above the first advance warning sign.

All signs shall be post mounted if the closure time exceeds four days.

All warning signs shall have minimum dimensions of 900 x 900 (36 x 36) and have a black legend on an orange reflectorized background.

All work zone signs are required to meet, as a minimum, Type B reflectivity requirements of Table 1091-2 in Article 1091.02 of the Standard Specifications.

Longitudinal dimensions may be adjusted to fit field conditions.

When the distance between the barricade and the intersection is between 450 m (1500') and 600 m (2000'), the advance sign shall be placed at the intersection. When the distance between the barricade and the intersection is over 600 m (2000'), an additional sign shall be placed at the intersection. The additional sign shall give the distance to the barricade in miles or fractions of a mile.

When fluorescent signs are used, orange flags are not required.

All dimensions are in millimeters (inches) unless otherwise shown.

DATE	REVISIONS
1-1-08	Revised General Notes to reference Standard 701901.
1-1-03	Revised specification reference in 5th General Note.

TYPICAL APPLICATION OF TRAFFIC CONTROL DEVICES FOR CONSTRUCTION ON RURAL LOCAL HIGHWAYS

STANDARD B.L.R. 21-7

Illinois Department of Transportation

APPROVED January 1, 2008
Charles J. Russell
 ENGINEER OF LOCAL ROADS AND STREETS

ISSUED 1-1-97

APPROVED January 1, 2008
Ken E. Han
 ENGINEER OF DESIGN AND ENVIRONMENT