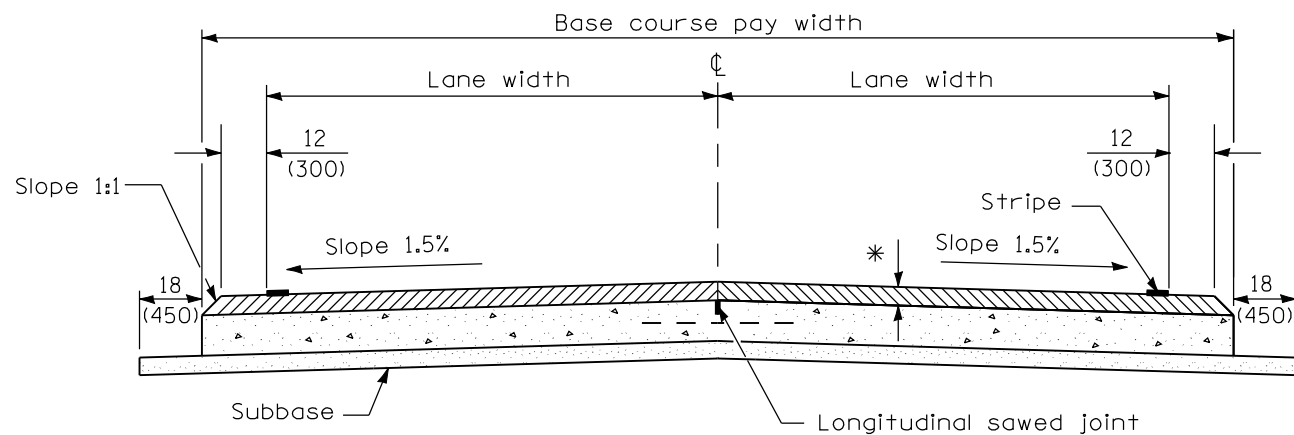
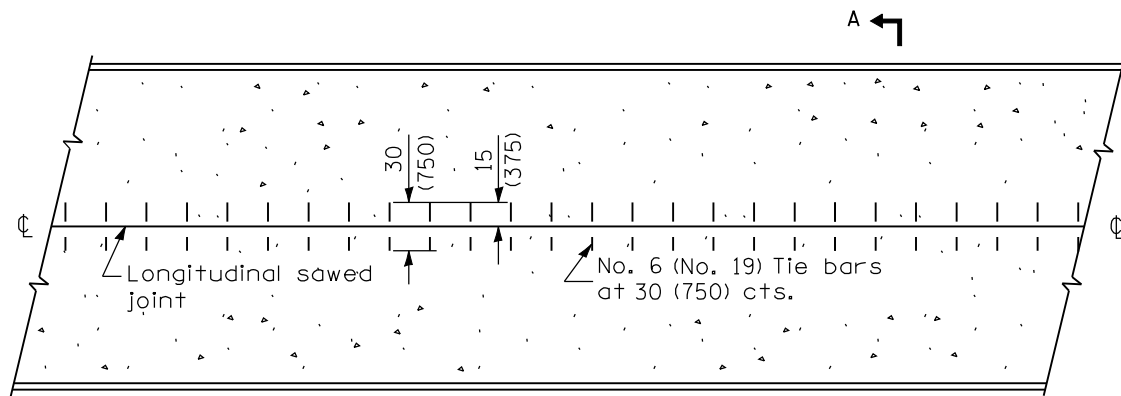


* HMA binder and surface courses

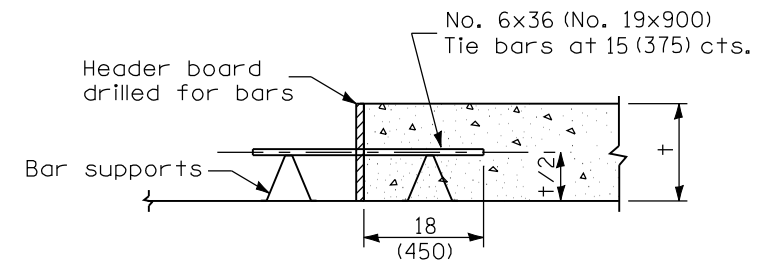
SECTION A-A
(TYPICAL 2 LANE WITH SHOULDERS)



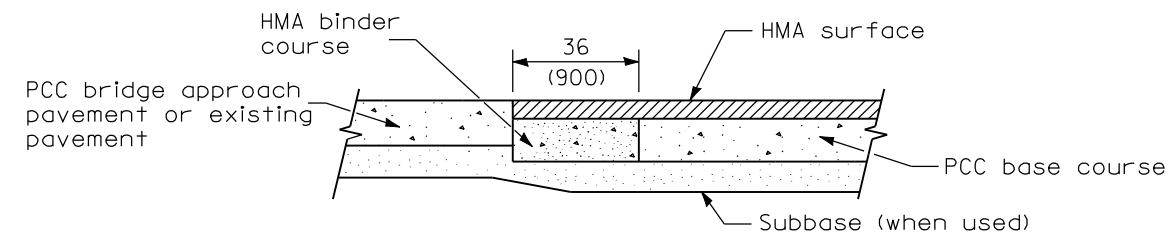
ALTERNATE SECTION A-A
(TYPICAL 2 LANE WITH SHOULDERS)



PLAN



TRANSVERSE CONSTRUCTION JOINT



**LONGITUDINAL SECTION SHOWING
CONSTRUCTION ADJACENT
TO PCC BRIDGE APPROACH PAVEMENT
OR EXISTING PAVEMENT**

GENERAL NOTES

The longitudinal sawed joint shall be as detailed on Standard 420001 except the sawed groove does not require sealing.

All dimensions are in inches (millimeters) unless otherwise shown.

DATE	REVISIONS
1-1-08	Switched units to English (metric).
1-1-07	Switched to Hot-Mix Asphalt (HMA) terminology.

**PCC BASE COURSE
WITH HMA BINDER AND
SURFACE COURSES**

STANDARD 353001-04

Illinois Department of Transportation

PASSED January 1, 2008
ENGINEER OF POLICY AND PROCEDURES

APPROVED January 1, 2008
ENGINEER OF DESIGN AND ENVIRONMENT

ISSUED 1-1-97