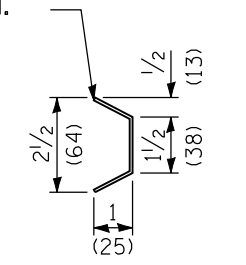
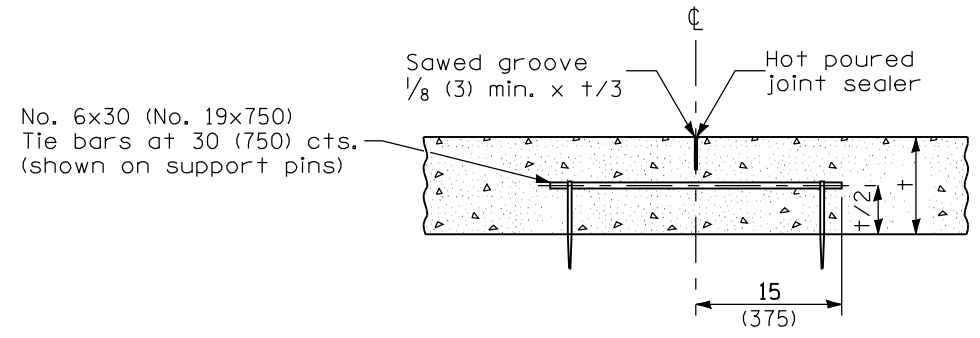


**TYPE C METAL JOINT**

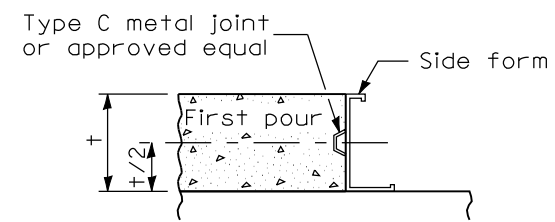
Sheet steel of suitable thickness to form keyway as detailed or approved equal.



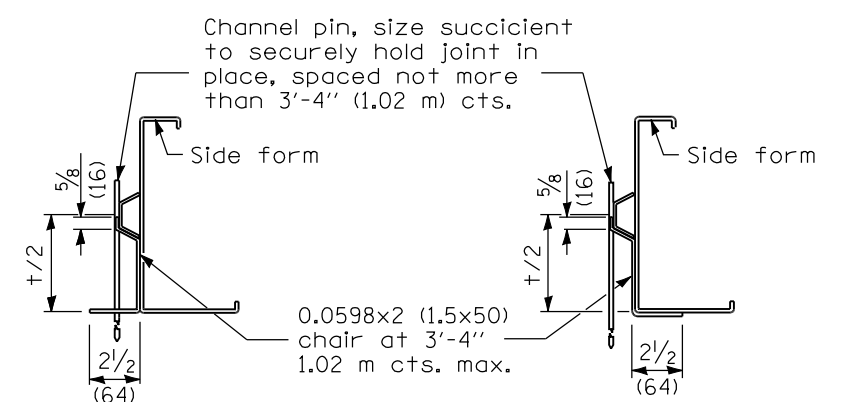
**SECTION A-A**



**LONGITUDINAL SAWED JOINT**

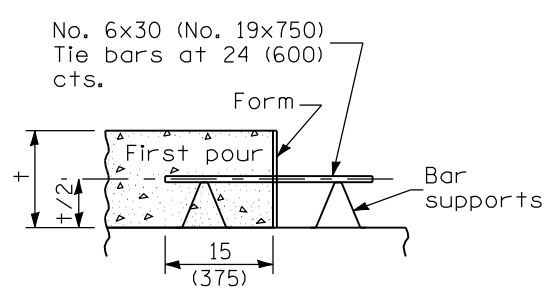


**LONGITUDINAL KEYED JOINT**

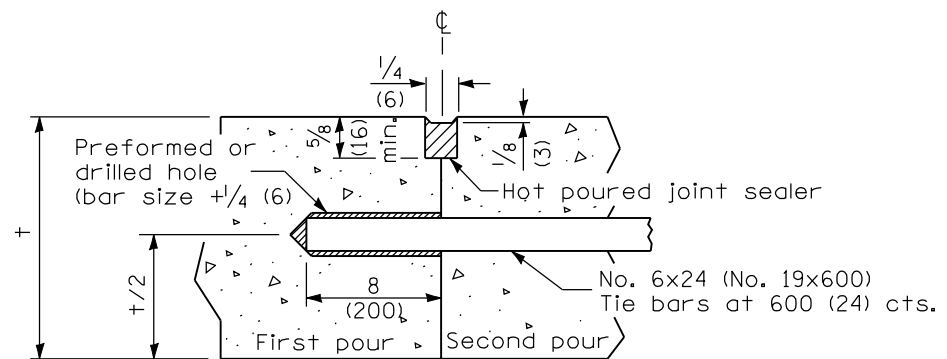


**SUPPORTING CHAIR ALTERNATE**

**SUPPORTING CHAIR ALTERNATE**



**LONGITUDINAL CONSTRUCTION JOINT (TIE BAR FORMED IN PLACE)**



**LONGITUDINAL CONSTRUCTION JOINT (TIE BAR GROUTED IN PLACE)**

**GENERAL NOTES**

All slope ratios are expressed as units of vertical displacement to units of horizontal displacement (V:H).

All dimensions are in inches (millimeters) unless otherwise shown.

Illinois Department of Transportation

PASSED January 1, 2008  
*Scott Smith*  
 ENGINEER OF POLICY AND PROCEDURES

APPROVED January 1, 2008  
*Ken E. Han*  
 ENGINEER OF DESIGN AND ENVIRONMENT

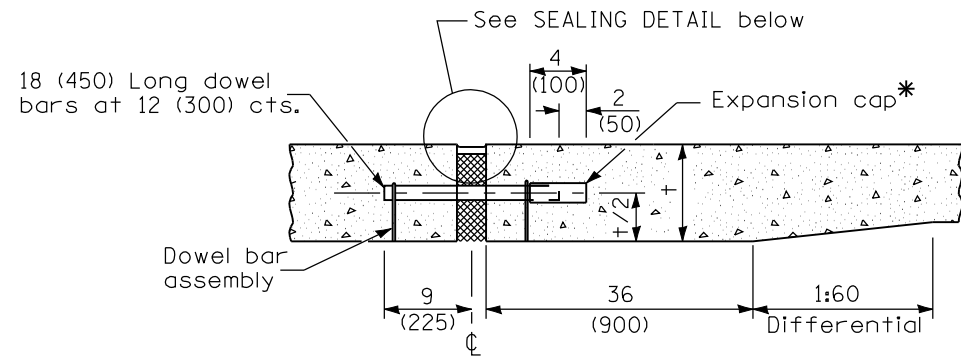
ISSUED 1-1-97

| DATE   | REVISIONS  |
|--------|--|
| 1-1-08 | Switched units to English (metric).                                      |
| 8-1-05 | Added supports to long. constr. jt. and revised note for trans. exp. jt. |

**PAVEMENT JOINTS**

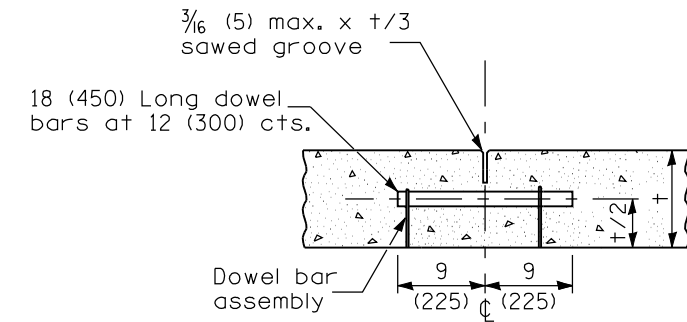
(Sheet 1 of 2)

**STANDARD 420001-07**

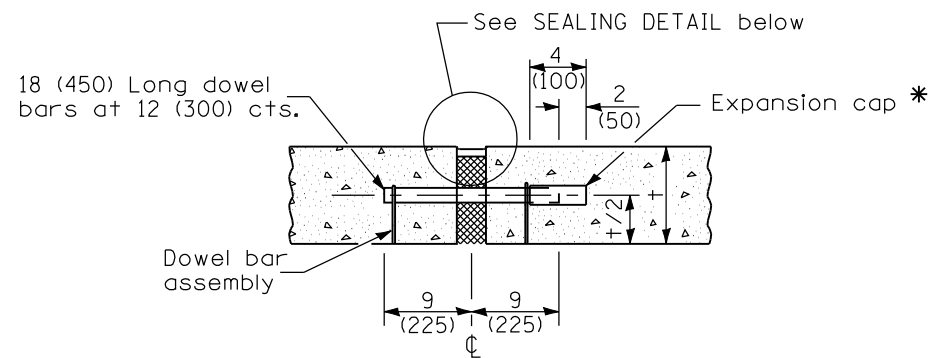


**TRANSVERSE EXPANSION JOINT**  
(FOR PAVEMENTS WITH UNEQUAL THICKNESS)

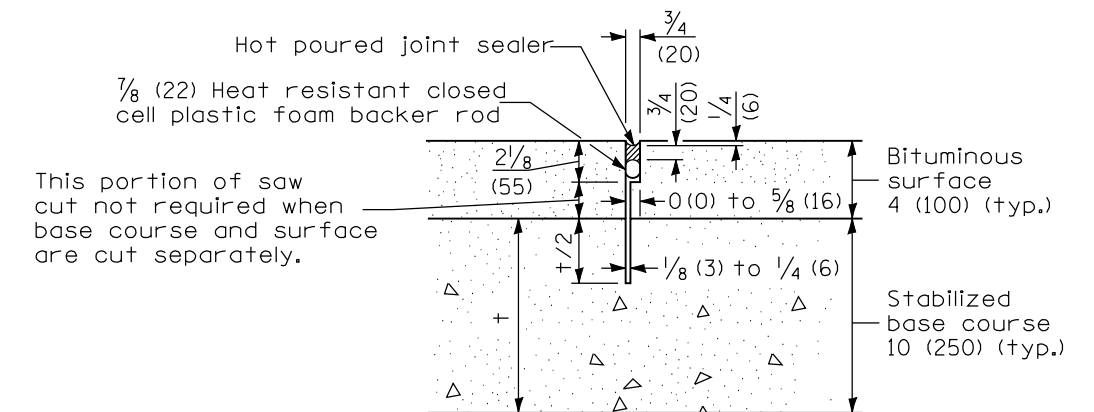
\* Expansion caps shall be installed on the exposed end of each dowel bar once the header has been removed and the joint filler material has been installed.



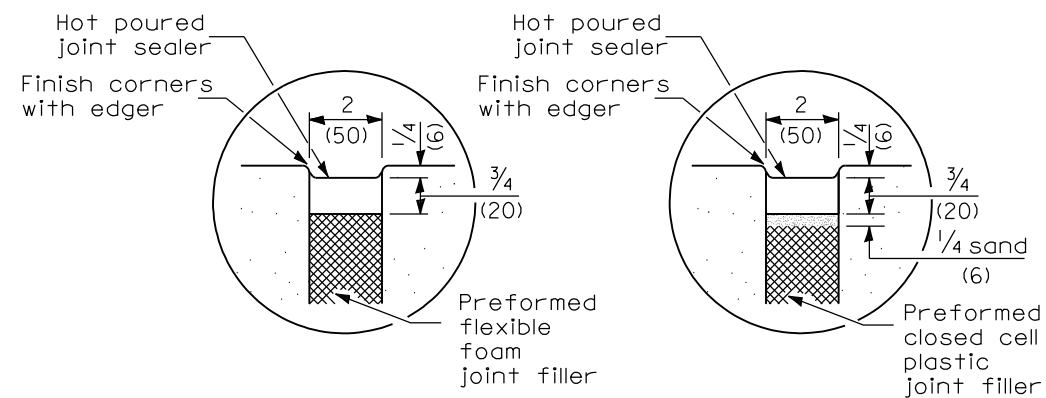
**TRANSVERSE CONTRACTION JOINT**



**TRANSVERSE EXPANSION JOINT**  
(FOR PAVEMENTS WITH EQUAL THICKNESS)



**TRANSVERSE CONTRACTION JOINT**  
(FOR CAM, CFA AND LFA BASE COURSE MIXTURES)



**SEALING DETAIL**

| DOWEL BAR TABLE         |                    |
|-------------------------|--------------------|
| PAVEMENT THICKNESS      | DOWEL BAR DIAMETER |
| 8 (200) or greater      | 1/2 (38)           |
| 7 (175) thru 7.99 (199) | 1/4 (32)           |
| Less than 7 (175)       | 1 (25)             |