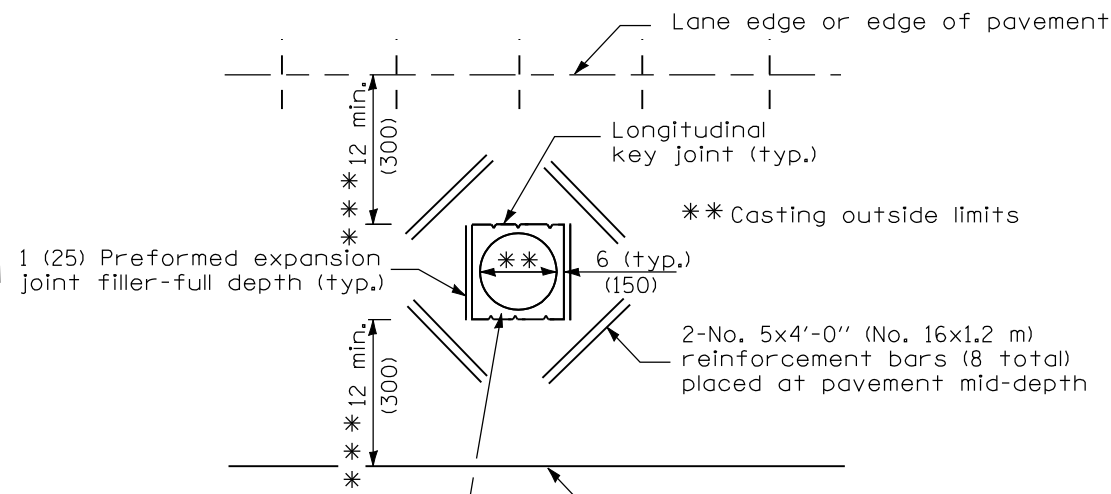


SECTION A-A

(TYPICAL 3-LANE, 1-WAY WITH SHOULDERS)

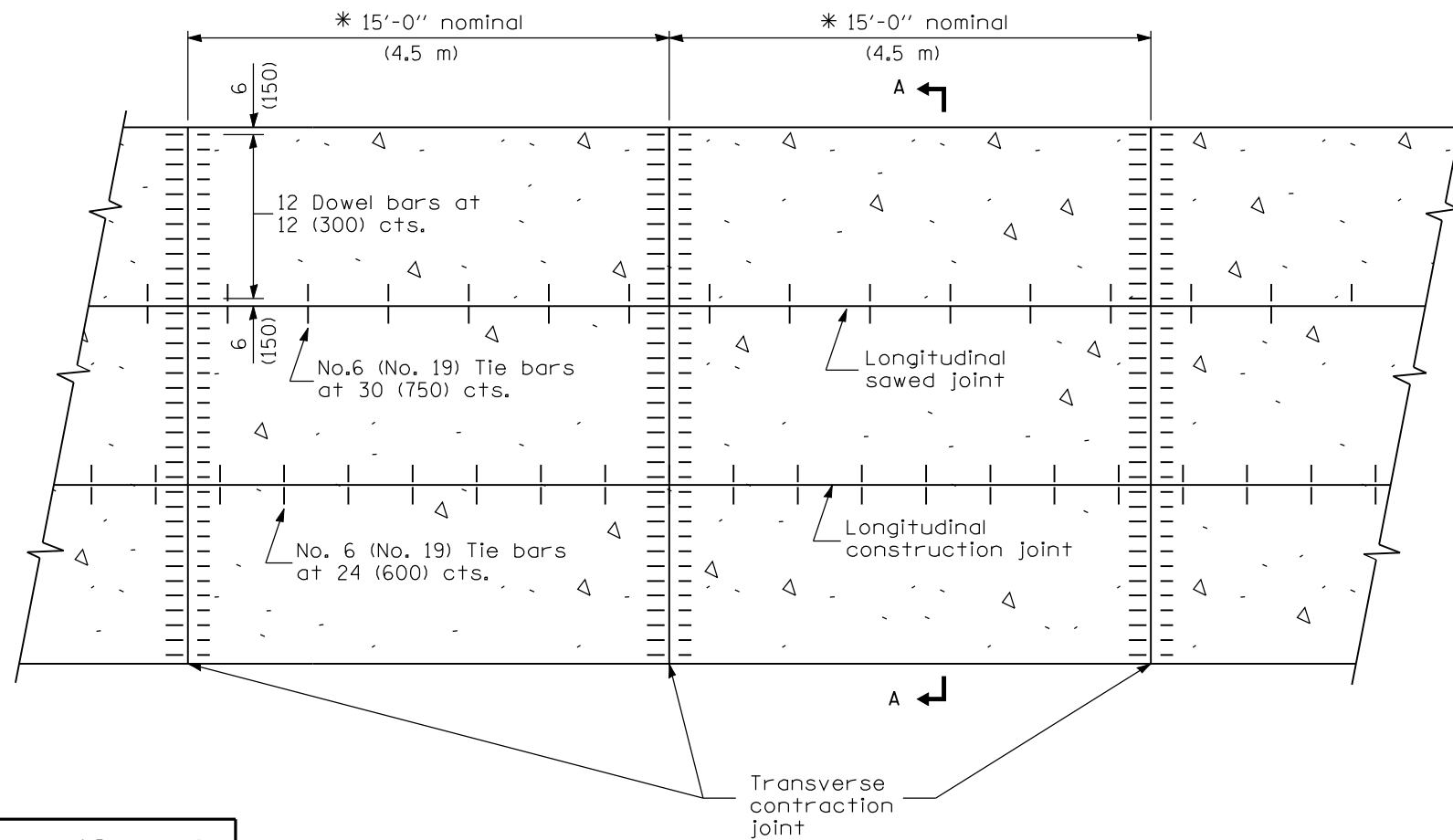
* The 15' (4.5 m) dimension shall be adjusted to 12' (3.6 m) min. to 18' (5.5 m) max. when placed adjacent to existing pcc pavement structure so that the joints are in prolongation.



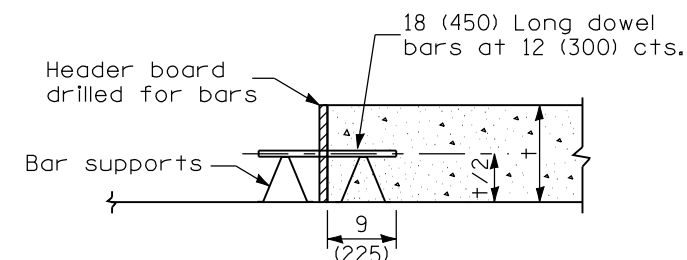
Place casting to grade and fill with full depth concrete after pavement has cured.

*** When the 12 (300) minimum cannot be achieved, the transverse joints shall be extended to either the longitudinal joint or edge of pavement.

DETAIL OF ADDED REINFORCEMENT FOR PAVEMENT BLOCK-OUTS



PLAN



TRANSVERSE CONSTRUCTION JOINT

GENERAL NOTES

See Standard 420001 for details of joints not shown.

All dimensions are in inches (millimeters) unless otherwise shown.

Illinois Department of Transportation
 PASSED January 1, 2008
 ENGINEER OF POLICY AND PROCEDURES
 APPROVED January 1, 2008
 ENGINEER OF DESIGN AND ENVIRONMENT

DATE	REVISIONS
1-1-08	Switched units to English (metric).
8-1-05	Added "Stabilized" to subbase and bar supports to constr. jt.

36' (10.8 m) JOINTED PCC PAVEMENT

STANDARD 420106-04