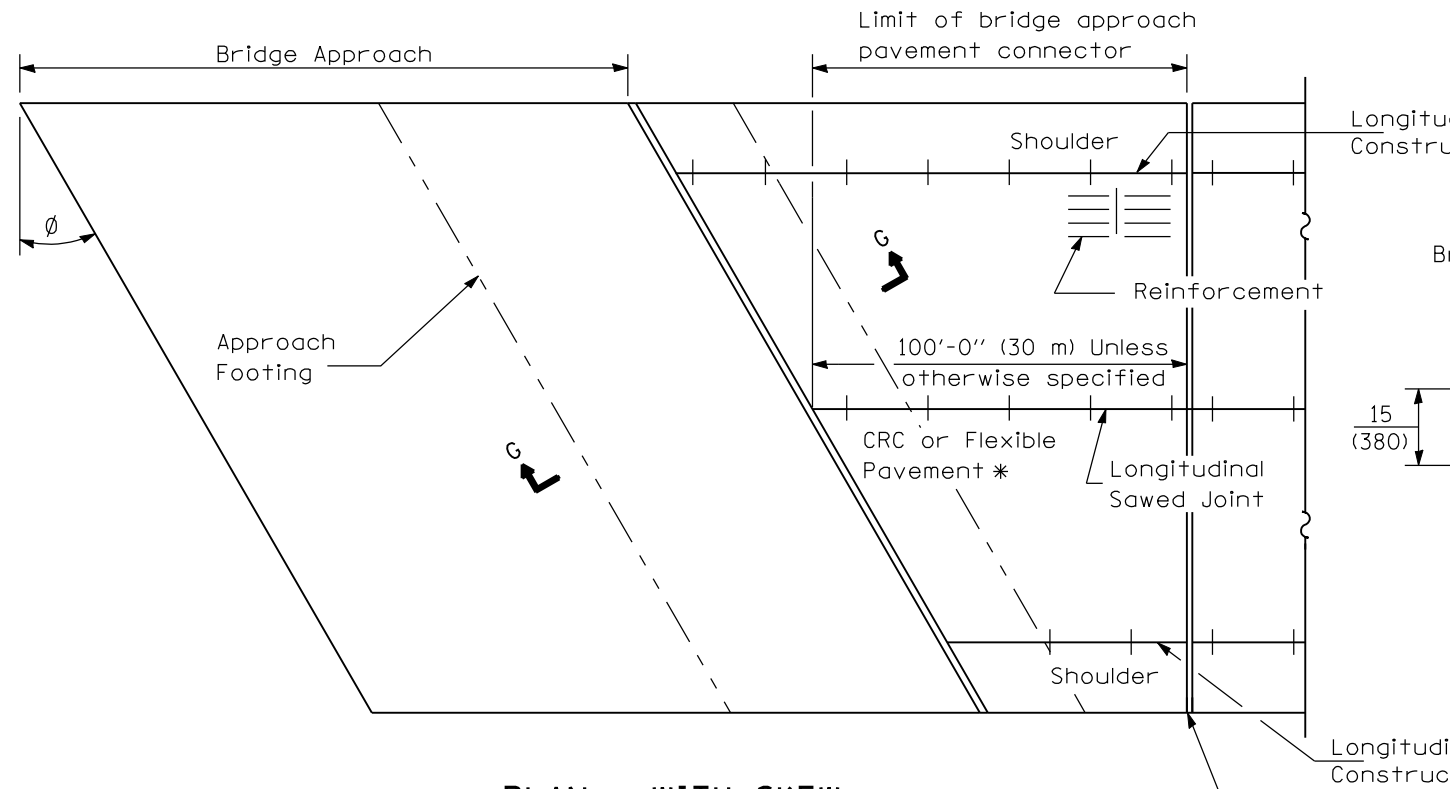
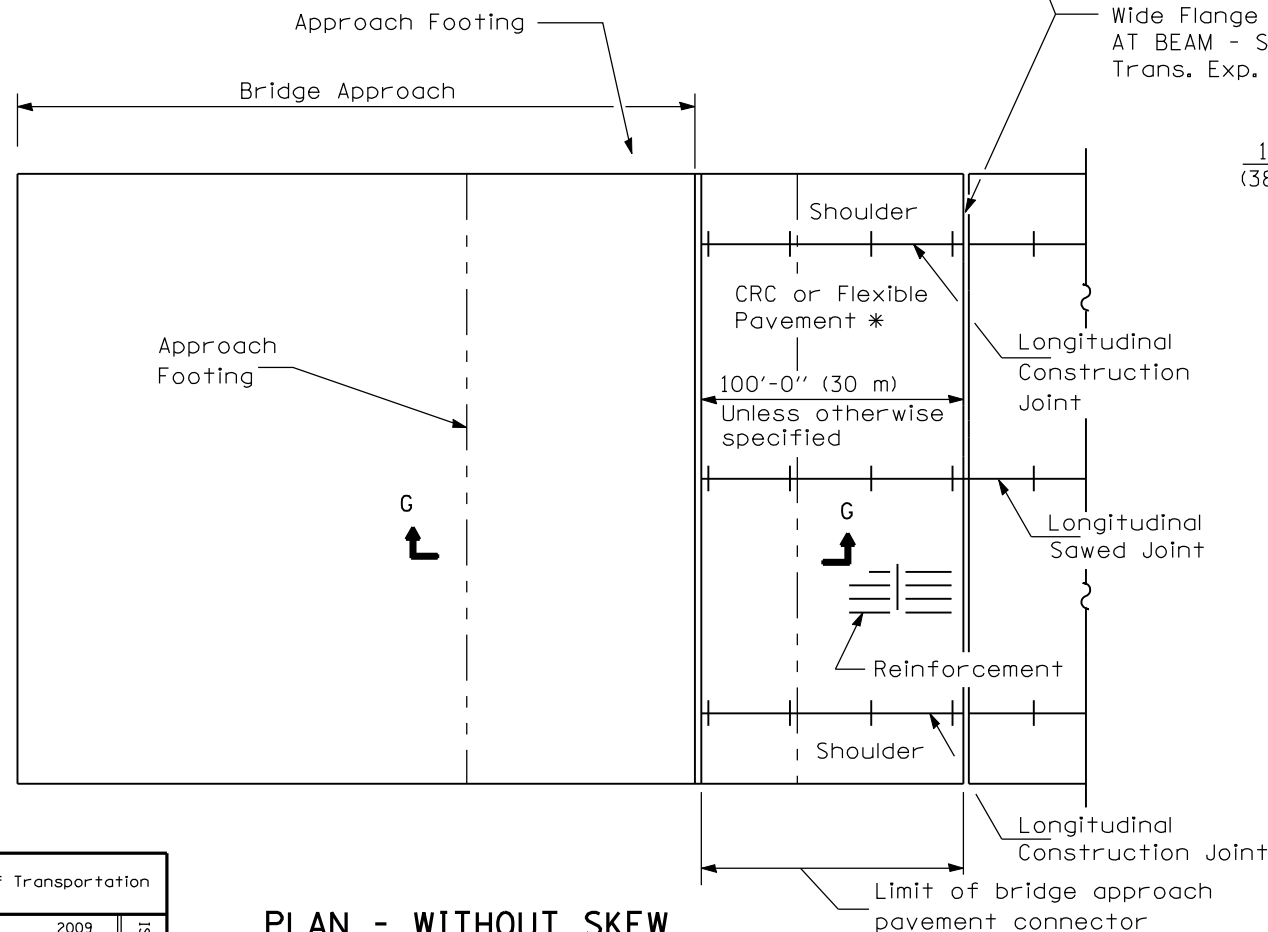


NEW CONSTRUCTION

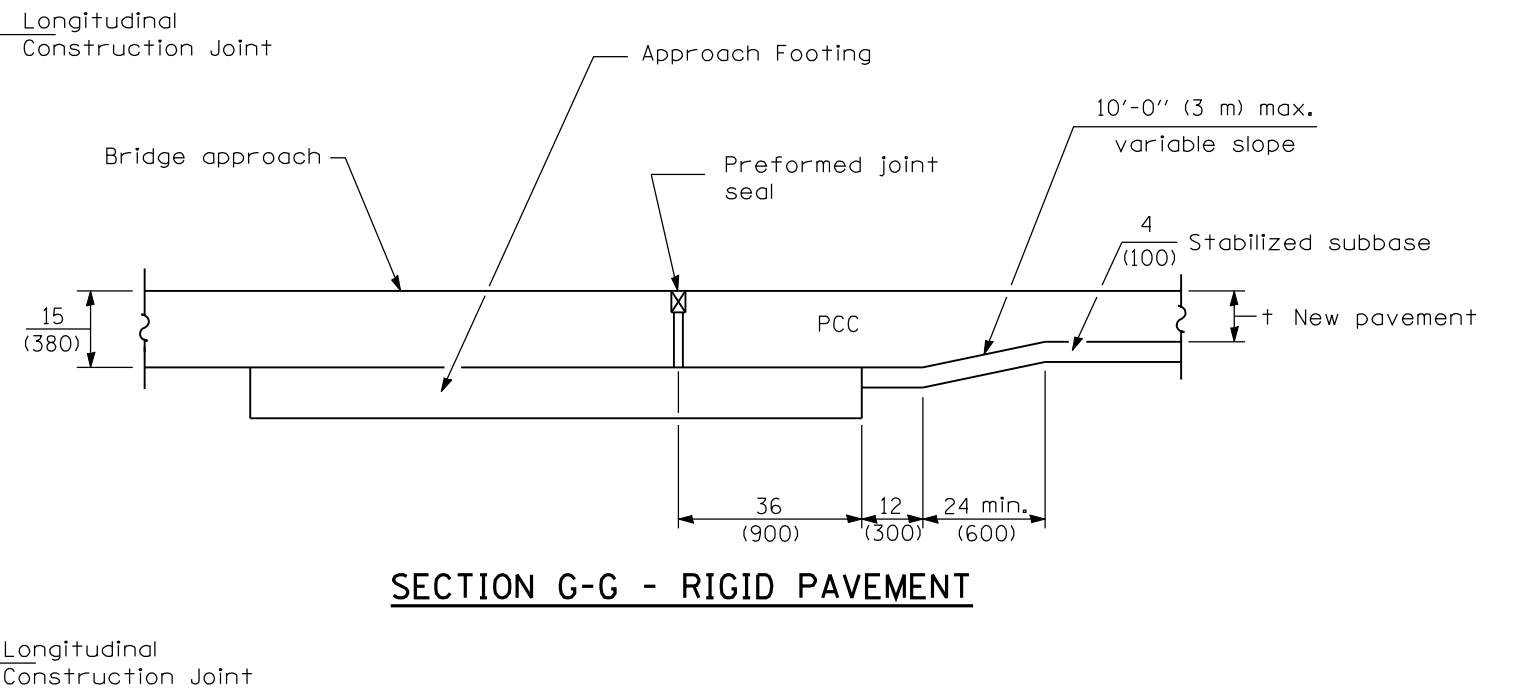


PLAN - WITH SKEW



PLAN - WITHOUT SKEW

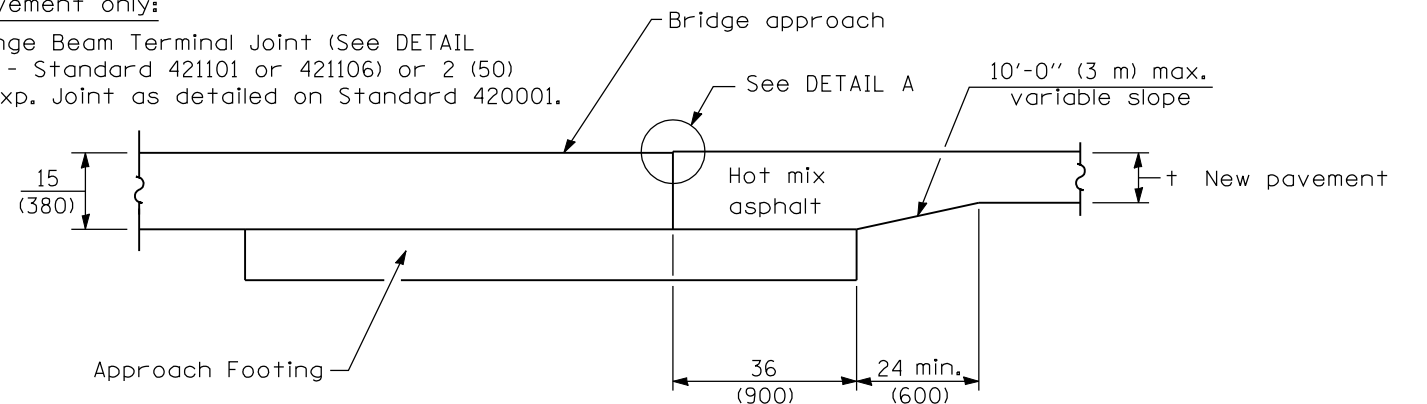
* Omit Reinforcement, tie bars and Long. sawed Jt. for Flexible Pavement.



SECTION G-G - RIGID PAVEMENT

Rigid Pavement only:

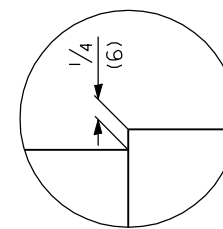
Wide Flange Beam Terminal Joint (See DETAIL AT BEAM - Standard 421101 or 421106) or 2 (50) Trans. Exp. Joint as detailed on Standard 420001.



SECTION G-G - FLEXIBLE PAVEMENT

GENERAL NOTES

- THICKNESS-"t"=Thickness of Pavement.
- See Standard 421001 for reinforcement details not shown.
- See Standard 420001 for joint details not shown.
- See plans for details of bridge approach, approach footing and preformed joint seal.
- All dimensions are in inches (millimeters) unless otherwise shown.



DETAIL A

DATE	REVISIONS
1-1-09	Completely revised std.
	Moved reinf. and details to base sheet.
1-1-08	Switched units to English (metric). Moved rebar epoxy coat note to Standard Spec.

BRIDGE APPROACH PAVEMENT CONNECTOR
(Sheet 1 of 2)

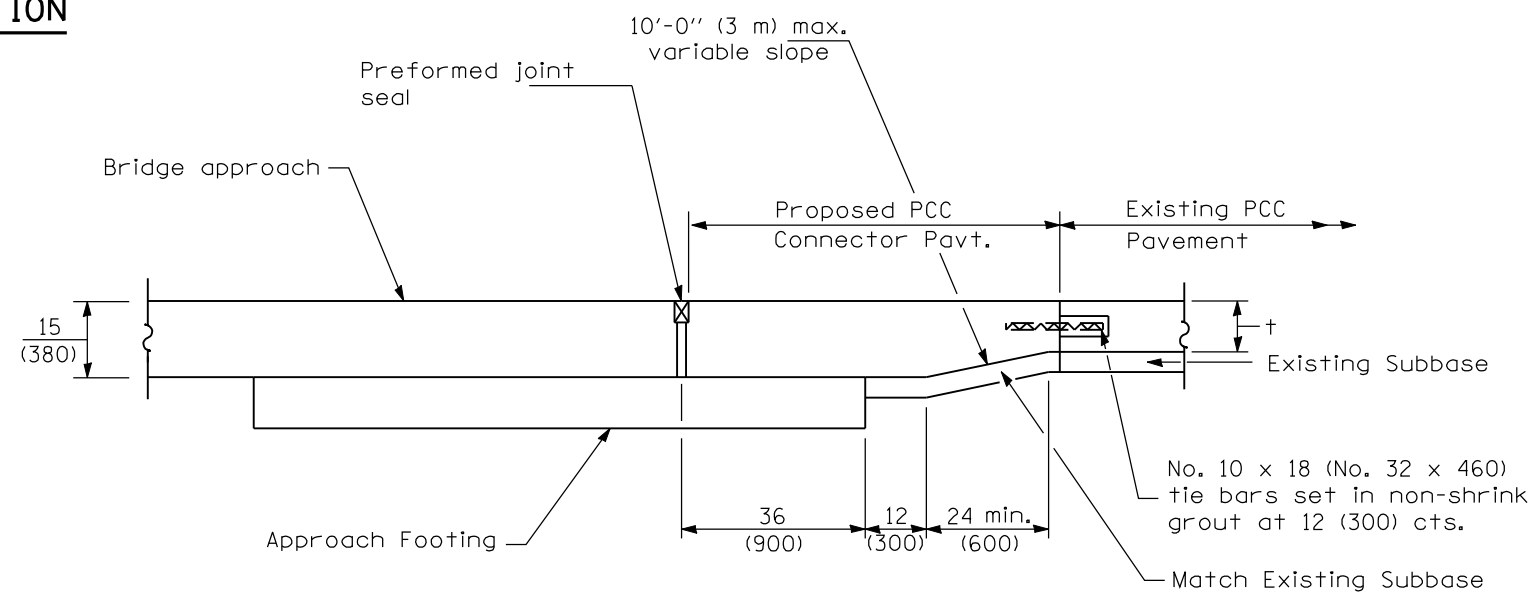
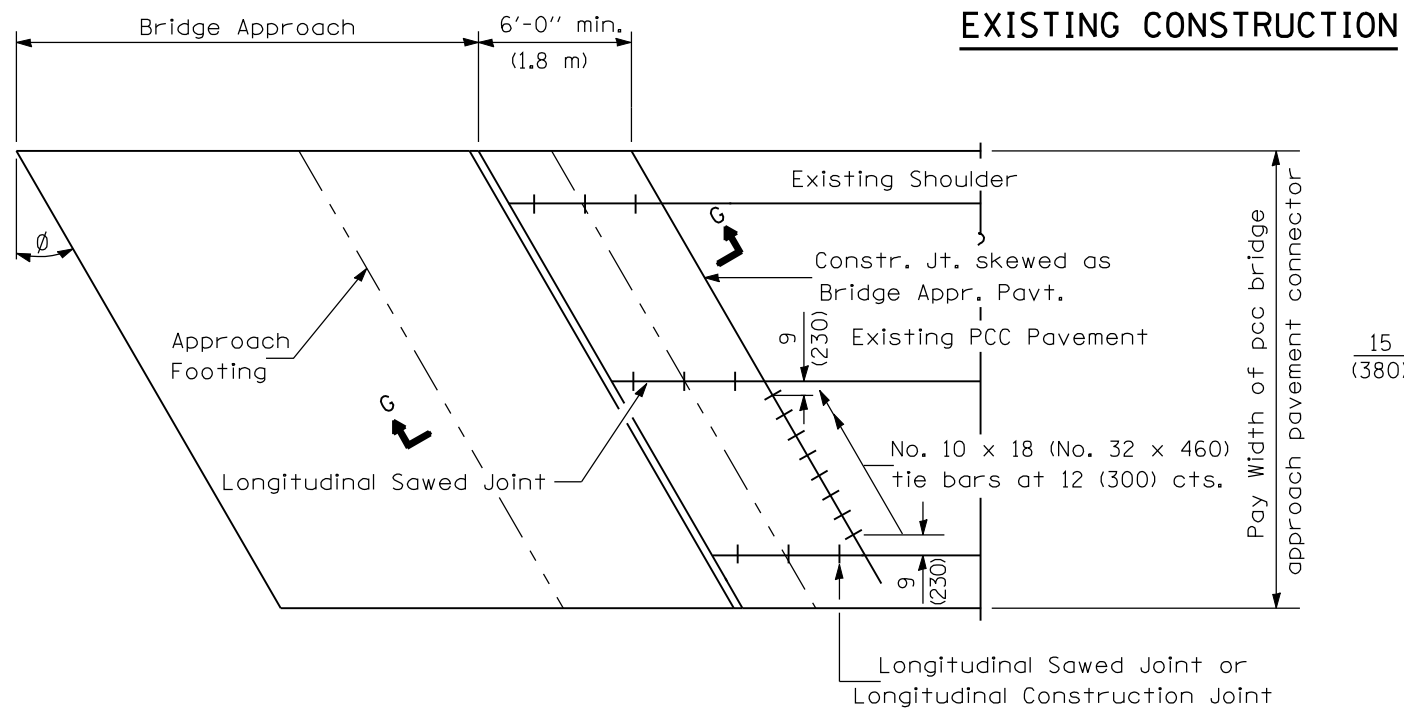
STANDARD 420401-07

Illinois Department of Transportation

APPROVED January 1, 2009
ENGINEER OF POLICY AND PROCEDURES

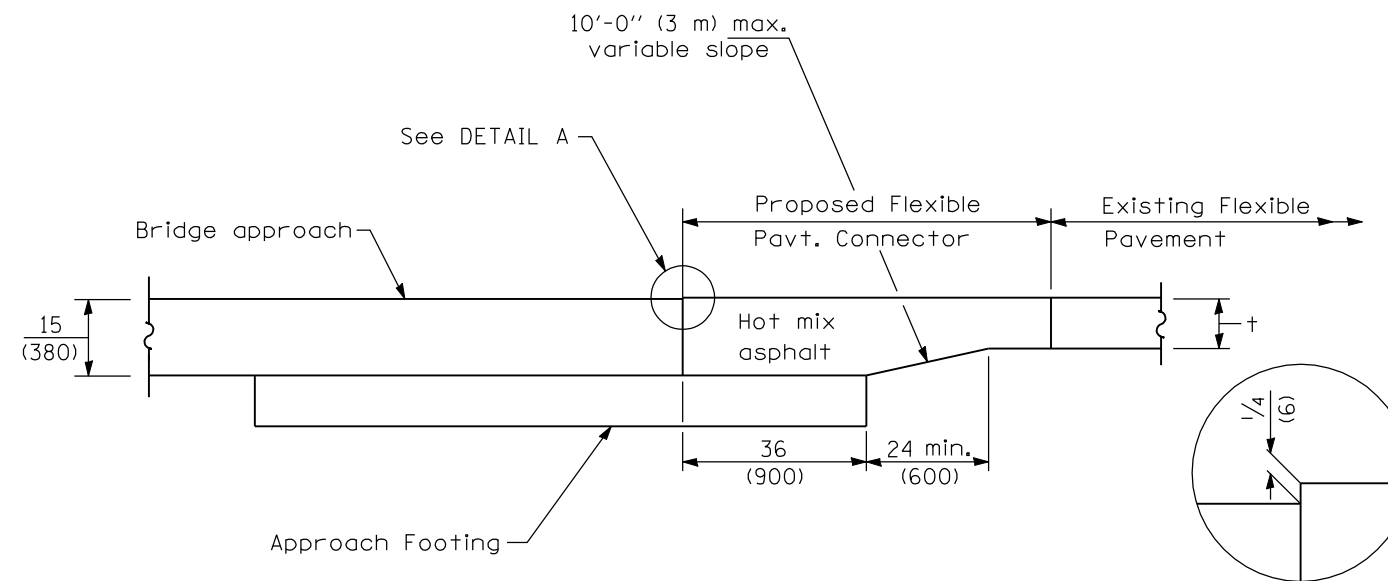
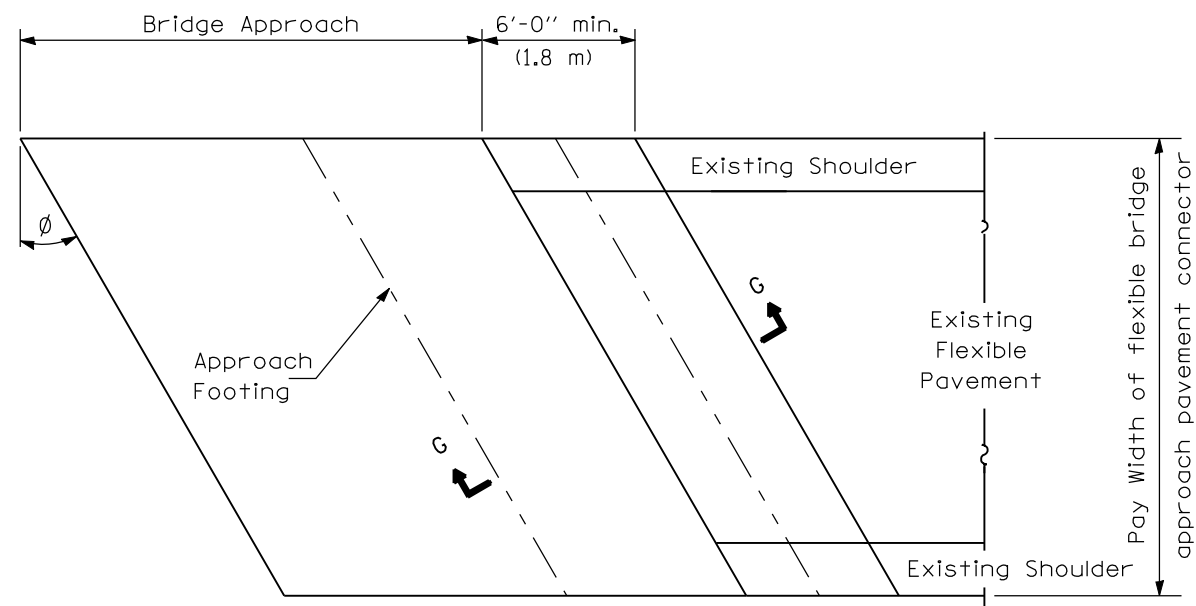
APPROVED January 1, 2009
ENGINEER OF DESIGN AND ENVIRONMENT

ISSUED 1-1-97



SECTION G-G - RIGID PAVEMENT

BRIDGE APPROACH PAVEMENT CONNECTOR (PCC)



SECTION G-G - FLEXIBLE PAVEMENT

DETAIL A

BRIDGE APPROACH PAVEMENT CONNECTOR (FLEXIBLE)

Illinois Department of Transportation

APPROVED January 1, 2009
Scott S. ...
 ENGINEER OF POLICY AND PROCEDURES

APPROVED January 1, 2009
Ken E. ...
 ENGINEER OF DESIGN AND ENVIRONMENT

ISSUED 1-1-97

BRIDGE APPROACH PAVEMENT CONNECTOR

(Sheet 2 of 2)

STANDARD 420401-07