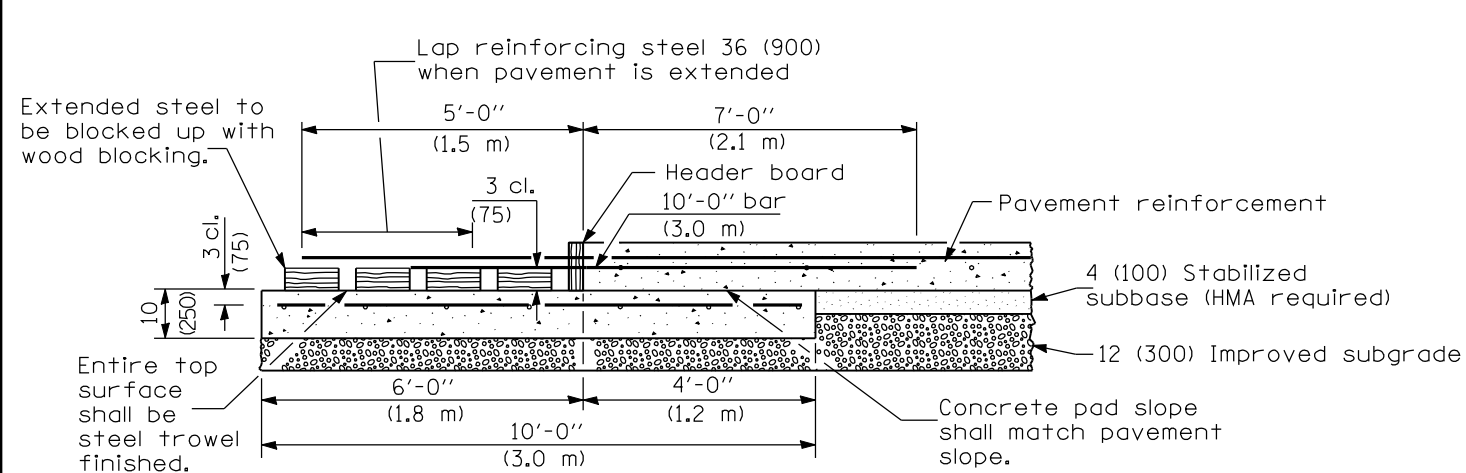
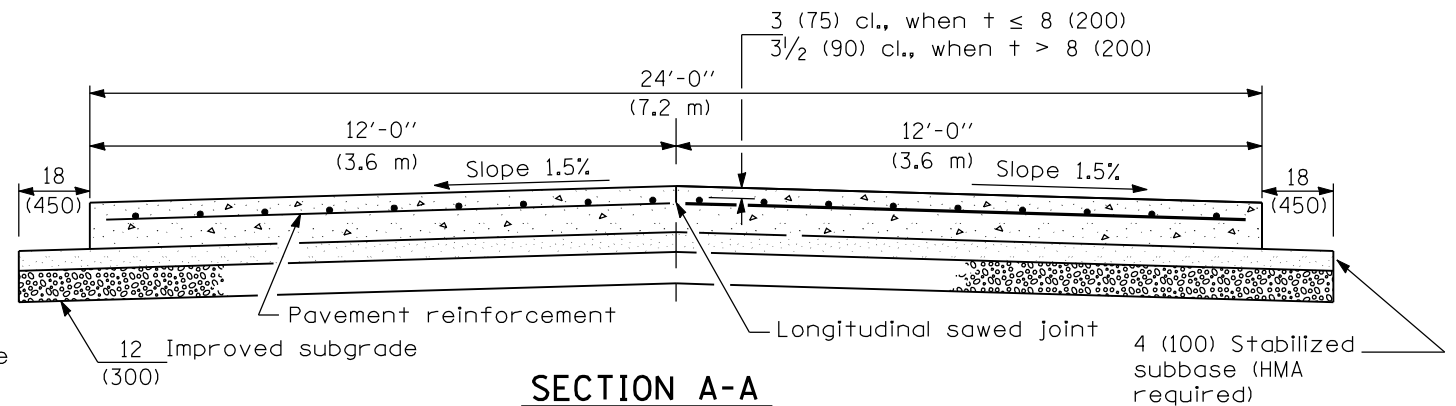


**PLAN**



**TRANSVERSE TERMINAL JOINT  
SECTION B-B**



**SECTION A-A  
(TYPICAL 2-LANE WITH SHOULDERS)**

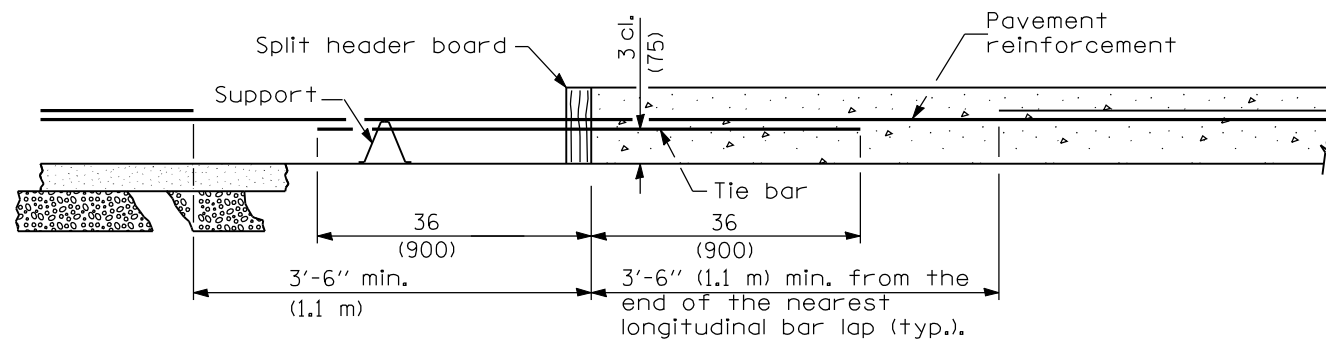
**GENERAL NOTES**

Sealant components for the wide flange beam terminal joint shall be as follows: The sealant shall be Dow Corning 888 Silicone Highway Joint Sealant. The tape shall be Polyethylene Tape No. 40. The primer, used on the metal only, shall be Dow Corning 1200. At the Contractor's option the joint may be sealed as shown in the optional groove detail.

See Standards 420001 and 420401 for joint details not shown.

See Standard 421001 for details of pavement reinforcement.

All dimensions are in inches (millimeters) unless otherwise shown.



**TRANSVERSE CONSTRUCTION JOINT**

DATE	REVISIONS
1-1-08	Switched units to English (metric).
1-1-07	Switched to Hot-Mix Asphalt (HMA) terminology.

**24' (7.2 m)  
CRC PAVEMENT**  
(WITH WIDE FLANGE BEAM TERMINAL JOINT)  
(Sheet 1 of 2)

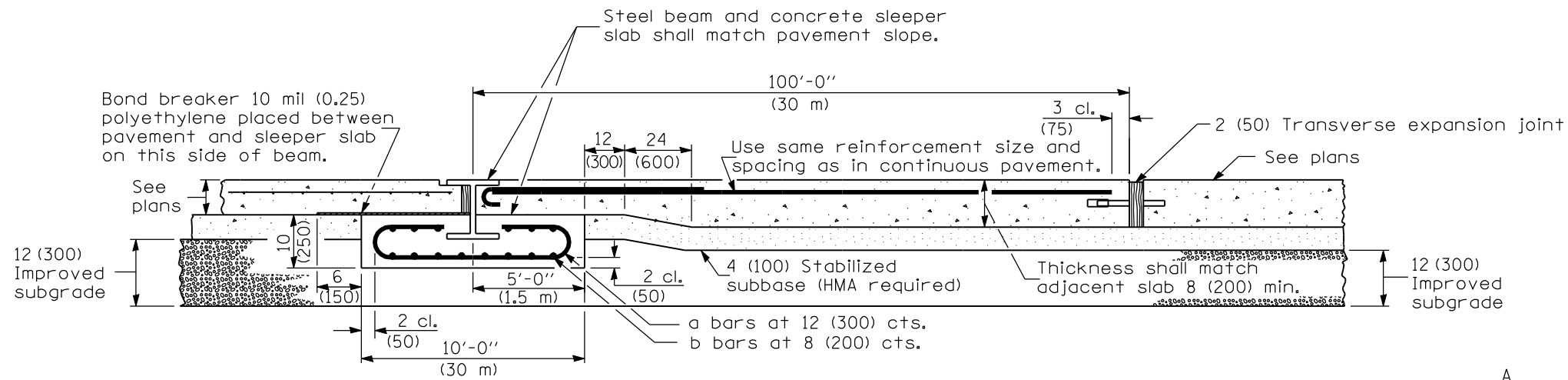
**STANDARD 421101-07**

Illinois Department of Transportation

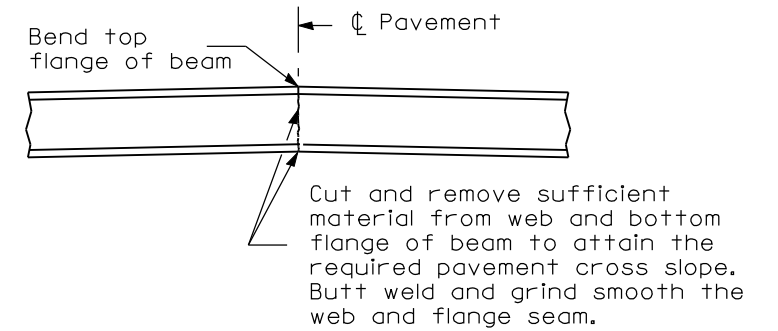
PASSED January 1, 2008  
*Scott Smith*  
 ENGINEER OF POLICY AND PROCEDURES

APPROVED January 1, 2008  
*Ken E. Han*  
 ENGINEER OF DESIGN AND ENVIRONMENT

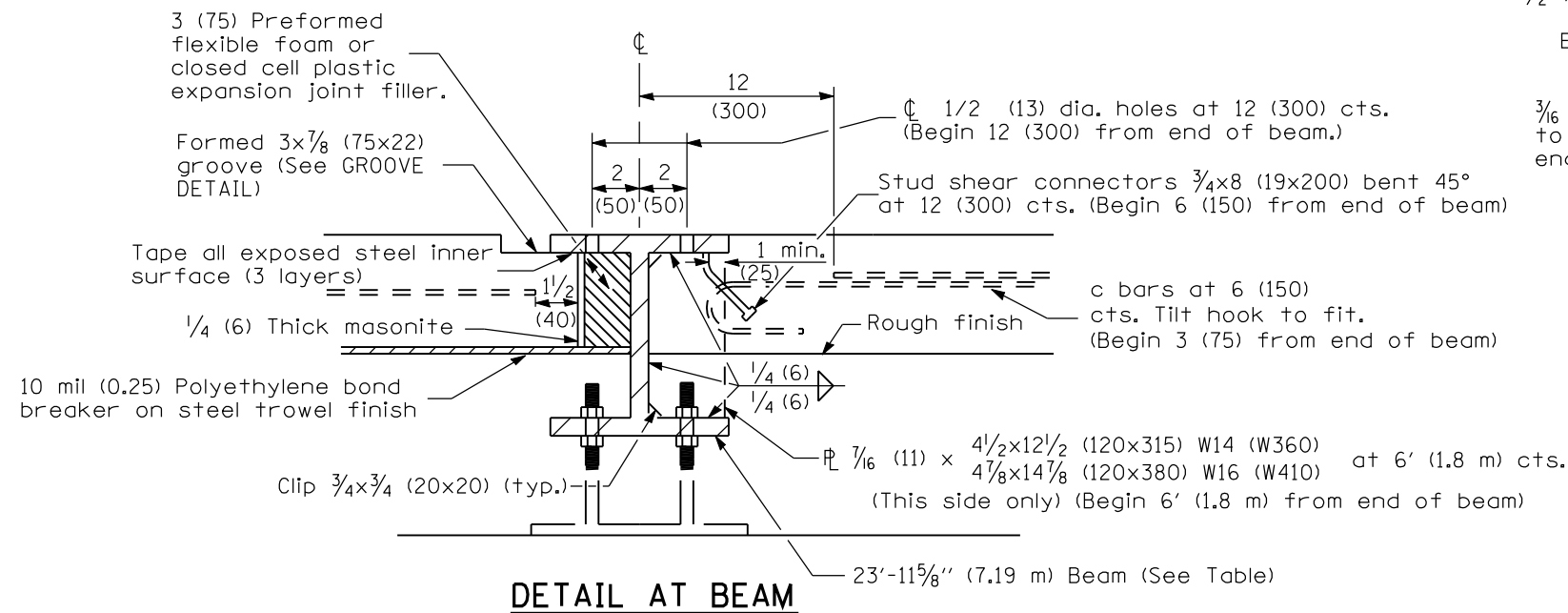
ISSUED 1-1-97



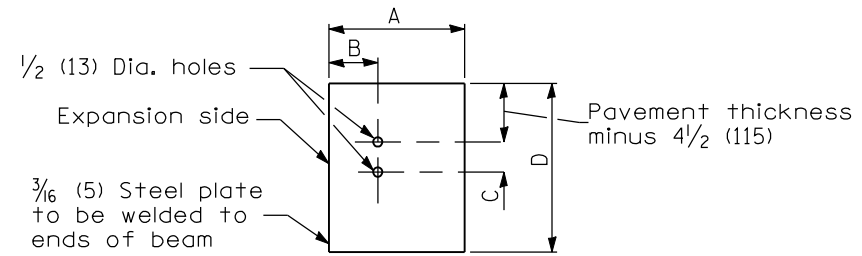
**WIDE FLANGE BEAM TERMINAL JOINT**



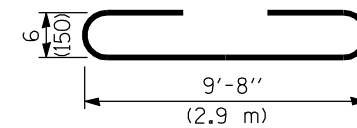
**DETAIL OF CUTTING AND WELDING BEAM**



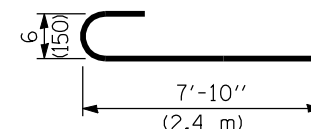
**DETAIL AT BEAM**



**END PLATE**



**BAR a**



**BAR c**

PAVEMENT THICKNESS	< 10 (250)	≥ 10 (250)
BEAM SIZE	W14x82 (W360x122)	W16x100 (W410x149)
A	10 7/8 (255)	10 3/8 (265)
B	4 5/16 (110)	4 7/16 (115)
C	3 (75)	4 (100)
D	14 1/4 (360)	17 (430)

**MATERIALS REQUIRED FOR ONE TRANSVERSE TERMINAL JOINT COMPLETE**

Concrete, cu. yds. (m <sup>3</sup> )	7.4 (5.4)
Reinforcement bars, lbs. (kg)	348 (160)
Pavement reinforcement, sq. yds. (m <sup>2</sup> )	13.3 (10.8)

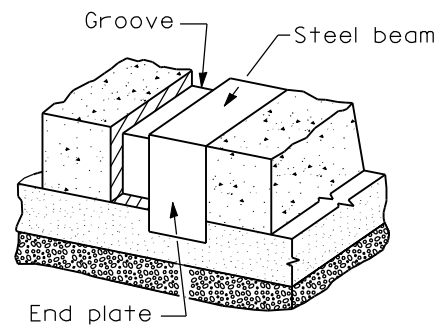
**MATERIALS REQUIRED FOR ONE WIDE FLANGE BEAM TERMINAL JOINT COMPLETE**

Bar	No.	Size	Length	Shape
a	24	No. 4 (No. 13)	19'-0" (5.8 m)	
b	29	No. 5 (No. 16)	23'-8" (7.1 m)	
c	48	No. 6 (No. 19)	8'-6" (2.6 m)	

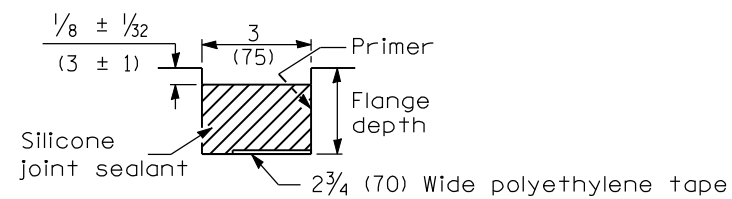
Concrete, cu. yds. (m <sup>3</sup> )	7.4 (5.4)
Reinforcement Bars, lbs. (kg)	1635 (740)
Structural Steel, lbs. (kg)	W14 (W360) 2025* (906*) W16 (W410) 2466* (1104*)

\*Weight includes beam, end plates, stiffener plates and studs.

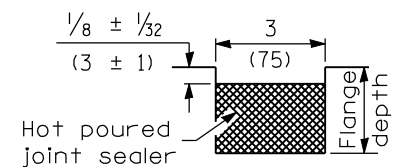
Pavement, sq. yds. (m <sup>2</sup> )	266.7 (216)
Pavement Reinforcement, sq. yds. (m <sup>2</sup> )	266.7 (216)
Stabilized Subbase, sq. yds. (m <sup>2</sup> )	285 (230.8)
Improved Subgrade, sq. yds. (m <sup>2</sup> )	300 (243)



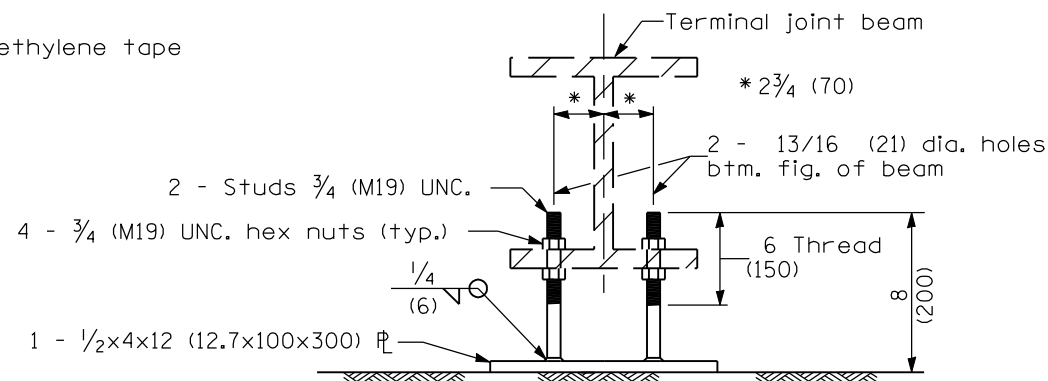
**VIEW OF GROOVE AT EDGE OF PAVEMENT**



**GROOVE DETAIL**



**GROOVE DETAIL (OPTIONAL)**



**OPTIONAL ADJUSTABLE CHAIR**

Illinois Department of Transportation

PASSED January 1, 2008

ENGINEER OF POLICY AND PROCEDURES

APPROVED January 1, 2008

ENGINEER OF DESIGN AND ENVIRONMENT

ISSUED 1-1-97

**24' (7.2 m)**

**CRC PAVEMENT**

(WITH WIDE FLANGE BEAM TERMINAL JOINT)

(Sheet 2 of 2)

**STANDARD 421101-07**