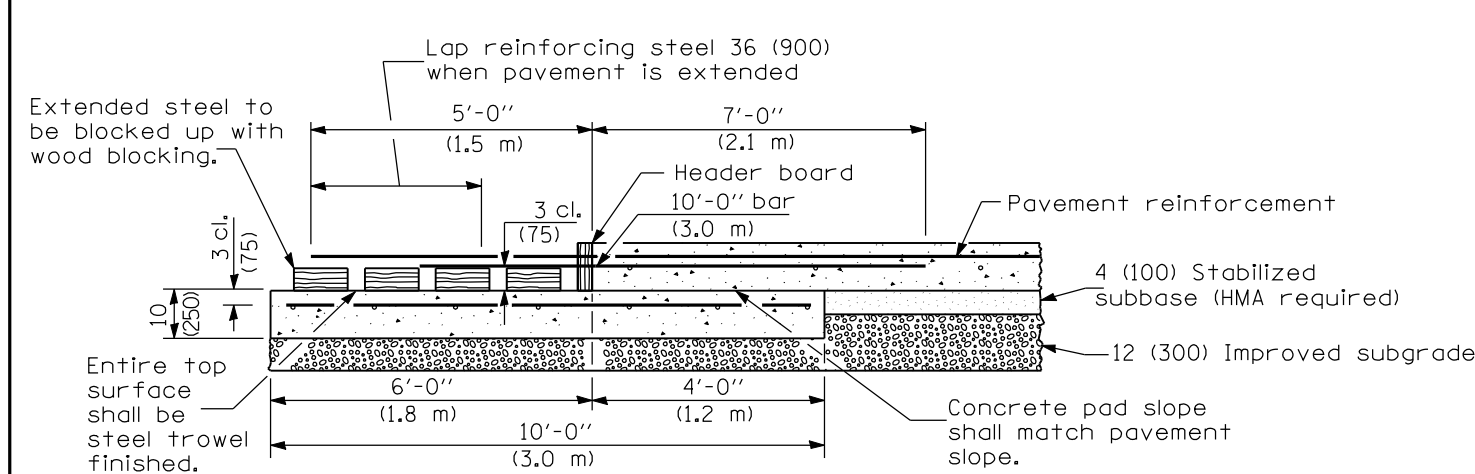
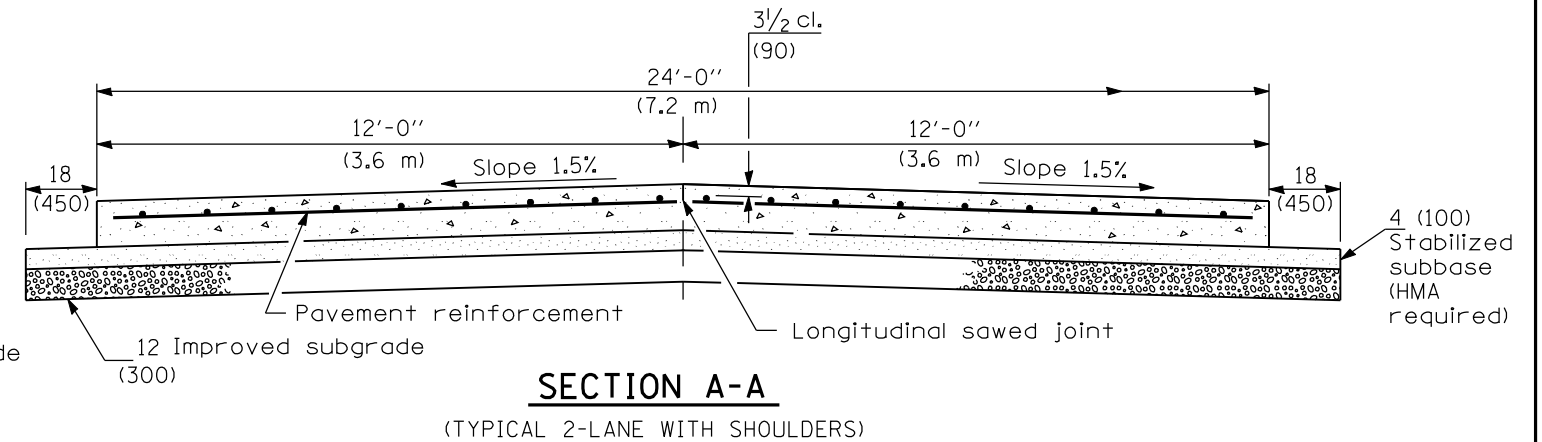


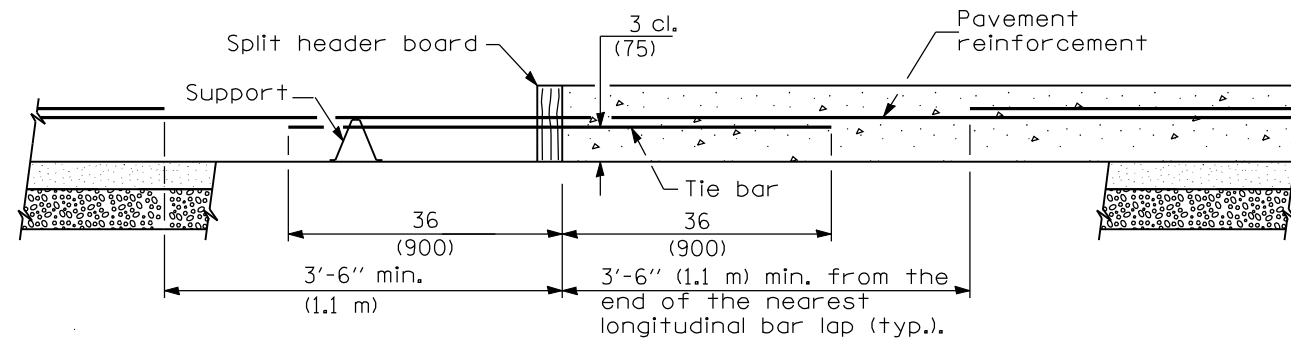
**PLAN**



**TRANSVERSE TERMINAL JOINT SECTION B-B**



**SECTION A-A (TYPICAL 2-LANE WITH SHOULDERS)**



**TRANSVERSE CONSTRUCTION JOINT**

**GENERAL NOTES**

See Standard 421001 for details of pavement reinforcement.

See Standards 420001 and 420401 for joint details not shown.

All dimensions are in inches (millimeters) unless otherwise shown.

DATE	REVISIONS
1-1-08	Switched units to English (metric). Revised Lug. Sys. Table.
1-1-07	Switched to Hot-Mix Asphalt (HMA) terminology.

**24' (7.2 m) CRC PAVEMENT (WITH LUG SYSTEM)**

(Sheet 1 of 2)

**STANDARD 421201-06**

Illinois Department of Transportation

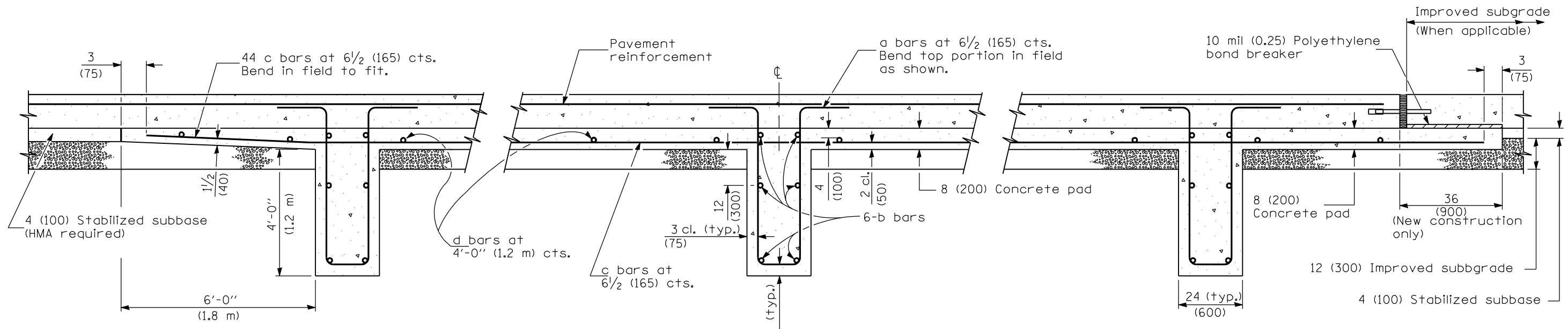
PASSED January 1, 2008

ENGINEER OF POLICY AND PROCEDURES

APPROVED January 1, 2008

ENGINEER OF DESIGN AND ENVIRONMENT

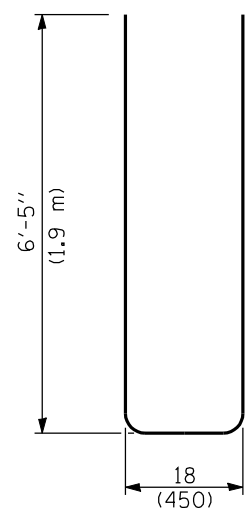
ISSUED 1-1-97



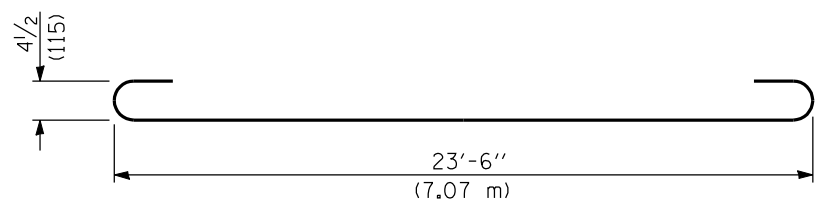
**SECTION AT LUG W**

**SECTION AT LUG X**

**SECTION AT LUG Y**



**BAR a**



**BAR b**

**MATERIALS REQUIRED FOR (1) ONE LUG SYSTEM**  
(Excluding Pavement Concrete and Pavement Reinforcement)

Bar	Qty.	Size	Length	Shape
a	132	No. 8 (No. 25)	14'-0" (4.25 m)	
b	18	No. 5 (No. 16)	24'-9" (7.43 m)	
c	132	No. 5 (No. 16)	20'-0" (6.10 m)	
d	28	No. 4 (No. 13)	11'-9" (3.52 m)	

Concrete, cu. yds. (m <sup>3</sup> )	64.0 (48.9)
Reinforcing Bars, lbs. (kg)	8372 (3800)
Concrete Pad, sq. yds. (m <sup>2</sup> )	144 (120)
Improved Subgrade, sq. yds. (m <sup>2</sup> )	162 (135)

Illinois Department of Transportation  
 PASSED January 1, 2008  
 ENGINEER OF POLICY AND PROCEDURES  
 APPROVED January 1, 2008  
 ENGINEER OF DESIGN AND ENVIRONMENT

**24' (7.2 m)**  
**CRC PAVEMENT**  
 (WITH LUG SYSTEM)  
 (Sheet 2 of 2)  
**STANDARD 421201-06**