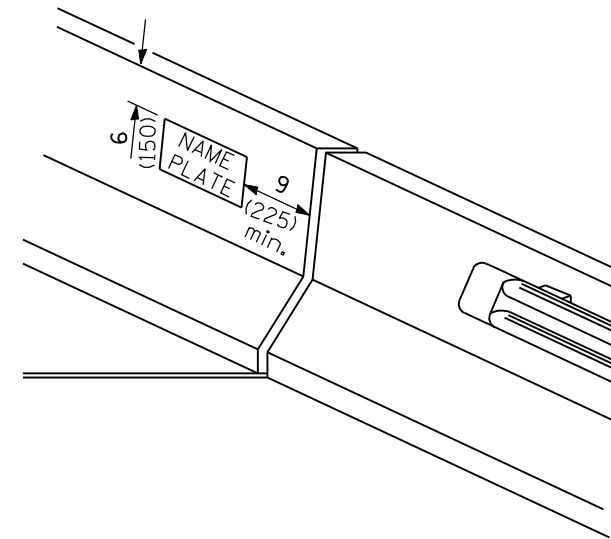
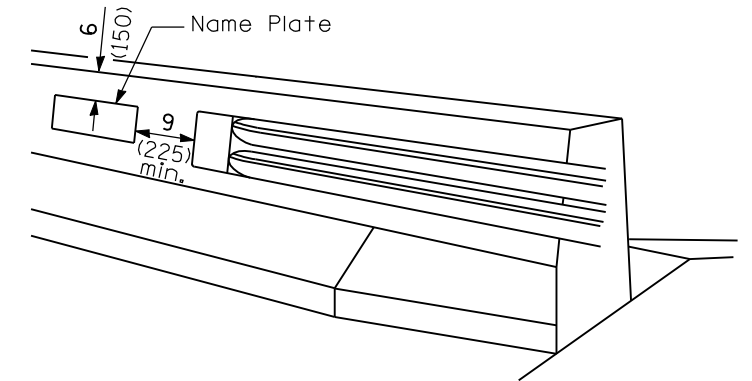


**FOR MULTI-SPAN CULVERTS**

(Unless otherwise noted on the plans, name plates are not required for structures less than 20' (6.1 m) in length)

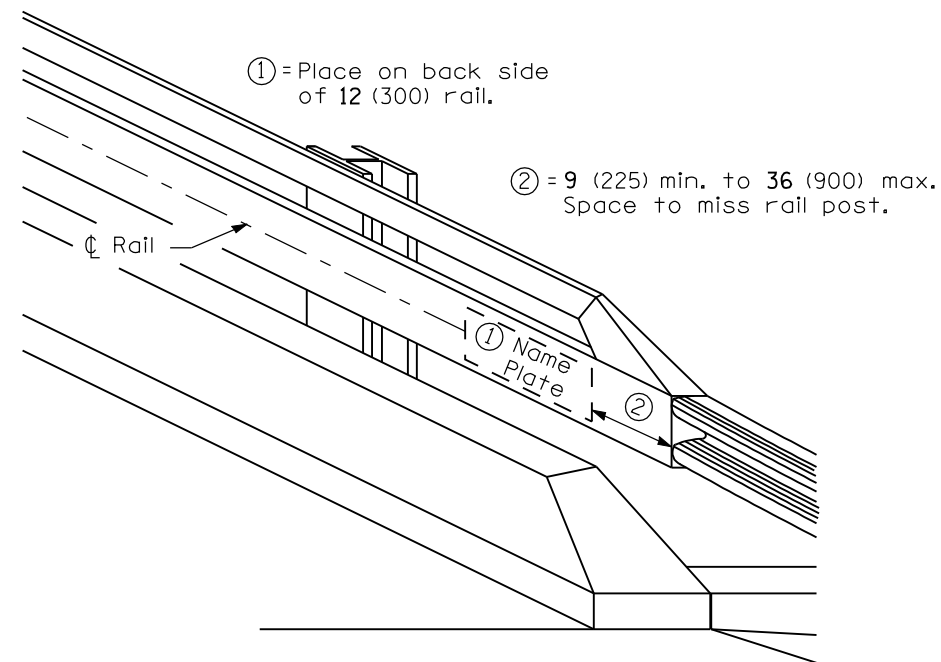


**FOR PARAPET AND END POST MOUNTED**

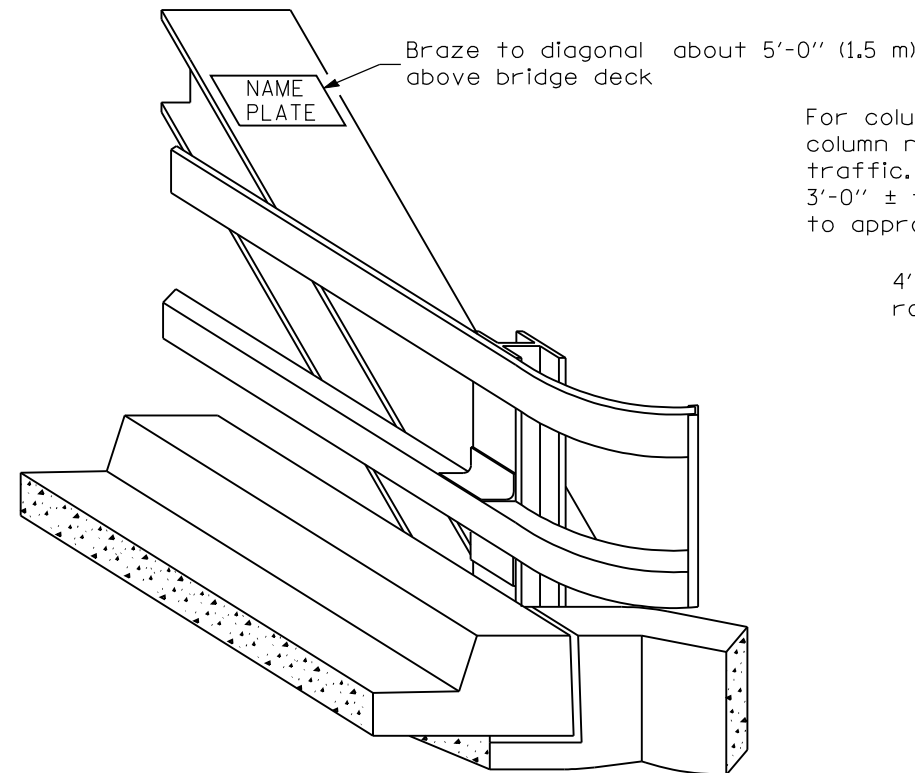


**FOR PARAPET**

(When Dog Ear Wing is used)



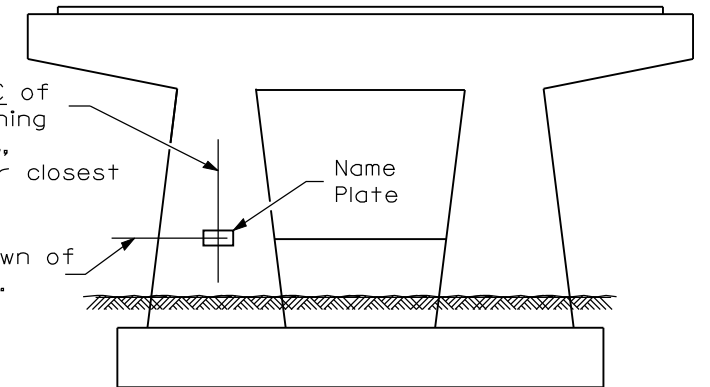
**FOR STEEL RAILS**



**FOR TRUSSES**

For column type piers,  $\phi$  of column nearest approaching traffic. For solid piers, 3'-0"  $\pm$  from end of pier closest to approaching traffic.

4'-0"  $\pm$  above crown of roadway elevation.



**FOR PIERS ON FAI ROUTES**

**GENERAL NOTES**

On one-way traffic structures, place name plate on right side of approach end. On two-way traffic structures, place name plate on right side of approach end while looking in the direction of increasing stationing.

All dimensions are in inches (millimeters) unless otherwise shown.

DATE	REVISIONS
1-1-09	Switched units to English (metric). Added pier detail.
1-1-02	Remove Placing; note on sht. 2. Added Braze to diag. note on sht. 1.

**NAME PLATE FOR BRIDGES**

(Sheet 1 of 2)

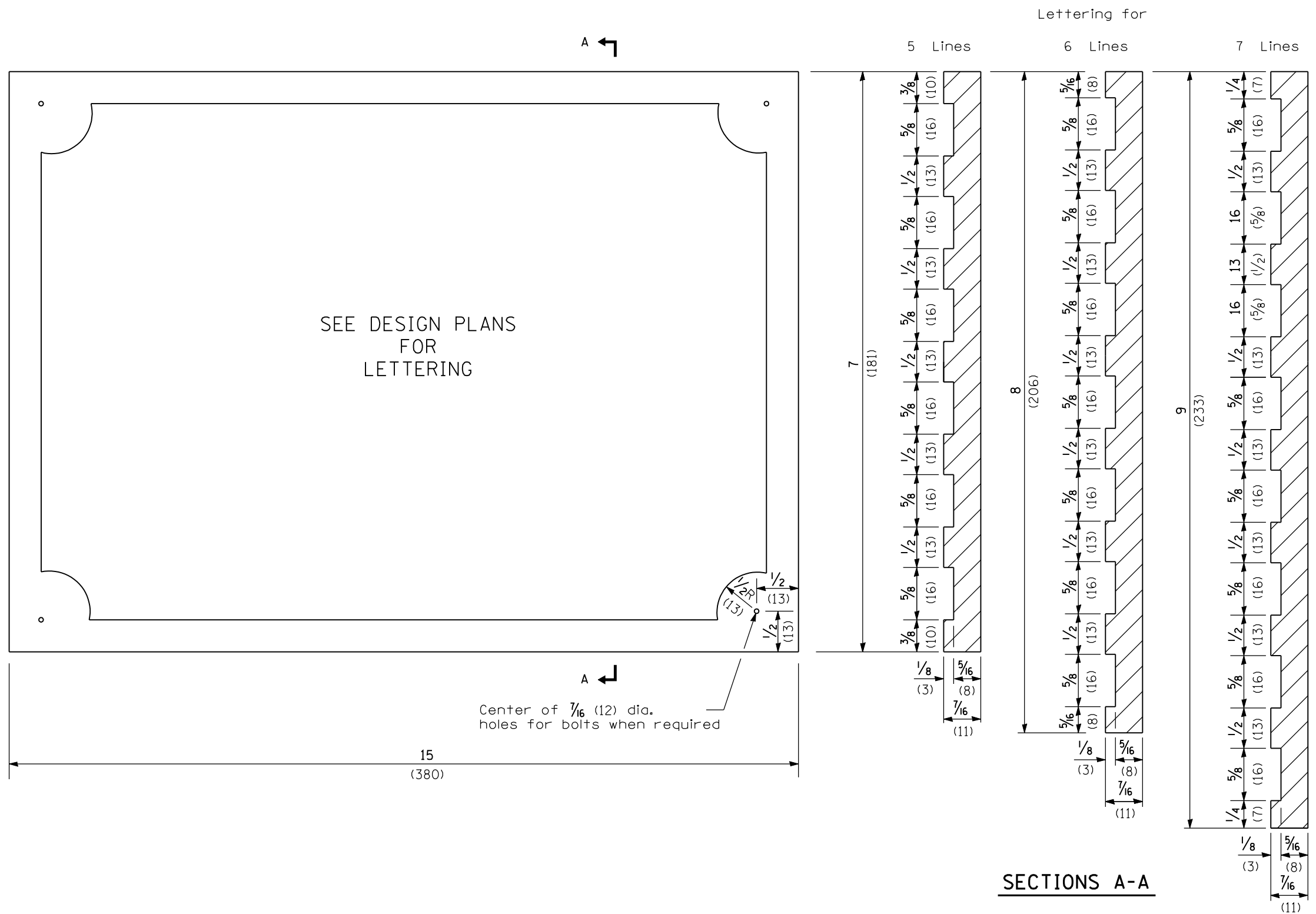
**STANDARD 515001-03**

Illinois Department of Transportation

APPROVED January 1, 2009  
*Ralph E. Anderson*  
 ENGINEER OF BRIDGES AND STRUCTURES

ISSUED 1-1-97

APPROVED January 1, 2009  
*Ken E. Ha...*  
 ENGINEER OF DESIGN AND ENVIRONMENT



NOTE

Border and lettering:  
 Raised  $\frac{1}{8}$  (3), square cut and not tapered.

Illinois Department of Transportation

APPROVED January 1, 2009  
*Ralph E. Anderson*  
 ENGINEER OF BRIDGES AND STRUCTURES

ISSUED 1-1-97

APPROVED January 1, 2009  
*Ken E. Han*  
 ENGINEER OF DESIGN AND ENVIRONMENT

NAME PLATE FOR BRIDGES

(Sheet 2 of 2)

**STANDARD 515001-03**