

**GENERAL NOTES**

Grating details shown are intended for use with particular sizes of precast reinforced concrete flared end sections as shown on standards 542301 and 542306.

Approximate quantity of steel shown includes total quantity of grating, bolts, nuts, washers and steel pipe.

Holes in the precast concrete flared end sections shall be cored to the diameters noted. If cone-out on the other end of the hole occurs, the hole shall be filled with grout to correct the diameter of the hole.

All dimensions are in inches (millimeters) unless otherwise shown.

DATE	REVISIONS
1-1-09	Changed top bolt loc. Switched units to English (metric).
1-1-97	Renum. Standard 2364-3 and Standard 2379-2.

**GRATING FOR CONCRETE FLARED END SECTION (FOR 24" (600 mm) THRU 54" (1350 mm) PIPE)**  
(Sheet 1 of 2)  
**STANDARD 542311-01**

Illinois Department of Transportation

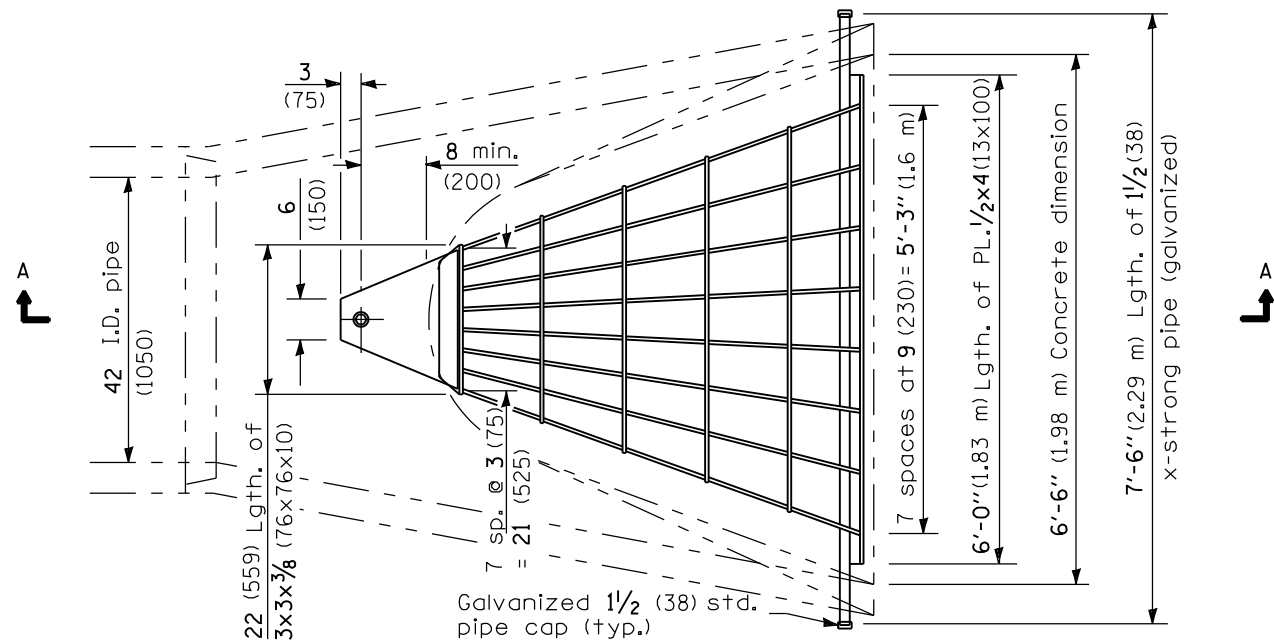
PASSED January 1, 2009

ENGINEER OF POLICY AND PROCEDURES

APPROVED January 1, 2009

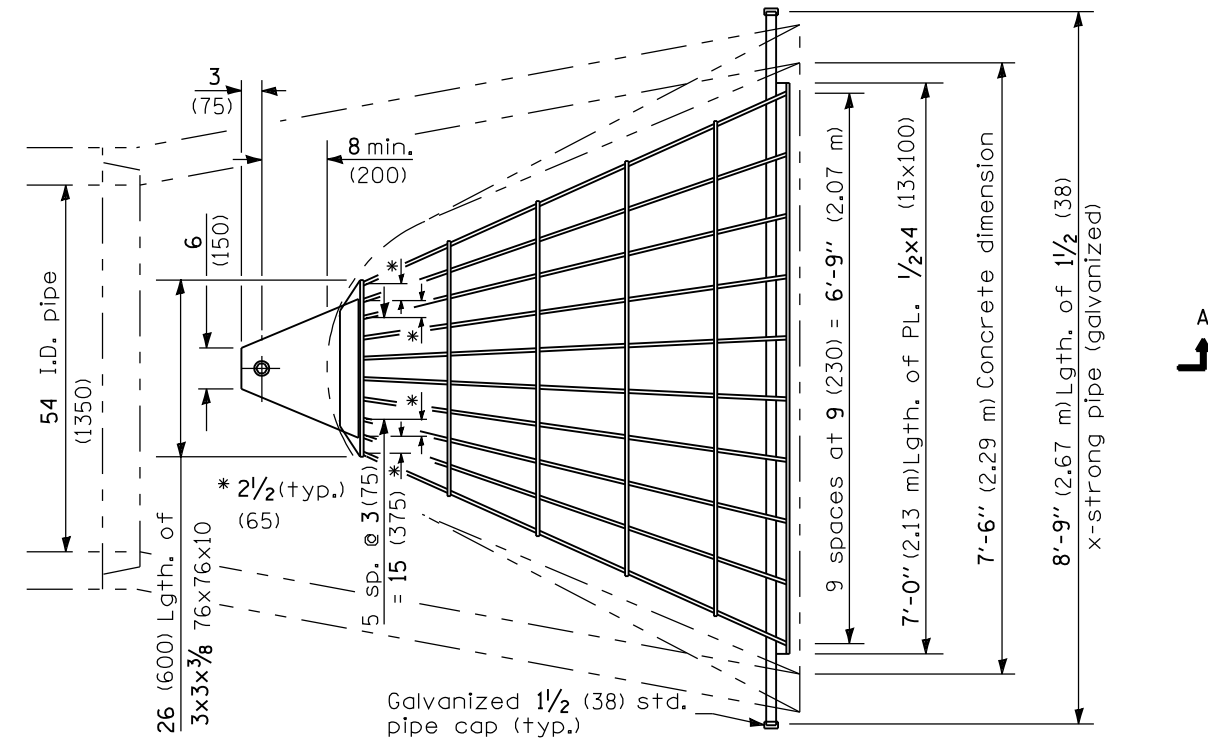
ENGINEER OF DESIGN AND ENVIRONMENT

ISSUED 1-1-1



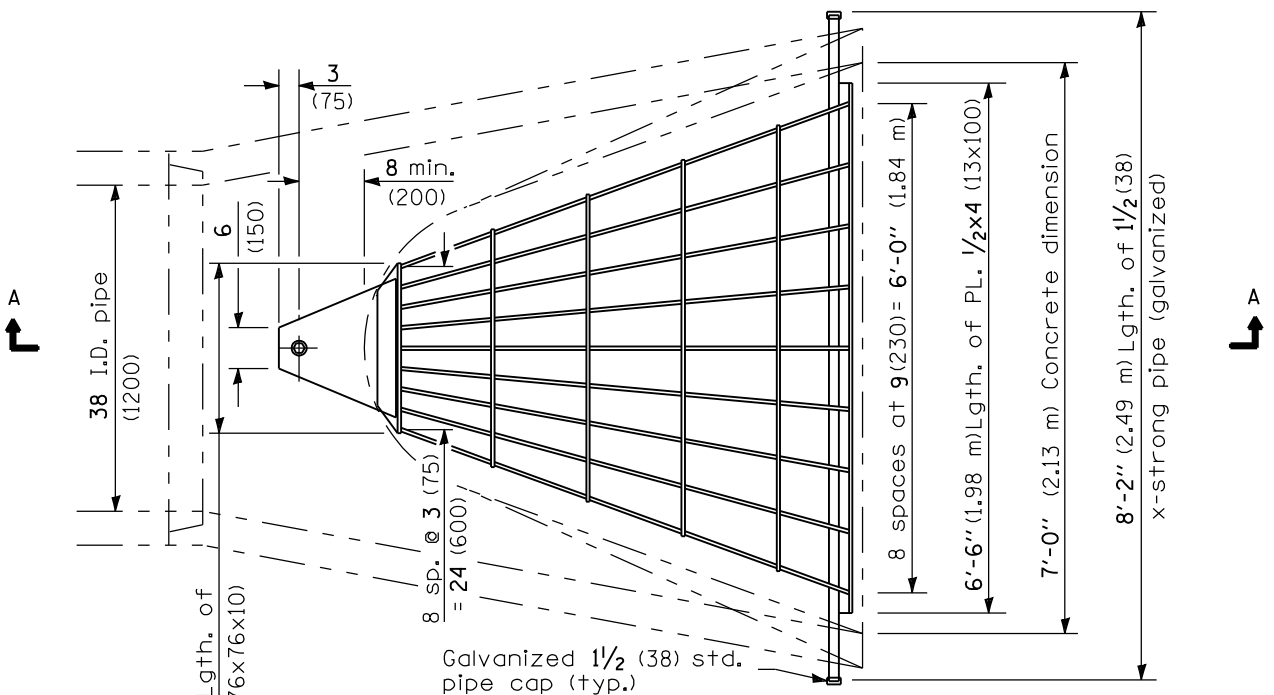
**PLAN**

Quantity of steel = 320 lbs. (145 kg)



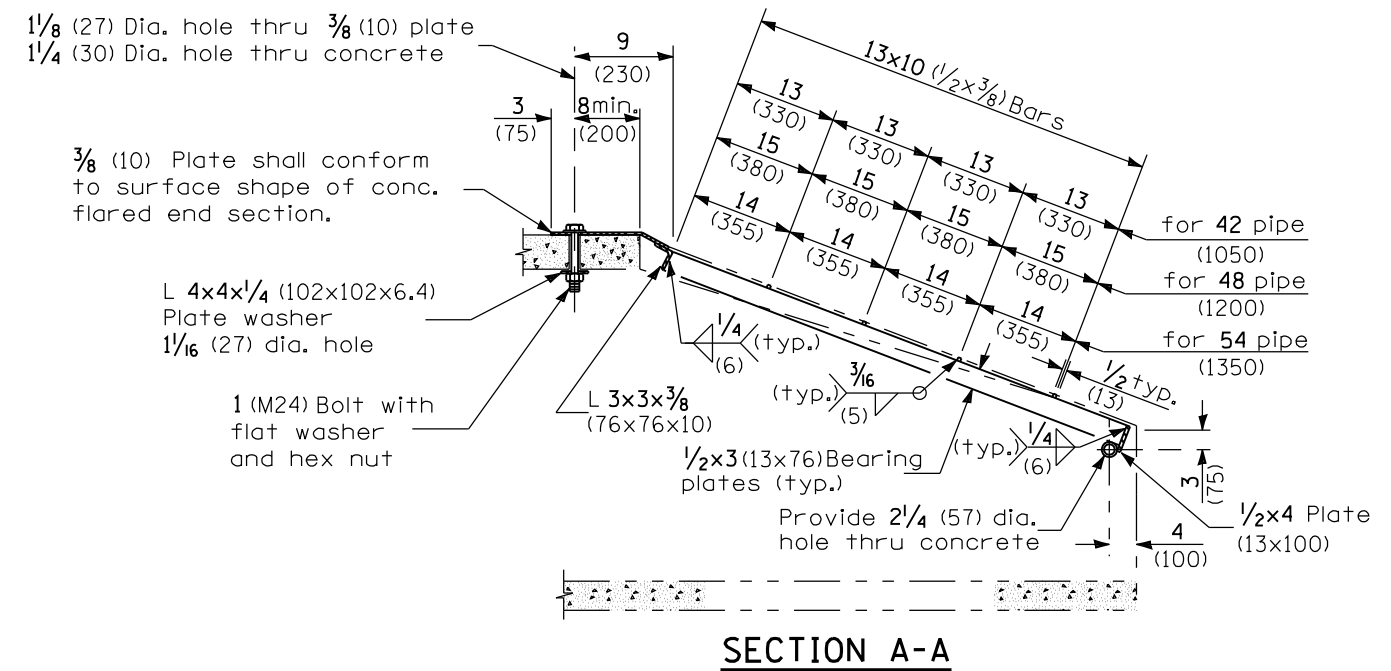
**PLAN**

Quantity of steel = 425 lbs. (193 kb)



**PLAN**

Quantity of steel = 400 lbs. (181 kg)



**SECTION A-A**