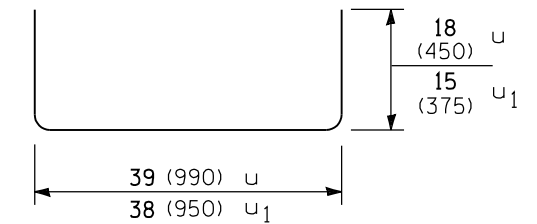
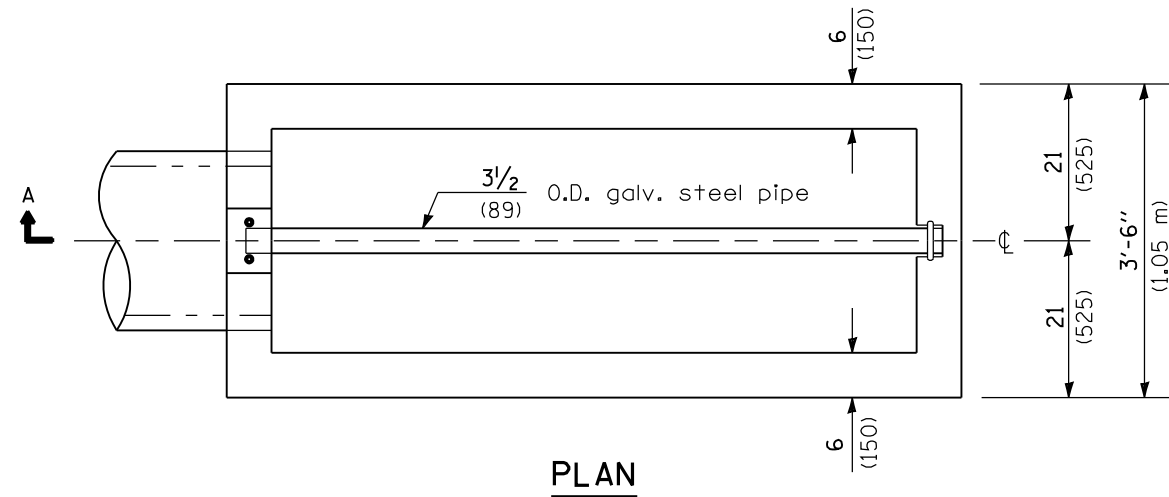
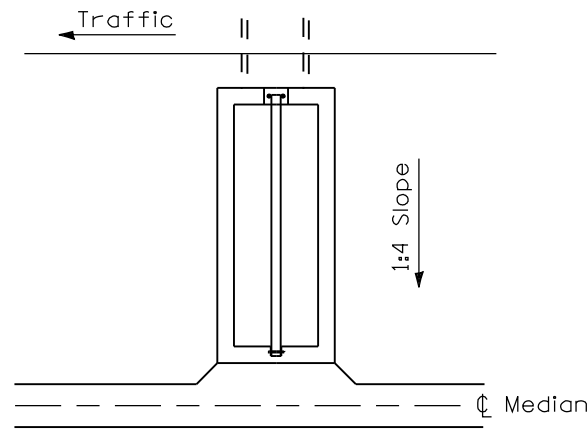
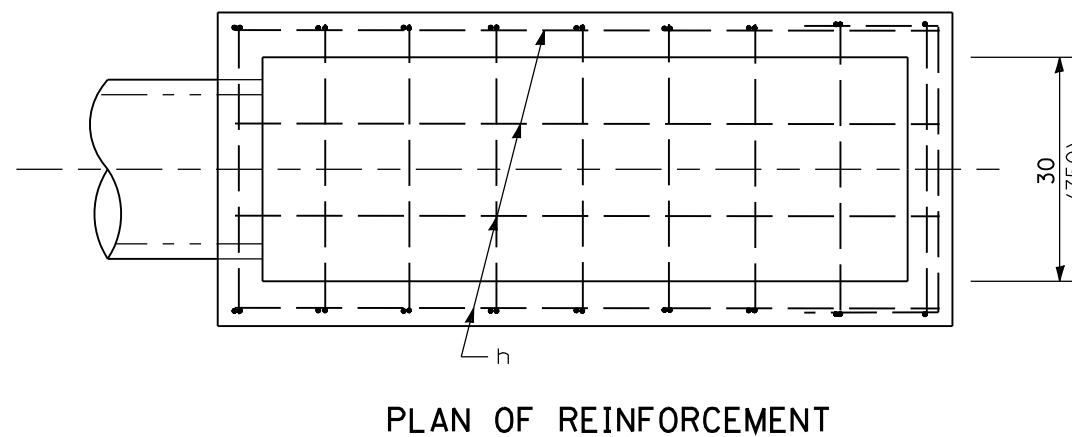


Material required for one inlet box

Bar	Qty.	Size	Length
h	10	No. 4 (No. 13)	7'-9" (2.35 m)
u	10	No. 4 (No. 13)	6'-3" (1.90 m)
u <sub>1</sub>	1	No. 4 (No. 13)	5'-8" (1.70 m)
v	6	No. 4 (No. 13)	30 (760)
v <sub>1</sub>	4	No. 4 (No. 13)	24 (610)
v <sub>2</sub>	2	No. 4 (No. 13)	18 (460)
Galv. Steel Pipe		3 1/2 O.D. (89)	8'-0" (2.38 m)
Concrete		cu. yds. (m <sup>3</sup> )	1.2 (0.9)
Reinf. Bars		lbs. (kg)	115 (52.2)



Bars u & u<sub>1</sub>



PLAN OF REINFORCEMENT

GENERAL NOTES

All slope ratios are expressed as units of vertical displacement to units of horizontal displacement (V:H).

All dimensions are in inches (millimeters) unless otherwise shown.

DATE	REVISIONS
1-1-09	Switched units to English (metric).
1-1-07	Soft converted metric reinforcement bars.

INLET BOX  
TYPE 24 (600) A

(Sheet 1 of 2)

STANDARD 542501-02

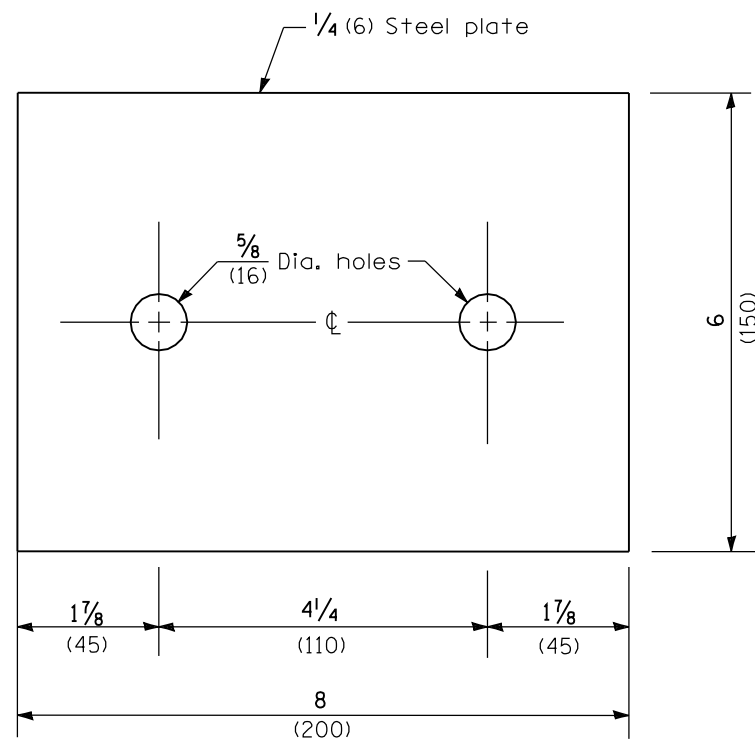
Illinois Department of Transportation

PASSED January 1, 2009  
*Scott S. ...*  
 ENGINEER OF POLICY AND PROCEDURES

APPROVED January 1, 2009  
*Ken E. ...*  
 ENGINEER OF DESIGN AND ENVIRONMENT

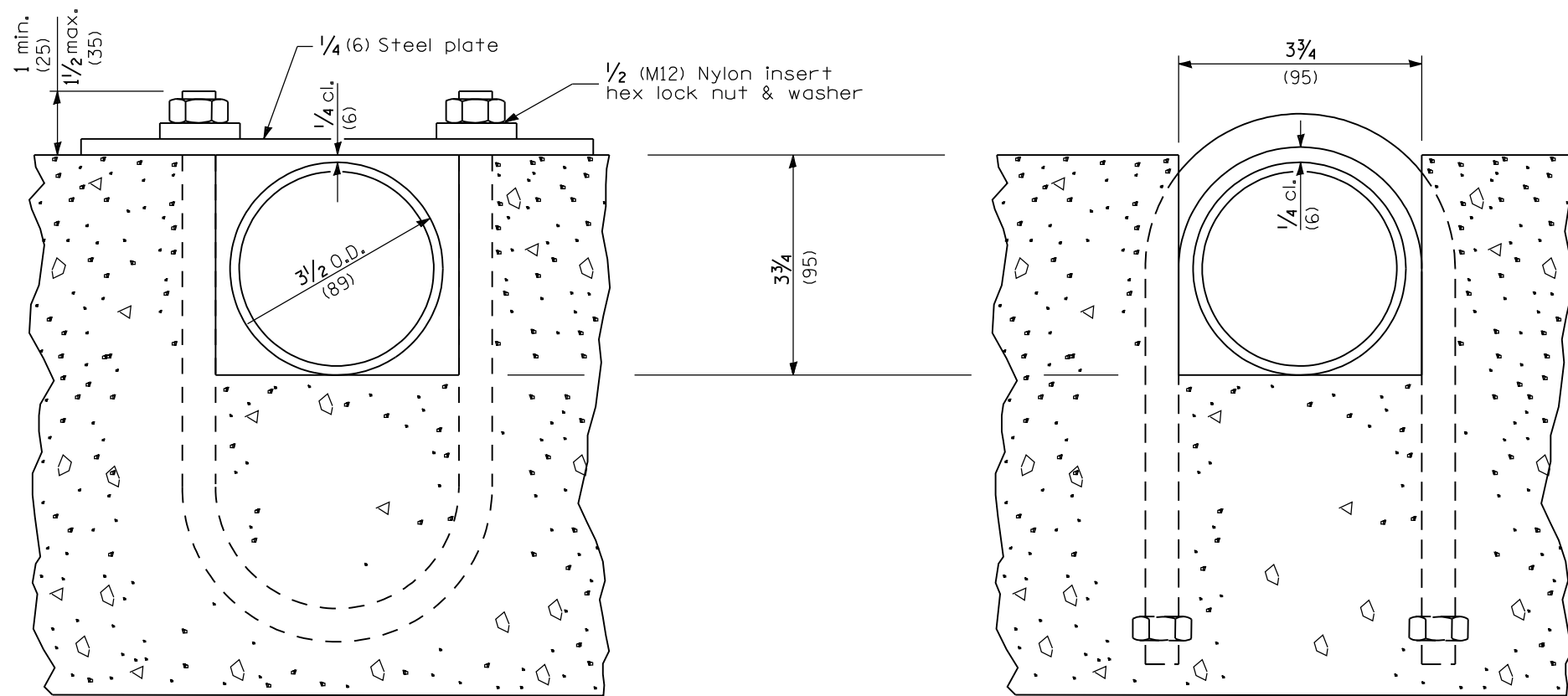
ISSUED 1-1-07

Sketch showing location and direction of box in relation to median.



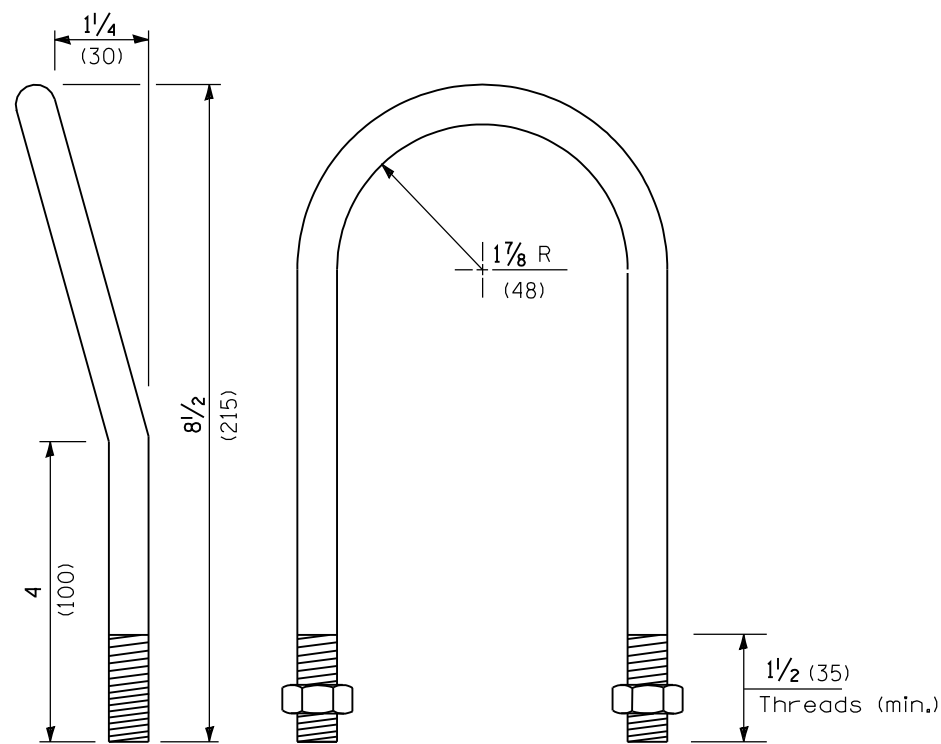
**TOP ANCHOR PLATE**

(1 - required)



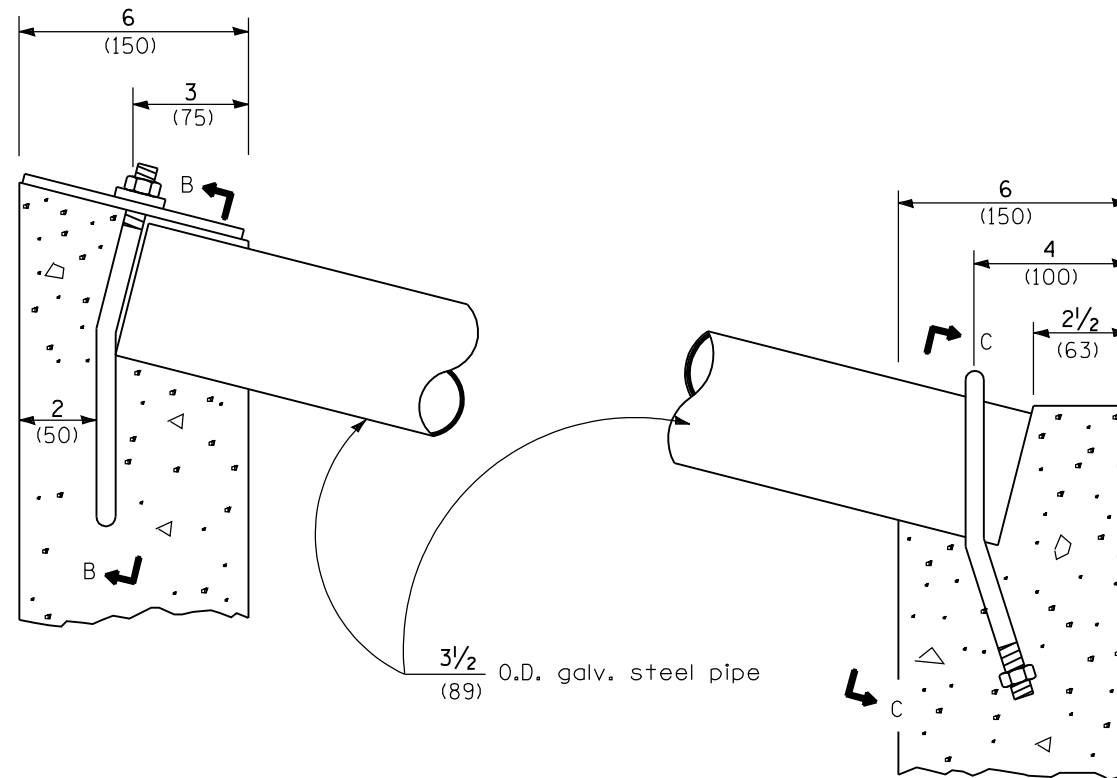
**SECTION B-B**

**SECTION C-C**



**1/2 (M12) U BOLT**

(2 - required)



**DETAIL AT BLOCKOUTS**

Illinois Department of Transportation  
 PASSED January 1, 2009  
 ENGINEER OF POLICY AND PROCEDURES  
 APPROVED January 1, 2009  
 ENGINEER OF DESIGN AND ENVIRONMENT

ISSUED 1-1-07

**INLET BOX  
 TYPE 24 (600) A**

(Sheet 2 of 2)

**STANDARD 542501-02**