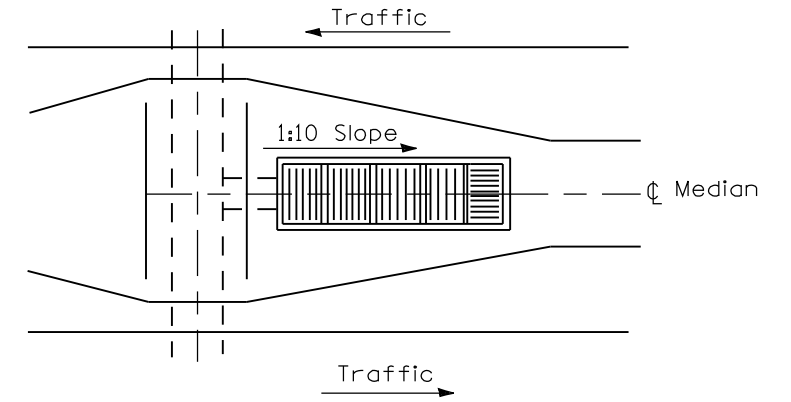
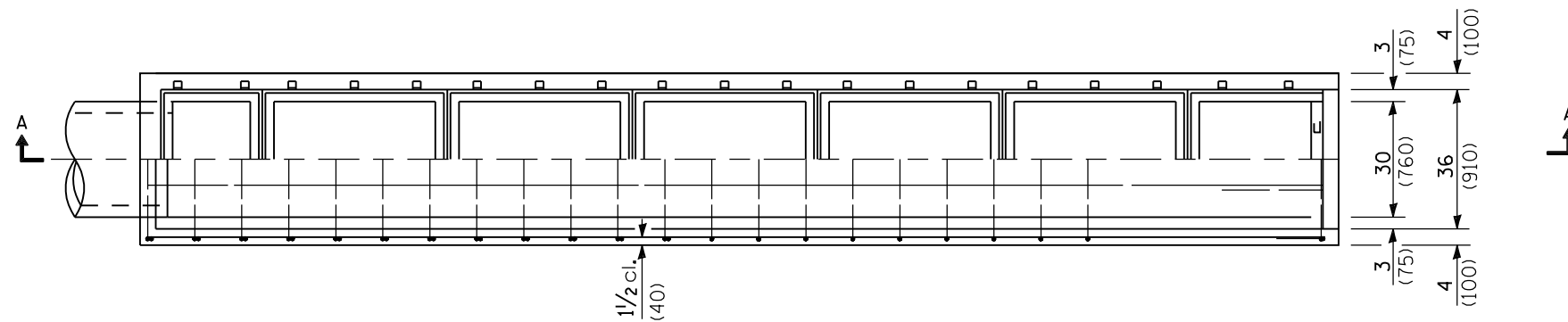


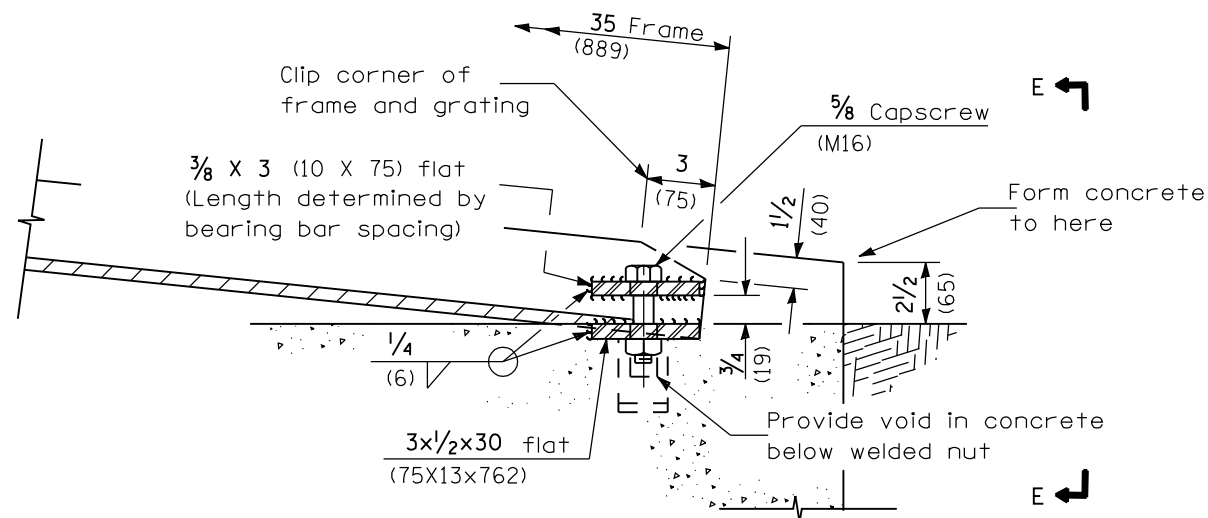
SECTION A-A



Sketch showing location and direction of main bearing bars in relation to ϕ median



PLAN



DETAIL A

GENERAL NOTES

If field conditions permit, the bottom of the inlet box shall have a 2 (50) slope.

All slope ratios are expressed as units of vertical displacement to units of horizontal displacement (V:H).

All dimensions are in inches (millimeters) unless otherwise shown.

DATE	REVISIONS
1-1-09	Switched units to English (metric). Revised General Notes.
1-1-07	Increased depth of f & g. Soft covered metric rebars.

**INLET BOX
TYPE 24 (600) F**

(Sheet 1 of 2)

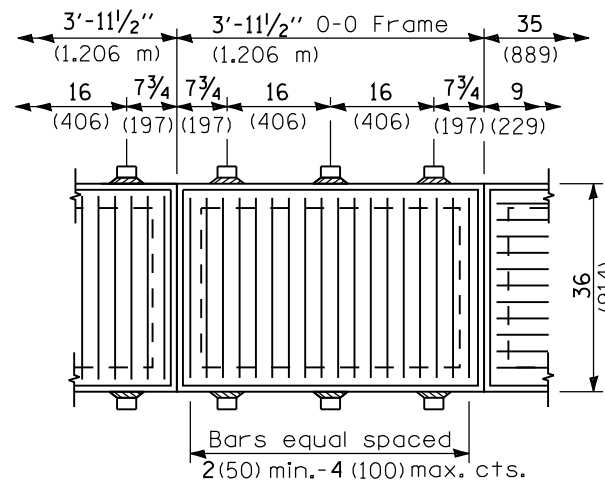
STANDARD 542526-02

Illinois Department of Transportation

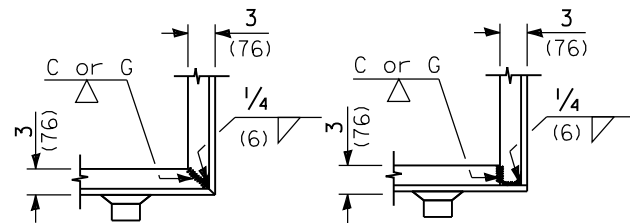
PASSED January 1, 2009
Scott Shih
 ENGINEER OF POLICY AND PROCEDURES

APPROVED January 1, 2009
Ken E. Han
 ENGINEER OF DESIGN AND ENVIRONMENT

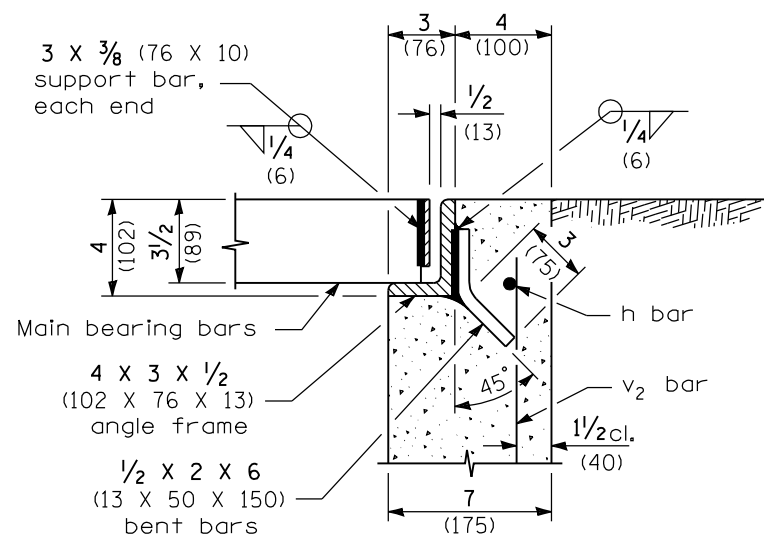
ISSUED 1-1-07
 J6-1-1-07



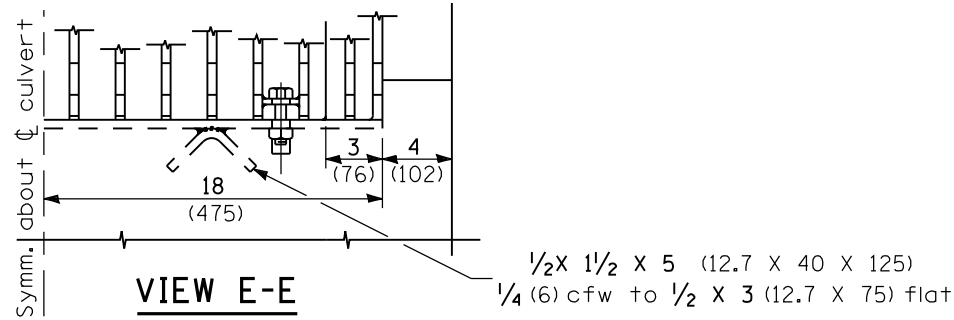
TYPICAL STEEL GRATING



TYPICAL CORNER OF STEEL GRATING FRAME



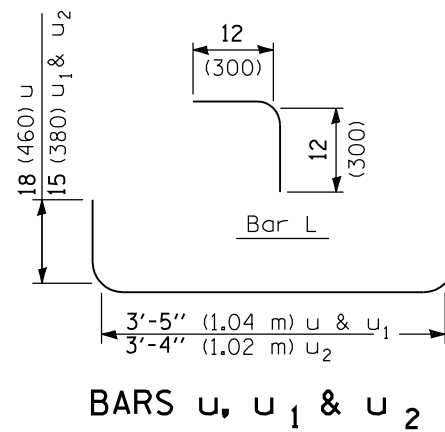
SECTION B-B



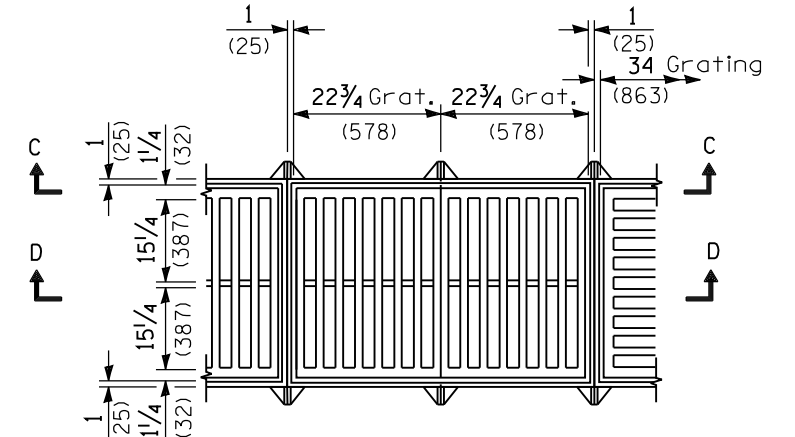
VIEW E-E

Material Required for One Inlet Box

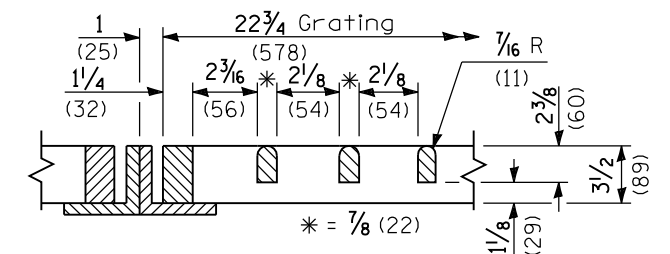
Bar	No.	Size	Length
h	6	No. 4 (No. 13)	25'-0" (7.62 m)
h ₁	2	No. 4 (No. 13)	11'-0" (3.35 m)
L	4	No. 4 (No. 13)	24 (600)
u	17	No. 4 (No. 13)	6'-5" (1.96 m)
u ₁	6	No. 4 (No. 13)	5'-11" (1.80 m)
u ₂	2	No. 4 (No. 13)	5'-10" (1.78 m)
v	2	No. 4 (No. 13)	30 (760)
v ₁	6	No. 4 (No. 13)	27 (690)
v ₂	6	No. 4 (No. 13)	24 (610)
v ₃	10	No. 4 (No. 13)	18 (460)
Concrete		cu. yds. (m ³)	3.4 (2.6)
Reinf. Bars		lbs. (kg)	250 (113)
Grating		(sq. ft.) (m ²)	70.4 (6.54)



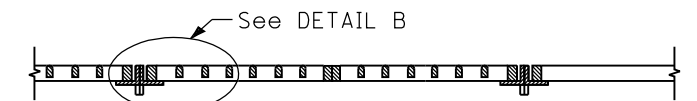
BARS u, u₁ & u₂



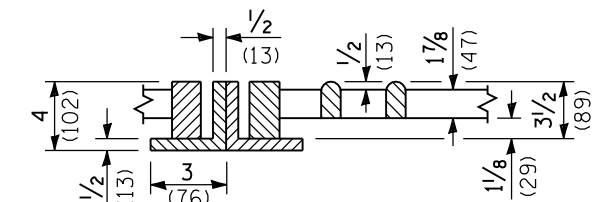
TYPICAL CAST GRATING



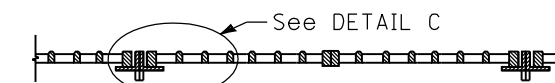
DETAIL B



SECTION C-C



DETAIL C



SECTION D-D

**INLET BOX
TYPE 24 (600) F**

(Sheet 2 of 2)

STANDARD 542526-02