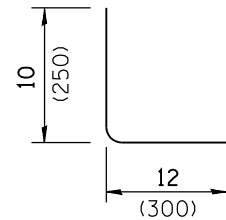
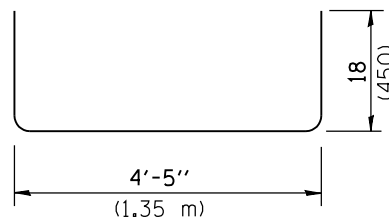


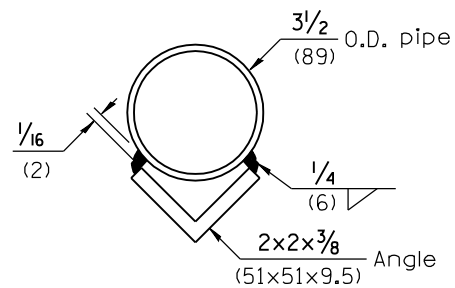
Bar h₂



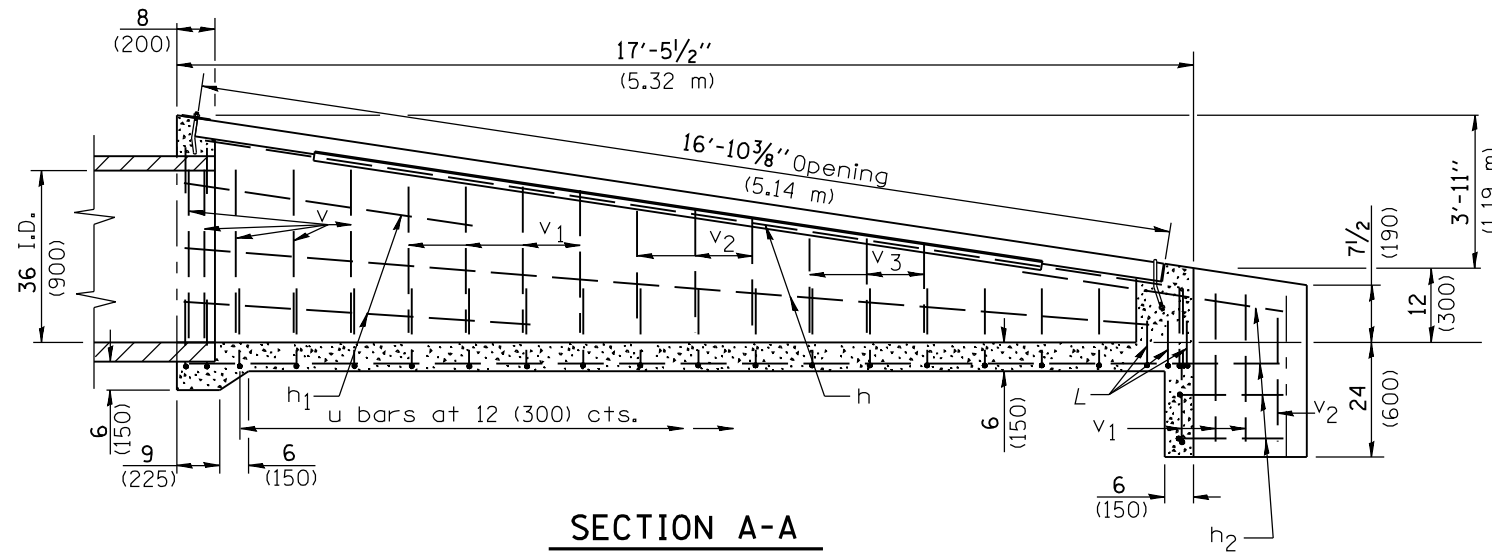
Bar L



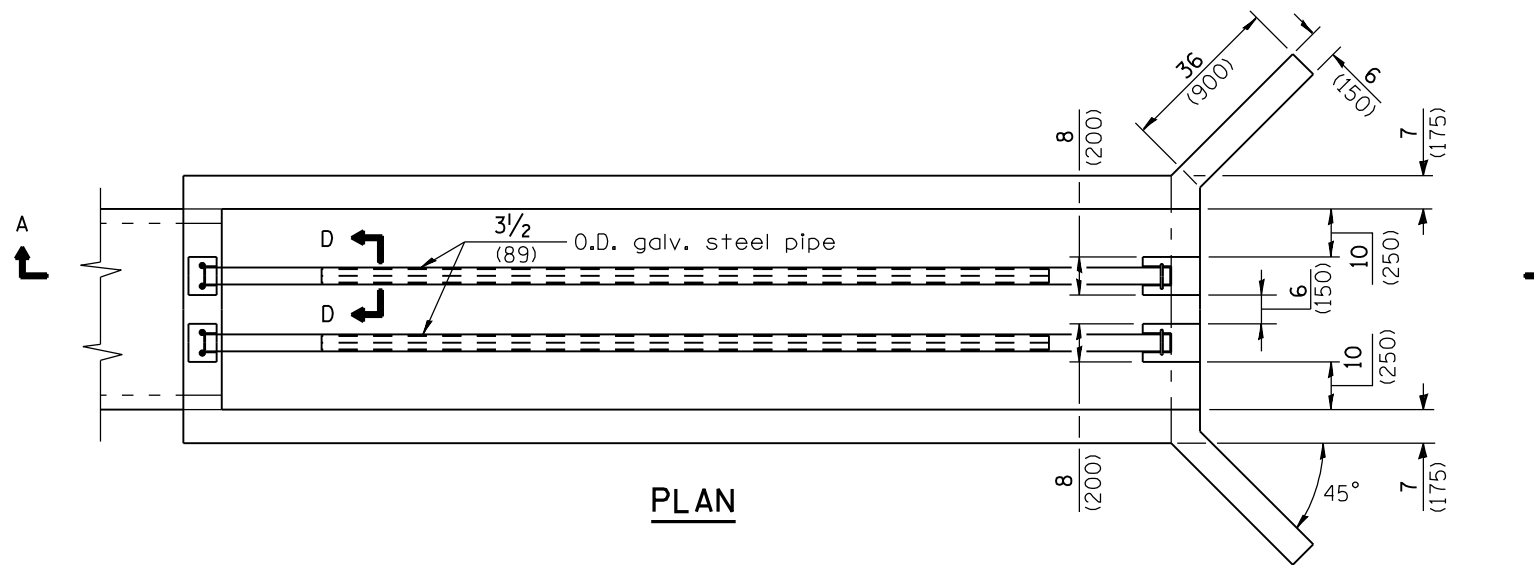
Bar u



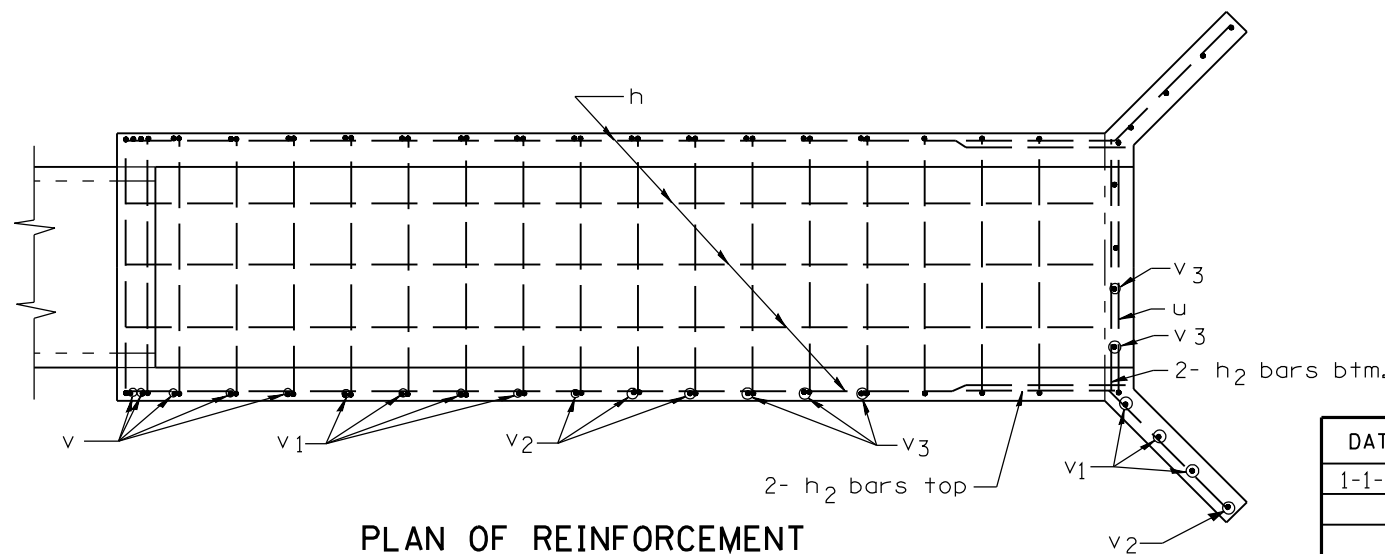
SECTION D-D



SECTION A-A



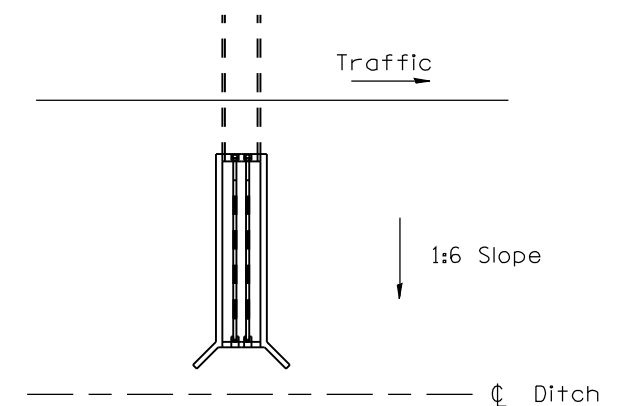
PLAN



PLAN OF REINFORCEMENT

Material required for one inlet box

Bar	Qty.	Size	Length
h	9	No. 4 (No. 13)	17'-0" (5.18 m)
h ₁	4	No. 4 (No. 13)	6'-3" (1.90 m)
h ₂	8	No. 4 (No. 13)	5'-0" (1.50 m)
L	6	No. 4 (No. 13)	22 (550)
u	21	No. 4 (No. 13)	7'-5" (2.25 m)
v	10	No. 4 (No. 13)	36 (910)
v ₁	14	No. 4 (No. 13)	30 (760)
v ₂	8	No. 4 (No. 13)	24 (610)
v ₃	10	No. 4 (No. 13)	18 (460)
Concrete		cu. yds. (m ³)	3.9 (3.0)
Reinf. Bars		lbs. (kg)	319 (145)
Galv. Steel Pipe		3/2 O.D. (89)	2 at 16'-10 1/8" (5.15 m)
Galv. Steel Angle		2x2x3/8 (51x51x9.5)	2 at 12'-10" (3.90 m)



Sketch showing location and direction of box in relation to ϕ of ditch.

GENERAL NOTES

All slope ratios are expressed as units of vertical displacement to units of horizontal displacement (V:H).

All dimensions are in inches (millimeters) unless otherwise shown.

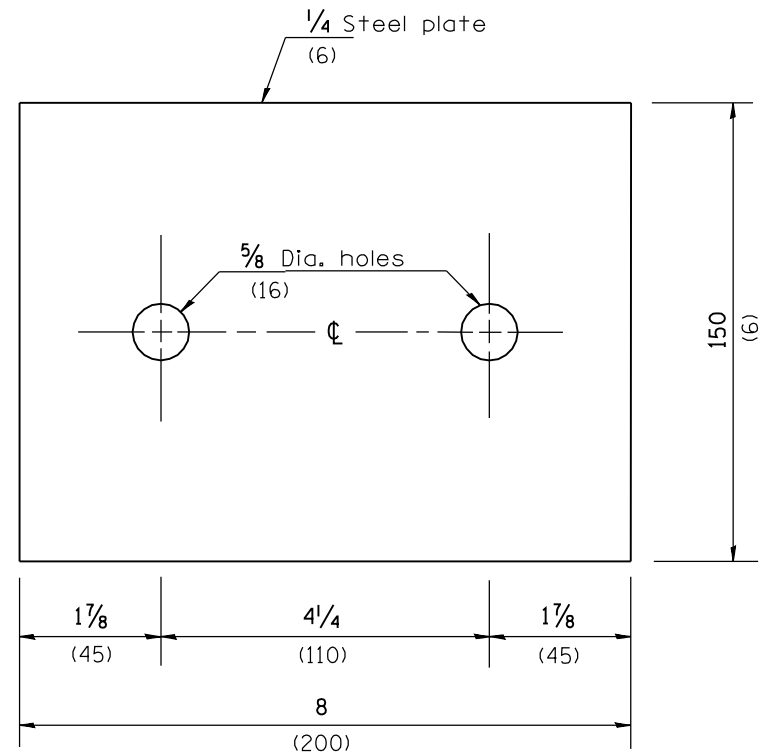
DATE	REVISIONS
1-1-09	Switched units to English (metric).
1-1-07	Soft converted metric rebars.

**INLET BOX
TYPE 36 (900) A**

(Sheet 1 of 2)

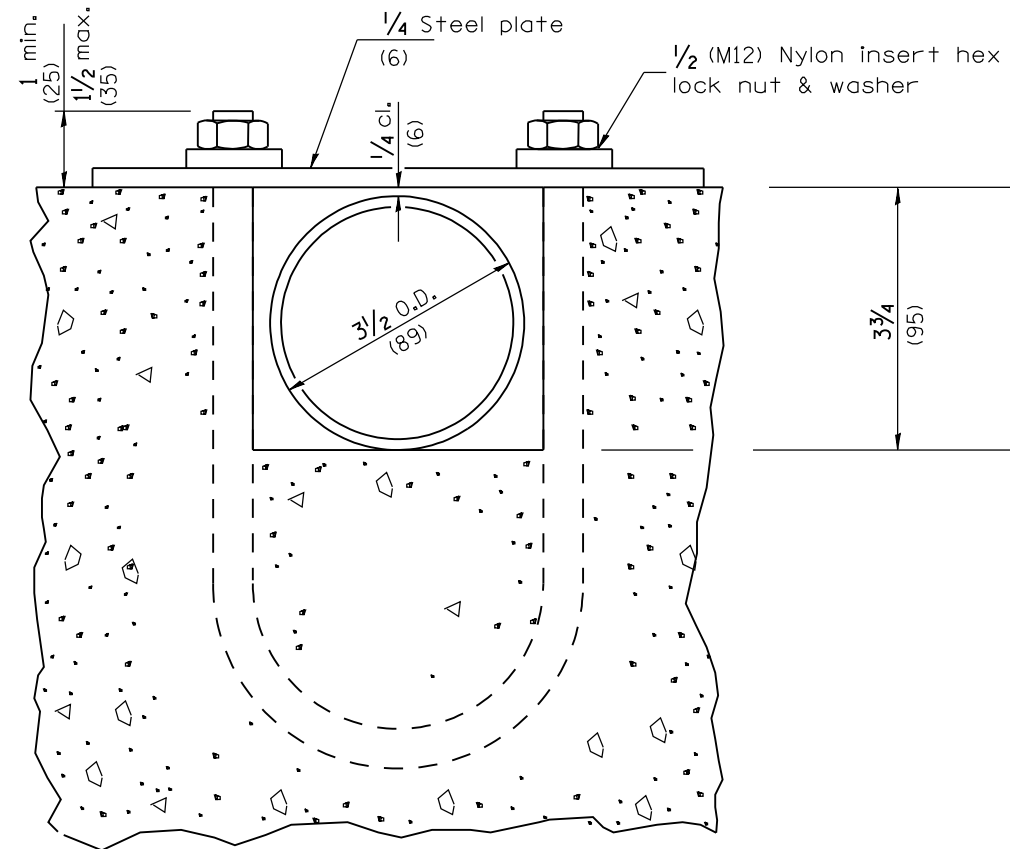
STANDARD 542536-02

Illinois Department of Transportation
 PASSED January 1, 2009
 ENGINEER OF POLICY AND PROCEDURES
 APPROVED January 1, 2009
 ENGINEER OF DESIGN AND ENVIRONMENT

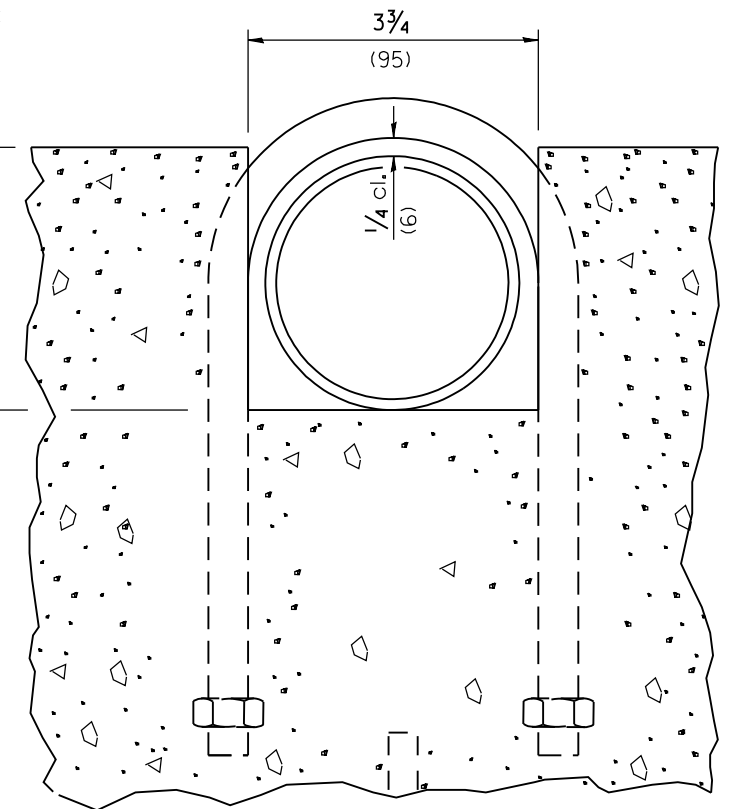


TOP ANCHOR PLATE

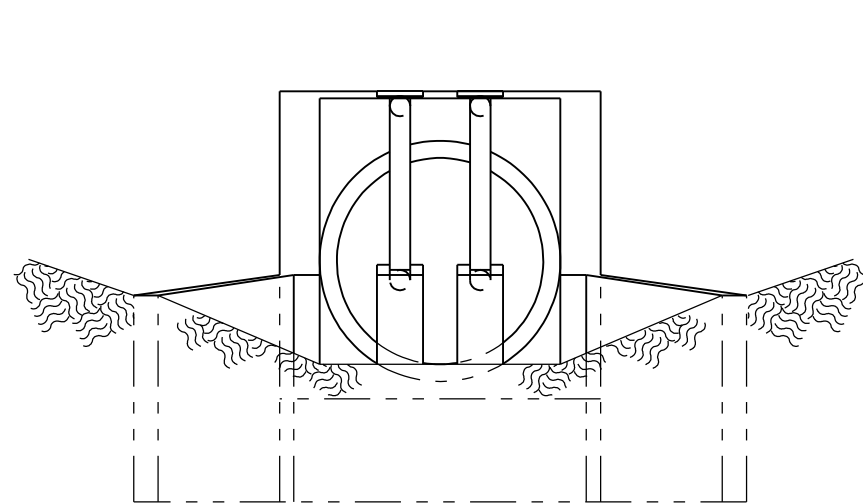
(2 - required)



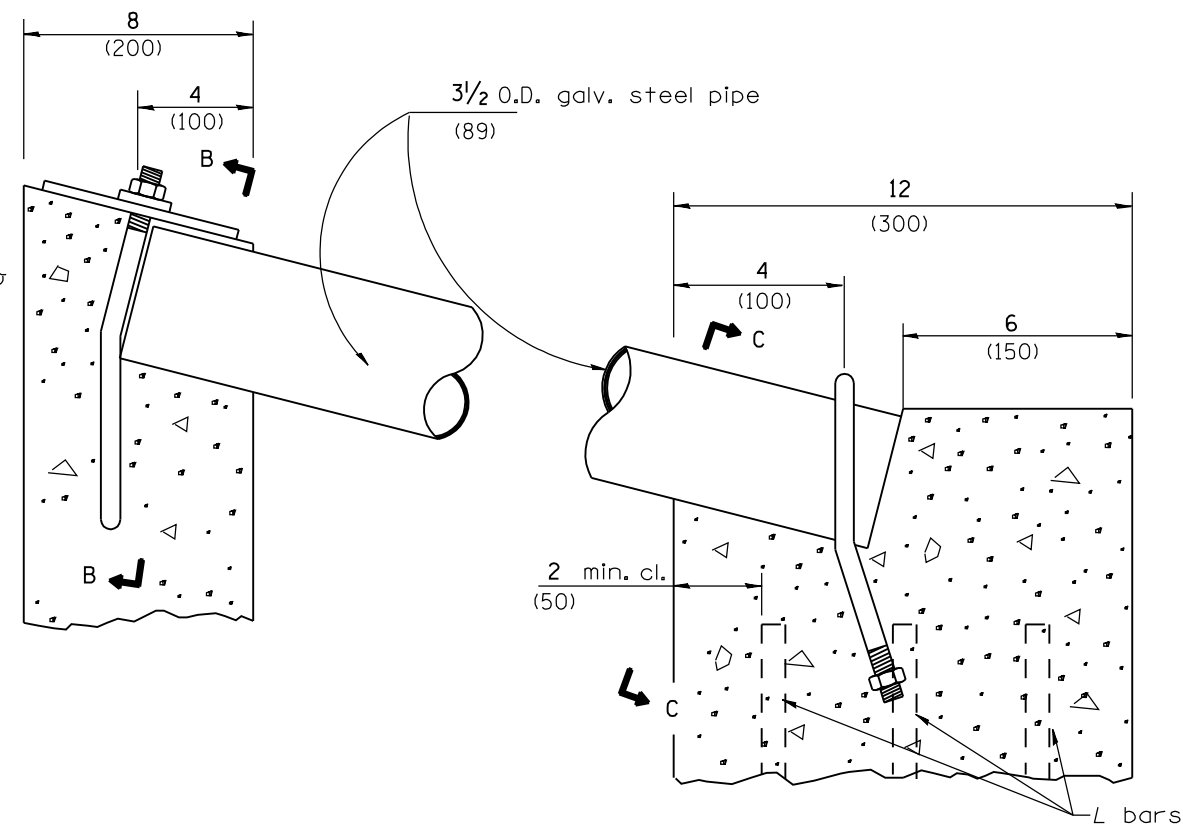
SECTION B-B



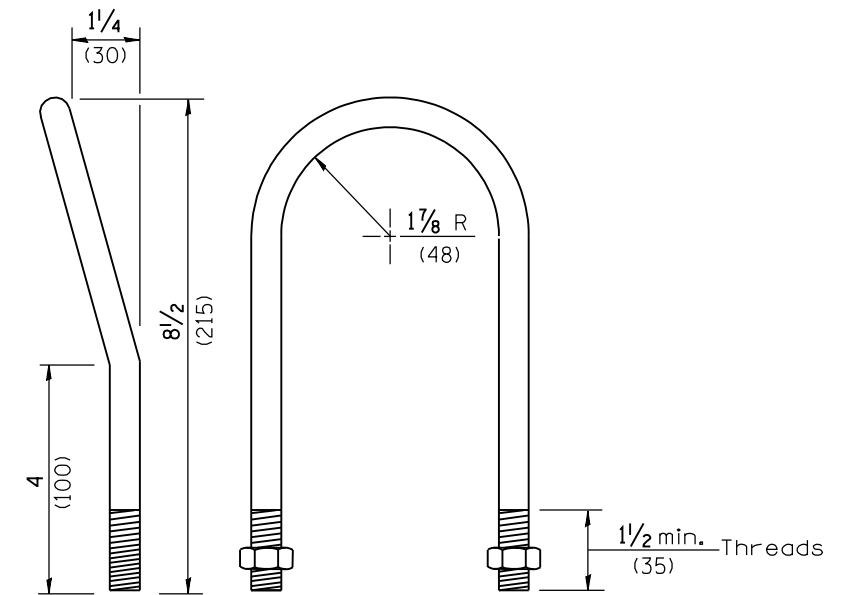
SECTION C-C



END VIEW



DETAIL AT BLOCKOUTS



1/2 (M12) U BOLT

(4 - required)

All dimensions are in inches (millimeters) unless otherwise shown.

**INLET BOX
TYPE 36 (900) A**

(Sheet 2 of 2)

STANDARD 542536-02

Illinois Department of Transportation

PASSED January 1, 2009

ENGINEER OF POLICY AND PROCEDURES

APPROVED January 1, 2009

ENGINEER OF DESIGN AND ENVIRONMENT

ISSUED 1-1-97