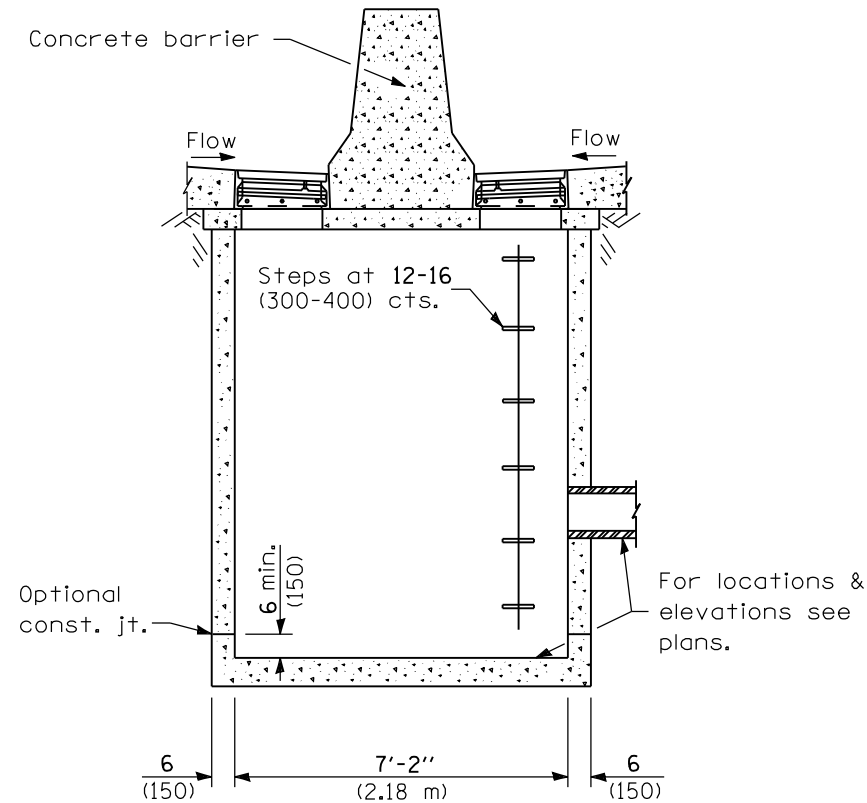
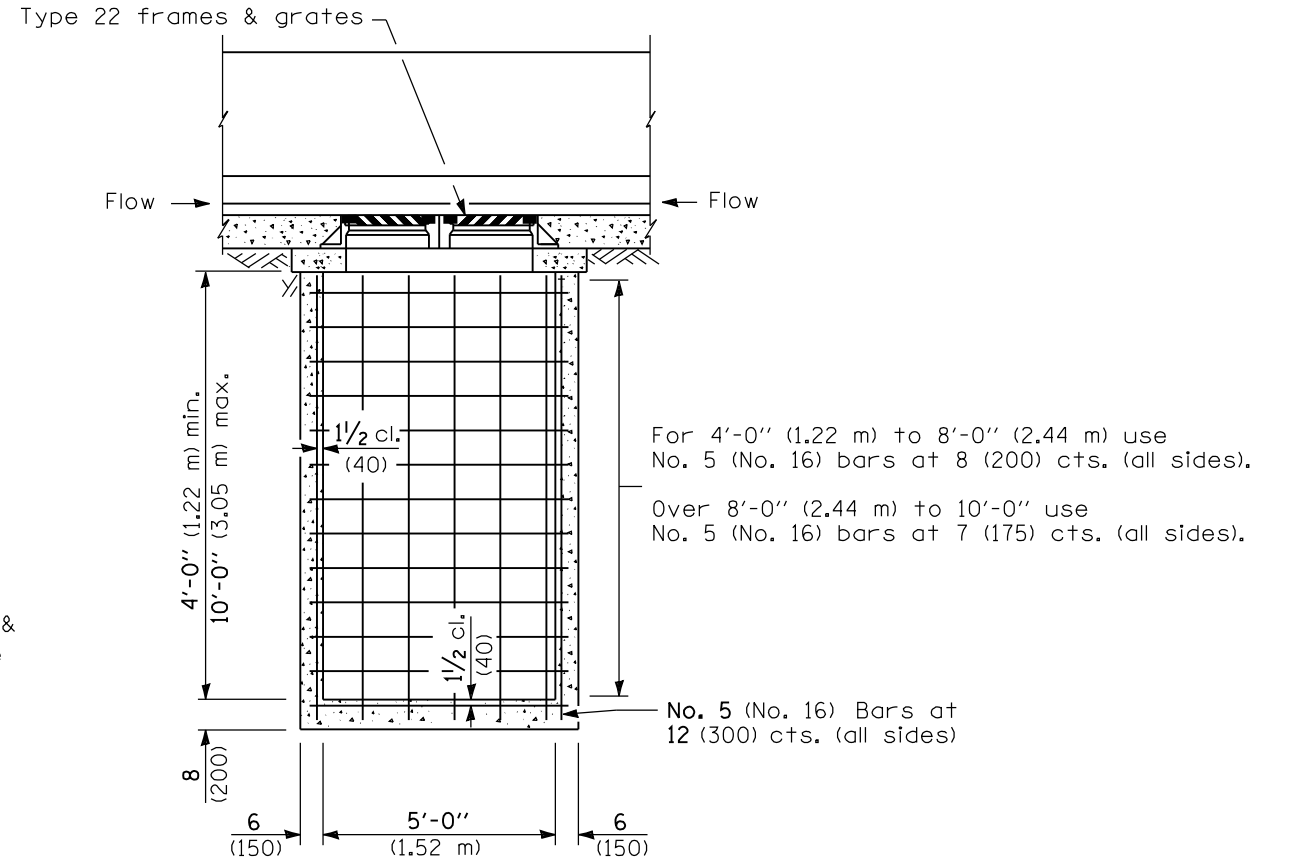


FRONT ELEVATION - TYPE 4



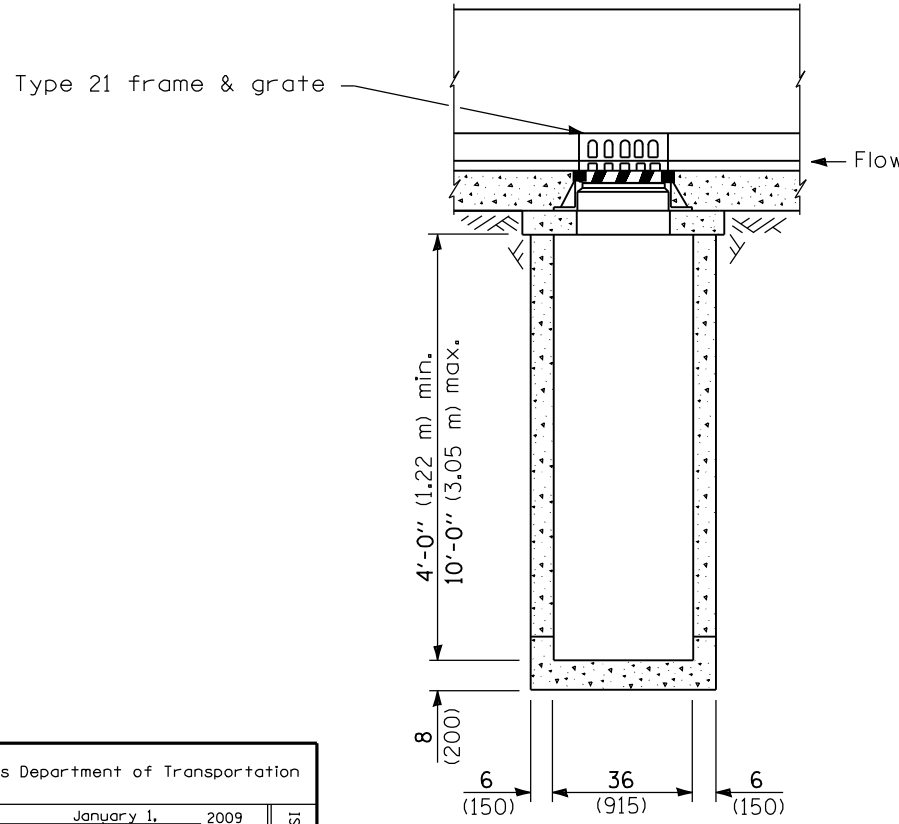
SIDE ELEVATION - TYPE 4 & 5



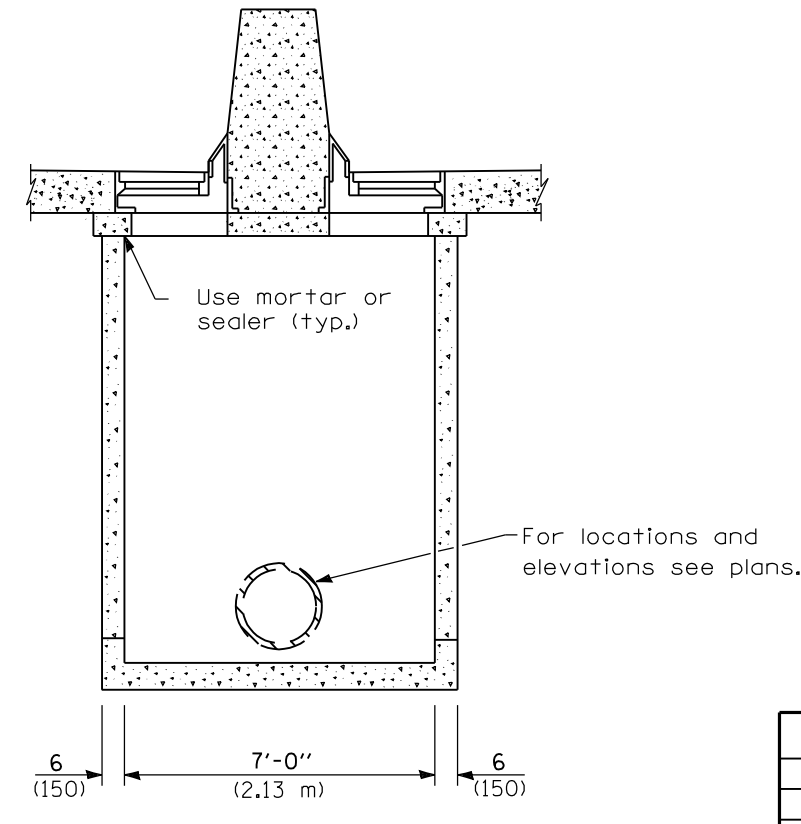
FRONT ELEVATION - TYPE 5

For 4'-0" (1.22 m) to 8'-0" (2.44 m) use No. 5 (No. 16) bars at 8 (200) cts. (all sides).
Over 8'-0" (2.44 m) to 10'-0" use No. 5 (No. 16) bars at 7 (175) cts. (all sides).

No. 5 (No. 16) Bars at 12 (300) cts. (all sides)



FRONT ELEVATION - TYPE 6



SIDE ELEVATION - TYPE 6

GENERAL NOTES

These structures are for use with concrete barrier, double face, 42 (1065) height (Standard 637006).

The reinforcement shown in the front elevation of the Type 5 is typical for both elevations of all types.

See Standard 602701 for details of steps.

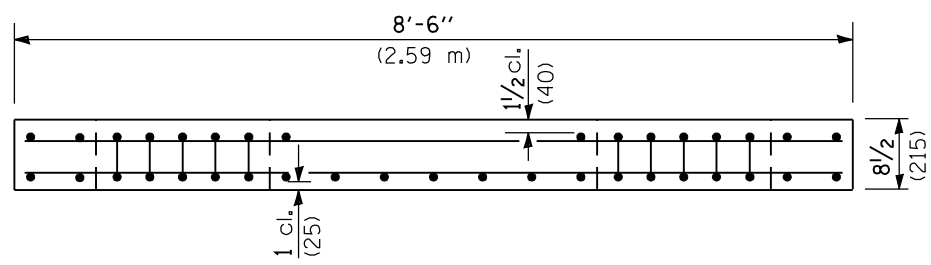
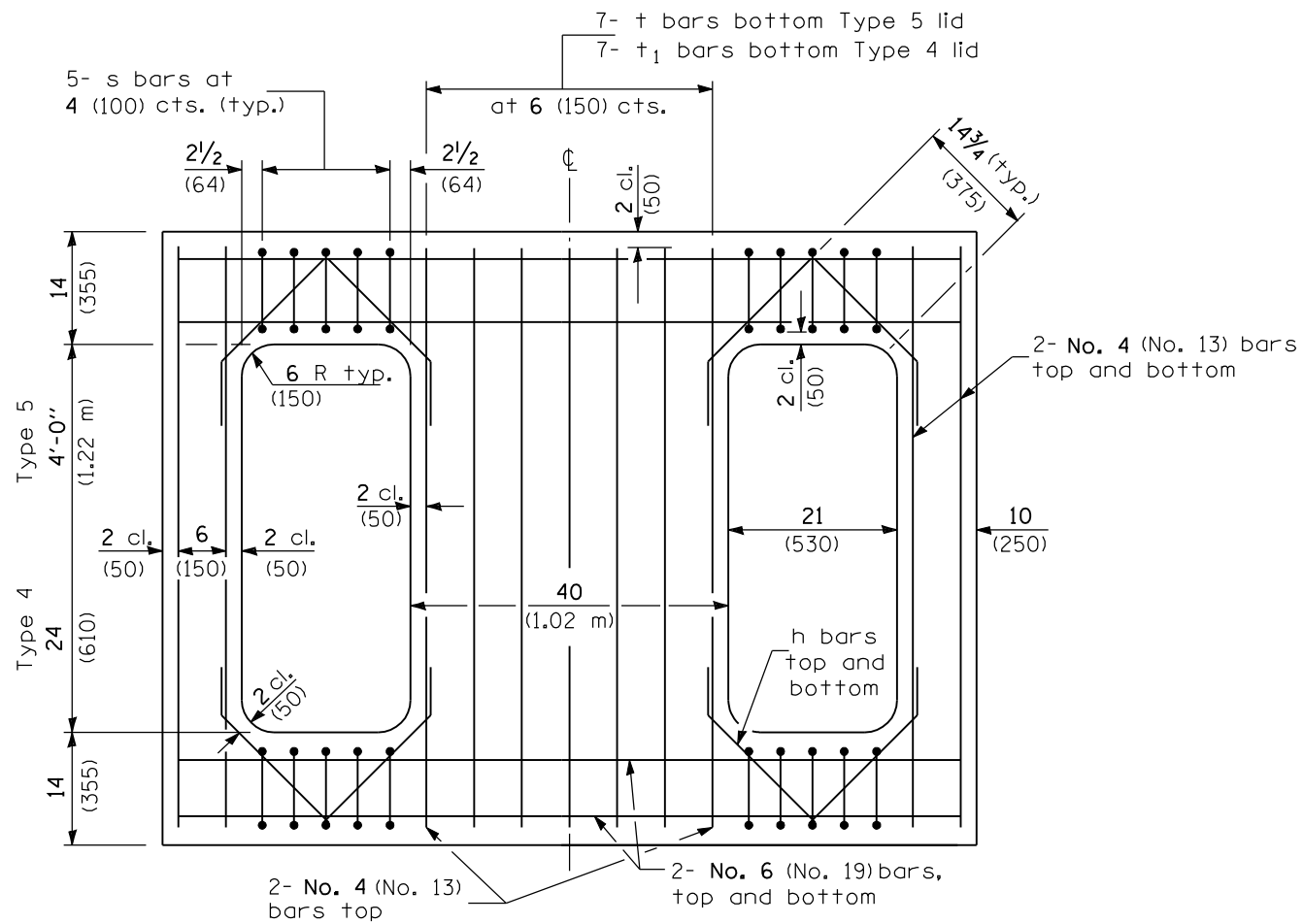
Exposed edges shall be beveled 3/4 (19).

All dimensions are in inches (millimeters) unless otherwise shown.

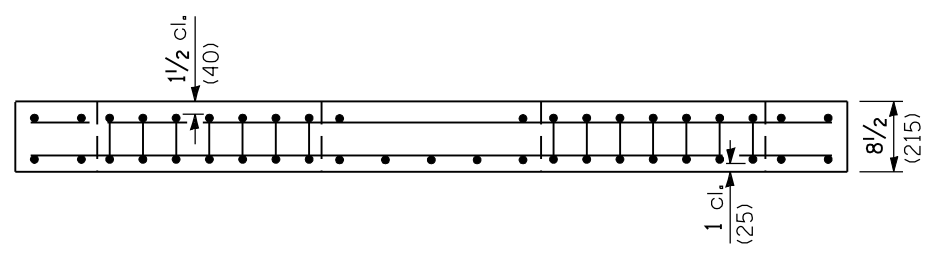
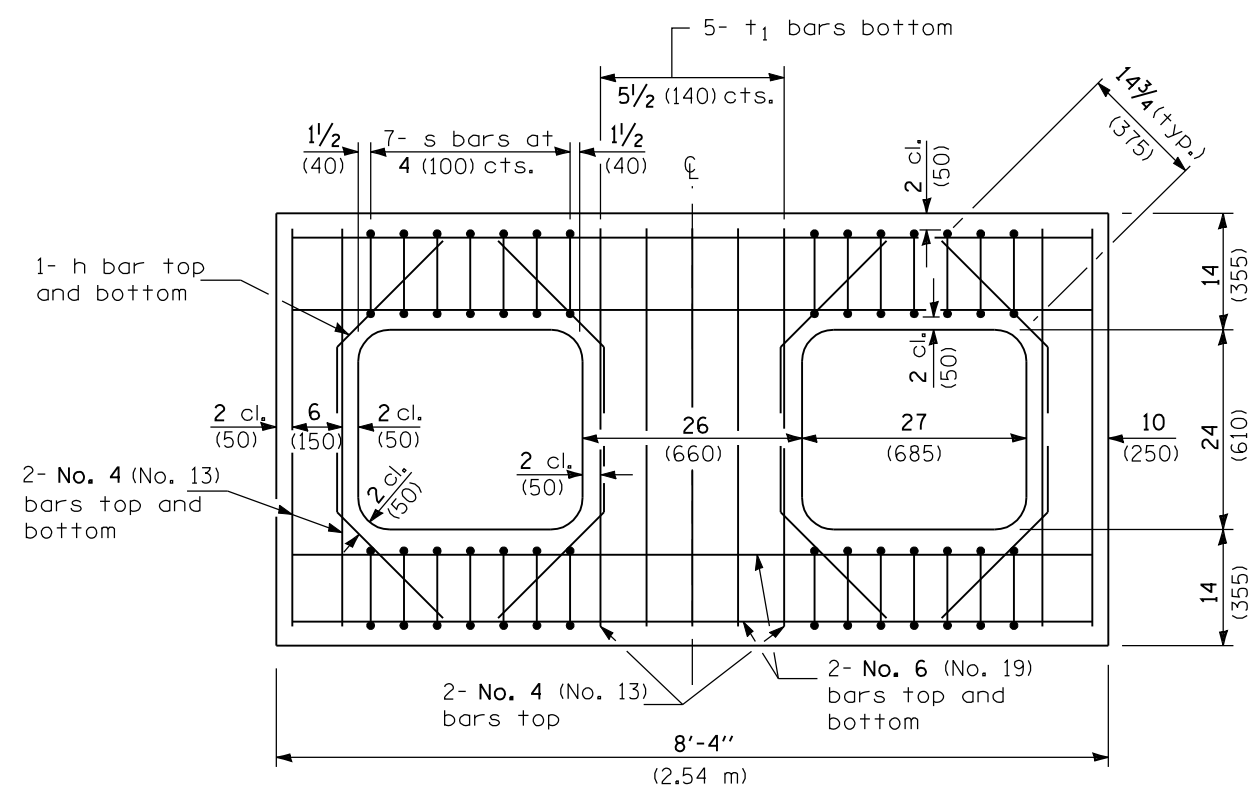
Illinois Department of Transportation
 PASSED January 1, 2009
 ENGINEER OF POLICY AND PROCEDURES
 APPROVED January 1, 2009
 ENGINEER OF DESIGN AND ENVIRONMENT

DATE	REVISIONS
1-1-09	Switched units to English (metric).
1-1-04	New standard

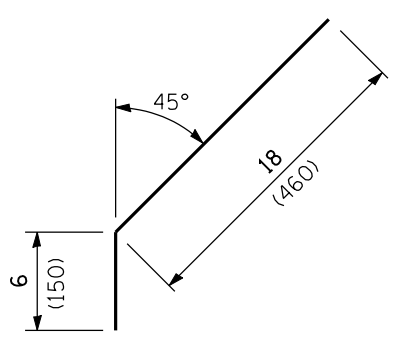
DRAINAGE STRUCTURES
TYPES 4, 5 & 6
 (Sheet 1 of 2)
STANDARD 602106-01



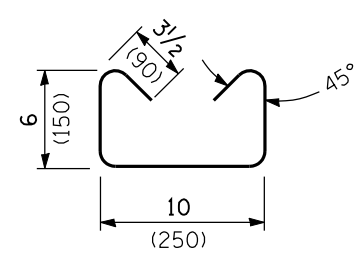
REINFORCED LID - TYPE 4 & 5



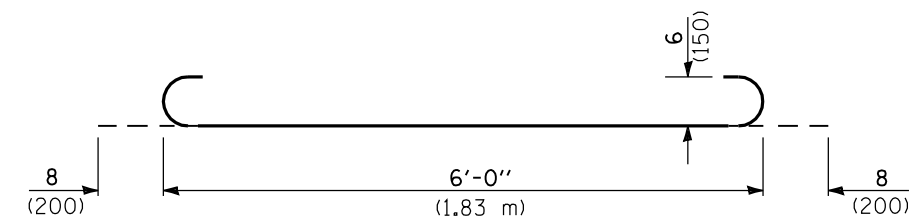
REINFORCED LID - TYPE 6



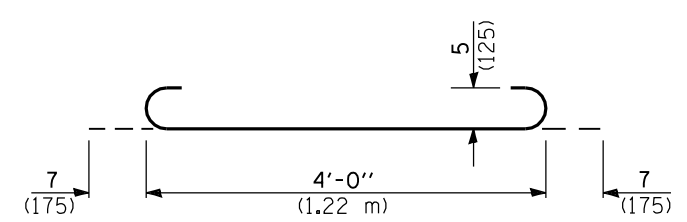
No. 4 (No. 13) Bar h



No. 3 (No. 10) Bar s



No. 6 (No. 19) Bar +



No. 5 (No. 16) Bar +1

Illinois Department of Transportation
 PASSED January 1, 2009
 ENGINEER OF POLICY AND PROCEDURES
 APPROVED January 1, 2009
 ENGINEER OF DESIGN AND ENVIRONMENT

DRAINAGE STRUCTURES
TYPES 4, 5 & 6
 (Sheet 2 of 2)
STANDARD 602106-01