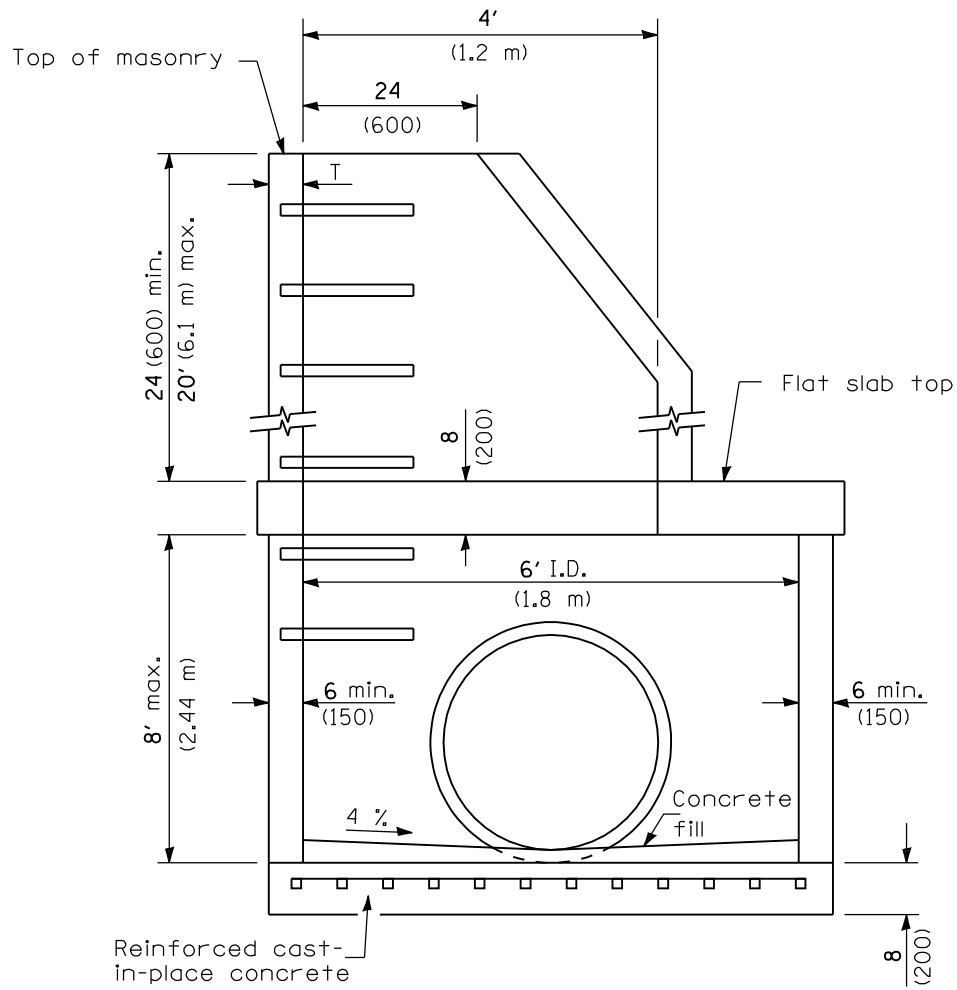
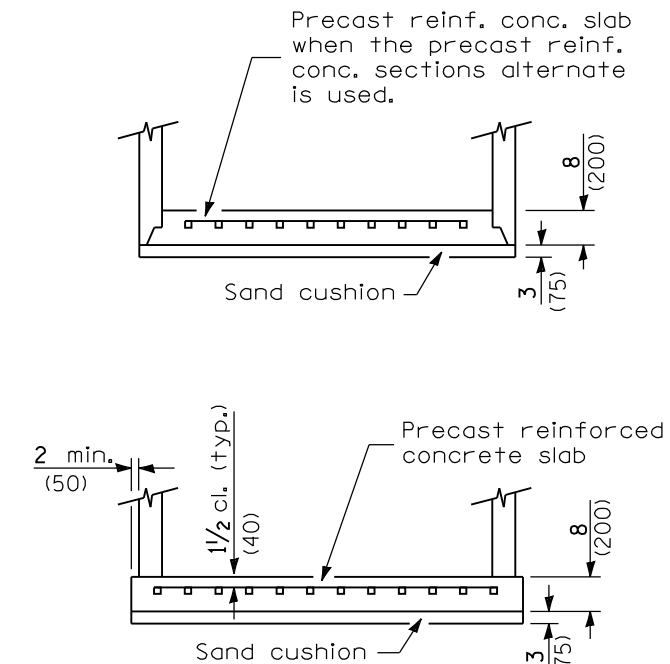


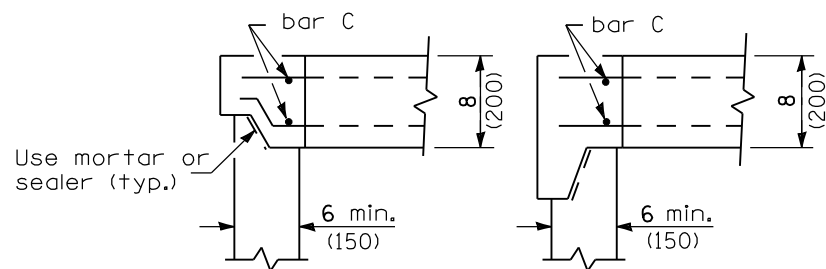
**ELEVATION**



**ELEVATION**



**ALTERNATE BOTTOM SLABS**



**ALTERNATE JOINT CONFIGURATIONS**

ALTERNATE MATERIALS FOR WALLS	T (min)
Concrete Masonry Units	5 (125)
Precast Reinforced Concrete Sections	4 (100)
Cast-in-Place Concrete	6 (150)

**GENERAL NOTES**

Joint configuration and dimensions of flat slab top shall match and fit the riser joint detail.

Lifting devices shall be approved by the Engineer.

Bottom slabs shall be reinforced with a minimum of 0.46 sq. in./ft. (975 mm<sup>2</sup>/m) in both directions.

See Standard 602701 for details of manhole steps.

All dimensions are in inches (millimeters) unless otherwise shown.

DATE	REVISIONS
1-1-09	Switched units to English (metric).
4-1-06	Revised detail for concrete fill in elevation views.

**MANHOLE TYPE A  
6' (1.8 m) DIAMETER**

(Sheet 1 of 2)

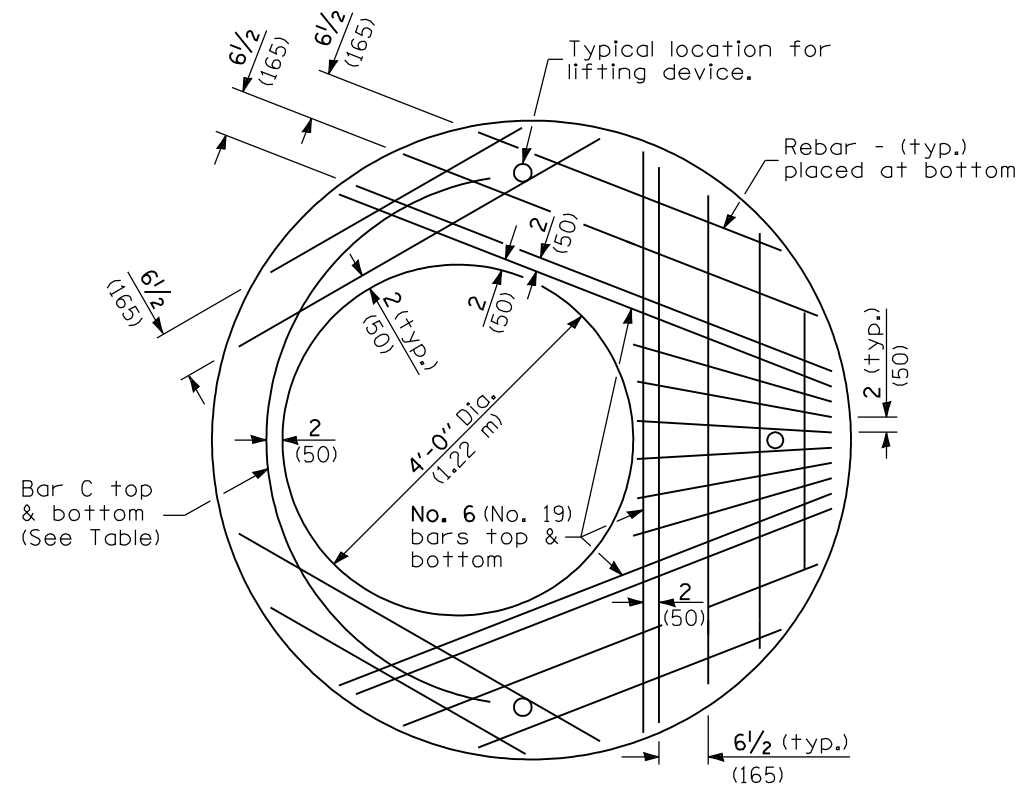
**STANDARD 602406-03**

Illinois Department of Transportation

PASSED January 1, 2009  
*Scott Schick*  
 ENGINEER OF POLICY AND PROCEDURES

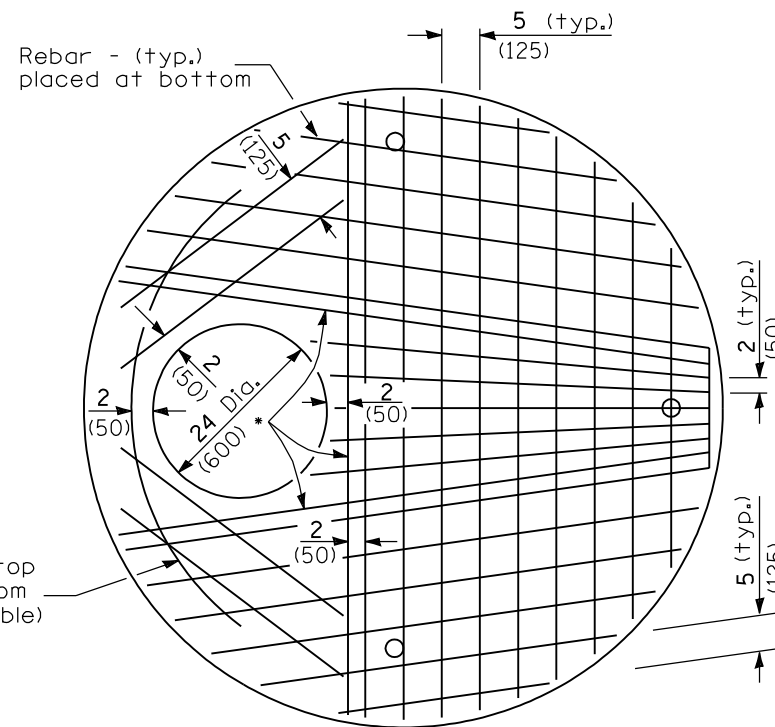
APPROVED January 1, 2009  
*Ken E. Han*  
 ENGINEER OF DESIGN AND ENVIRONMENT

ISSUED 1-1-97



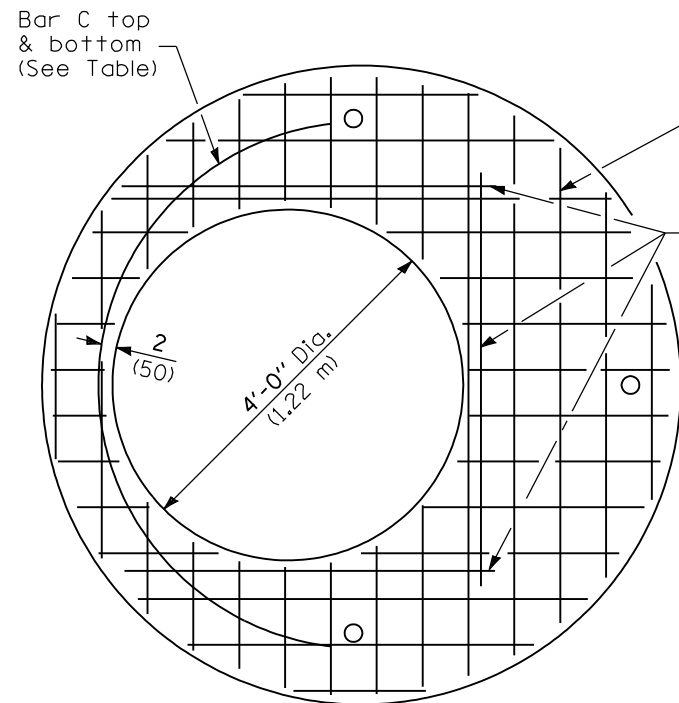
**PLAN**

Showing Rebar Reinforcement



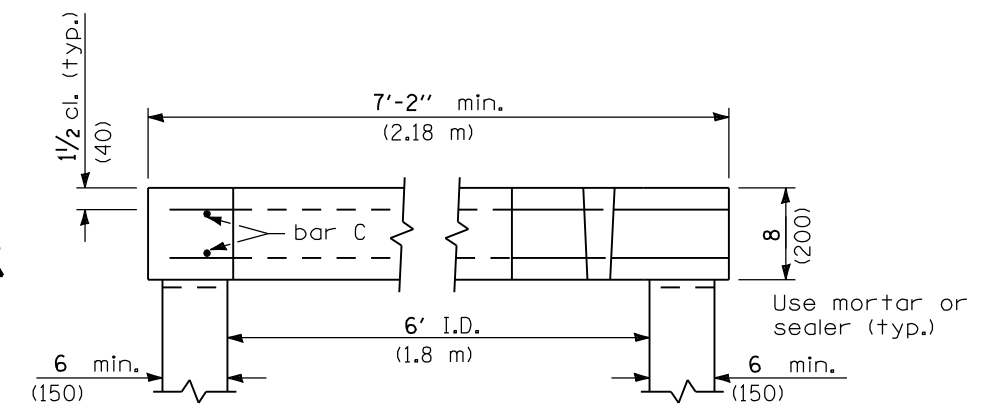
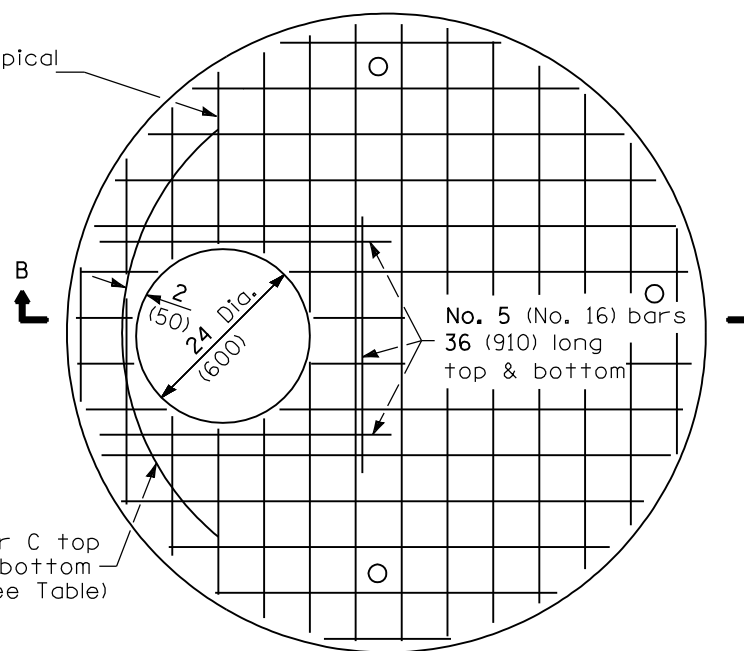
\* No. 6 (No. 19) bars top & bottom

Diameter of opening	Thickness	Reinforcement "As" WWF Each direction	Bar Size	No. 4 (No. 13) Bar C	
				Length	Radius
24 (600)	8 (200)	1.06 sq. in./ft. (2244 sq. mm/m)	No. 6 (No. 19)	6'-0" (1.83 m)	38 (965)
4'-0" (1.2 m)	8 (200)	0.82 sq. in./ft. (1736 sq. mm/m)	No. 6 (No. 19)	9'-0" (2.74 m)	38 (965)



**PLAN**

Showing Welded Wire Fabric Reinforcement



**SECTION B-B**

Illinois Department of Transportation  
 PASSED January 1, 2009  
 ENGINEER OF POLICY AND PROCEDURES  
 APPROVED January 1, 2009  
 ENGINEER OF DESIGN AND ENVIRONMENT

**MANHOLE TYPE A**  
**6' (1.8 m) DIAMETER**  
 (Sheet 2 of 2)  
**STANDARD 602406-03**