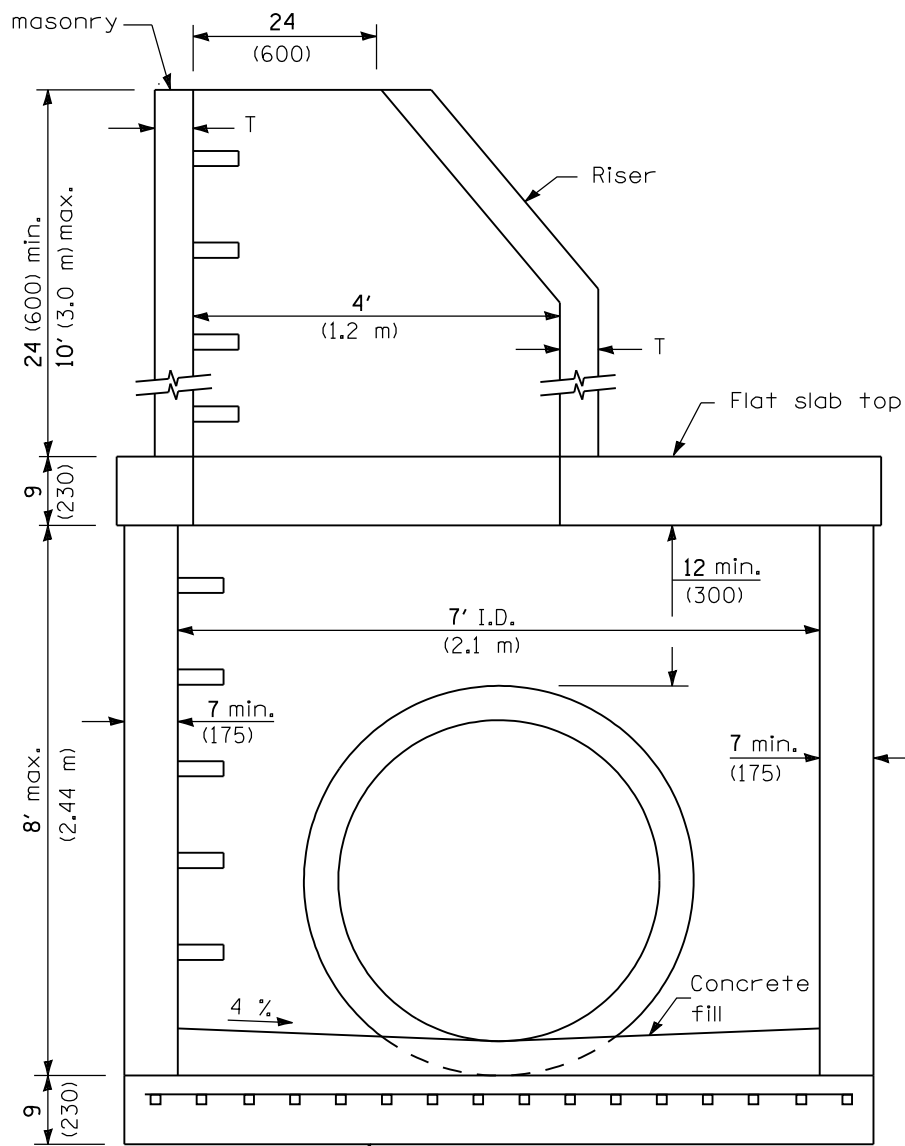


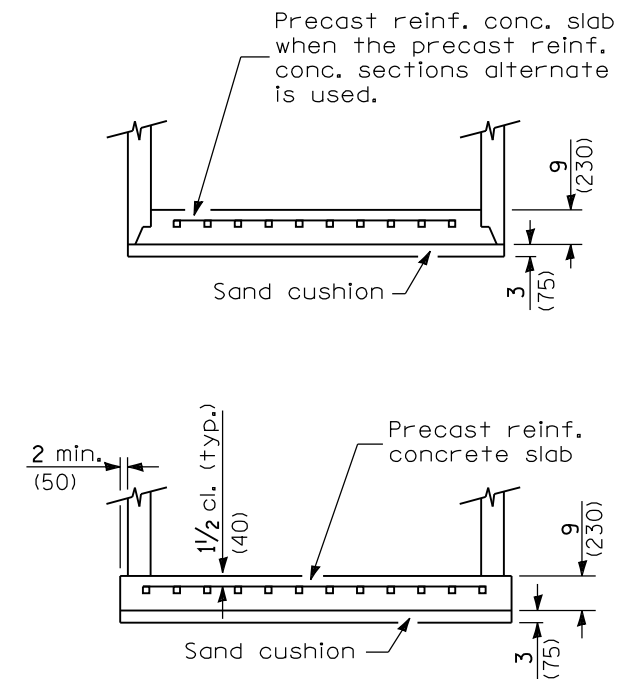
ELEVATION

(With Flat Slab Top Only)



ELEVATION

(With Flat Slab Top and Riser)



ALTERNATE BOTTOM SLABS

GENERAL NOTES

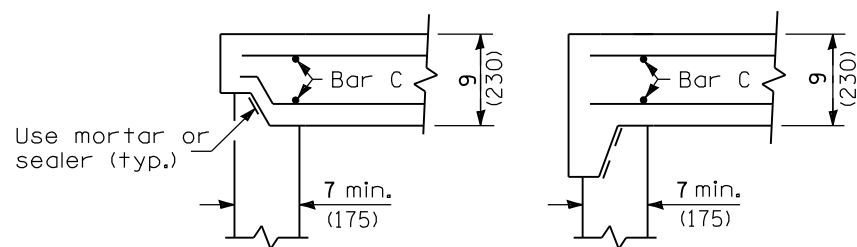
Joint configuration and dimensions of flat slab top shall match and fit the riser joint detail.

Lifting devices shall be approved by the Engineer.

Bottom slabs shall be reinforced with a minimum of 0.60 sq. in./ft. (1270 sq. mm/m) in both directions.

See Standard 602701 for details of manhole steps.

All dimensions are in inches (millimeters) unless otherwise shown.



ALTERNATE JOINT CONFIGURATIONS

ALTERNATE MATERIALS FOR RISER WALLS	T (min)
Concrete Masonry Units	5 (125)
Precast Reinforced Concrete Sections	4 (100)
Cast-in-Place Concrete	6 (150)

DATE	REVISIONS
1-1-09	Switched units to English (metric).
4-1-06	New standard.

MANHOLE TYPE A
7' (2.1 m) DIAMETER
(Sheet 1 of 2)

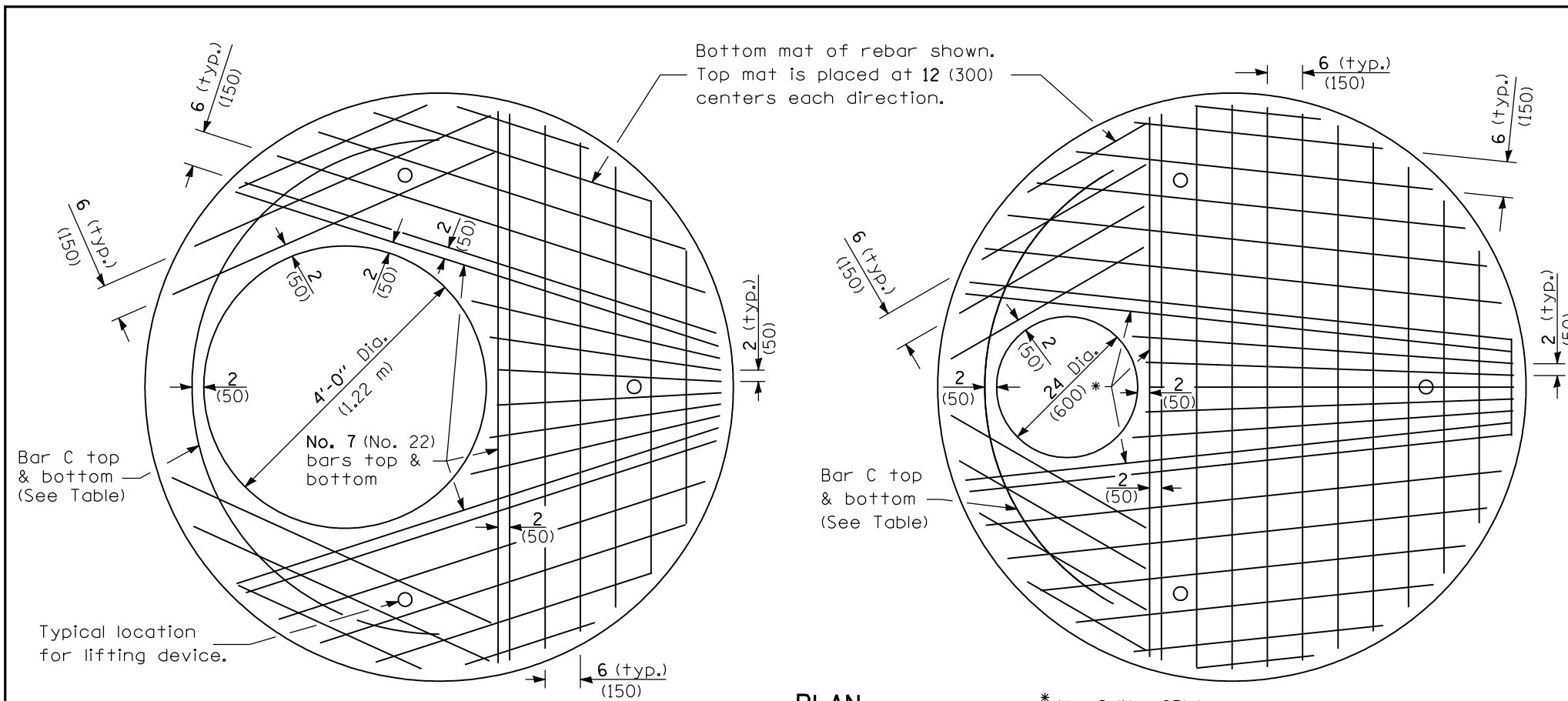
STANDARD 602411-01

Illinois Department of Transportation

PASSED January 1, 2009
ENGINEER OF POLICY AND PROCEDURES

APPROVED January 1, 2009
ENGINEER OF DESIGN AND ENVIRONMENT

ISSUED 4-1-06

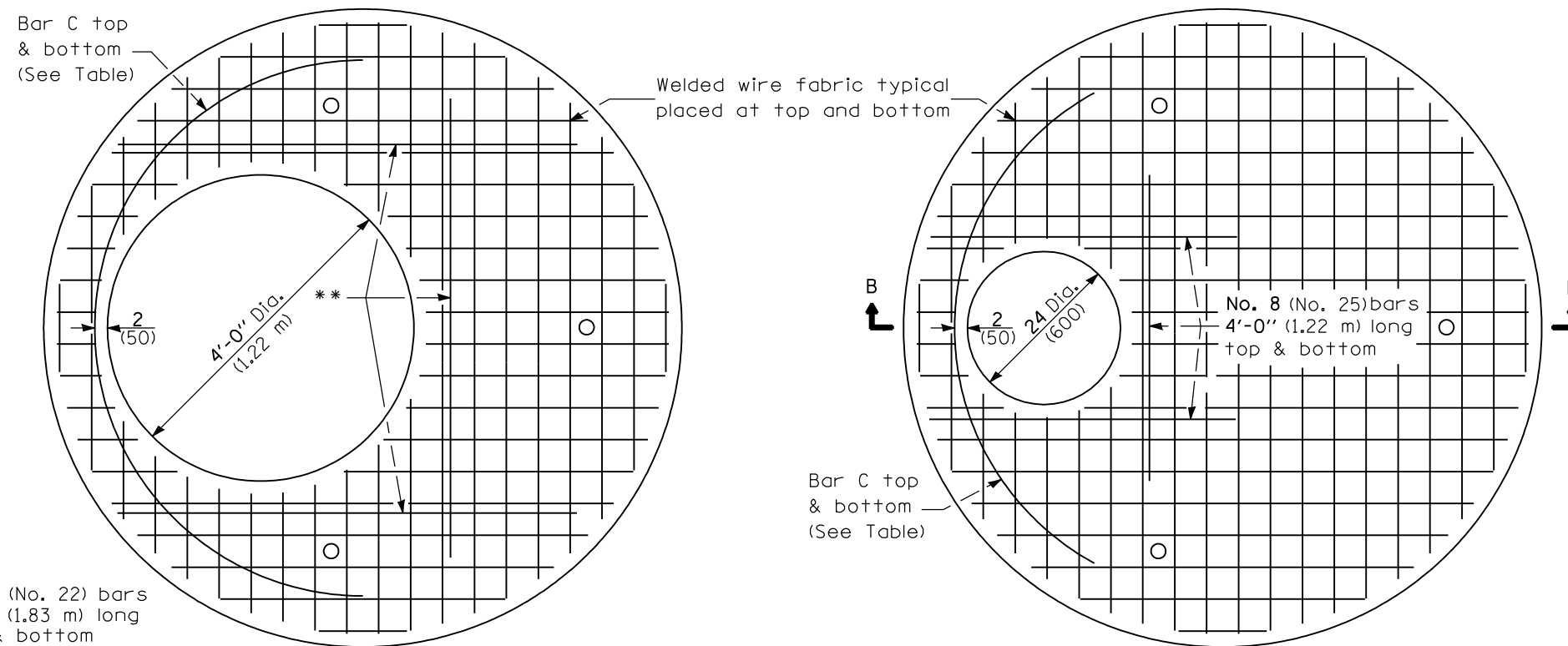


PLAN
Showing Rebar Reinforcement

* No. 8 (No. 25) bars top & bottom

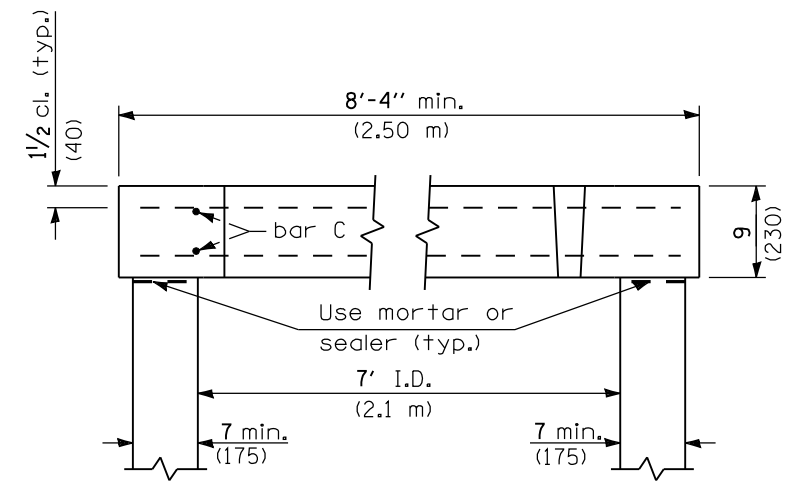
Diameter of opening	Reinforcement Bar Size	Reinforcement "As" WWF each direction	No. 4 (No. 13) Bar C	
			Length	Radius
24 (600)	Bottom mat No. 8 (No. 25)	Bottom mat *** 1.57 sq. in./ft. (3325 sq. mm/m)	7'-6" (2.30 m)	3'-6" (1.067 m)
	Top mat No. 4 (No. 13)	Top mat *** 0.20 sq. in./ft. (425 sq. mm/m)		
4'-0" (1.2 m)	Bottom mat No. 7 (No. 22)	Bottom mat *** 1.20 sq. in./ft. (2540 sq. mm/m)	11'-0" (3.35 m)	3'-6" (1.067 m)
	Top mat No. 4 (No. 13)	Top mat *** 0.20 sq. in./ft. (425 sq. mm/m)		

*** A maximum of two layers of welded wire fabric may be used to satisfy the required "As" for each mat.



** No. 7 (No. 22) bars 6'-0" (1.83 m) long top & bottom

PLAN
Showing Welded Wire Fabric Reinforcement



SECTION B-B
(Typical of each top)

Illinois Department of Transportation

PASSED January 1, 2009

ENGINEER OF POLICY AND PROCEDURES

APPROVED January 1, 2009

ENGINEER OF DESIGN AND ENVIRONMENT

ISSUED 4-1-06

MANHOLE TYPE A
7' (2.1 m) DIAMETER

(Sheet 2 of 2)

STANDARD 602411-01