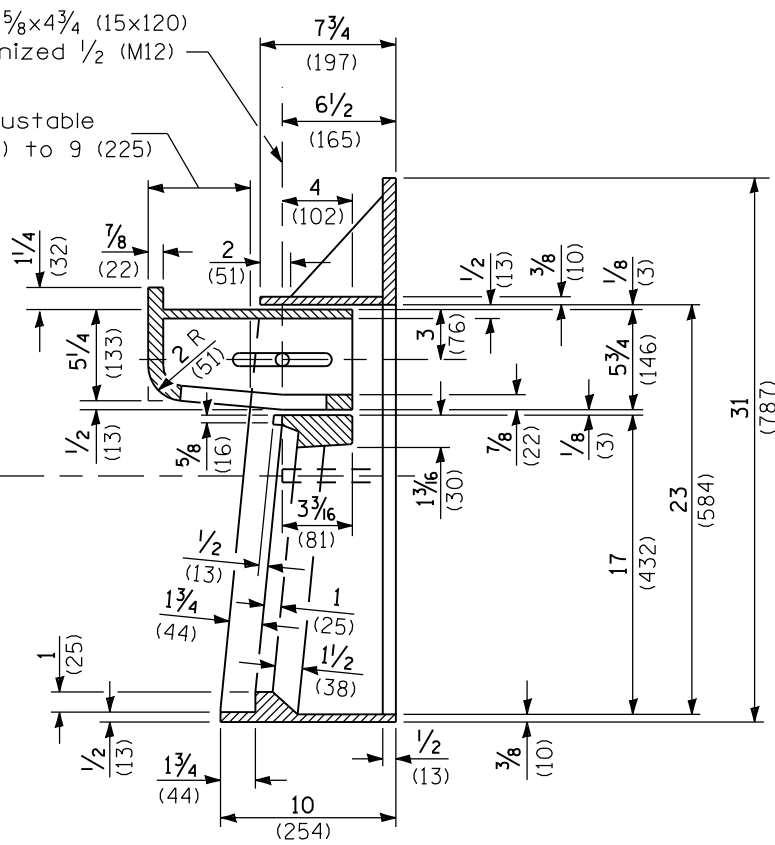


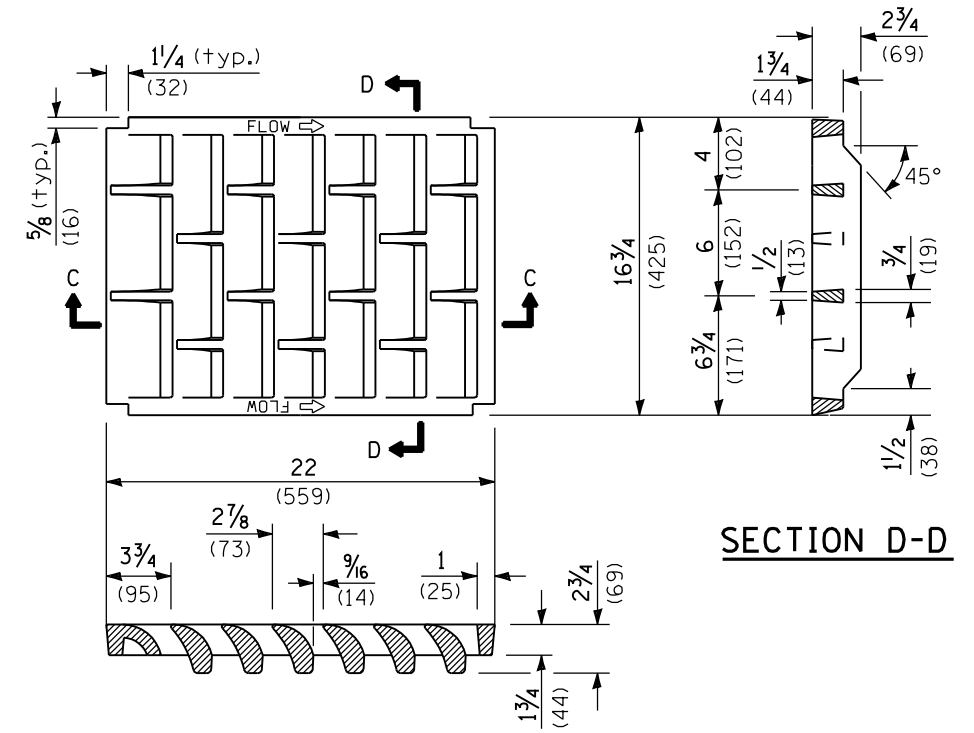
CAST FRAME

⌀ 5/8 (15) dia. hole and 5/8x4 3/4 (15x120) slotted hole for galvanized 1/2 (M12) bolt, nut and washer.

Curb box adjustable from 5 1/4 (135) to 9 (225)



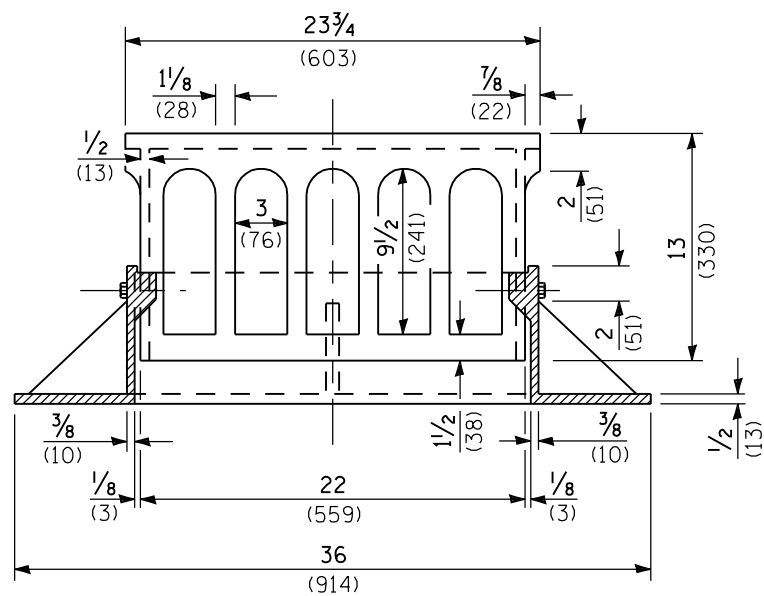
SECTION B-B



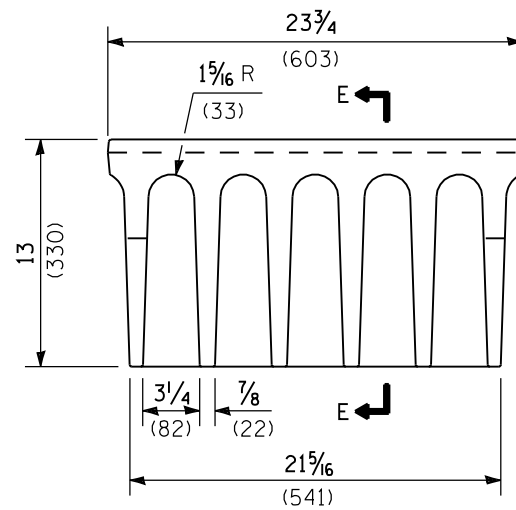
SECTION C-C

SECTION D-D

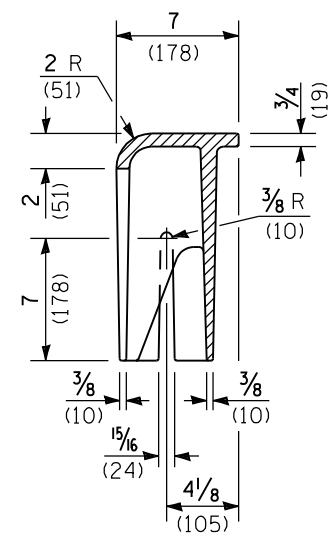
CAST GRATE



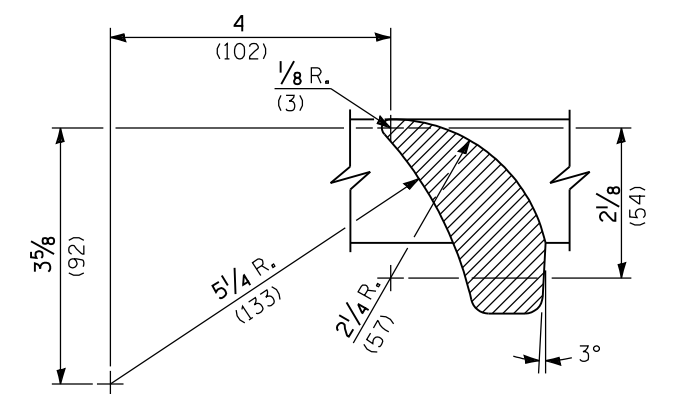
SECTION A-A



ALTERNATE CURB BOX



SECTION E-E



VANE DETAIL

All dimensions are in inches (millimeters) unless otherwise shown.

Illinois Department of Transportation
 PASSED January 1, 2009
 ENGINEER OF POLICY AND PROCEDURES
 APPROVED January 1, 2009
 ENGINEER OF DESIGN AND ENVIRONMENT

DATE	REVISIONS
1-1-09	Switched units to English (metric).
1-1-08	Added alternate curb box.

**FRAME AND GRATE
TYPE 3V**

STANDARD 604011-04