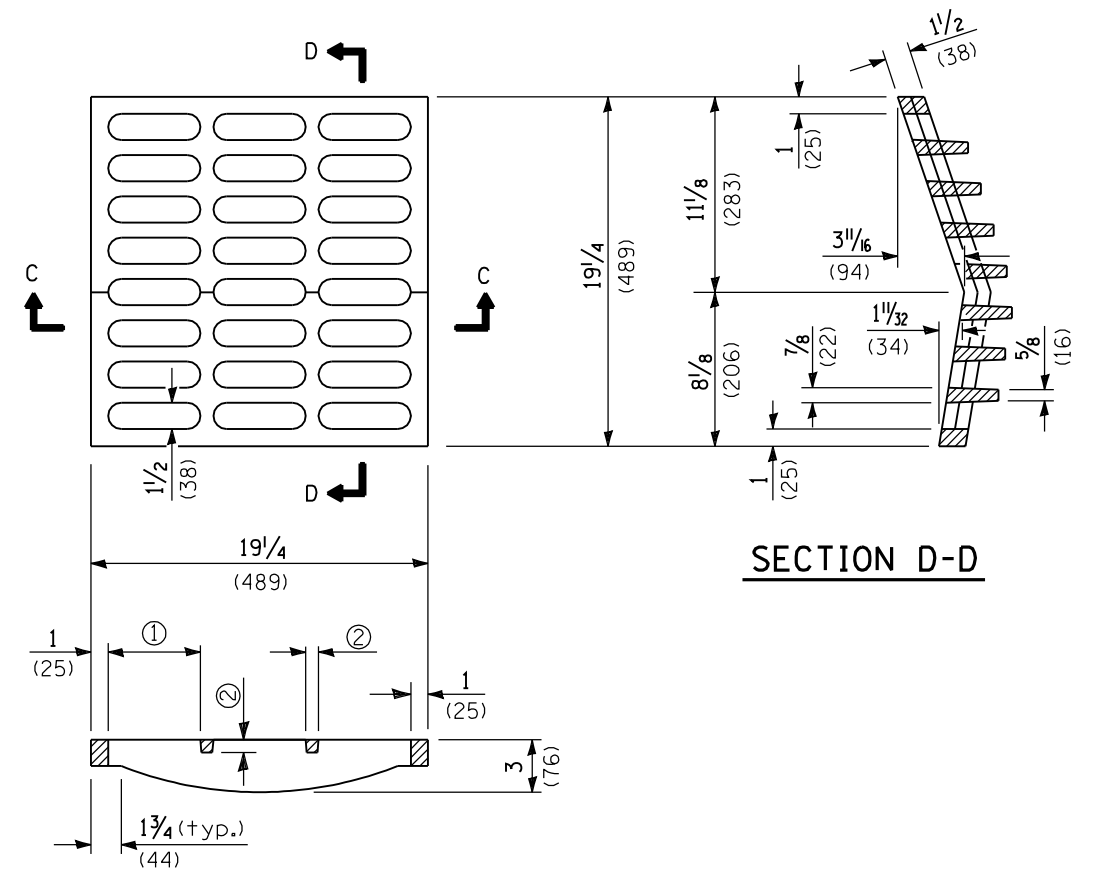


SECTION A-A

SECTION B-B



SECTION C-C

SECTION D-D

- ① = 6/4 (159) max. (typ.)
- ② = 3/4 (19) min. (typ.)

CAST GRATE

CAST FRAME

All dimensions are in inches (millimeters) unless otherwise shown.

DATE	REVISIONS
1-1-09	Switched units to English (metric).
1-1-04	Removed weights.

**FRAME AND GRATE
TYPE 10**

STANDARD 604046-02

Illinois Department of Transportation

PASSED January 1, 2009

ENGINEER OF POLICY AND PROCEDURES

APPROVED January 1, 2009

ENGINEER OF DESIGN AND ENVIRONMENT

ISSUED 1-1-07