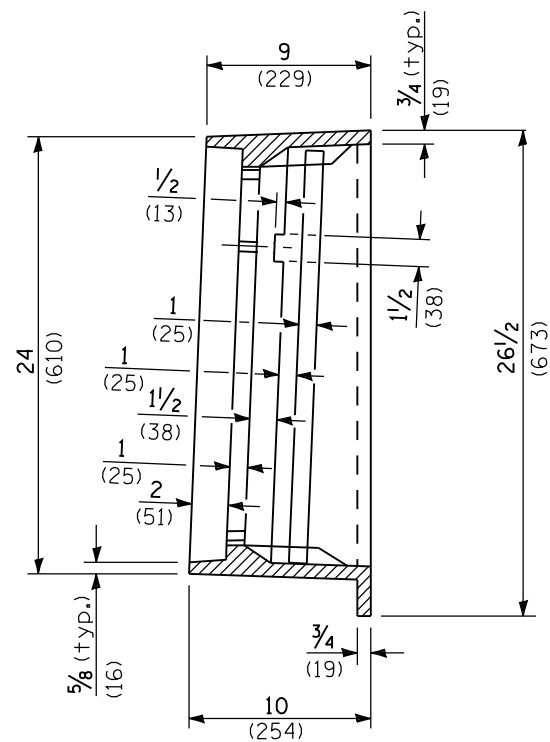
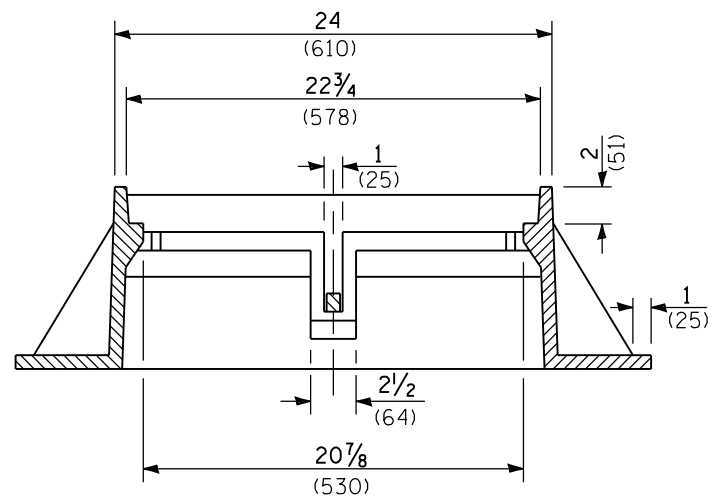


PLAN

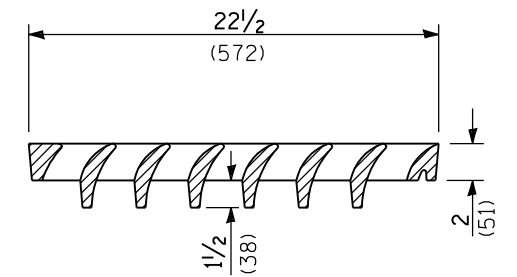


SECTION B-B

CAST FRAME

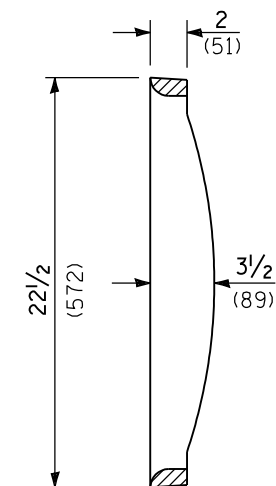


SECTION A-A

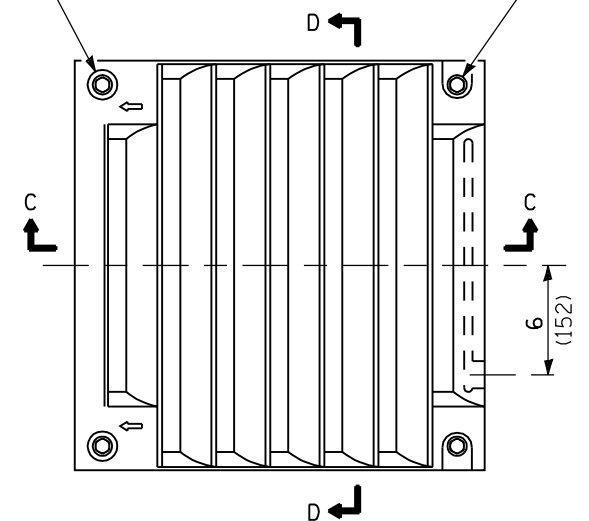


SECTION C-C

1/2 (13) Dia. stainless steel bolts with washers, through counter bored holes or slots, four places.



SECTION D-D



CAST GRATE

All dimensions are in inches (millimeters) unless otherwise shown.

| DATE | REVISIONS |
|--------|--|
| 1-1-09 | Switched units to English (metric). |
| 1-1-07 | Revised frame flanges, changed to a bolt down grate w/ deeper vanes. |

FRAME AND GRATE
TYPE 20

STANDARD 604071-04

Illinois Department of Transportation

PASSED January 1, 2009

ENGINEER OF POLICY AND PROCEDURES

APPROVED January 1, 2009

ENGINEER OF DESIGN AND ENVIRONMENT

ISSUED 1-1-07