

GENERAL NOTES

Tie bars shall be No. 6 (No. 19) at 24 (600) centers unless otherwise shown.

Gutter outlet shall be tied to the pavement in accordance with details for longitudinal construction joint shown on Standard 420001.

If the average grade of pavement for the distance from Section A-A to D-D exceeds 2%, this distance shall be increased 6' (1.8 m) for each 1% increase in grade.

All dimensions are in inches (millimeters) unless otherwise shown.

QUANTITIES

For Section A-A to E-E and curtain wall =
 2.38 cu. yds. (1.82 m³) concrete for 9 (225) pav't.
 2.41 cu. yds. (1.84 m³) concrete for 10 (250) pav't.

For Section F-F =
 0.069 cu. yds. (0.17 m³) concrete per ft. (m)

DATE	REVISIONS
1-1-09	Switched units to English (metric).
1-1-07	Soft converted metric rebars. Rem. weights of grates and cover.

OUTLETS FOR CONC. CURB AND GUTTER
TYPE B-6.24 (B-15.60)
 (Sheet 1 of 2)

STANDARD 606006-02

STANDARD OUTLET

Illinois Department of Transportation

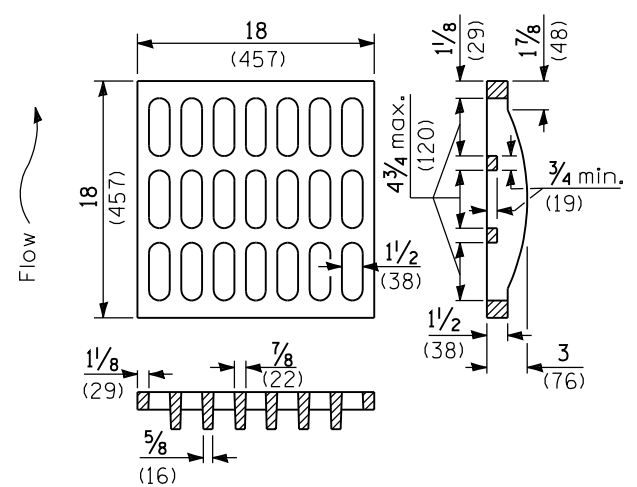
PASSED January 1, 2009

ENGINEER OF POLICY AND PROCEDURES

APPROVED January 1, 2009

ENGINEER OF DESIGN AND ENVIRONMENT

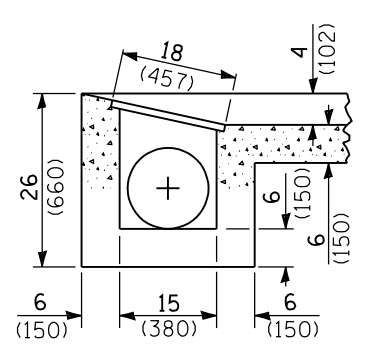
ISSUED 1-1-07



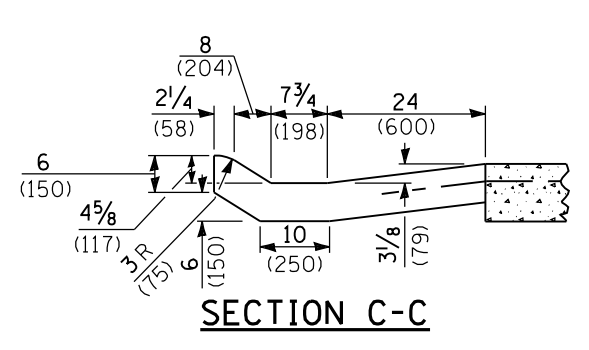
GRATE TYPE A

QUANTITIES

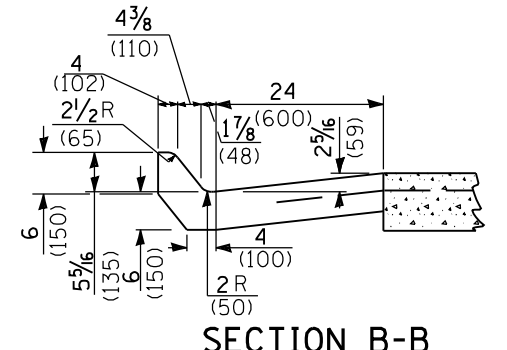
1.98 cu. yds. (1.51 m³) concrete for 9 (225) pav't.
 2.01 cu. yds. (1.54 m³) concrete for 10 (250) pav't.



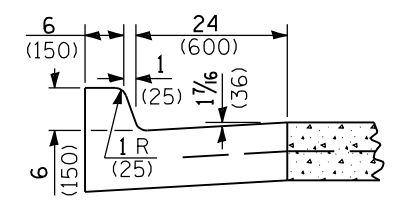
SECTION E-E



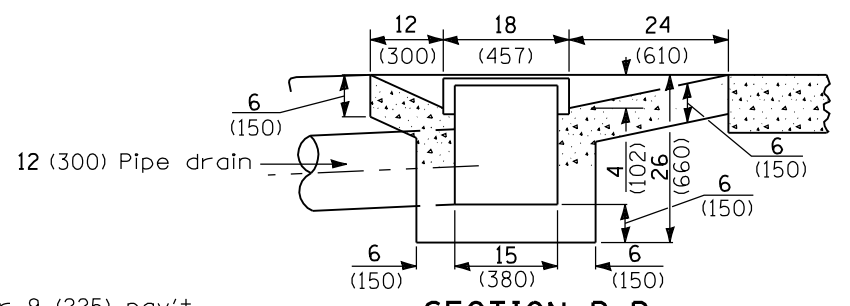
SECTION C-C



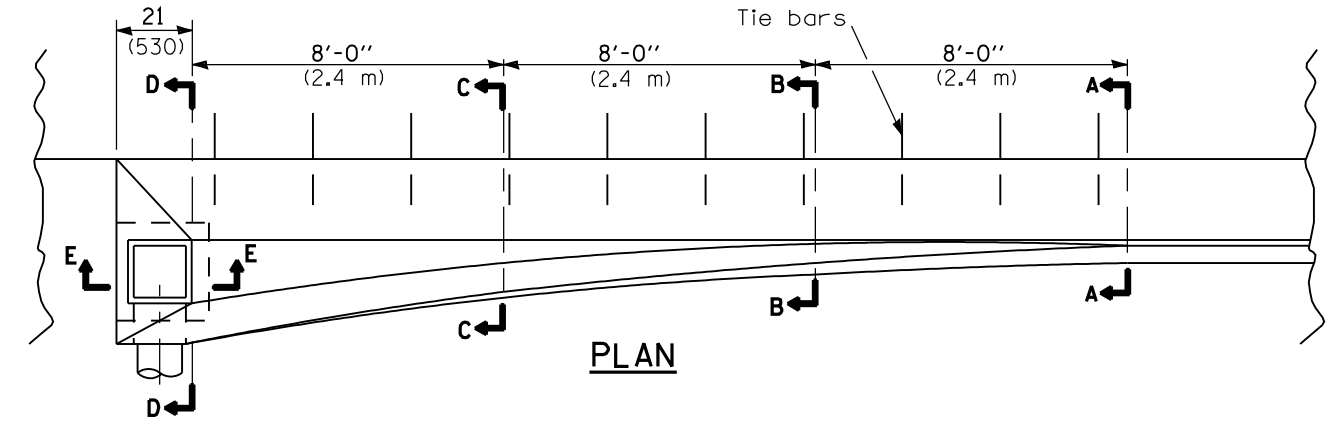
SECTION B-B



SECTION A-A

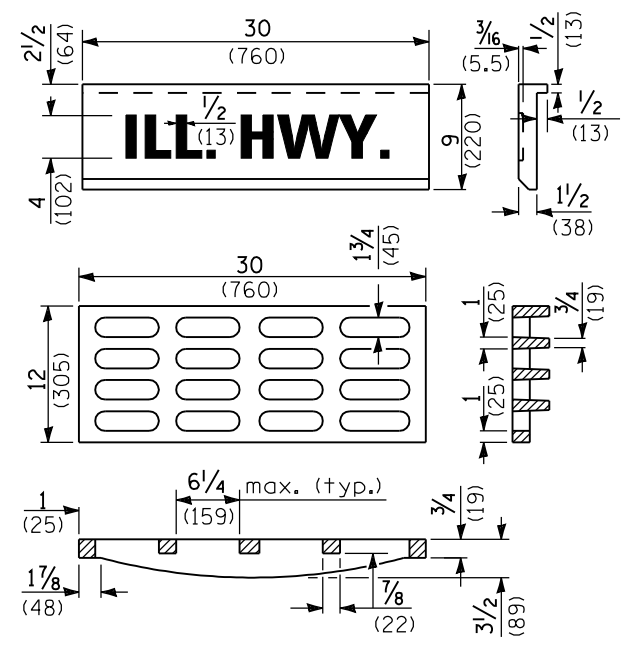


SECTION D-D

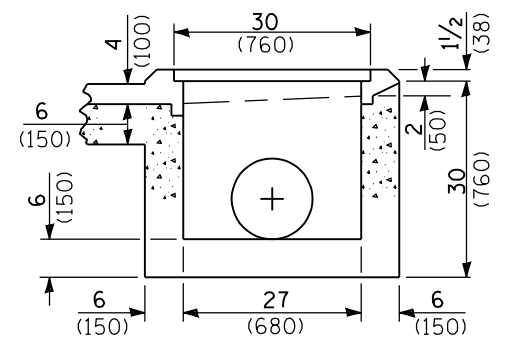


PLAN

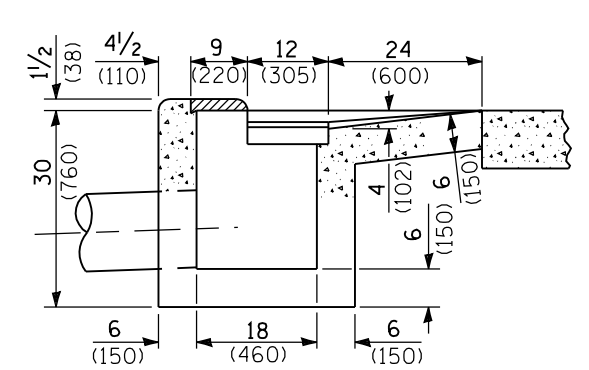
TYPE 1 OUTLET



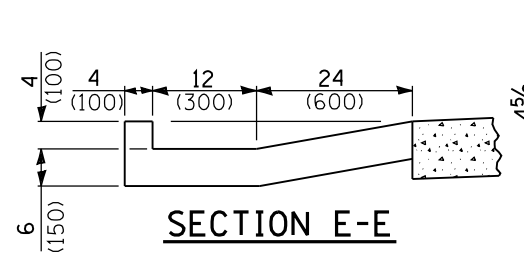
GRATE AND COVER TYPE 2B



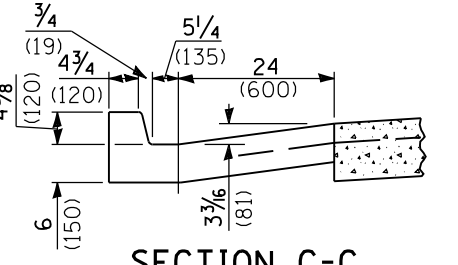
SECTION F-F



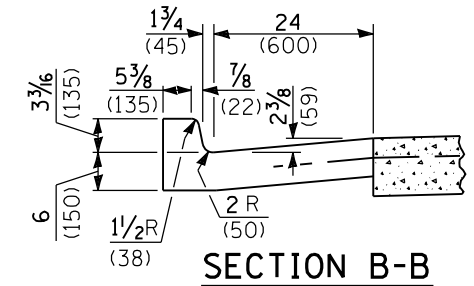
SECTION D-D



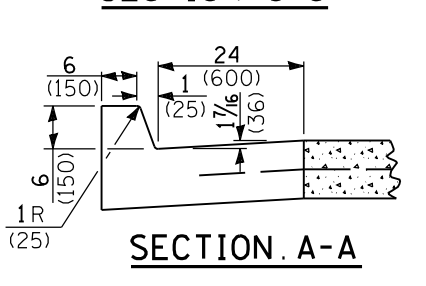
SECTION E-E



SECTION C-C



SECTION B-B

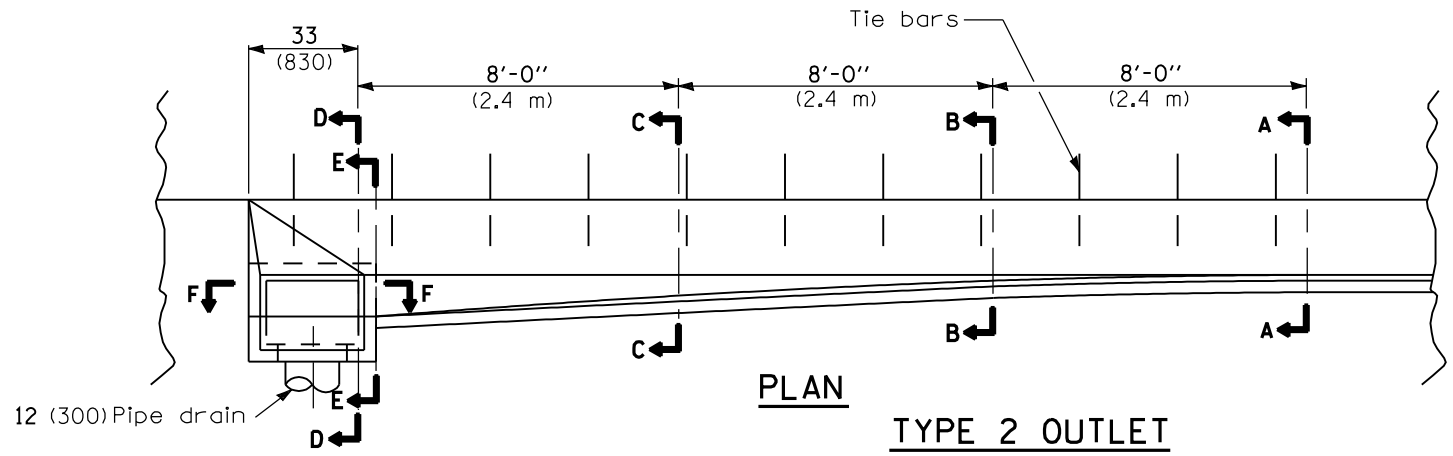


SECTION A-A

QUANTITIES

2.07 cu. yds. (1.58 m³) concrete for 9 (225) pav't.
 2.07 cu. yds. (1.60 m³) concrete for 10 (250) pav't.

All dimensions are in inches (millimeters) unless otherwise shown.



PLAN

TYPE 2 OUTLET

OUTLETS FOR CONC. CURB AND GUTTER TYPE B-6.24 (B-15.60)
 (Sheet 2 of 2)
STANDARD 606006-02

Illinois Department of Transportation
 PASSED January 1, 2009
 ENGINEER OF POLICY AND PROCEDURES
 APPROVED January 1, 2009
 ENGINEER OF DESIGN AND ENVIRONMENT