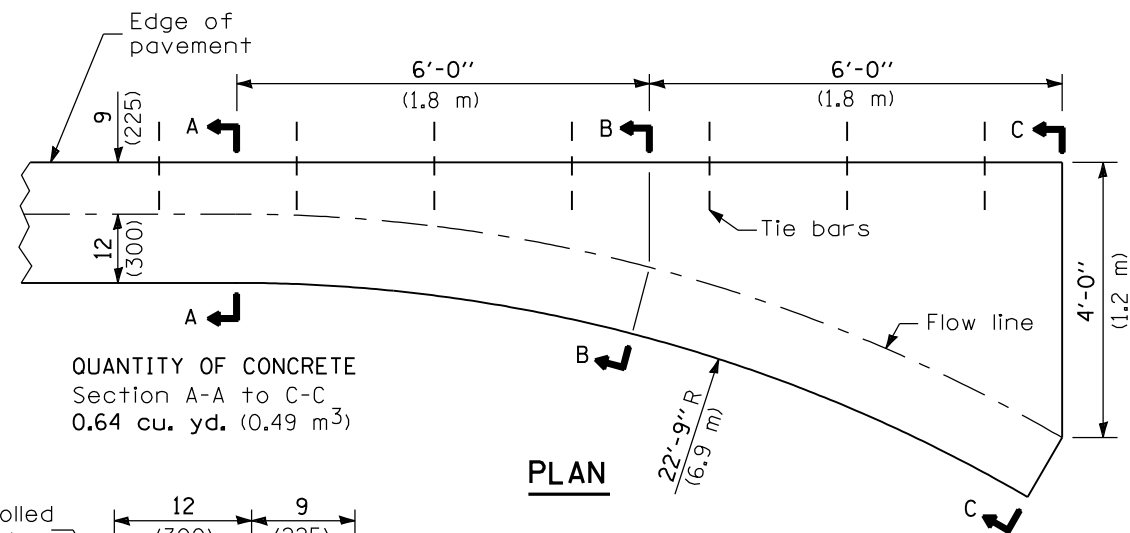
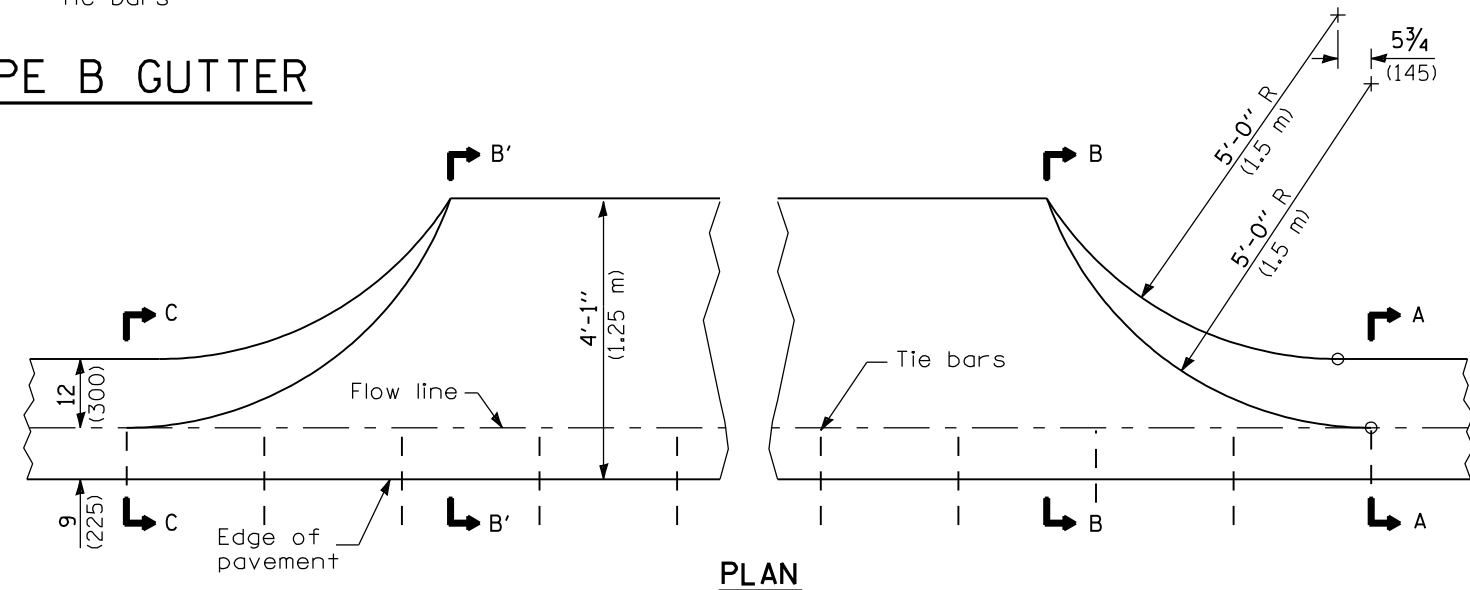


TYPE B GUTTER



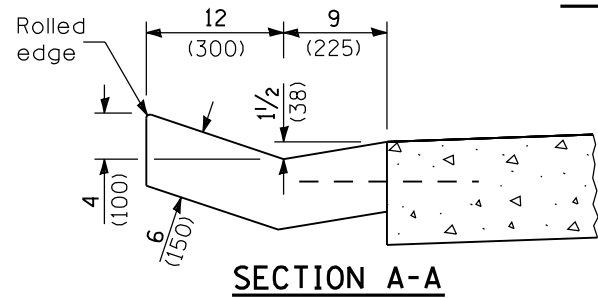
QUANTITY OF CONCRETE
Section A-A to C-C
0.64 cu. yd. (0.49 m³)

PLAN

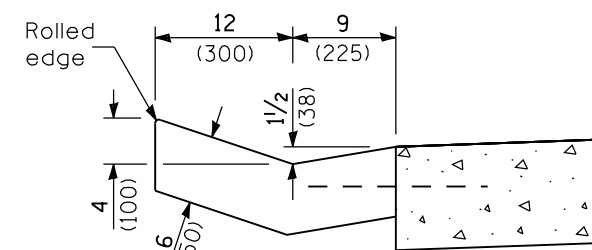


PLAN

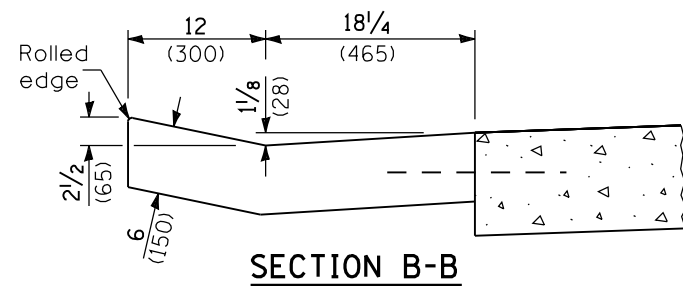
QUANTITY OF CONCRETE
Section B'-B' to B-B = 0.076 cu. yd./ft. (0.19 m³/m)
Section (C-C to B'-B') + (B-B to A-A) = 0.44 cu. yd. (0.34 m³)



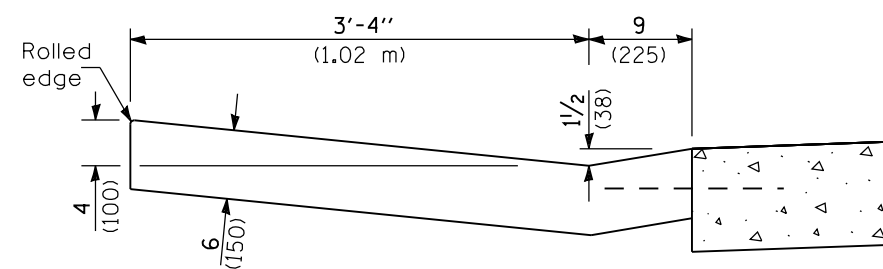
SECTION A-A



SECTIONS A-A & C-C

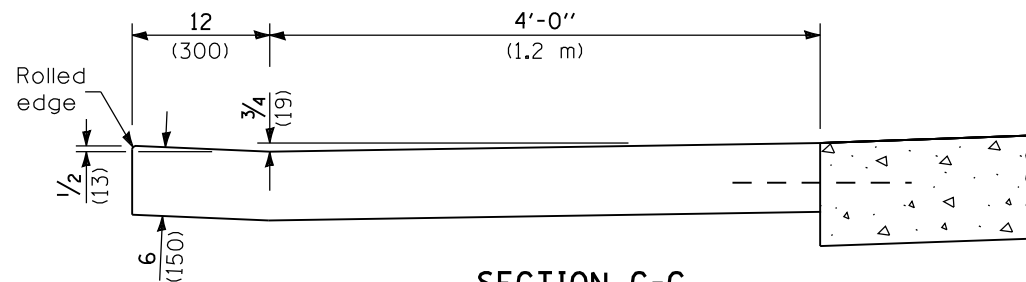


SECTION B-B



SECTIONS B-B & B'-B'

ENTRANCE



SECTION C-C

INLET

GENERAL NOTES

Tie bars shall be No. 6 (No. 19) at 24 (600) centers unless otherwise shown.

Gutter, gutter inlet, gutter outlet and gutter entrance shall be tied to the pavement in accordance with details for longitudinal construction joint shown on Standard 420001.

Two 1-1/4 x 18 (32 x 450) dowel bars shall be installed in all joints when the gutter is constructed adjacent to flexible pavement.

All dimensions are in inches (millimeters) unless otherwise shown.

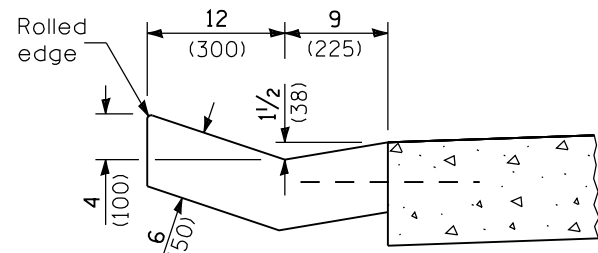
DATE	REVISIONS
1-1-09	Switched units to English (metric). Changed radii, adjusted qty's.
1-1-07	Soft converted metric reinforcement bars.

**TYPE B GUTTER
(INLET, OUTLET & ENTRANCE)**

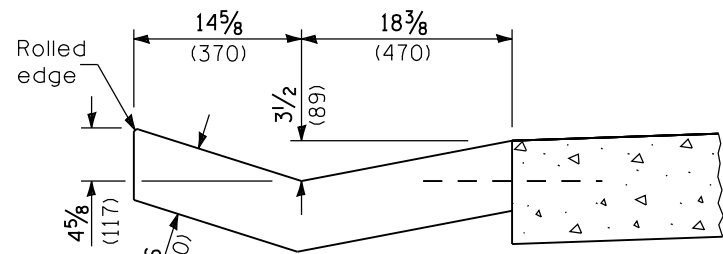
(Sheet 1 of 2)

STANDARD 606201-02

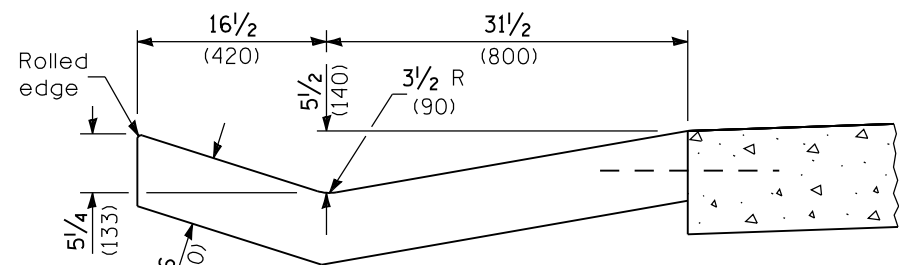
Illinois Department of Transportation
 PASSED January 1, 2009
 ENGINEER OF POLICY AND PROCEDURES
 APPROVED January 1, 2009
 ENGINEER OF DESIGN AND ENVIRONMENT



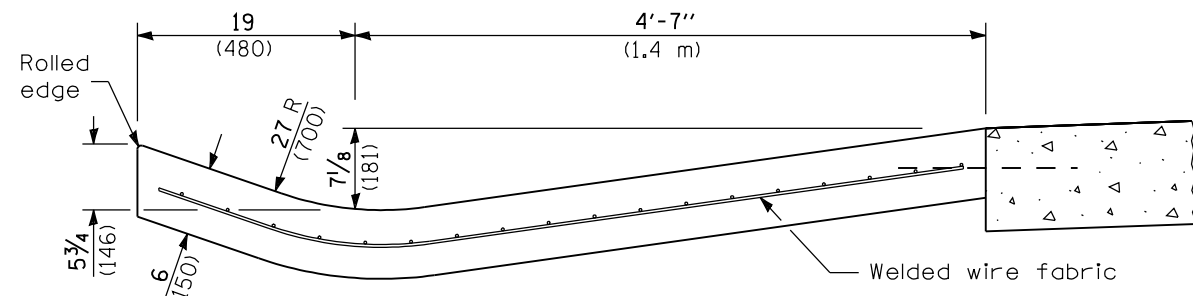
SECTION A-A



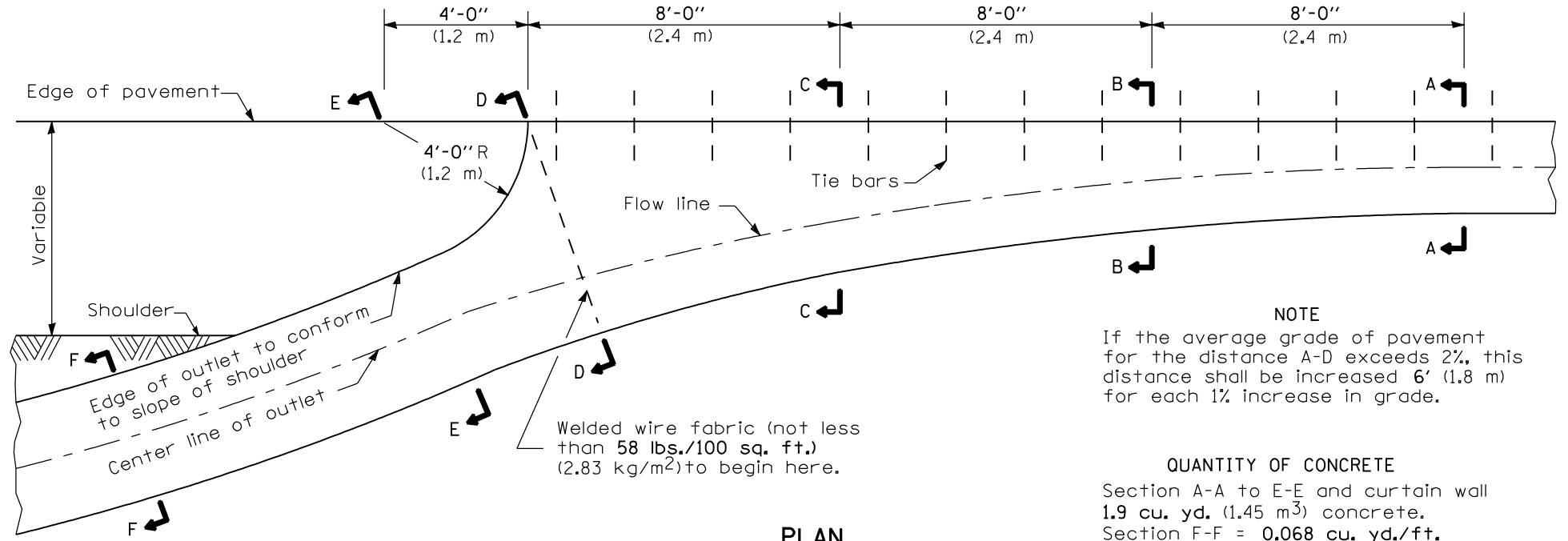
SECTION B-B



SECTION C-C



SECTION D-D

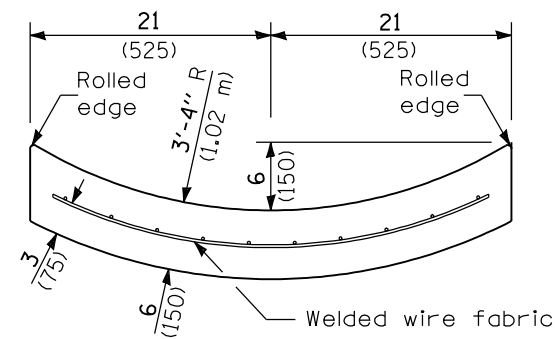


PLAN

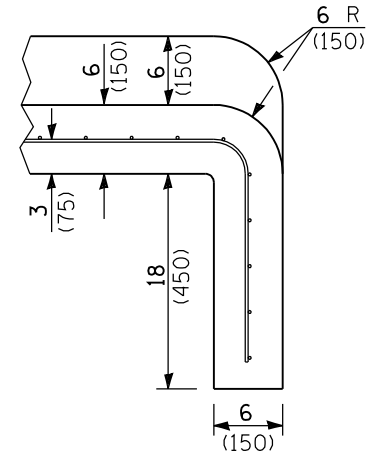
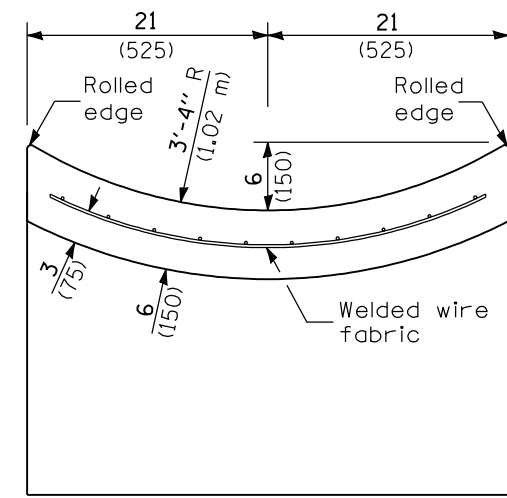
NOTE
If the average grade of pavement for the distance A-D exceeds 2%, this distance shall be increased 6' (1.8 m) for each 1% increase in grade.

QUANTITY OF CONCRETE
Section A-A to E-E and curtain wall
1.9 cu. yd. (1.45 m³) concrete.
Section F-F = 0.068 cu. yd./ft.
(0.17 m³/m).

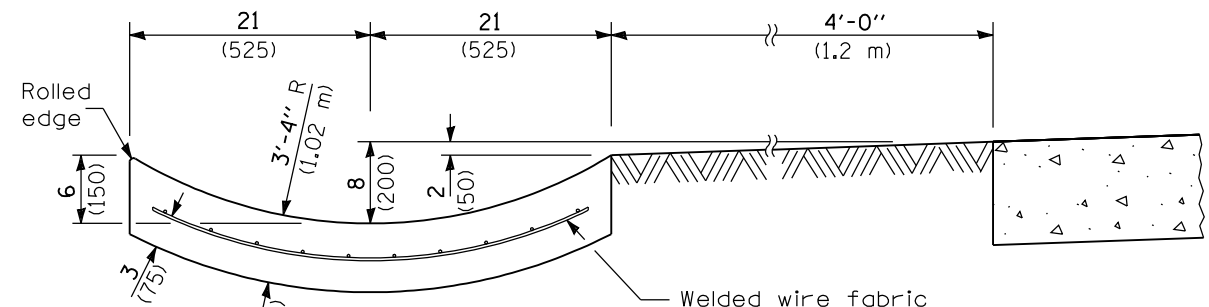
OUTLET



SECTION F-F



SECTIONS AT END OF OUTLET



SECTION E-E

Illinois Department of Transportation
 PASSED January 1, 2009
 ENGINEER OF POLICY AND PROCEDURES
 APPROVED January 1, 2009
 ENGINEER OF DESIGN AND ENVIRONMENT

**TYPE B GUTTER
 (INLET, OUTLET & ENTRANCE)**
 (Sheet 2 of 2)
STANDARD 606201-02