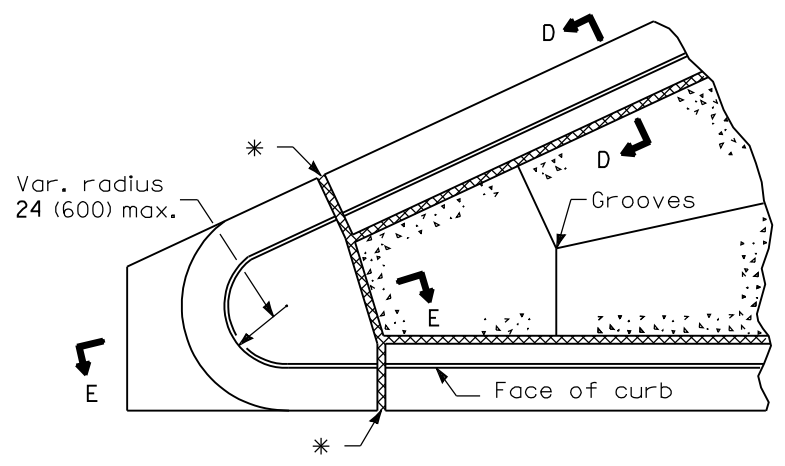
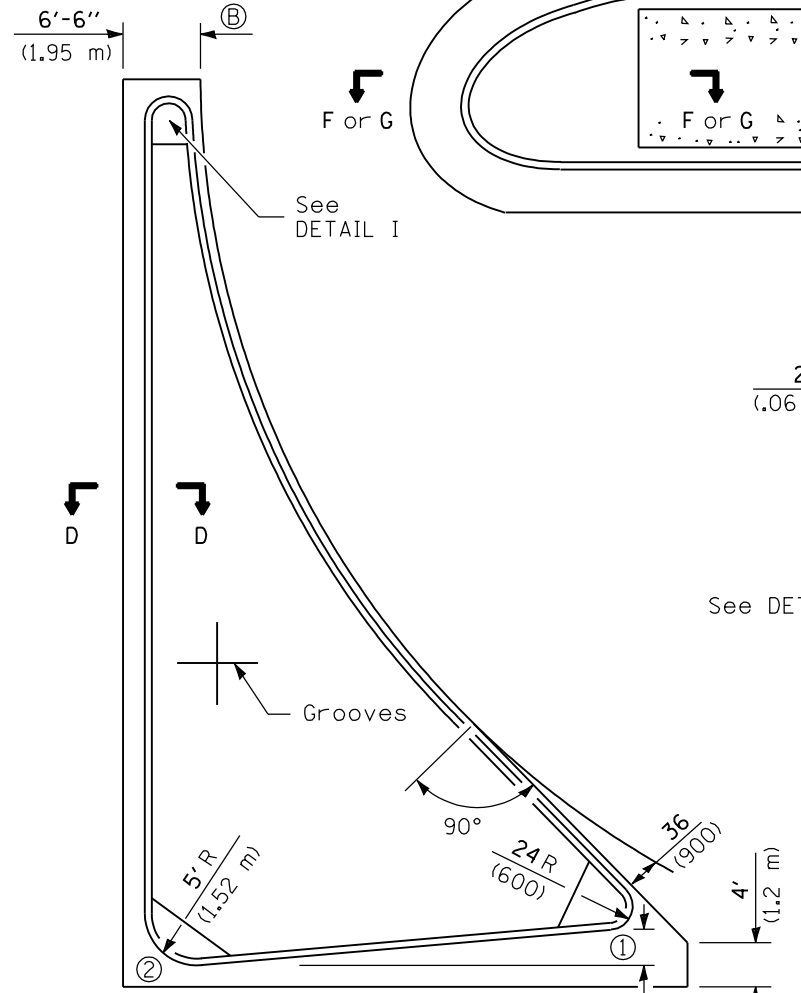


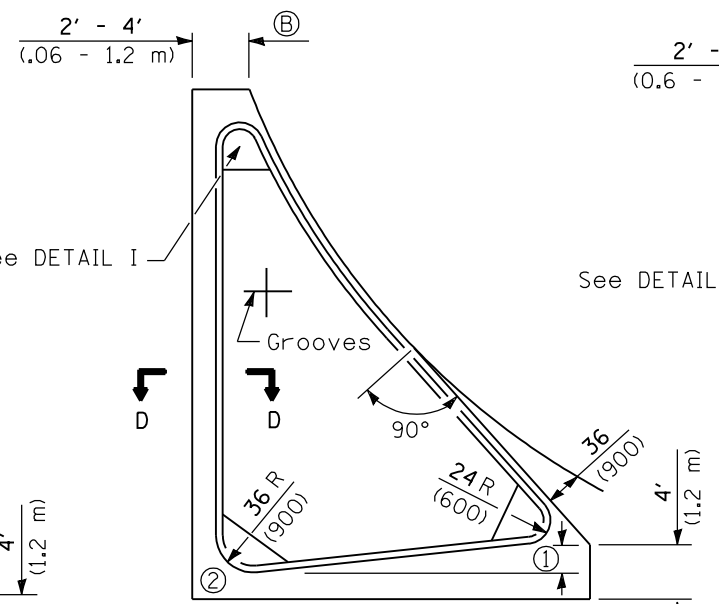
TYPICAL PLAN OF MEDIAN ISLAND
(SEE SHEET 2 FOR DETAILS OF RAMPED NOSES)



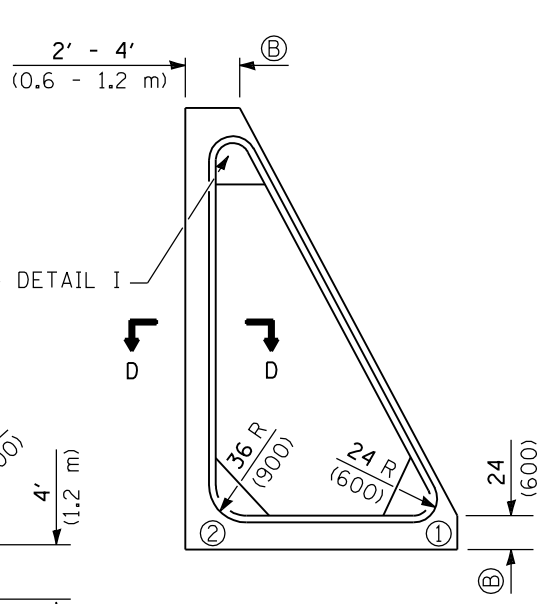
DETAIL I



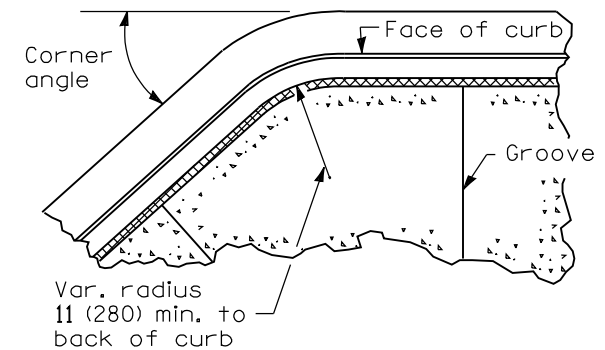
LARGE ISLAND
(FREE FLOW DESIGN)



INTERMEDIATE ISLAND
(FOR RIGHT TURN LANE DESIGN)



SMALL ISLAND



DETAIL II

Typical detail when corner angle is less than 90° and for other corners with radius greater than 24 (600).

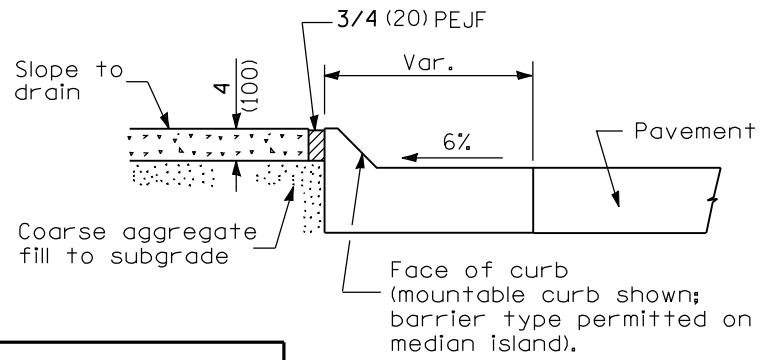
TYPICAL PLANS OF CORNER ISLANDS
(SEE SHEET 2 FOR DETAILS OF RAMPED NOSES)

NOTE

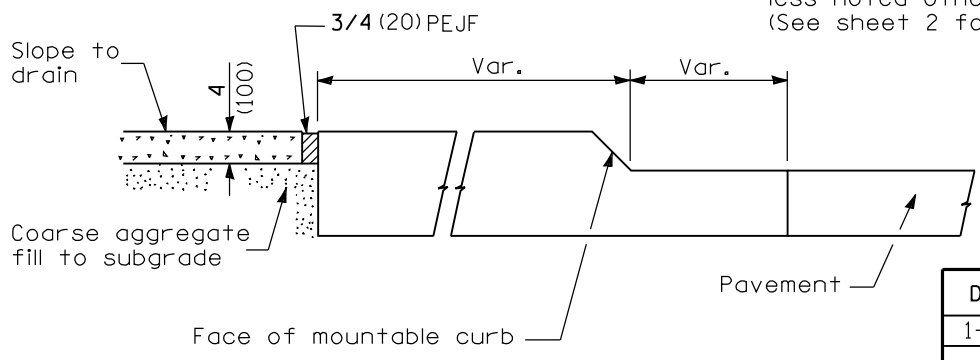
The blockouts ② for the islands shall be extended so that the termination will line up with proposed or existing pavement joint.
Nos ① and ② shall be ramped unless noted otherwise on the plans. (See sheet 2 for length)

GENERAL NOTES

- PEJF = Preformed expansion joint filler.
- Median layout and radii shall be as shown on the plans.
- Keyed longitudinal construction joints shall be constructed without tie bars.
- See Standard 420001 and 606001 for details not shown.
- * 3/4 (20) PEJF conforming to the full cross section of the curb, gutter and median surface.
- X = PCC base course plus HMA thickness.
- t = Pavement or pcc base course thickness.
- All dimensions are in inches (millimeters) unless otherwise shown.



SECTION D-D

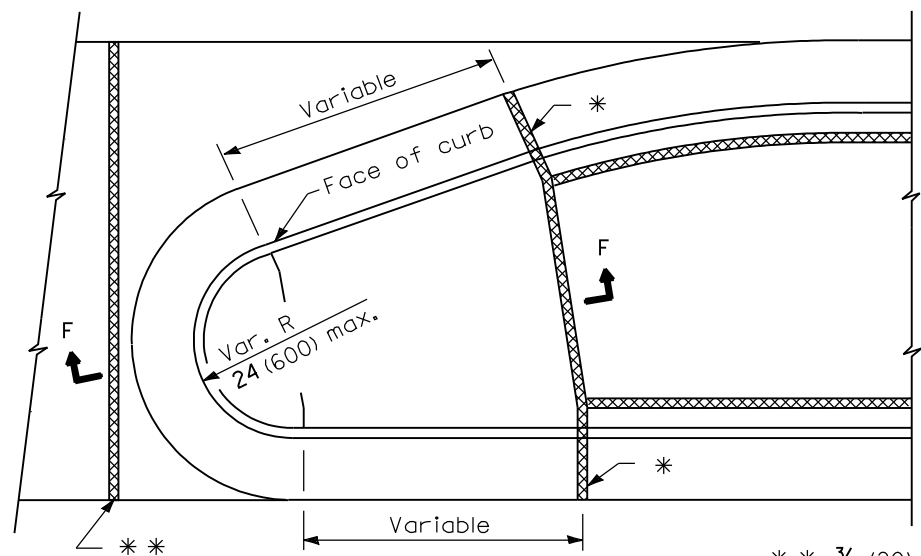


SECTION E-E

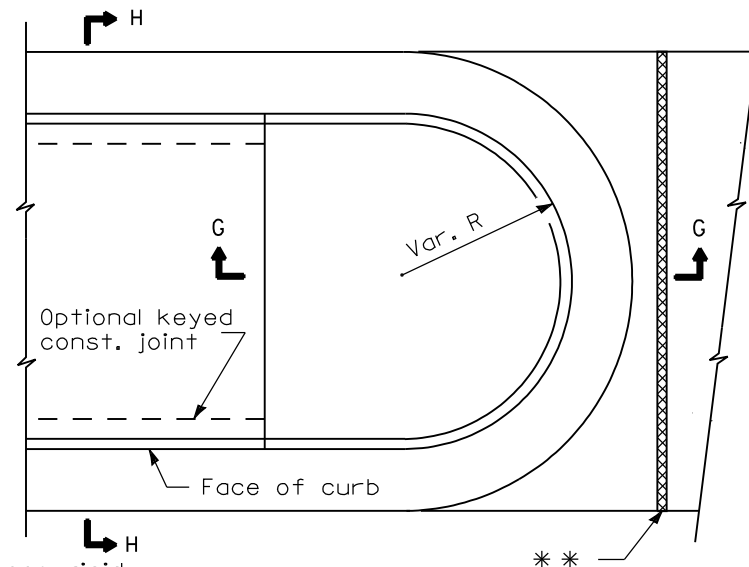
Illinois Department of Transportation
 PASSED January 1, 2009
 ENGINEER OF POLICY AND PROCEDURES
 APPROVED January 1, 2009
 ENGINEER OF DESIGN AND ENVIRONMENT

DATE	REVISIONS
1-1-09	Switched units to English (metric).
1-1-07	Switched to Hot-Mix Asphalt (HMA) terminology.

PC CONCRETE ISLANDS AND MEDIANS
 (Sheet 1 of 2)
STANDARD 606301-04



TYPE P MEDIAN SURFACE



SOLID MEDIAN

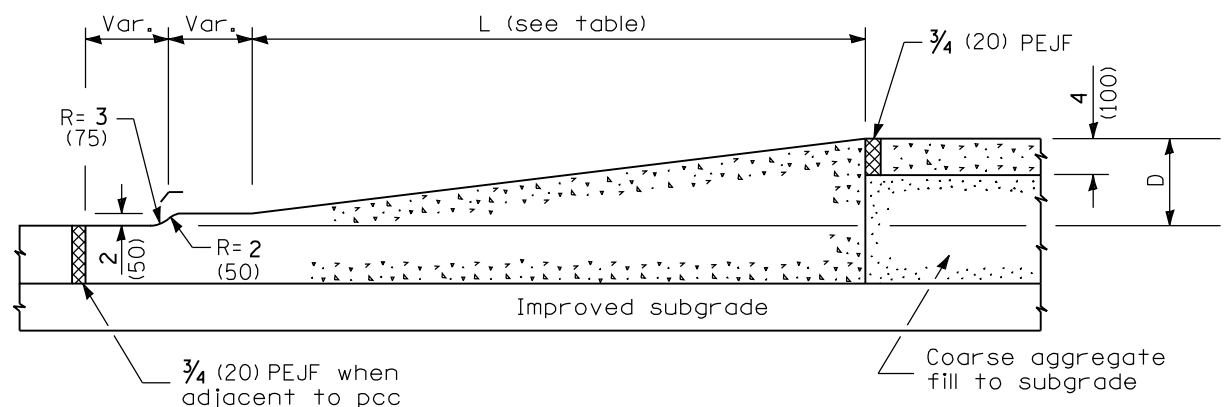
** $\frac{3}{4}$ (20) PEJF between rigid pavement and median end. Align with joint in adjacent pavement.

PLAN
(RAMPED NOSES)

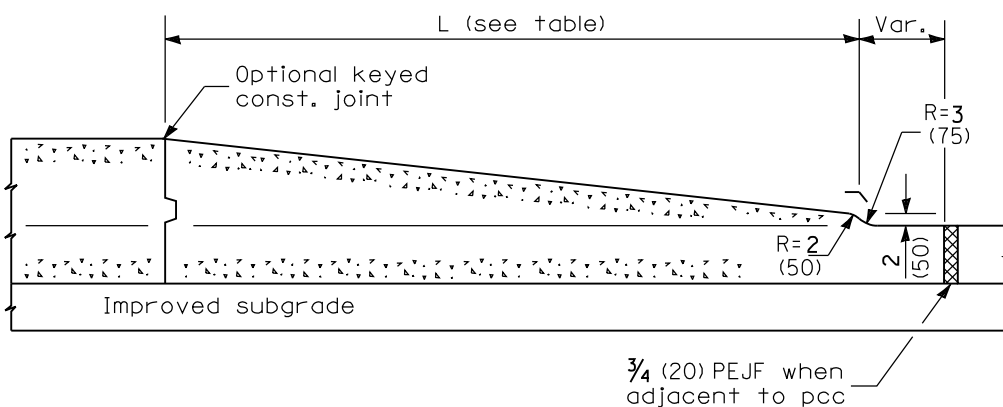
TABLE OF DIMENSIONS					
TYPE SB MEDIANS					
TYPE	A	B	C	D	R ₁
SB-6.06 (SB-15.15)	6 (150)	1 (25)	6 (150)	6 (150)	1 (25)
SB-6.12 (SB-15.30)	12 (300)	1 (25)	6 (150)	6 (150)	1 (25)
SB-6.18 (SB-15.45)	18 (450)	1 (25)	6 (150)	6 (150)	1 (25)
SB-6.24 (SB-15.60)	24 (600)	1 (25)	6 (150)	6 (150)	1 (25)
SB-9.06 (SB-22.15)	6 (150)	2 (50)	5 (125)	9 (225)	1 (25)
SB-9.12 (SB-22.30)	12 (300)	2 (50)	5 (125)	9 (225)	1 (25)
SB-9.18 (SB-22.45)	18 (450)	2 (50)	5 (125)	9 (225)	1 (25)
SB-9.24 (SB-22.60)	24 (600)	2 (50)	5 (125)	9 (225)	1 (25)

TABLE OF DIMENSIONS					
TYPE M AND SM MEDIANS					
TYPE	A	B	C	D	R ₁
M-2.06 (M-5.15)	6 (150)	2 (50)	4 (100)	2 (50)	2 (50)
M-2.12 (M-5.30)	12 (300)	2 (50)	4 (100)	2 (50)	2 (50)
SM-4.06 (SM-10.15)	6 (150)	4 (100)	3 (75)	4 (100)	3 (75)
SM-4.12 (SM-10.30)	12 (300)	4 (100)	3 (75)	4 (100)	3 (75)
SM-4.18 (SM-10.45)	18 (450)	4 (100)	3 (75)	4 (100)	3 (75)
SM-4.24 (SM-10.60)	24 (600)	4 (100)	3 (75)	4 (100)	3 (75)
SM-6.06 (SM-15.15)	6 (150)	6 (150)	2 (50)	6 (150)	2 (50)
SM-6.12 (SM-15.30)	12 (300)	6 (150)	2 (50)	6 (150)	2 (50)
SM-6.18 (SM-15.45)	18 (450)	6 (150)	2 (50)	6 (150)	2 (50)
SM-6.24 (SM-15.60)	24 (600)	6 (150)	2 (50)	6 (150)	2 (50)

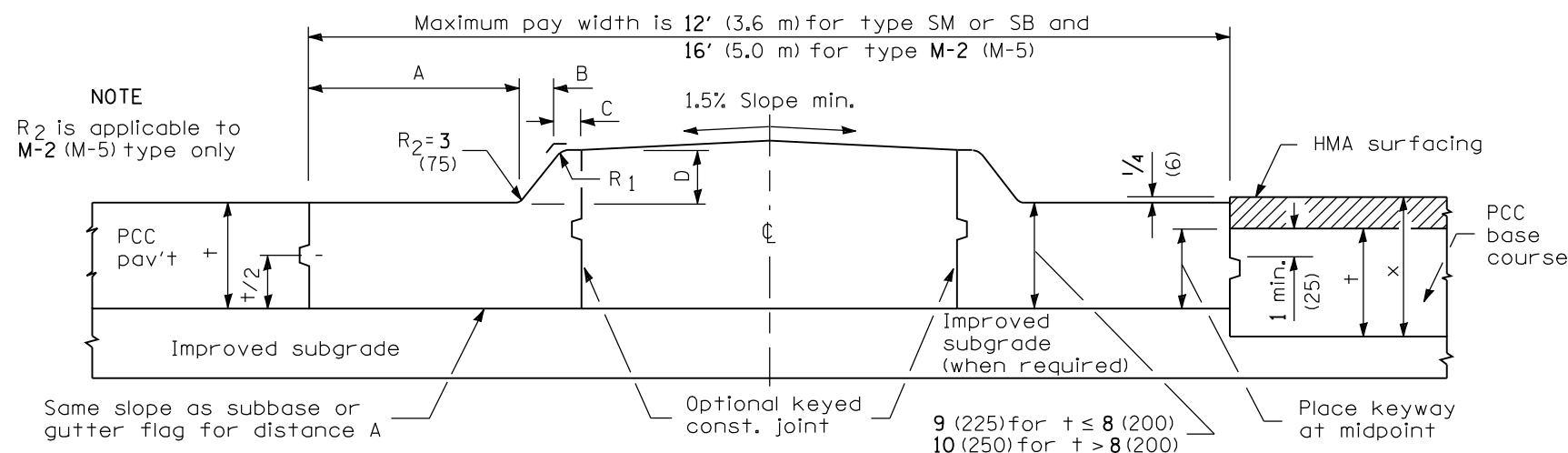
TABLE OF RAMPED NOSE LENGTHS	
TYPE OF NOSE	L
Median	6' (1.8 m)
Small Island	24 (600)
Intermediate Island	4' (1.2 m)
Large Island	6' (1.8 m)



SECTION F-F



SECTION G-G

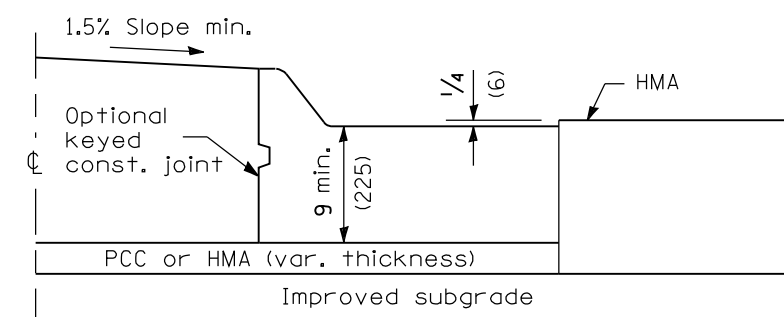


HALF SECTION FOR PCC PAVEMENT

HALF SECTION FOR PCC BASE COURSE

SECTION H-H

(TYPE SM, SB & M-5 (M-2) MEDIANS)



HALF SECTION FOR FLEXIBLE PAVEMENT

Illinois Department of Transportation

PASSED January 1, 2009

ENGINEER OF POLICY AND PROCEDURES

APPROVED January 1, 2009

ENGINEER OF DESIGN AND ENVIRONMENT

ISSUED 1-1-97

PC CONCRETE ISLANDS AND MEDIANS

(Sheet 2 of 2)

STANDARD 606301-04