

TABLE FOR PAVED DITCH TYPE A

TYPE	(D)	(W)	(X)	Flow Area sq. ft. (m <sup>2</sup> )	Conc. Area sq. yd. (m <sup>2</sup> )
A-15	6 (150)	5'-0" (1.5 m)	18 (450)	1.75 (0.175)	0.278 (0.225)
A-22	9 (225)	6'-6" (1.95 m)	27 (675)	3.19 (0.287)	0.361 (0.293)
A-30	12 (300)	8'-0" (2.4 m)	36 (900)	5.00 (0.450)	0.444 (0.360)
A-37	15 (375)	9'-6" (2.85 m)	3'-9" (1.12 m)	7.19 (0.645)	0.528 (0.426)
A-45	18 (450)	11'-0" (3.3 m)	4'-6" (1.35 m)	9.75 (0.877)	0.611 (0.495)
A-52	21 (525)	12'-6" (3.75 m)	5'-3" (1.58 m)	12.69 (1.144)	0.694 (0.564)
A-60	24 (600)	14'-0" (4.2 m)	6'-0" (1.8 m)	16.00 (1.440)	0.778 (0.630)

**PAVED DITCH TYPE A**

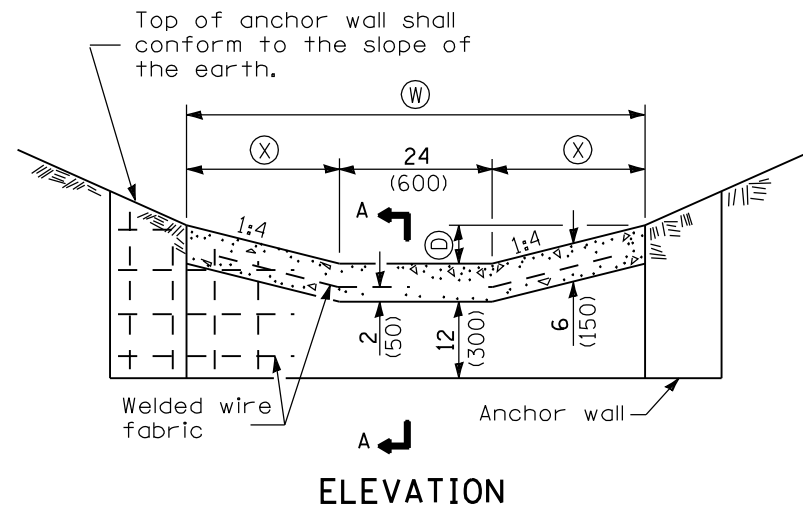
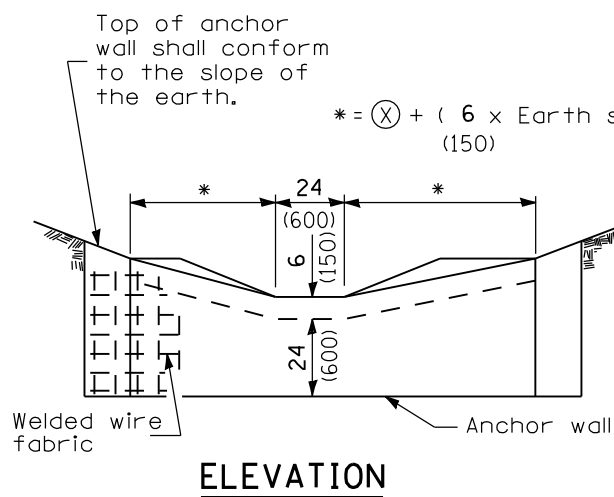


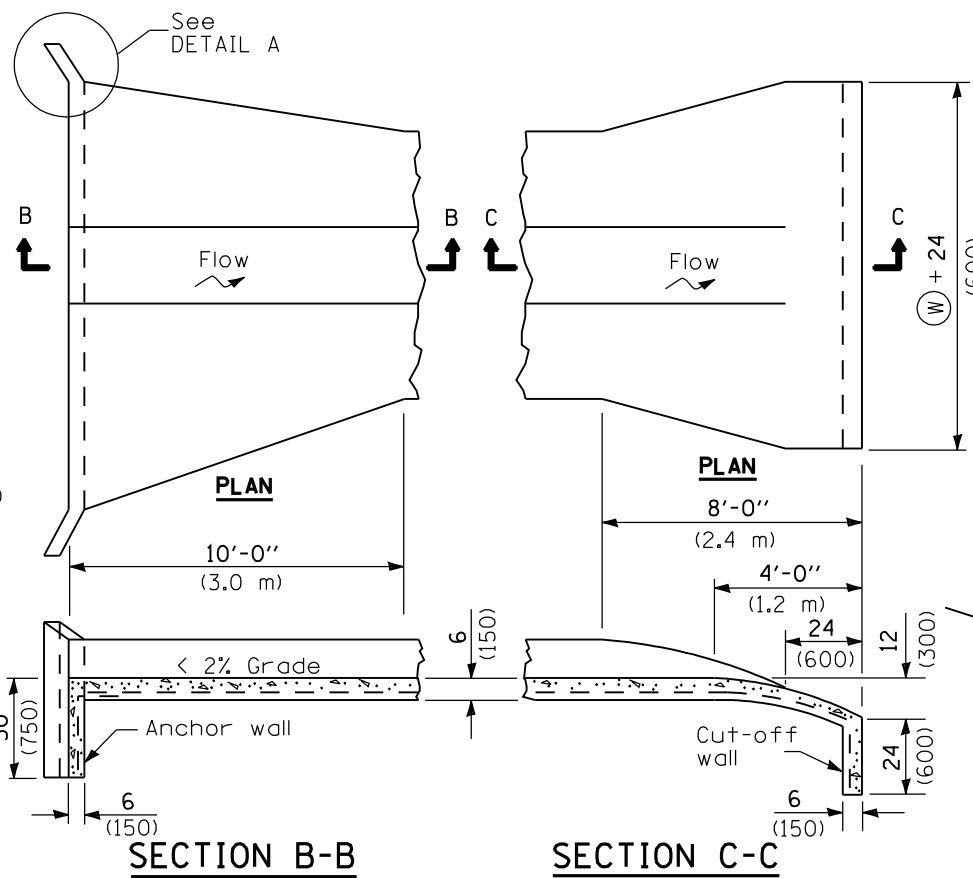
TABLE FOR PAVED DITCH TYPE B

TYPE	(D)	(W)	(X)	Flow Area sq. ft. (m <sup>2</sup> )	Conc. Area sq. yd. (m <sup>2</sup> )
B-15	6 (150)	6'-0" (1.8 m)	24 (600)	2.00 (0.180)	0.333 (0.270)
B-22	9 (225)	8'-0" (2.4 m)	36 (900)	3.75 (0.337)	0.444 (0.360)
B-30	12 (300)	10'-0" (3.0 m)	4'-0" (1.2 m)	6.00 (0.540)	0.555 (0.450)
B-37	15 (375)	12'-0" (3.6 m)	5'-0" (1.5 m)	8.75 (0.787)	0.667 (0.540)
B-45	18 (450)	14'-0" (4.2 m)	6'-0" (1.8 m)	12.00 (1.080)	0.778 (0.630)
B-52	21 (525)	16'-0" (4.8 m)	7'-0" (2.1 m)	15.75 (1.417)	0.889 (0.720)
B-60	24 (600)	18'-0" (5.4 m)	8'-0" (2.4 m)	20.00 (1.800)	1.000 (0.810)

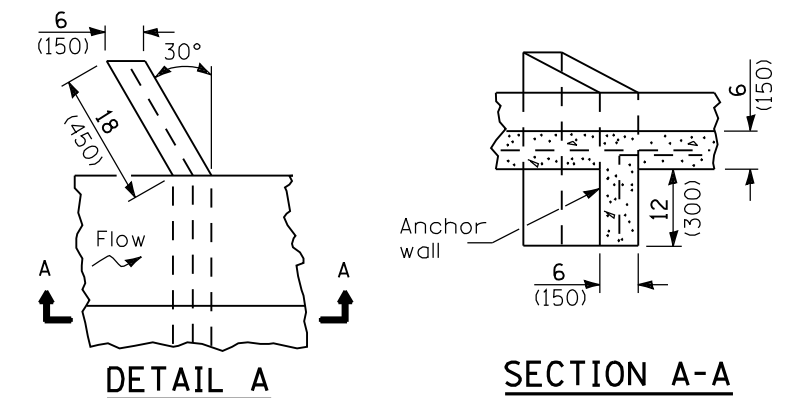
**PAVED DITCH TYPE B**



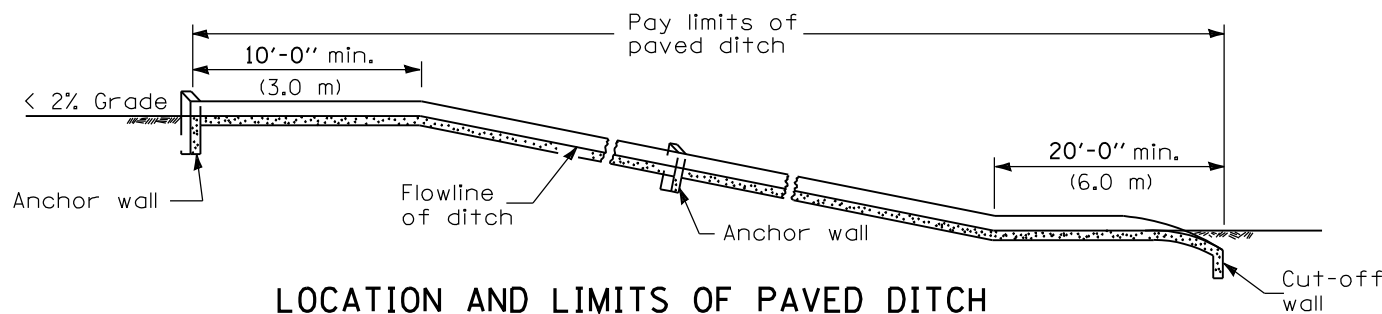
**DETAIL OF UPSTREAM END**



**DETAIL OF DOWNSTREAM END**



**DETAIL OF ANCHOR WALL**



**GENERAL NOTES**

All slopes are expressed as of vertical displacement to units of horizontal displacement (V:H).

All dimensions are in inches (millimeters) unless otherwise shown.

DATE	REVISIONS
1-1-09	Switched units to English (metric).
1-1-97	Renum. Standard 2258-5. Deleted DN Symbol.

**PAVED DITCH**

**STANDARD 606401-01**

Illinois Department of Transportation

PASSED January 1, 2009

ENGINEER OF POLICY AND PROCEDURES

APPROVED January 1, 2009

ENGINEER OF DESIGN AND ENVIRONMENT

ISSUED 1-1-97