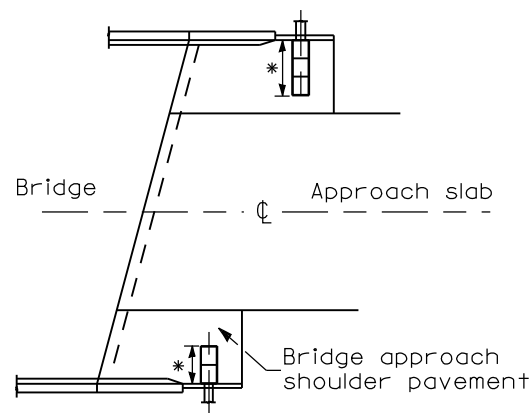
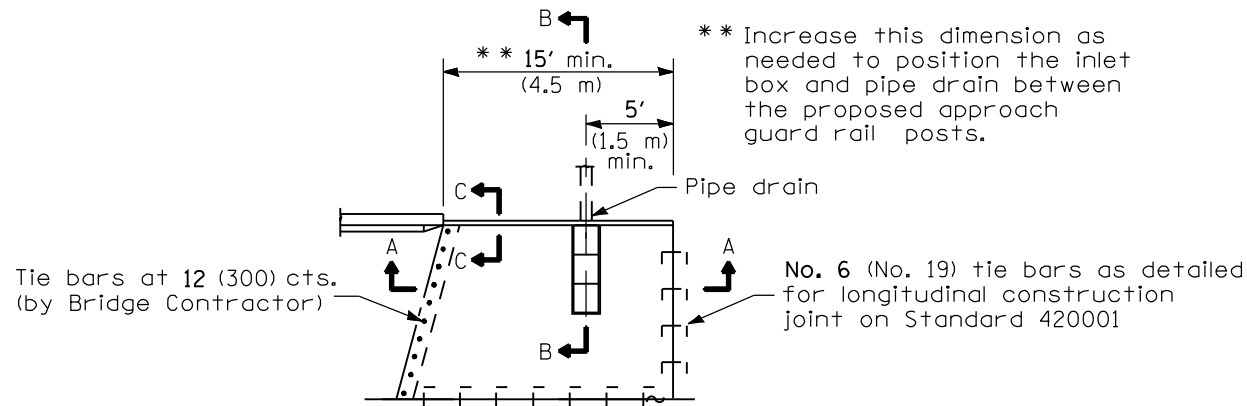


* Type B, C, or D inlet box as required.

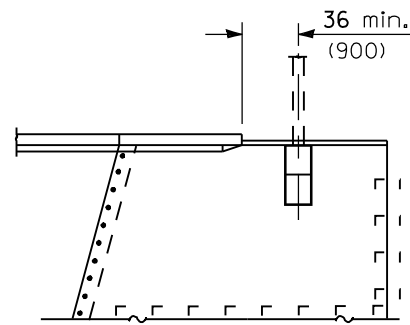


GENERAL PLAN



TYPICAL DETAIL PLAN

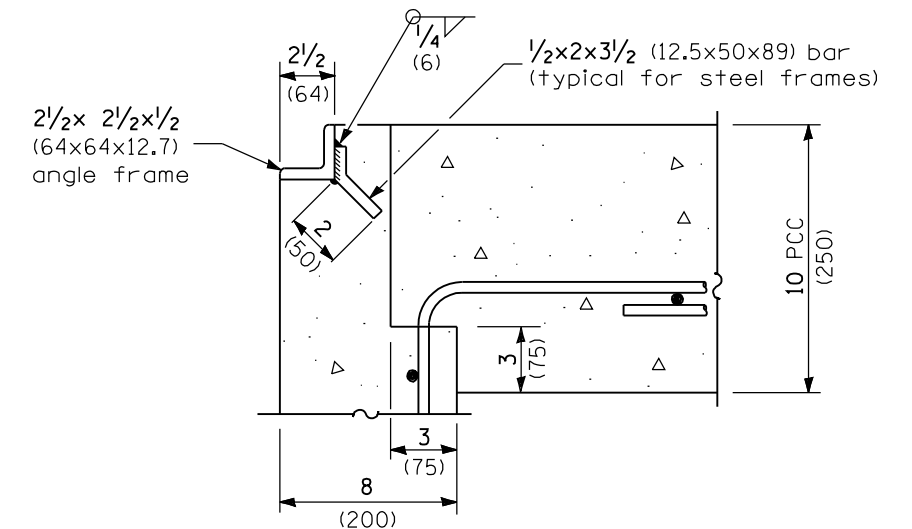
(W/O Wingwall)



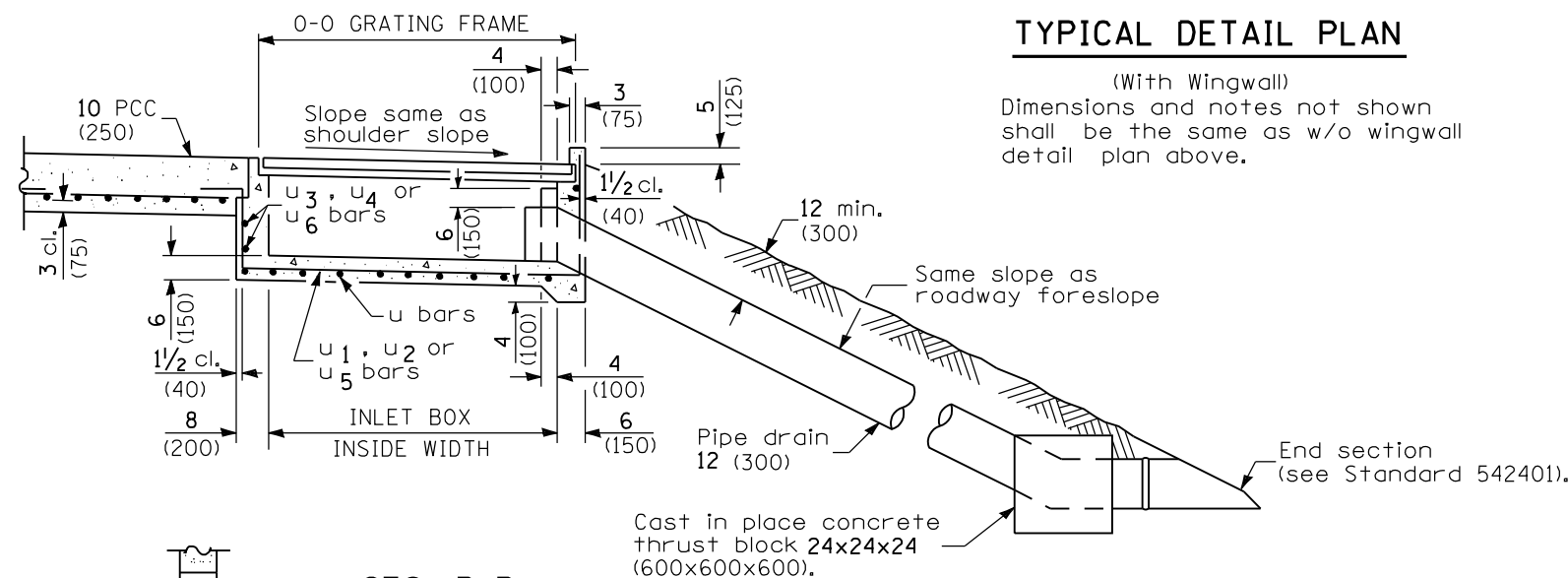
TYPICAL DETAIL PLAN

(With Wingwall)

Dimensions and notes not shown shall be the same as w/o wingwall detail plan above.



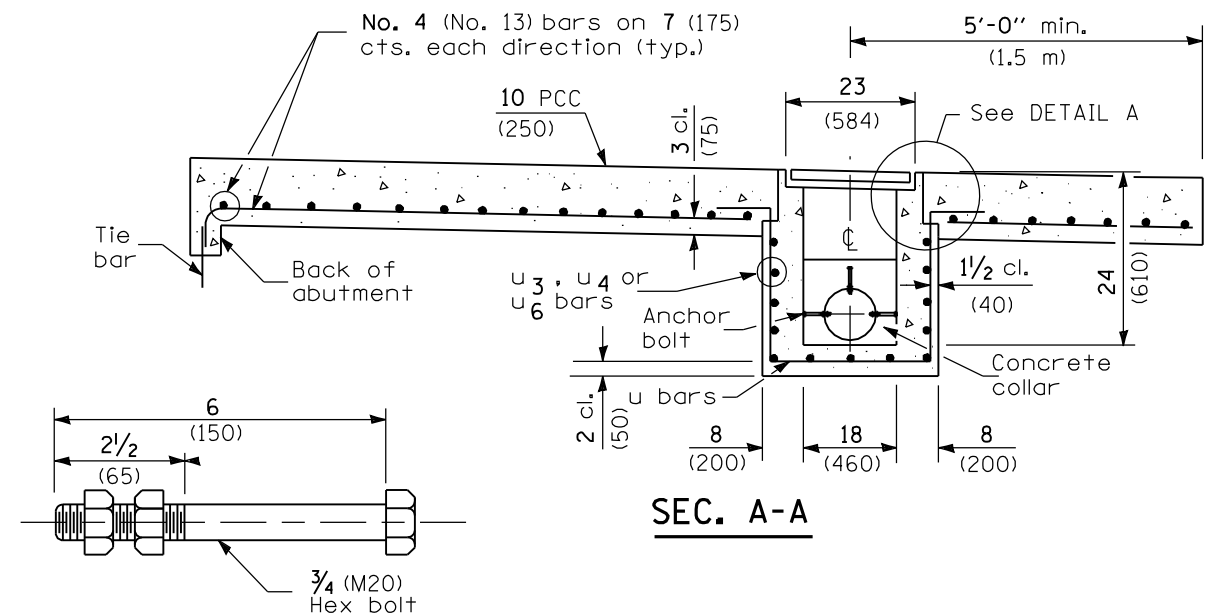
DETAIL A



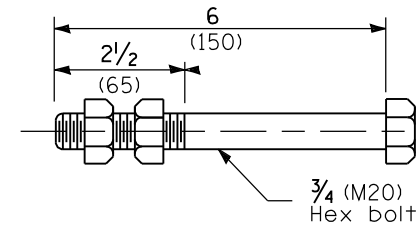
SEC. B-B

BOX OUTLET WHEN PRECAST

INLET TYPE	SHOULDER WIDTH	0-0 GRATING FRAME	INLET BOX INSIDE WIDTH	INLET BOX INSIDE LENGTH
Type B	Less than 5' (1.5 m)	2'-3" (0.690 m)	1'-10" (0.560 m)	18 (460)
Type C	5' - 6' (1.5 m) (1.8 m)	4'-4" (1.325 m)	3'-11" (1.195 m)	18 (460)
Type D	Greater than 6' (1.8 m)	6'-5" (1.960 m)	6'-0" (1.830 m)	18 (460)

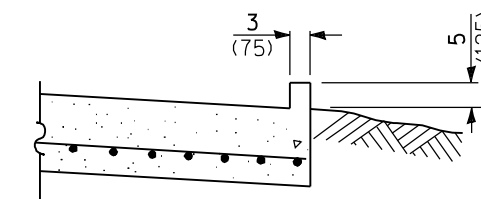


SEC. A-A



ANCHOR BOLT

(Used to tie pipe to concrete collar)



SEC. C-C

GENERAL NOTES

All exposed edges of the inlet, except the upper perimeter, shall be beveled 3/4 (20).

For placement of approach shoulder pavement on existing construction substitute expansion anchor ties for bars. Omit tie bars for flexible approaches or bridge approach shoulder pavement constructed monolithically with shoulder pavement.

All dimensions are in inches (millimeters) unless otherwise shown.

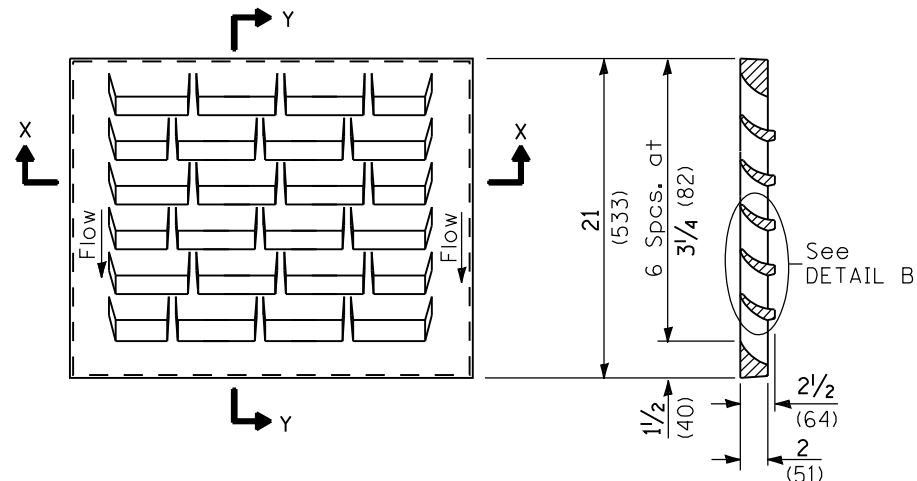
DATE	REVISIONS
1-1-09	Switched units to English (metric).
1-1-07	Soft converted metric reinforcement bars.

BRIDGE APPROACH SHOULDER PAVEMENT AND DRAIN

(Sheet 1 of 2)

STANDARD 609001-04

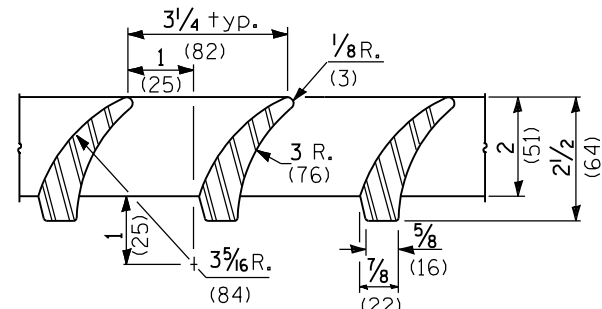
Illinois Department of Transportation
 PASSED January 1, 2009
 ENGINEER OF POLICY AND PROCEDURES
 APPROVED January 1, 2009
 ENGINEER OF DESIGN AND ENVIRONMENT



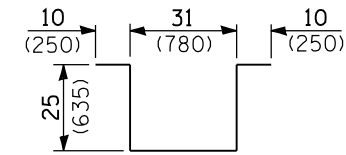
DETAIL OF CAST GRATE

Type B requires 1 grate
 Type C requires 2 grates
 Type D requires 3 grates

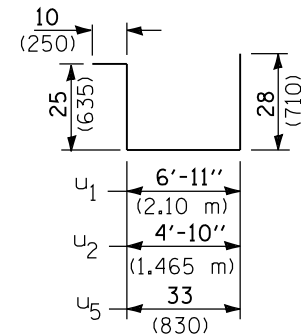
SECTION Y-Y



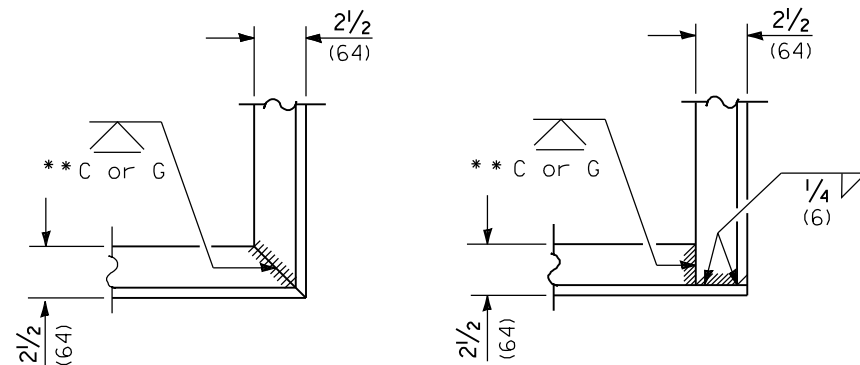
DETAIL B



BAR U



BARS U₁, U₂ & U₅

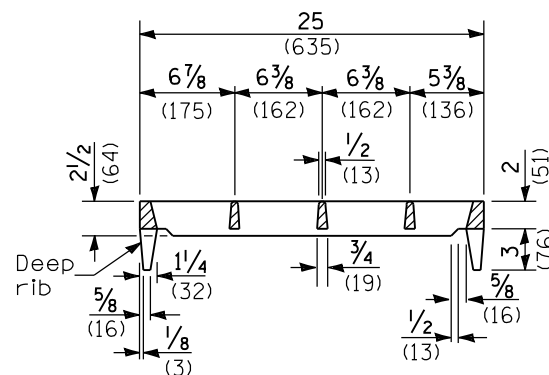


ALT. 1

ALT. 2

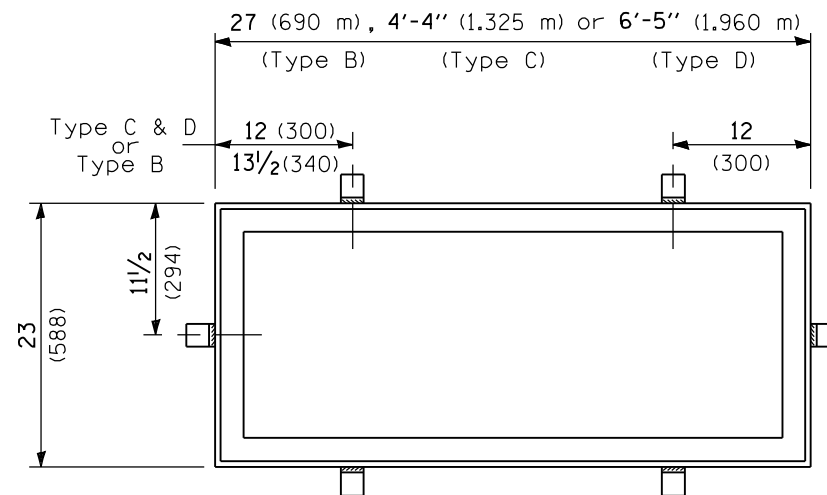
TYPICAL CORNER of STEEL GRATING FRAME

**Cut or Grind flush



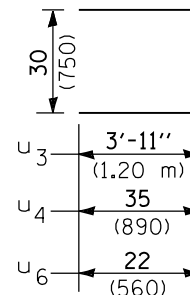
SECTION X-X

(Deep rib shall be omitted for end(s) resting on frame perimeter)



DETAIL OF STEEL FRAME

Cast frame to have same basic dimensions.



BARS U₃, U₄ & U₆

INLET BOX

REQUIRED MATERIAL			
TYPE B			
Bar	Qty.	Size	Length
u	4	No. 4 (No.13)	8'-5" (2.550 m)
u ₅	3	No. 4 (No.13)	8'-0" (2.425 m)
u ₆	4	No. 4 (No.13)	6'-2" (1.870 m)
Concrete	cu. yds. (m ³)	0.5 (0.4)	
Reinf. bars	lbs. (kg)	55.0 (25.0)	
Grating	sq. ft. (m ²)	3.6 (0.34)	
TYPE C			
Bar	Qty.	Size	Length
u	6	No. 4 (No.13)	8'-5" (2.550 m)
u ₂	3	No. 4 (No.13)	10'-1" (3.060 m)
u ₄	4	No. 4 (No.13)	8'-4" (2.530 m)
Concrete	cu. yds. (m ³)	0.8 (0.6)	
Reinf. bars	lbs. (kg)	76 (34.5)	
Grating	sq. ft. (m ²)	7.3 (0.68)	
TYPE D			
Bar	Qty.	Size	Length
u	8	No. 4 (No.13)	8'-5" (2.550 m)
u ₁	3	No. 4 (No.13)	12'-2" (3.695 m)
u ₃	4	No. 4 (No.13)	10'-4" (3.150 m)
Concrete	cu. yds. (m ³)	1.1 (0.8)	
Reinf. bars	lbs. (kg)	97.0 (44.0)	
Grating	sq. ft. (m ²)	10.9 (1.02)	

BRIDGE APPROACH SHOULDER PAVEMENT AND DRAIN

(Sheet 2 of 2)

STANDARD 609001-04

Illinois Department of Transportation

PASSED January 1, 2009

ISSUED 1-1-97

ENGINEER OF POLICY AND PROCEDURES

APPROVED January 1, 2009

ENGINEER OF DESIGN AND ENVIRONMENT