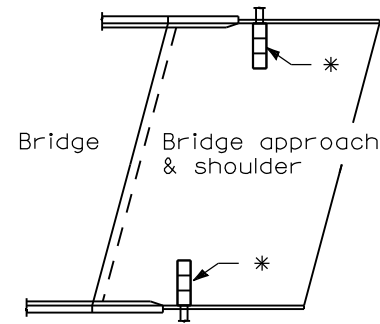
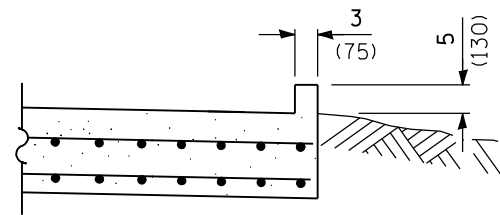


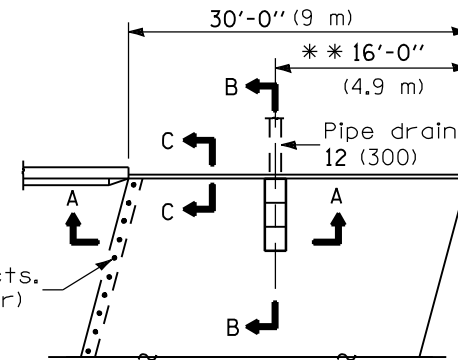
* Type B, C, or D inlet box as required.



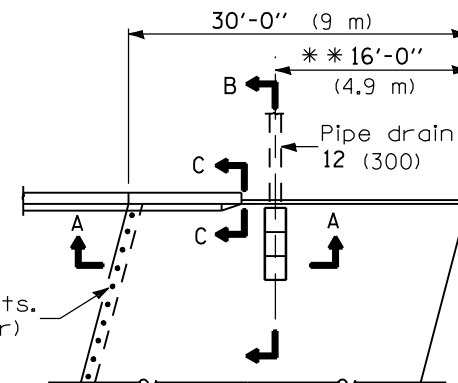
GENERAL PLAN



SECTION C-C

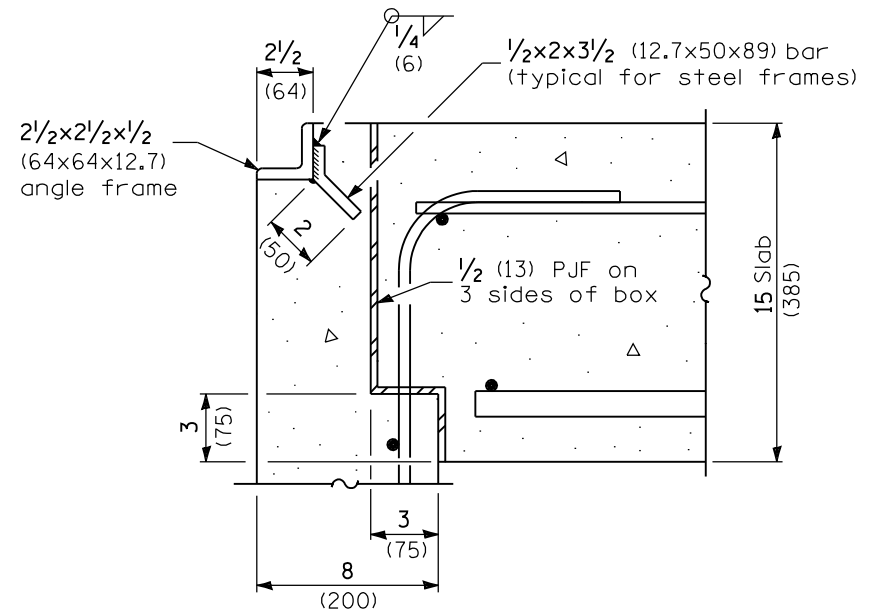


**TYPICAL DETAIL PLAN
(W/O Wingwall)**

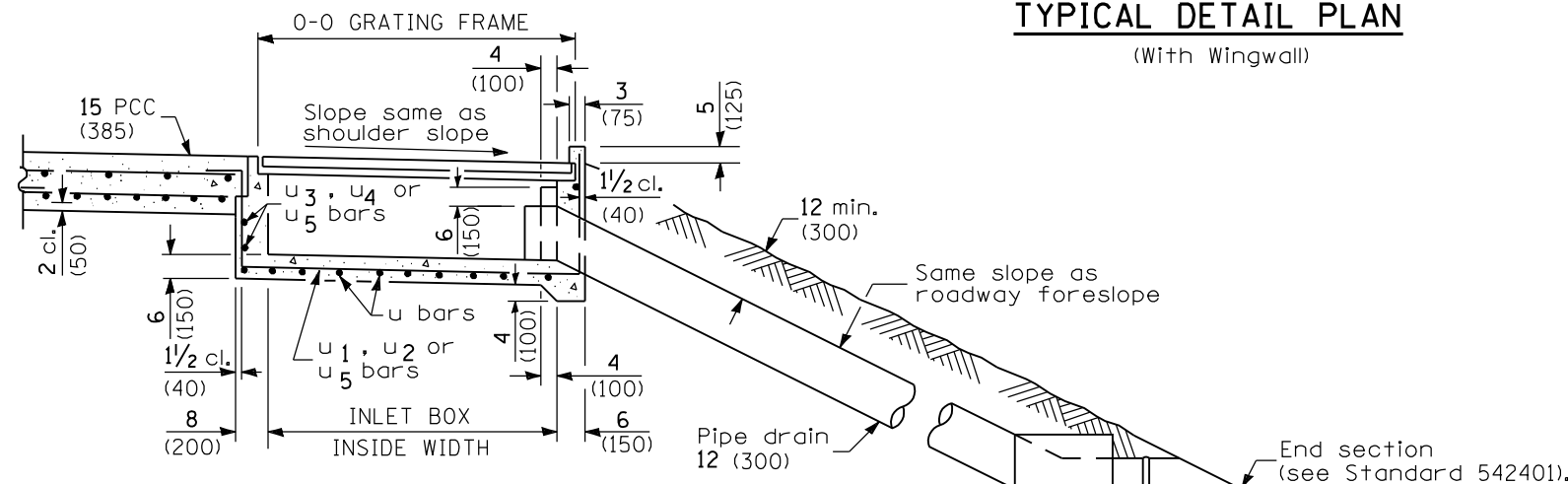


**TYPICAL DETAIL PLAN
(With Wingwall)**

** Vary this dimension as needed to position the Inlet Box and Pipe Drain between the proposed approach guardrail posts.

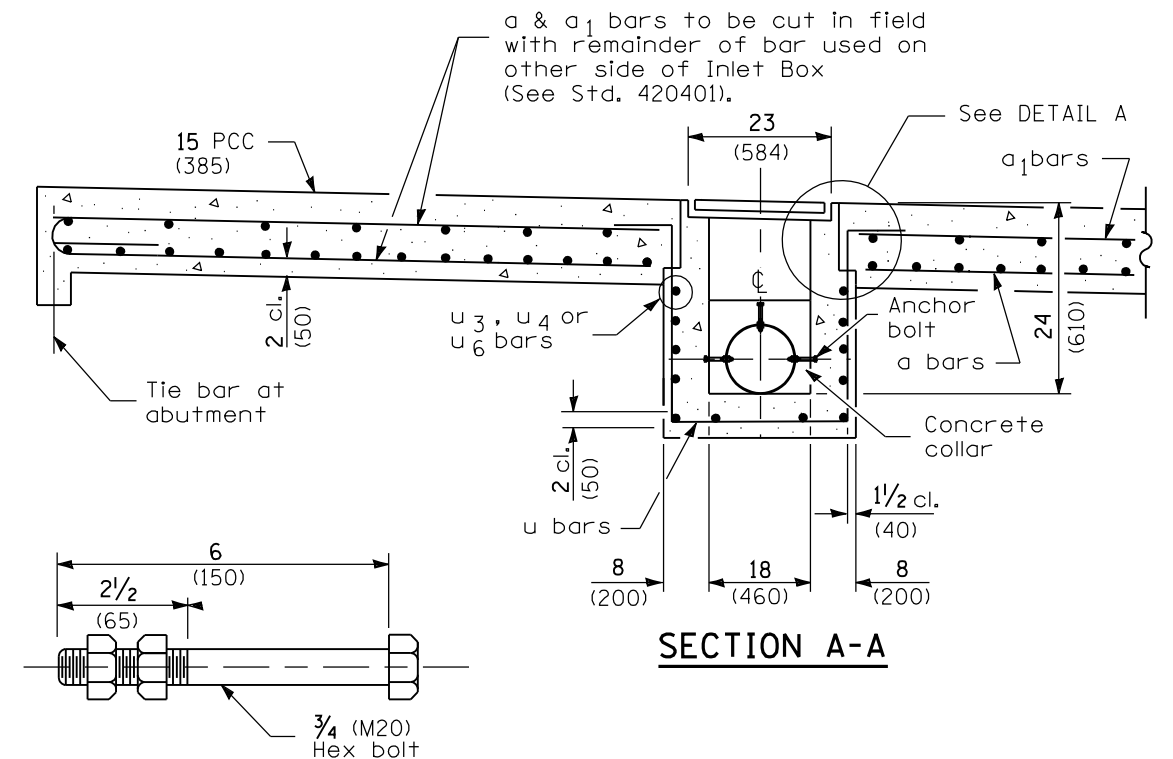


DETAIL A



SEC. B-B

Cast in place concrete thrust block 24x24x24 (600x600x600)



SECTION A-A

ANCHOR BOLT

(Used to tie pipe to concrete collar)

GENERAL NOTES

All exposed edges of the inlet, except the upper perimeter, shall be beveled 3/4 (20).

All dimensions are in inches (millimeters) unless otherwise shown.

INLET TYPE	SHOULDER WIDTH	O-O GRATING FRAME	INLET BOX INSIDE WIDTH	INLET BOX INSIDE LENGTH
Type B	Less than 5' (1.5 m)	2'-3" (0.690 m)	1'-10" (0.560 m)	18 (460)
Type C	5' - 6' (1.5 m) (1.8 m)	4'-4" (1.325 m)	3'-11" (1.195 m)	18 (460)
Type D	Greater than 6' (1.8 m)	6'-5" (1.960 m)	6'-0" (1.830 m)	18 (460)

DATE	REVISIONS
1-1-09	Switched units to English (metric).
1-1-07	Soft converted metric reinforcement bars.

BRIDGE APPROACH PAVEMENT (DRAIN DETAIL)

(Sheet 1 of 2)

STANDARD 609006-04

Illinois Department of Transportation

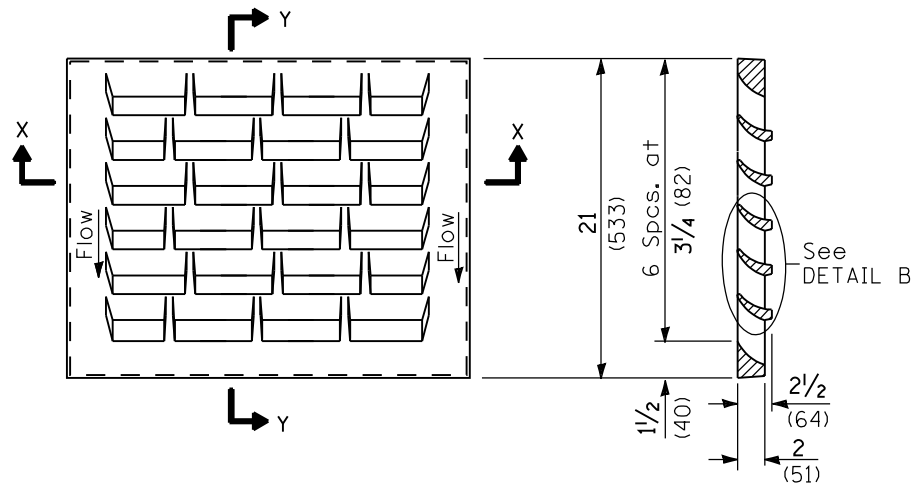
PASSED January 1, 2009

ENGINEER OF POLICY AND PROCEDURES

APPROVED January 1, 2009

ENGINEER OF DESIGN AND ENVIRONMENT

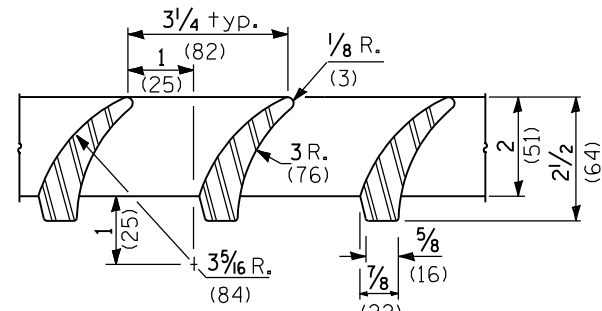
ISSUED 1-1-97



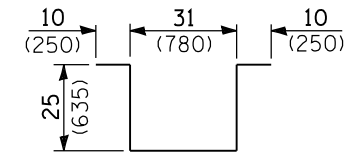
DETAIL OF CAST GRATE

Type B requires 1 grate
 Type C requires 2 grates
 Type D requires 3 grates

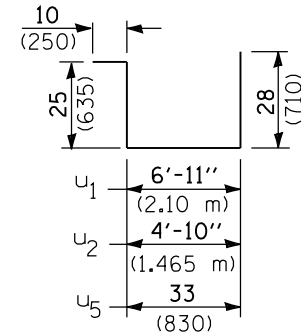
SECTION Y-Y



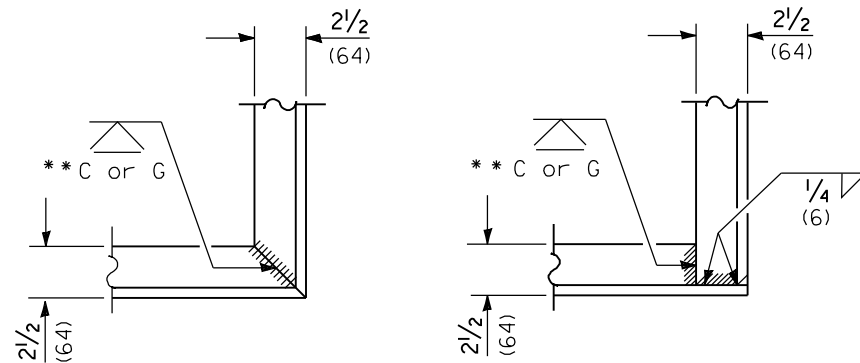
DETAIL B



BAR U



BARS U₁, U₂ & U₅

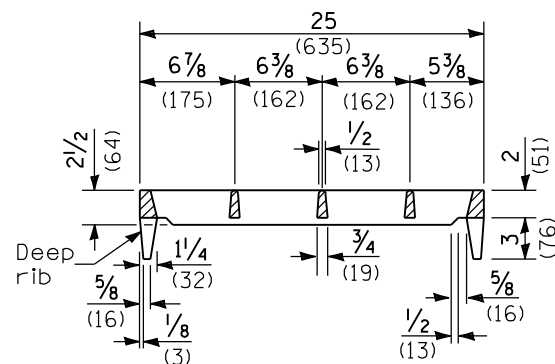


ALT. 1

ALT. 2

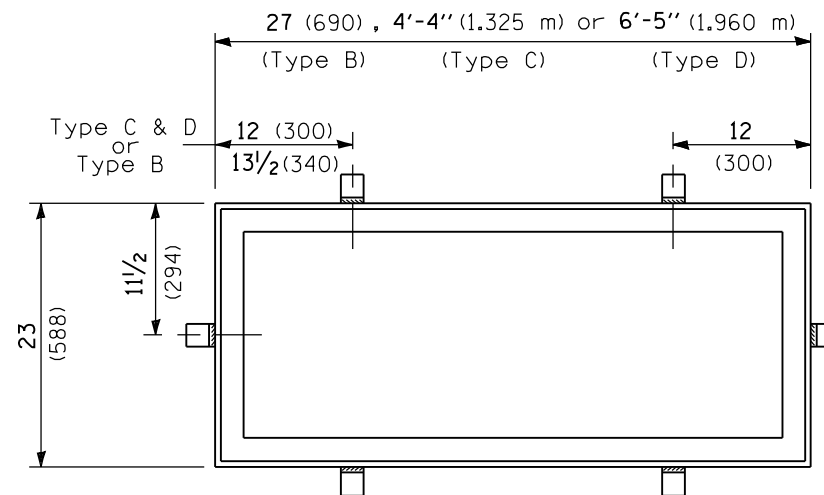
TYPICAL CORNER of STEEL GRATING FRAME

**Cut or Grind flush



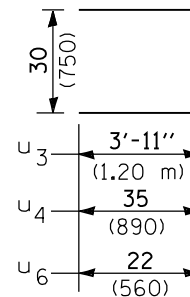
SECTION X-X

(Deep rib shall be omitted for end(s) resting on frame perimeter)



DETAIL OF STEEL FRAME

Cast frame to have same basic dimensions.



Bars U₃, U₄ & U₆

INLET BOX

REQUIRED MATERIAL

TYPE B

Bar	Qty.	Size	Length
u	4	No. 4 (No.13)	8'-5" (2.550 m)
u ₅	3	No. 4 (No.13)	8'-0" (2.425 m)
u ₆	4	No. 4 (No.13)	6'-2" (1.870 m)
Concrete	cu. yds. (m ³)		0.5 (0.4)
Reinf. bars	lbs. (kg)		55.0 (25.0)
Grating	sq. ft. (m ²)		3.6 (0.34)

TYPE C

Bar	Qty.	Size	Length
u	6	No. 4 (No.13)	8'-5" (2.550 m)
u ₂	3	No. 4 (No.13)	10'-1" (3.060 m)
u ₄	4	No. 4 (No.13)	8'-4" (2.530 m)
Concrete	cu. yds. (m ³)		0.8 (0.6)
Reinf. bars	lbs. (kg)		76 (34.5)
Grating	sq. ft. (m ²)		7.3 (0.68)

TYPE D

Bar	Qty.	Size	Length
u	8	No. 4 (No.13)	8'-5" (2.550 m)
u ₁	3	No. 4 (No.13)	12'-2" (3.695 m)
u ₃	4	No. 4 (No.13)	10'-4" (3.150 m)
Concrete	cu. yds. (m ³)		1.1 (0.8)
Reinf. bars	lbs. (kg)		97.0 (44.0)
Grating	sq. ft. (m ²)		10.9 (1.02)

BRIDGE APPROACH PAVEMENT (DRAIN DETAIL)

(Sheet 2 of 2)

STANDARD 609006-04

Illinois Department of Transportation
 PASSED January 1, 2009
 ENGINEER OF POLICY AND PROCEDURES
 APPROVED January 1, 2009
 ENGINEER OF DESIGN AND ENVIRONMENT