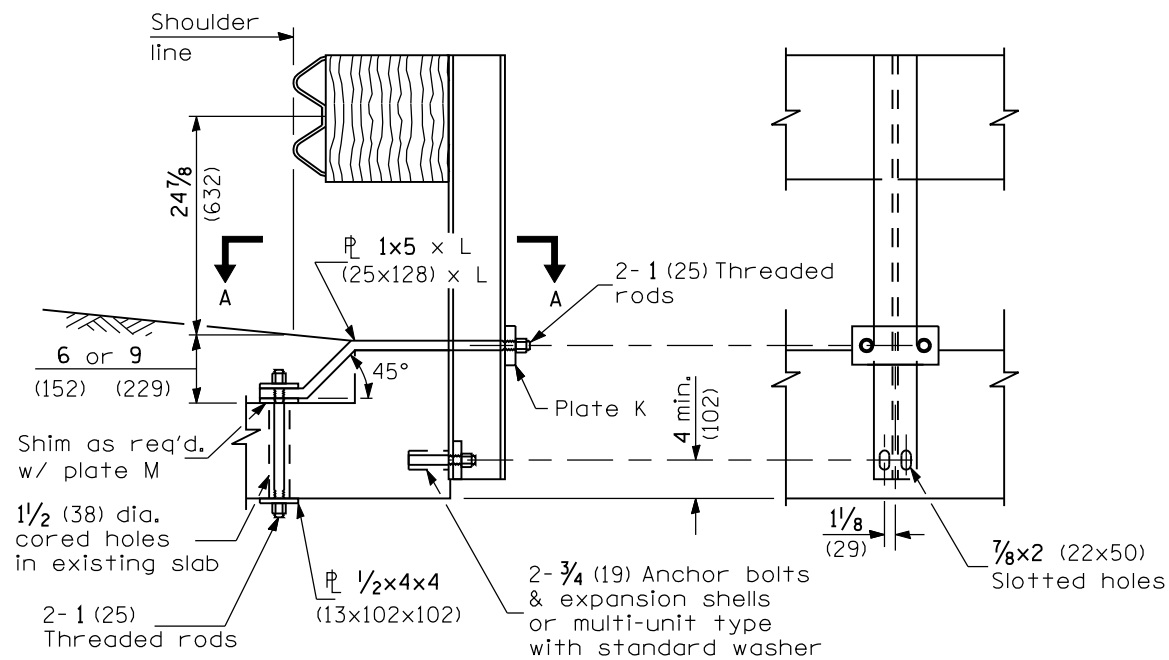


CROSS SECTION

ELEVATION

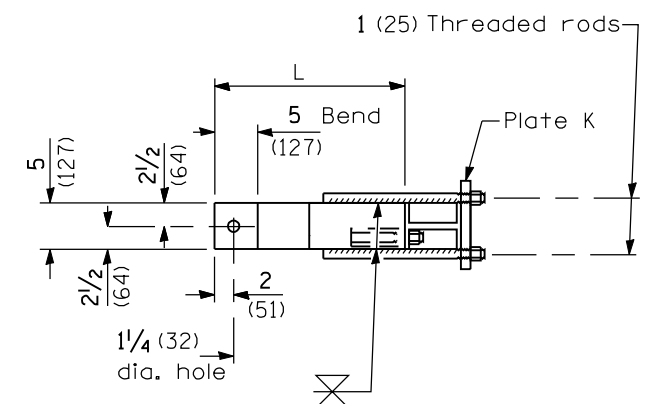
CONDITION $H > 18$ (450)



CROSS SECTION

ELEVATION

**CASE II
MOUNTED ON TOP HEADWALL
WITH SQUARE TIP**



SECTION A-A

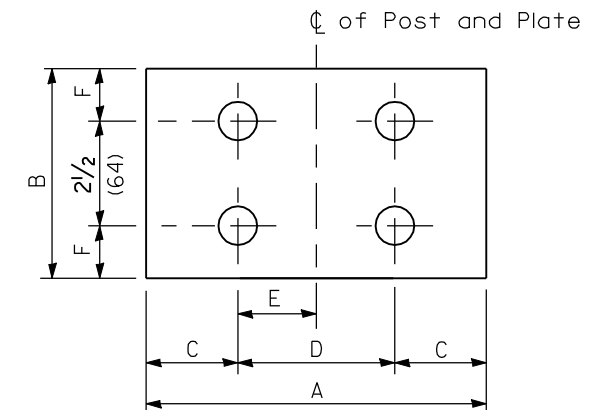


PLATE J

PLATE DIMENSIONS								
Type	A	B	C	D	E	F	Hole Dia.	Thick-ness
G	9 (230)	4 (100)	1/2 (40)	6 (150)	3 (75)	2 (50)	1/8 (29)	1 (25)
H	9 (230)	4 (100)	1/2 (40)	6 (150)	3 (75)	2 (50)	1/8 (29)	1/2 (13)
J	9 (230)	5 (127)	1/2 (40)	6 (150)	3 (75)	1/4 (32)	7/8 (22)	1 (25)
K	9 (230)	4 (100)	1/2 (40)	6 (150)	3 (75)	2 (50)	1/8 (29)	1/4 (32)
M	4 (100)	4 (100)	2 (50)	N/A	N/A	2 (50)	1/4 (32)	1/2 (13)

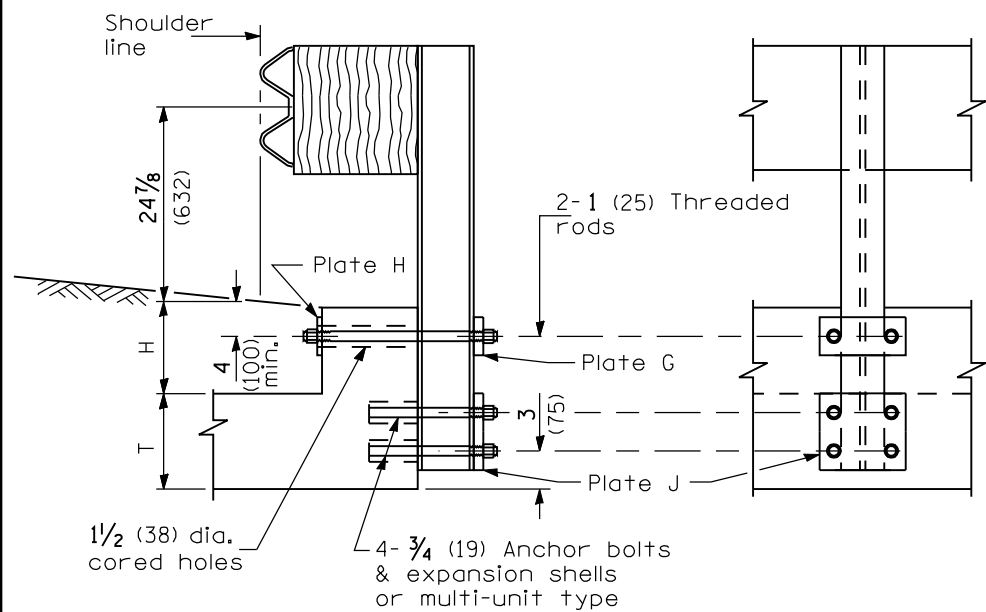
GENERAL NOTES

Except as noted, dimensions and notes specified for cases II, III, and IV are the same as specified for case I.

For details of guardrail elements not shown, see Standard 630001.

All threaded rods shall be installed with heavy hex nuts and standard washers.

All dimensions are in inches (millimeters) unless otherwise shown.

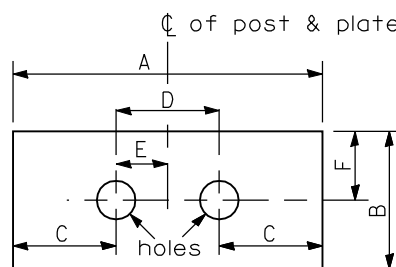


CROSS SECTION

ELEVATION

CONDITION $H < 18$ (450) & $H+T \geq 20$ (510)

**CASE I
MOUNTED ON
RAISED HEADWALL**



PLATES G, H & K

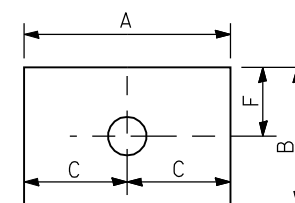


PLATE M

DATE	REVISIONS
1-1-09	Switched units to English (metric). Added fillet weld to Case IV.
1-1-07	Changes adopted to implement the Midwest Guardrail System.

GUARDRAIL MOUNTED ON EXISTING CULVERTS

(Sheet 1 of 2)

STANDARD 630101-08

Illinois Department of Transportation

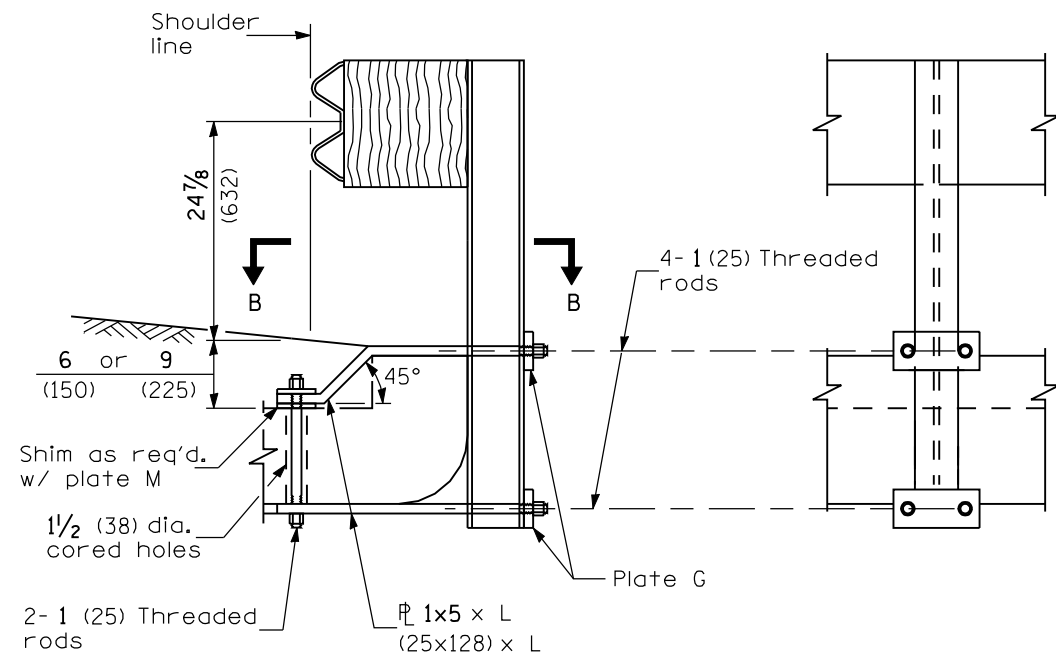
PASSED January 1, 2009

ISSUED 1-1-97

ENGINEER OF POLICY AND PROCEDURES

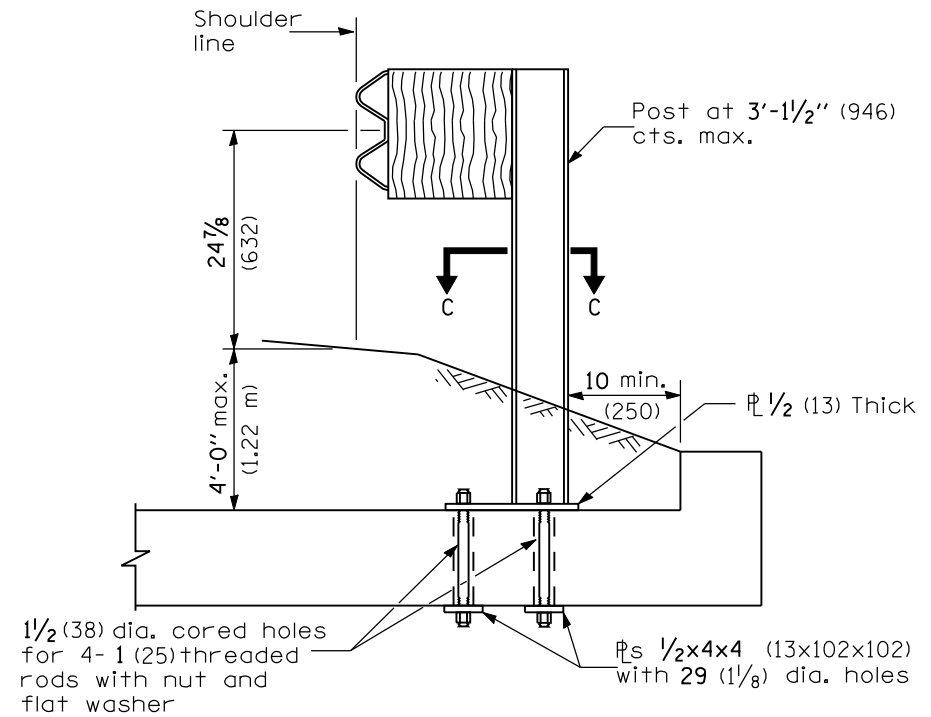
APPROVED January 1, 2009

ENGINEER OF DESIGN AND ENVIRONMENT

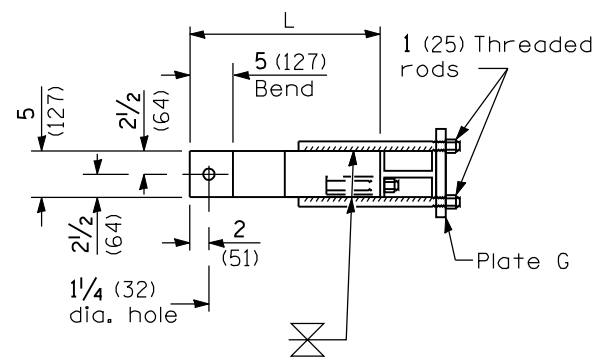


CROSS SECTION

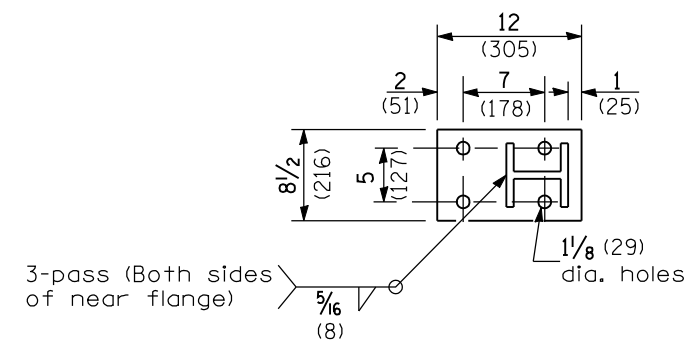
ELEVATION



CROSS SECTION



SECTION B-B



SECTION C-C

**CASE III
MOUNTED ON HEADWALL
WITH CURVED OR DEMOLISHED TIP**

**CASE IV
MOUNTED ON SLAB**