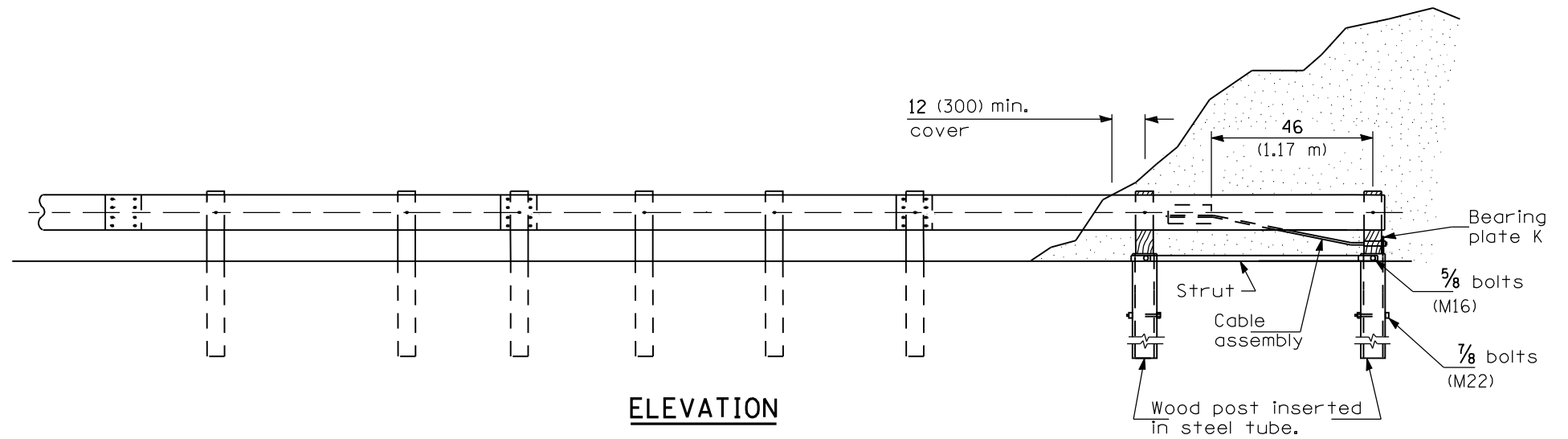
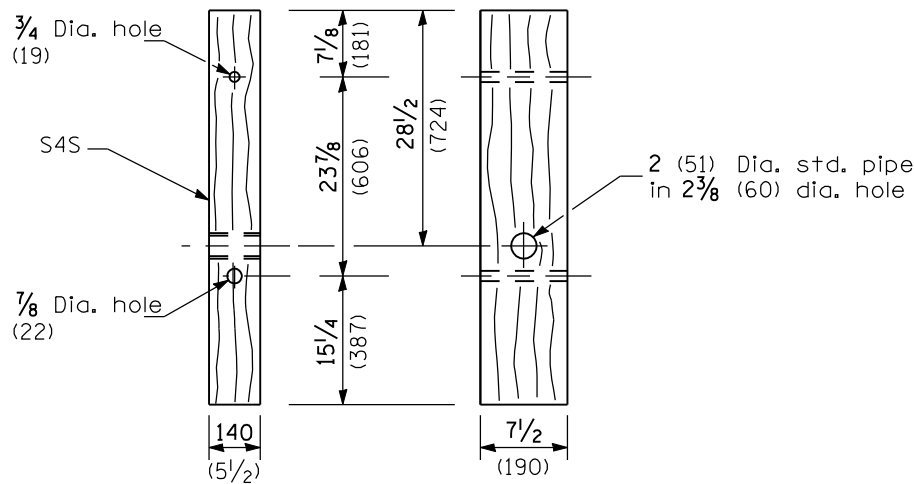


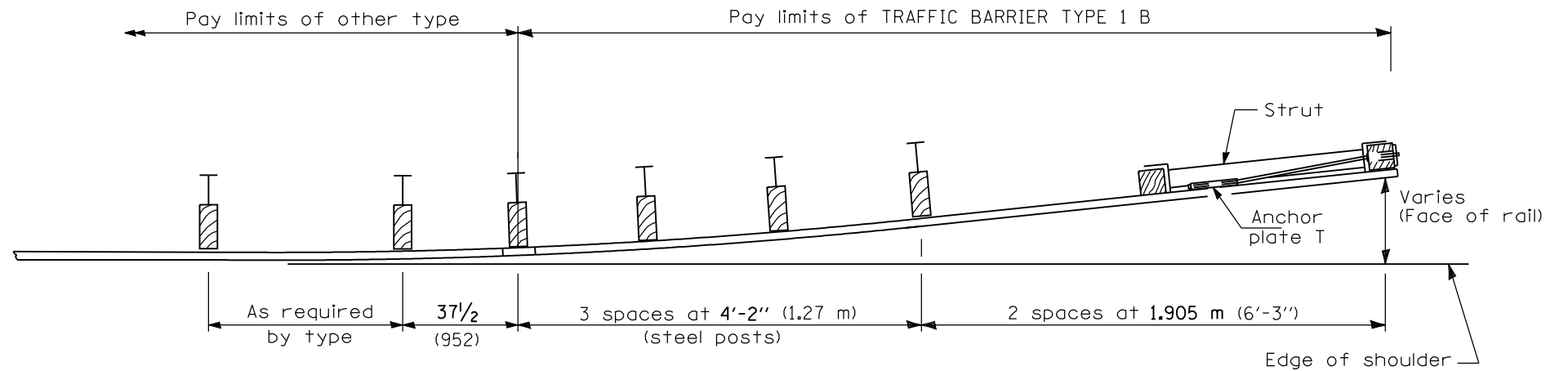
BEARING PLATE K



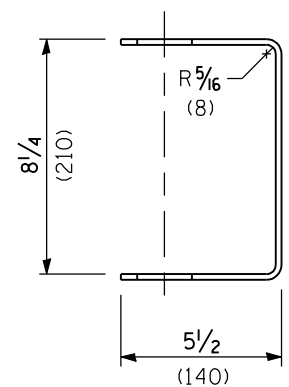
ELEVATION



WOOD POST

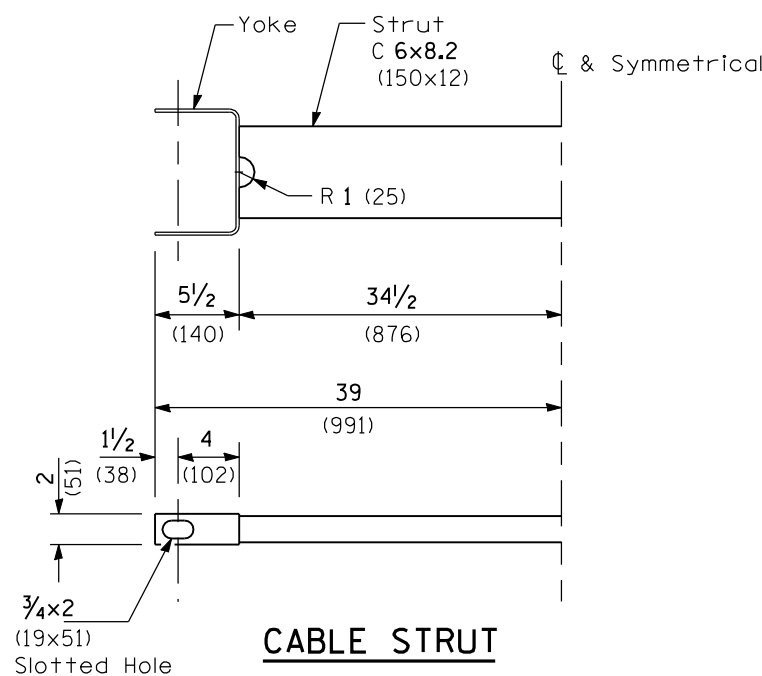


PLAN

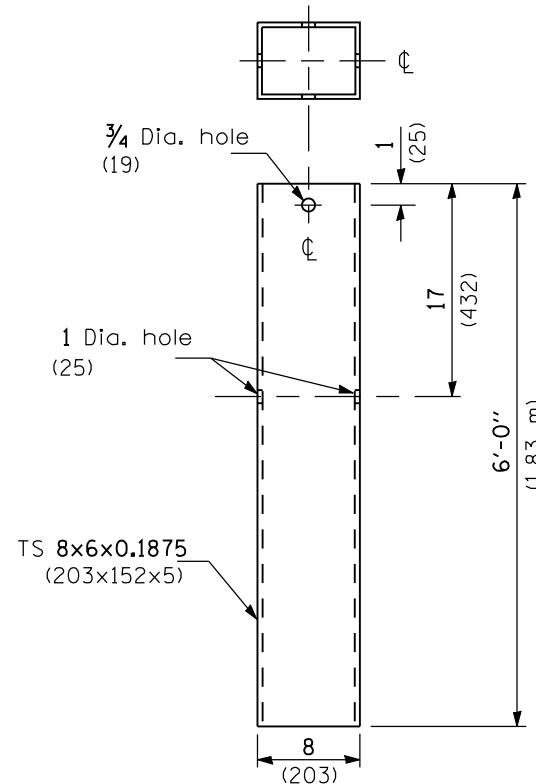


YOKE

3/16 (5) thick steel



CABLE STRUT



STEEL TUBE

GENERAL NOTES

See Standard 630001 for details of guardrail not shown.

The bearing plate K shall be held in position by (2) two eight penny nails driven into the post and bent over the top of the plate.

All dimensions are in inches (millimeters) unless otherwise shown.

DATE	REVISIONS
1-1-09	Switched units to English (metric).
1-1-08	Removed Plate Washer F.

TRAFFIC BARRIER TERMINAL, TYPE 1B

STANDARD 631006-06

Illinois Department of Transportation

PASSED January 1, 2009

ENGINEER OF POLICY AND PROCEDURES

APPROVED January 1, 2009

ENGINEER OF DESIGN AND ENVIRONMENT

ISSUED 1-1-07