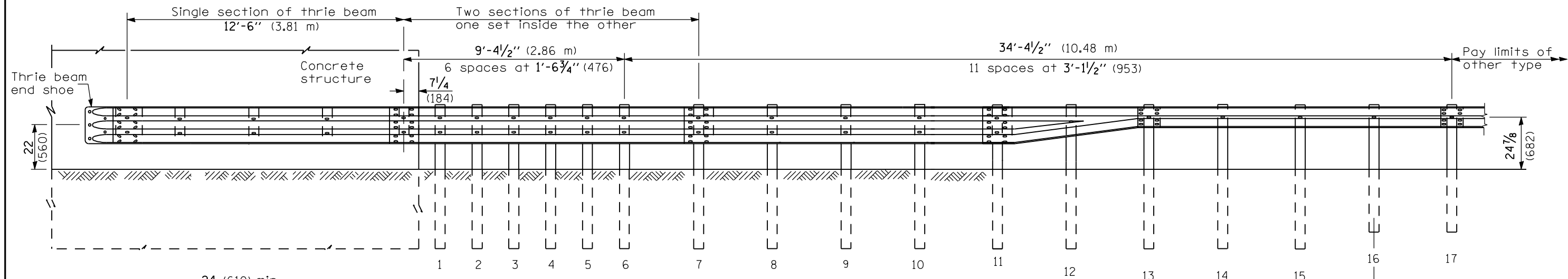
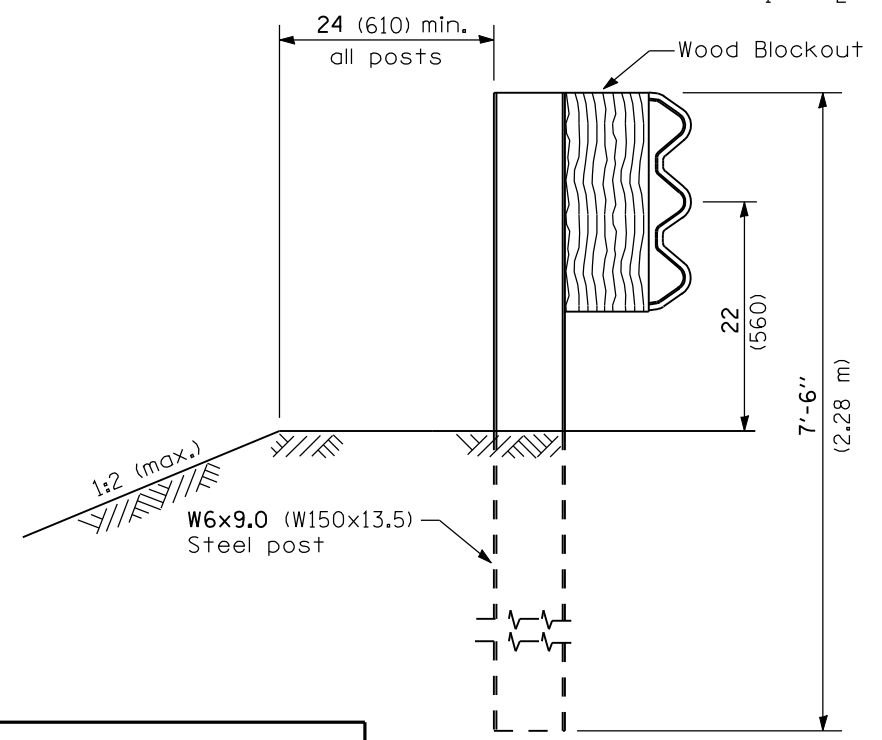


\* With standard washers. After tightening, cut the anchor bolts flush with the nuts and damage the nuts to prevent them from loosening.

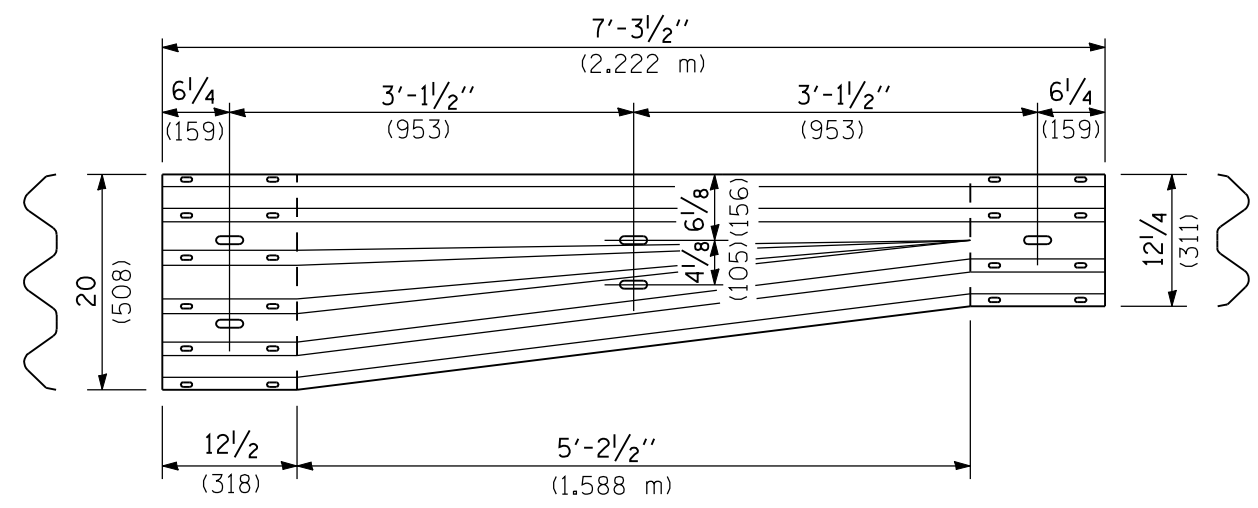
**PLAN**



**ELEVATION**



**SECTION A-A**



**TRANSITION SECTION**  
(10 gauge (3.4) rail element)

**GENERAL NOTES**

See Standard 630001 for details of guardrail not shown.

Thrie beam rail shall be bolted to block-out at all posts.

All slope ratios are expressed as units of vertical displacement to units of horizontal displacement (V:H).

All dimensions are in inches (millimeters) unless otherwise shown.

Illinois Department of Transportation

PASSED January 1, 2009

ENGINEER OF POLICY AND PROCEDURES

APPROVED January 1, 2009

ENGINEER OF DESIGN AND ENVIRONMENT

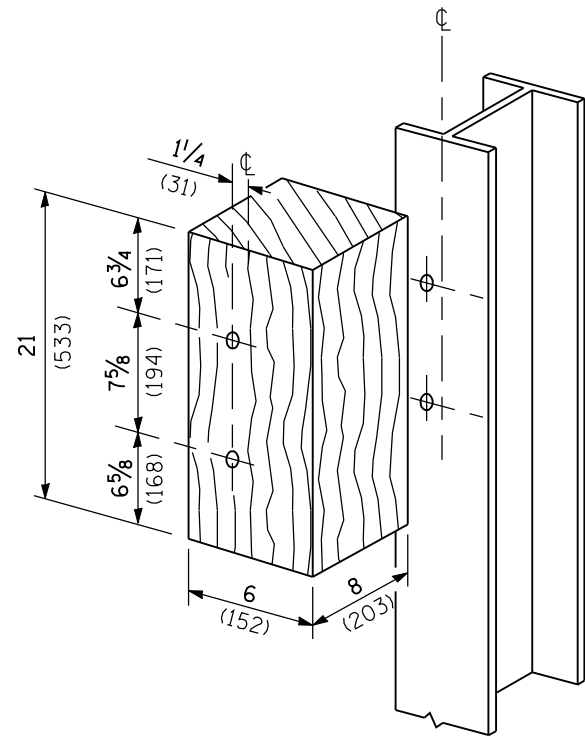
ISSUED 1-1-2003

DATE	REVISIONS
1-1-09	Switched units to English (metric).
1-1-07	Changes adopted to implement the Midwest Guardrail System.

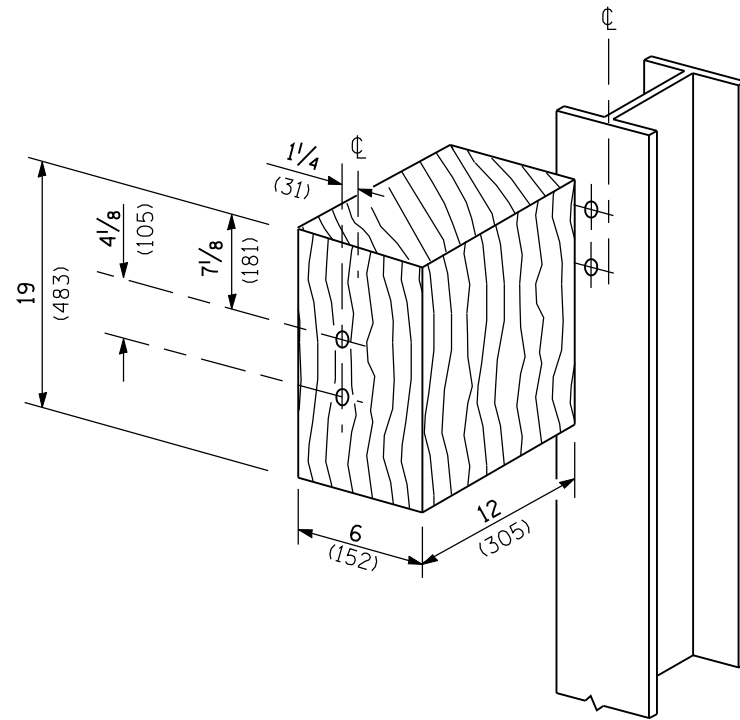
**TRAFFIC BARRIER TERMINAL, TYPE 6B**

(Sheet 1 of 2)

**STANDARD 631033-03**

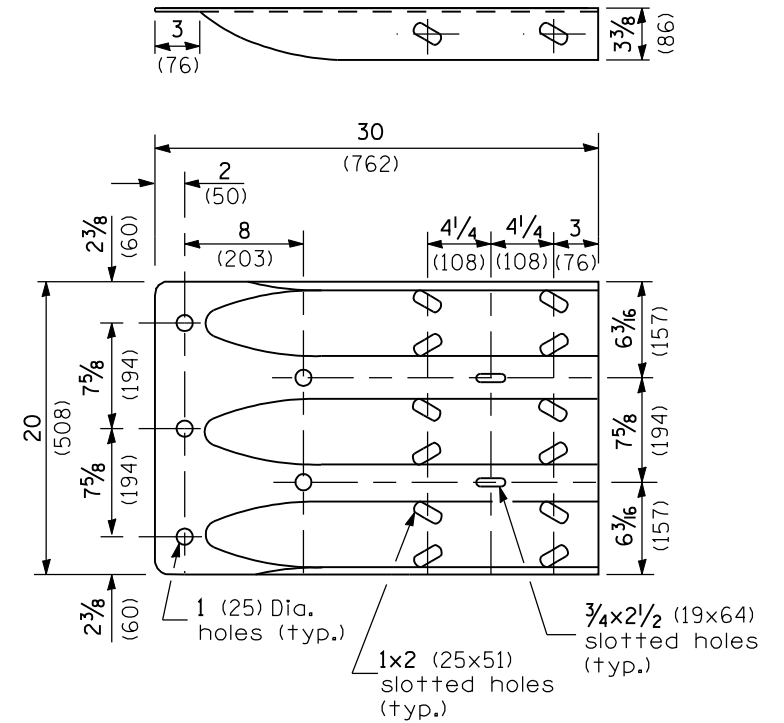


**POSTS 1-11 WOOD BLOCKOUT DETAIL**

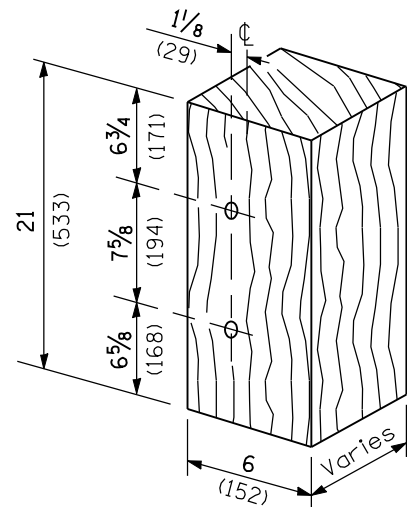


**POST 12 WOOD BLOCKOUT DETAIL**

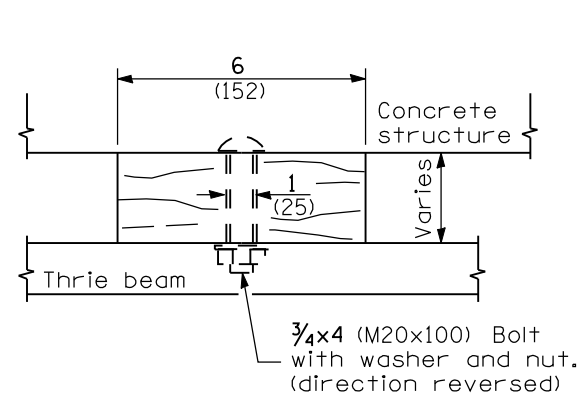
(See Standard 630001 for post 13-17 blockouts.)



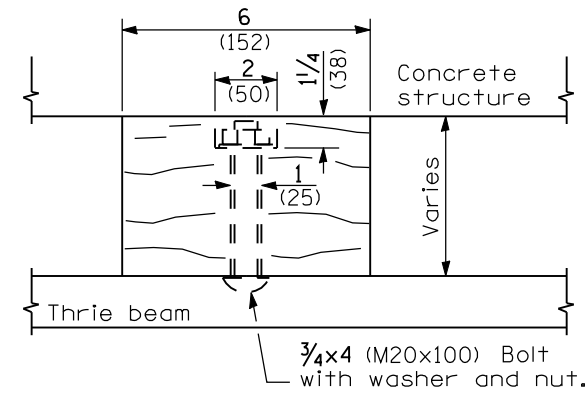
**THRIE BEAM END SHOE DETAIL**



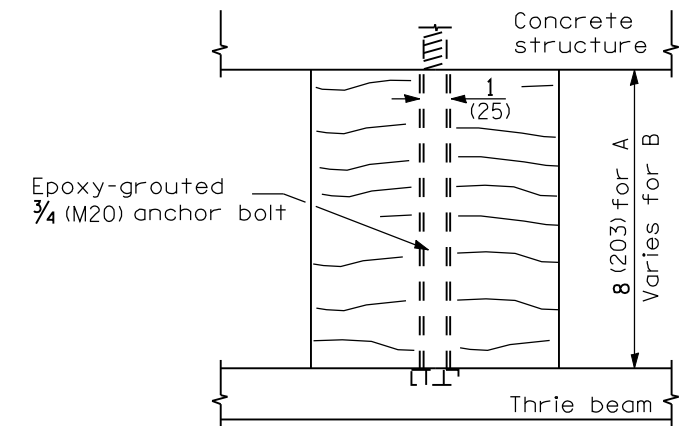
**MODIFIED THICKNESS DETAIL  
WOOD BLOCKOUTS A, B, C, & D**



**WOOD BLOCKOUT D**



**WOOD BLOCKOUT C**



**WOOD BLOCKOUT A & B**