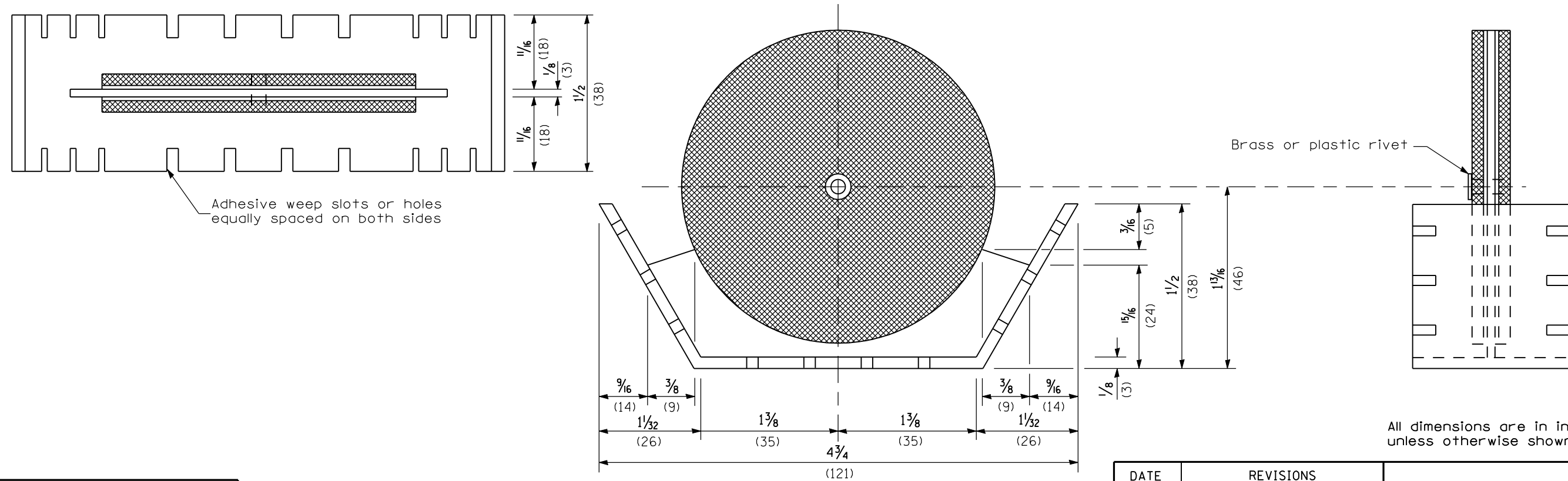


REFLECTOR MARKER TYPE A



REFLECTOR MARKER TYPE B

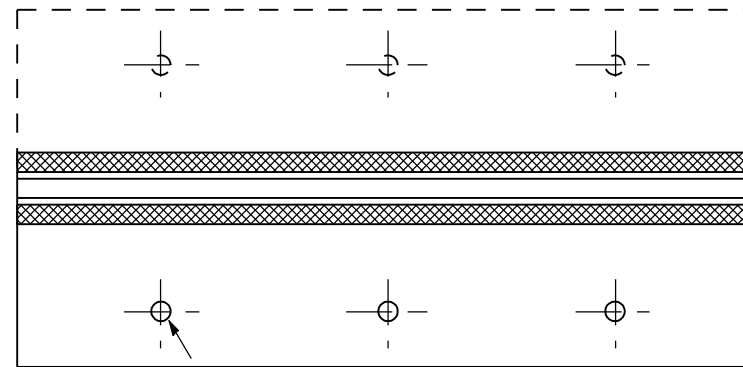
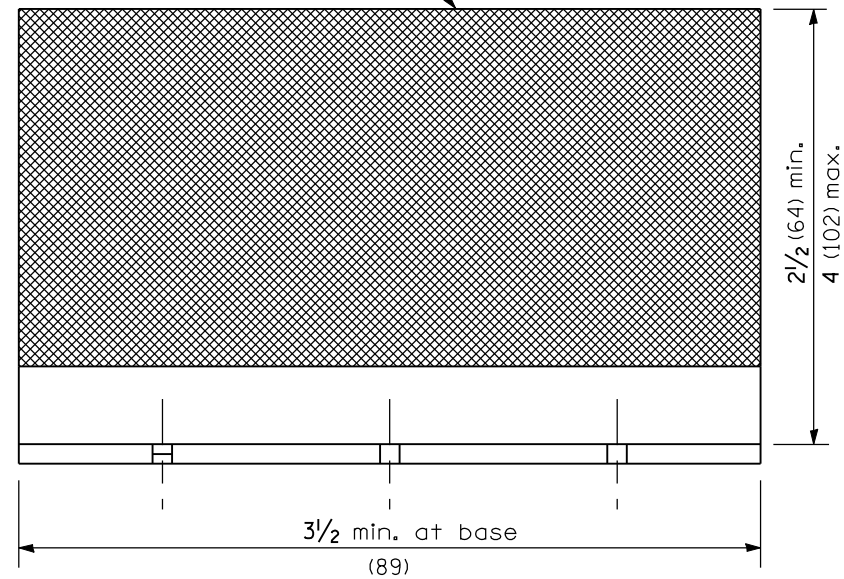
All dimensions are in inches (millimeters) unless otherwise shown.

Illinois Department of Transportation
 APPROVED January 1, 2009
 ENGINEER OF OPERATIONS
 APPROVED January 1, 2009
 ENGINEER OF DESIGN AND ENVIRONMENT

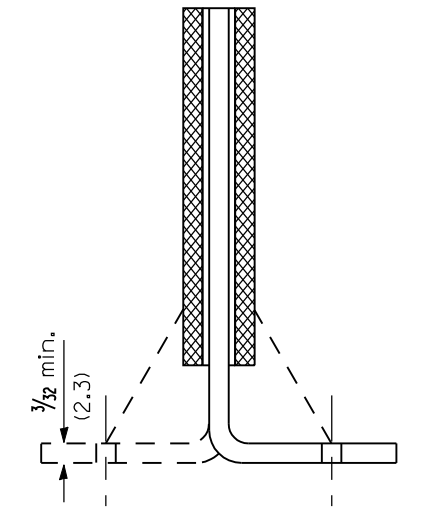
DATE	REVISIONS
1-1-09	Switched units to English (metric).
1-1-01	Revised signature block.

REFLECTOR MARKER AND MOUNTING DETAILS
 (Sheet 1 of 3)
STANDARD 635011-02

Min. reflective area
6 1/2 sq. in. (4,194 mm²)
each side. May be
rectangular or slight
trapezoid.

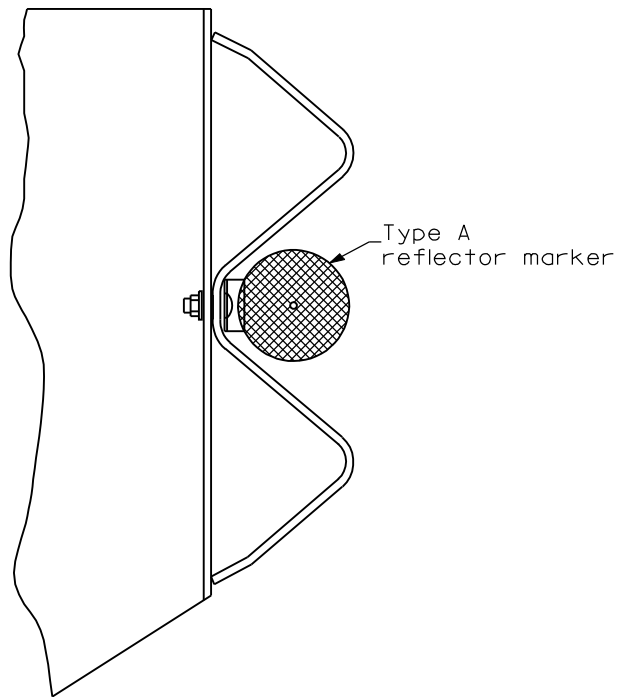


Minimum total area of
base 7.0 sq. in. (4,516 mm²)

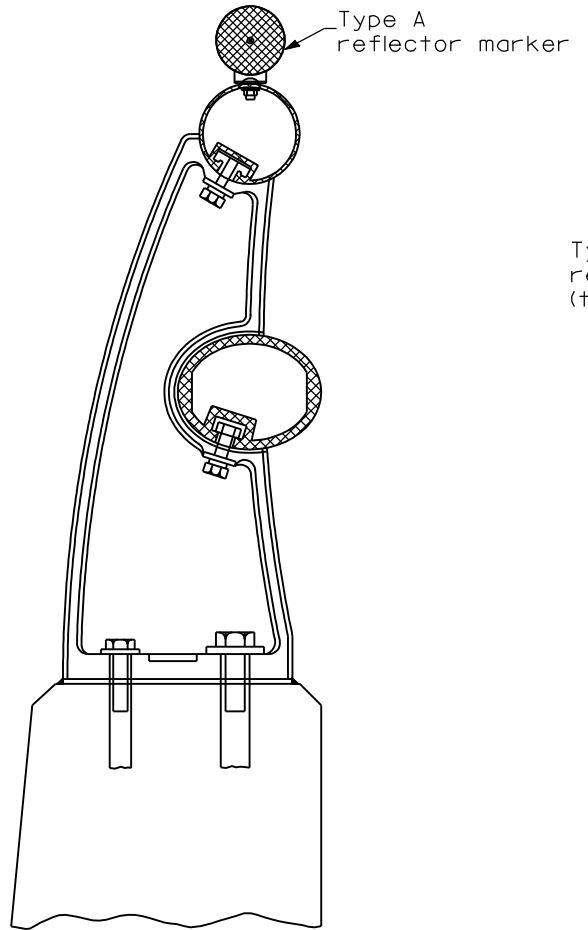


Cross section may be "T"
or "L" shaped and may have
side supports at ends.

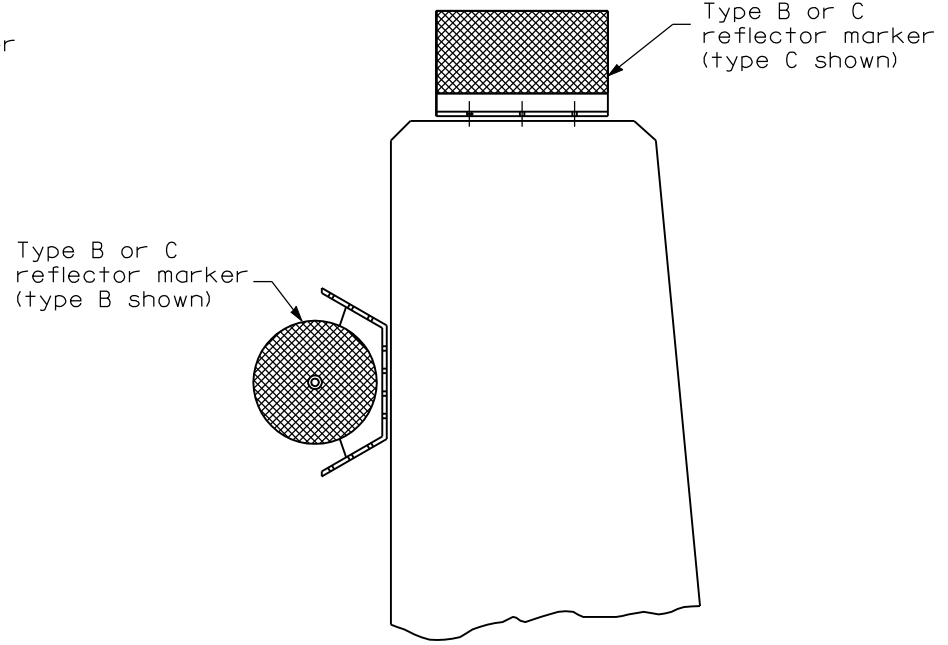
REFLECTOR MARKER TYPE C



TYPICAL MOUNTING WITH REFLECTOR



TYPICAL MOUNTING DETAIL
FOR BRIDGE RAIL REFLECTOR



TYPICAL MOUNTING DETAIL
FOR BARRIER WALL REFLECTOR

Illinois Department of Transportation

APPROVED January 1, 2009
ENGINEER OF OPERATIONS

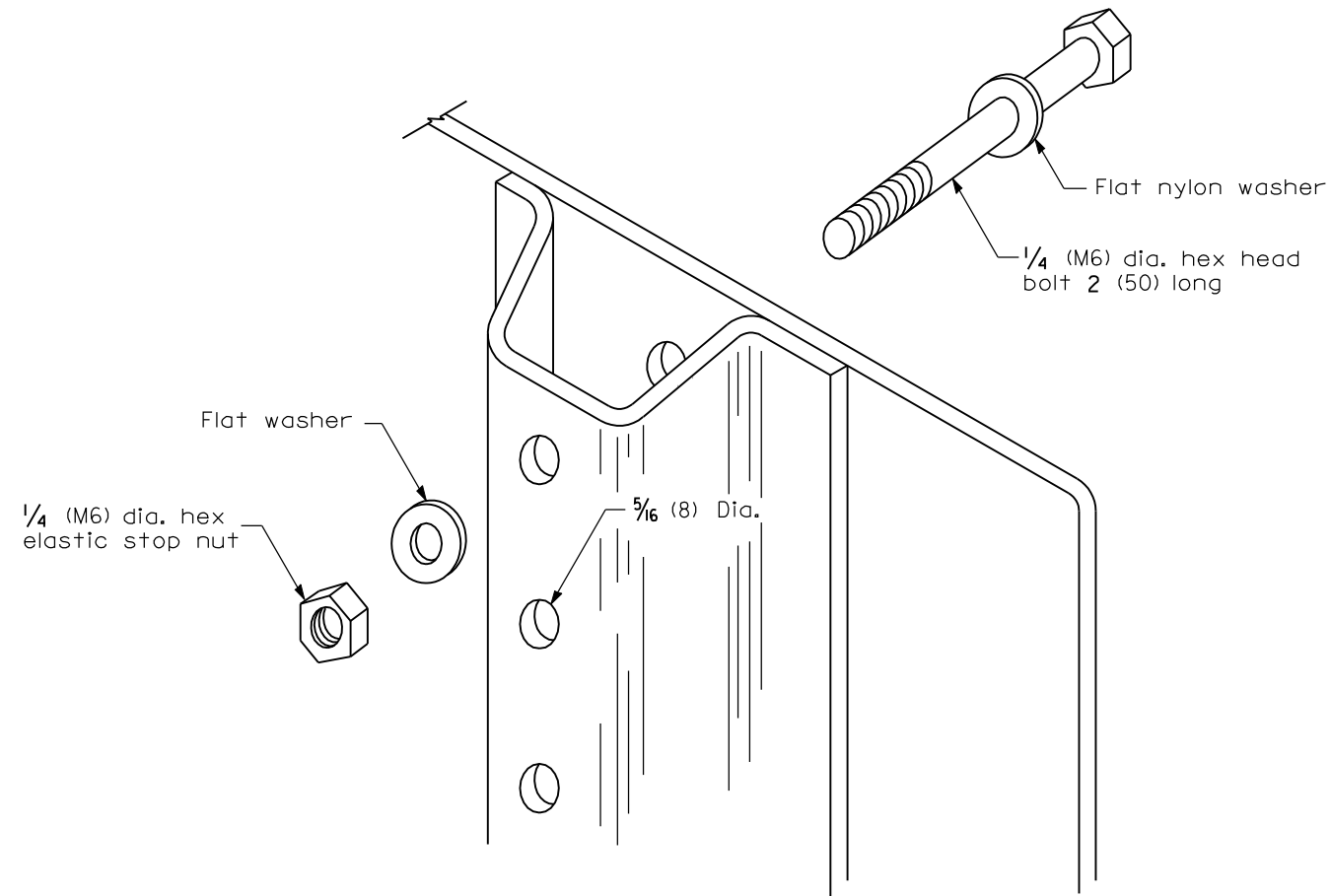
APPROVED January 1, 2009
ENGINEER OF DESIGN AND ENVIRONMENT

ISSUED 1-1-2000

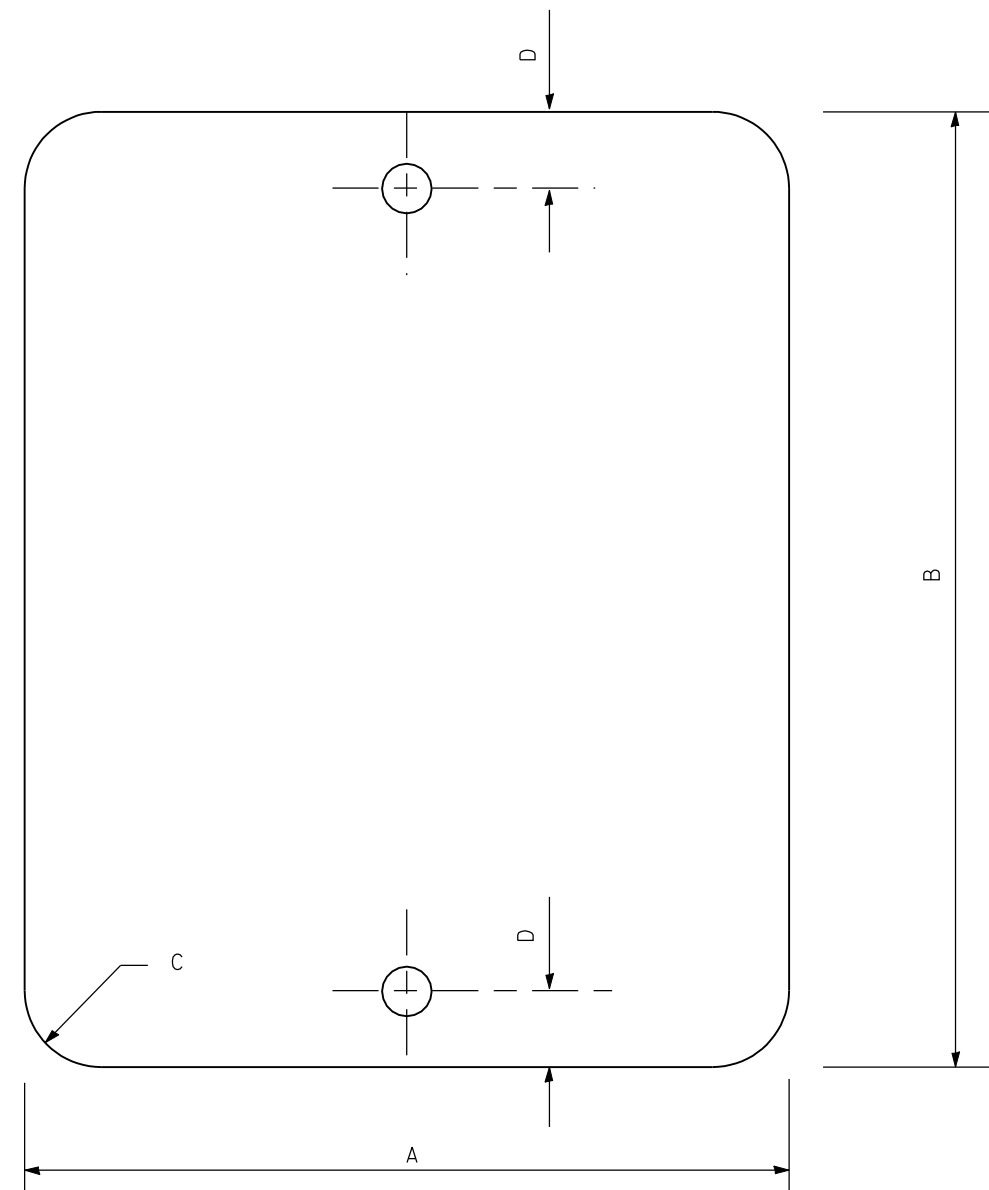
REFLECTOR MARKER AND
MOUNTING DETAILS

(Sheet 2 of 3)

STANDARD 635011-02



DETAIL OF MOUNTING TERMINAL MARKER TO POST



STANDARD TERMINAL MARKER

SIGN SIZE	DIMENSIONS			
	A	B	C	D
12x16 (305x406)	12.0 (305)	16.0 (406)	1.5 (38)	2.0 (50)

Illinois Department of Transportation
 APPROVED January 1, 2009
 ENGINEER OF OPERATIONS
 APPROVED January 1, 2009
 ENGINEER OF DESIGN AND ENVIRONMENT

ISSUED 1-1-2000

REFLECTOR MARKER AND MOUNTING DETAILS

(Sheet 3 of 3)

STANDARD 635011-02