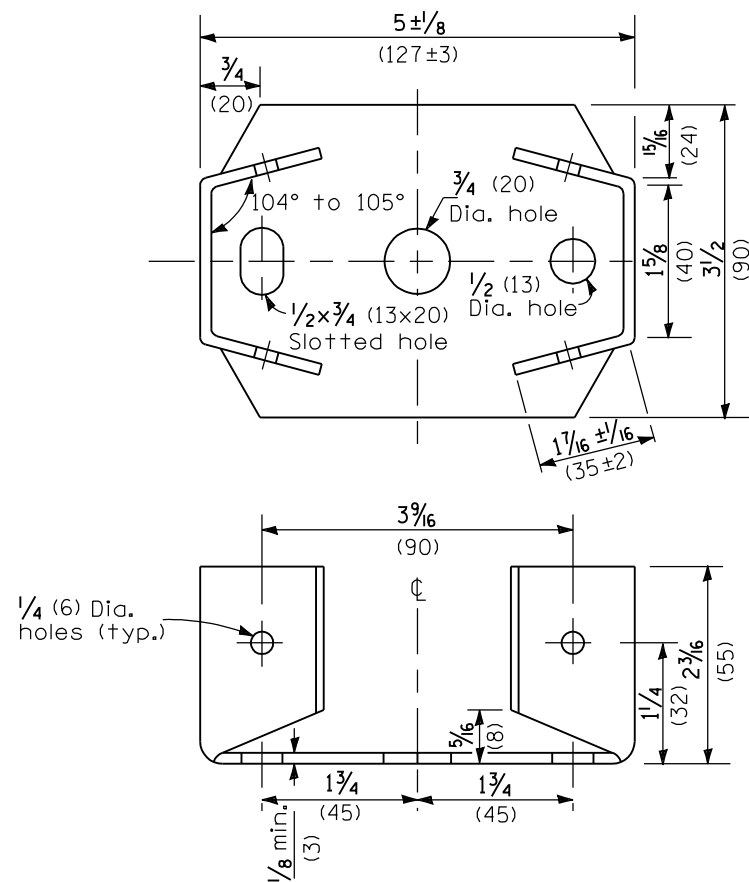
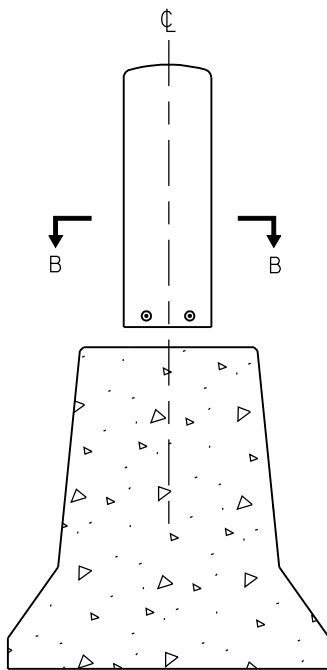


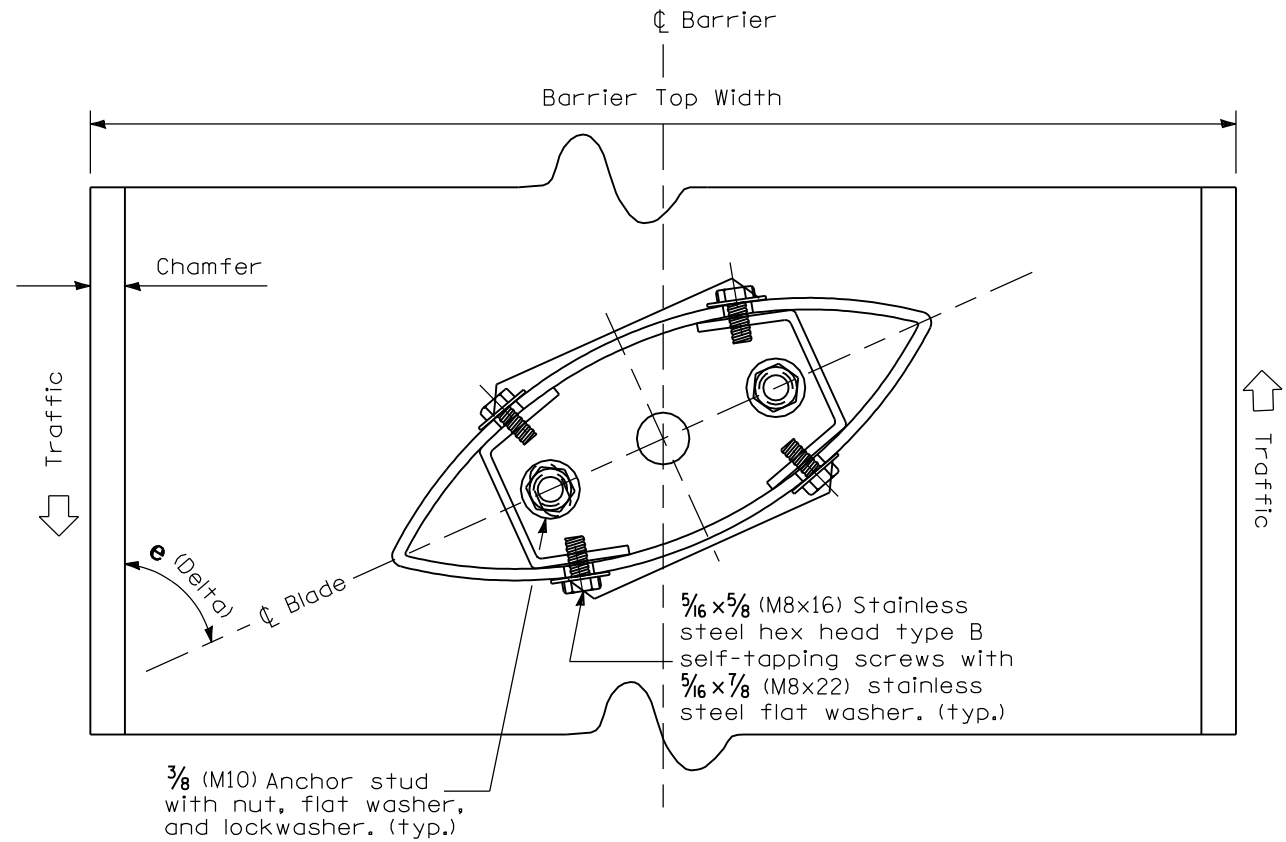
**SECTION A-A  
BLADE DETAIL**



**BASE PLATE DETAILS**



**TYPICAL INSTALLATION DETAIL**



**SECTION B-B**

MAXIMUM INSTALLATION ANGLE	
Barrier Top Width	Δ (Delta)
9 (230)	65°
17 (430)	70°
19 (480)	70°

**GENERAL NOTES**

The height, spacing, and installation angle of the glare screen blades shall be as shown on the plans.

All dimensions are in inches (millimeters) unless otherwise shown.

DATE	REVISIONS
1-1-09	Switched units to English (metric).
1-1-04	Revised max. installation angles to fit F shape barrier.

**GLARE SCREEN BLADES**

**STANDARD 638001-02**

Illinois Department of Transportation

PASSED January 1, 2009

ENGINEER OF POLICY AND PROCEDURES

APPROVED January 1, 2009

ENGINEER OF DESIGN AND ENVIRONMENT

ISSUED 1-1-07