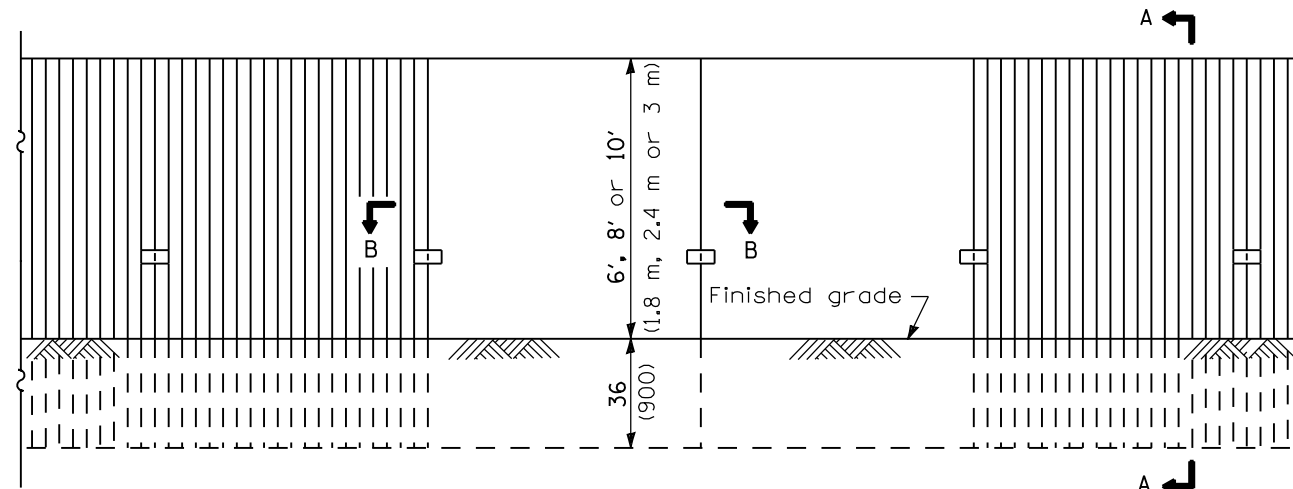
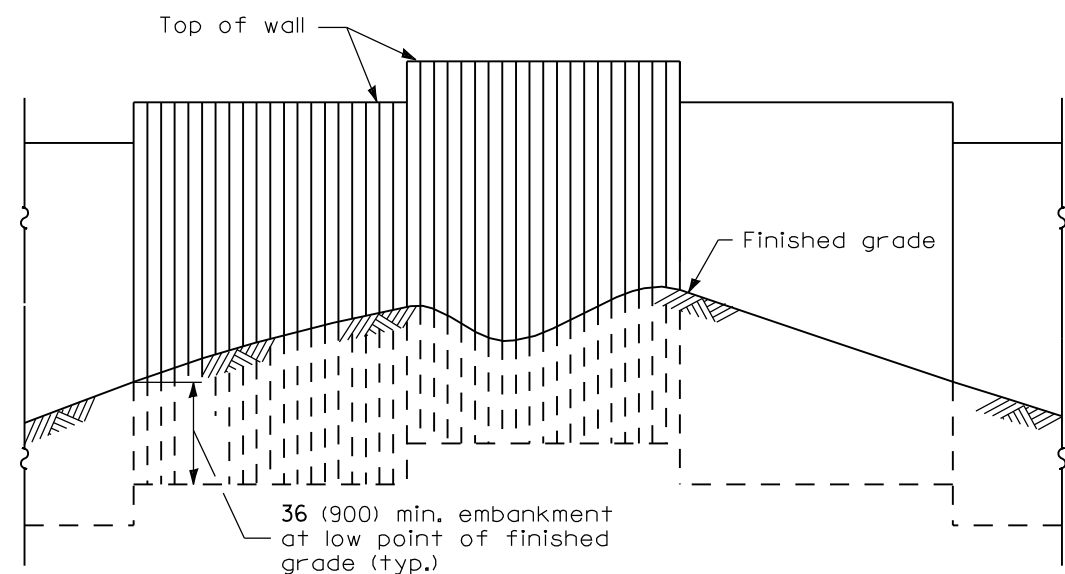


Each alternate pair of panels shall have a textured surface finish as shown, and shall be alternated with pairs having a smooth finish. The intersection of every two panels having the same finish shall point toward the road as shown.

**PLAN**

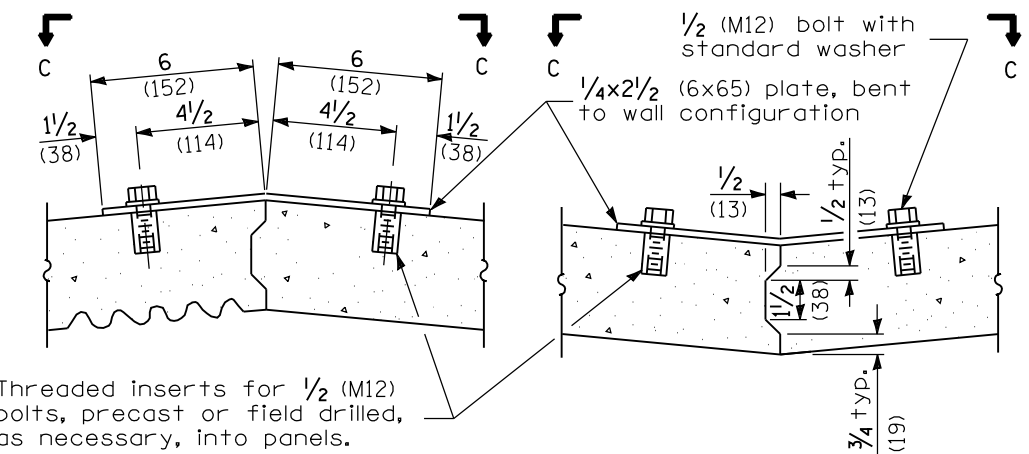


**ELEVATION**



**ELEVATION**

(Showing installation of wall in irregular ground)

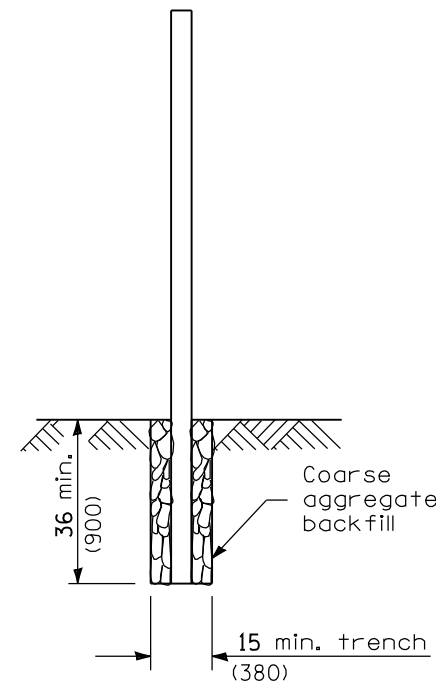


Threaded inserts for 1/2 (M12) bolts, precast or field drilled, as necessary, into panels.

Showing typical metal band connector dimensions

Showing typical shear key dimensions

**SECTION B-B**



**SECTION A-A**

**GENERAL NOTES**

Loading for 80 mph (130 km/h) wind with 30% gust factor, normal to wall.

- ALLOWABLE STRESSES:
- Concrete:  $f'_c = 3,500$  psi (24 MPa)
  - $f'_{ci} = 2,250$  psi (15 MPa)
  - Prestressing Steel:  $f'_s = 270,000$  psi (1860 MPa)
  - $f_{si} = 189,000$  psi (1300 MPa)
  - Reinforcing Steel:  $f'_y = 40,000$  psi min. (270 MPa)
  - Structural Steel:  $f_s = 20,000$  psi (138 MPa)
  - Minimum allowable soil bearing pressure: = 1.25 tsf (120 kPa)

All dimensions are in inches (millimeters) unless otherwise shown.

DATE	REVISIONS
1-1-09	Switched units to English (metric).
1-1-07	Soft converted metric reinforcement bars & corrected dimensions.

**SIGHT SCREEN  
PRECAST PRESTRESSED CONCRETE  
PANEL WALL**

(Sheet 1 of 2)

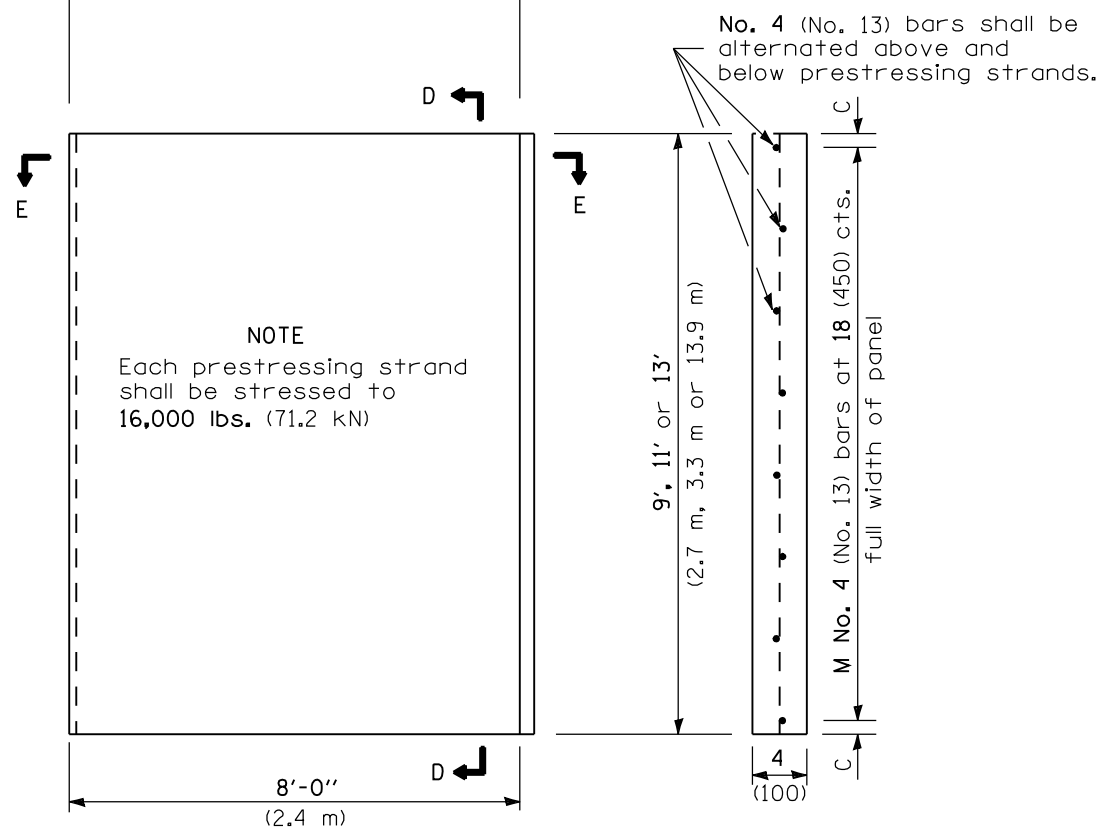
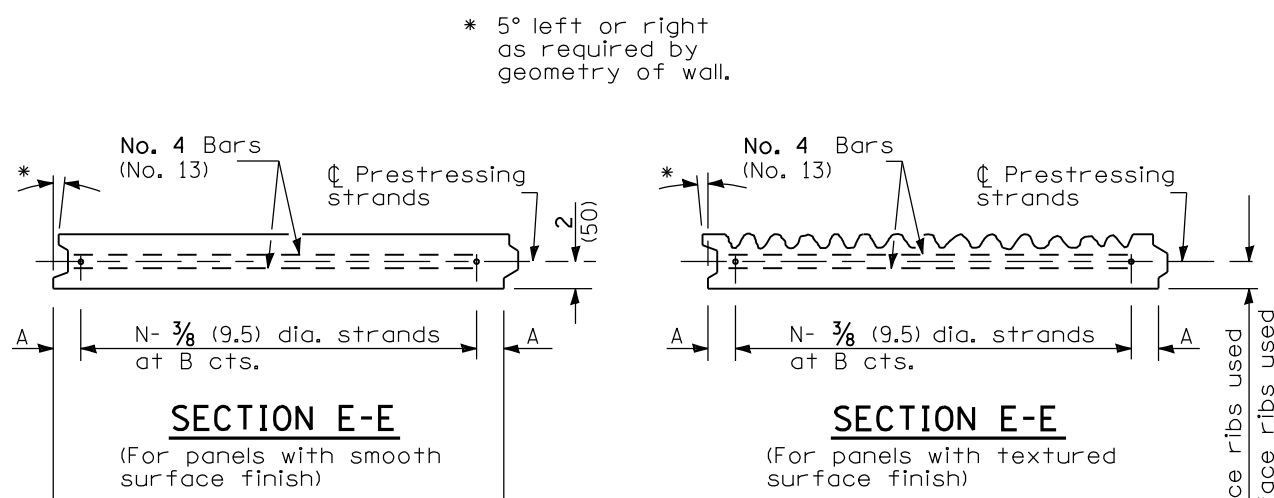
**STANDARD 639001-02**

Illinois Department of Transportation

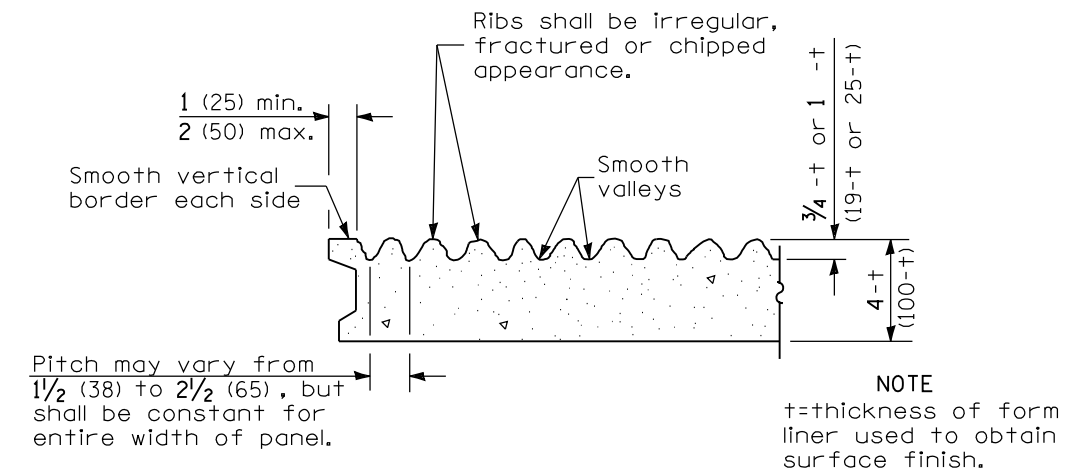
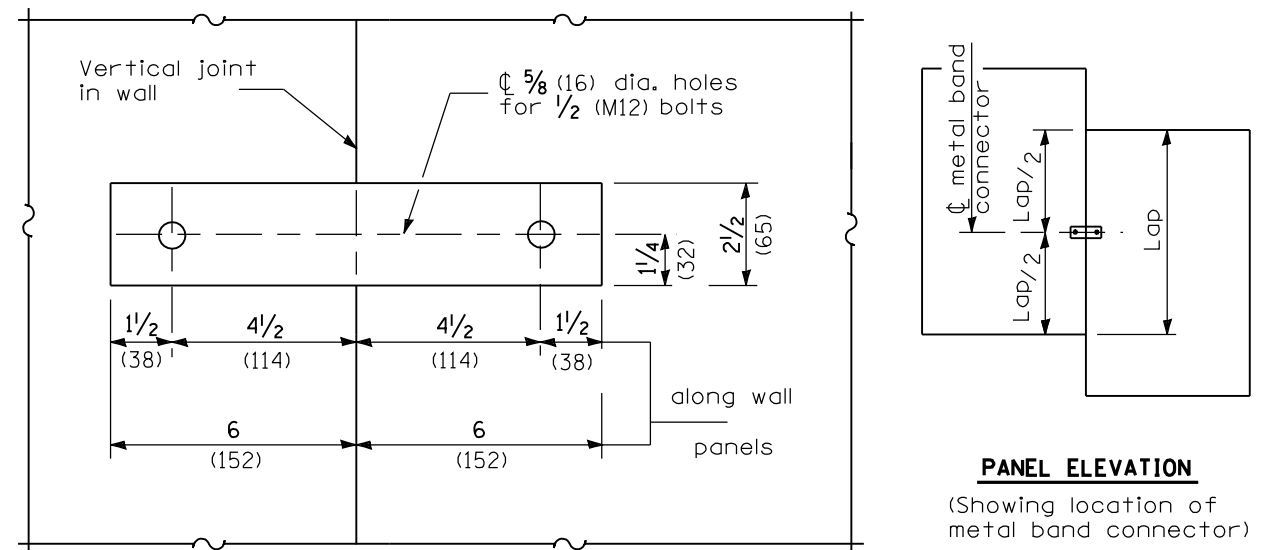
APPROVED January 1, 2009  
*Ralph E. Anderson*  
ENGINEER OF BRIDGES AND STRUCTURES

APPROVED January 1, 2009  
*Ken E. Han*  
ENGINEER OF DESIGN AND ENVIRONMENT

ISSUED 1-1-97



**STRAND and REINFORCEMENT LAYOUT**



Nominal Panel Size	A	N	B	C	M
8'-0" x 9'-0" (2.4 m x 2.7 m)	6 (150)	8	12 (300)	9 (225)	6
8'-0" x 11'-0" (2.4 m x 3.3 m)	3 (75)	11	9 (225)	3 (75)	8
8'-0" x 13'-0" (2.4 m x 3.9 m)	3 (75)	16	6 (150)	6 (150)	9

**SIGHT SCREEN  
PRECAST PRESTRESSED CONCRETE  
PANEL WALL**

(Sheet 2 of 2)

**STANDARD 639001-02**

Illinois Department of Transportation

APPROVED January 1, 2009  
*Ralph E. Anderson*  
ENGINEER OF BRIDGES AND STRUCTURES

APPROVED January 1, 2009  
*Ken E. Han*  
ENGINEER OF DESIGN AND ENVIRONMENT

ISSUED 1-1-97