

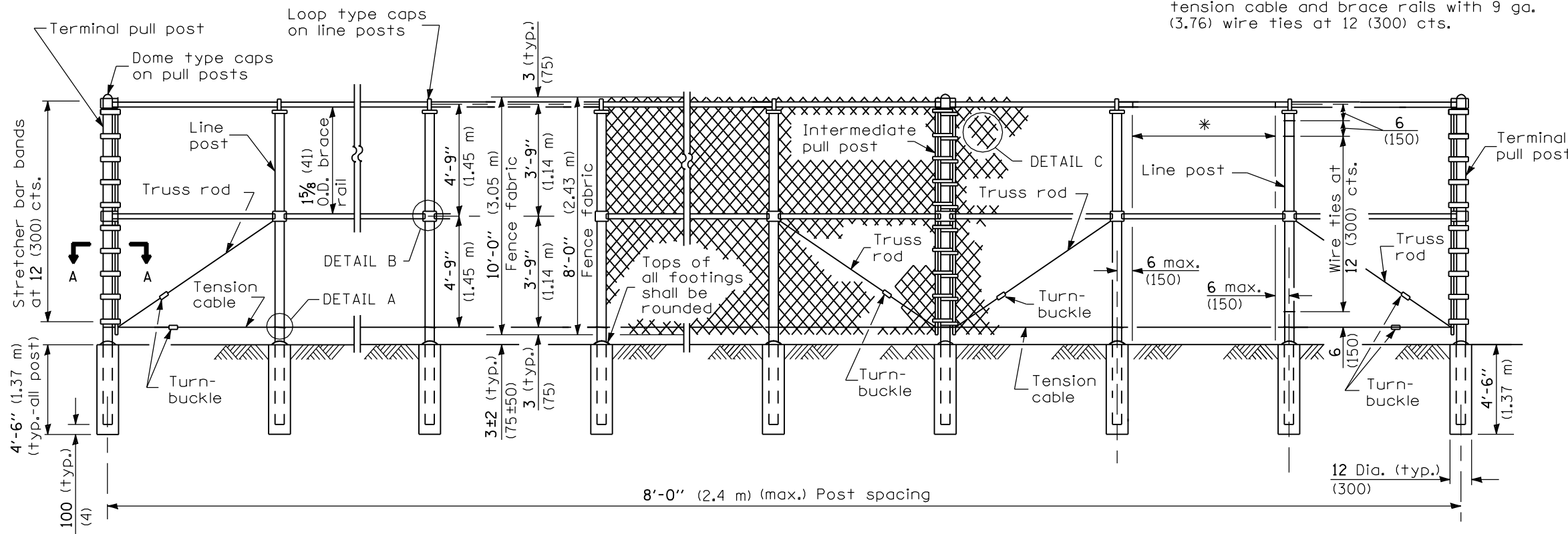
ELEVATION - 6' (1.83 m) FENCE

(Looking toward highway)

* Fence fabric shall be tied to all line posts, tension cable and brace rails with 9 ga. (3.76) wire ties at 12 (300) cts.

FENCE HEIGHT	POST SECTION (O.D.)	lbs./ft. (kg/m)
6 ft. (1.83 m)	4 (102)	9.11 (13.6)
8 ft. (2.43 m)	4 (102)	12.51 (18.6)
10 ft. (3.05 m)	4 (102)	22.85 (34)

Post sizes other than those shown may be used subject to approval by the Engineer.



ELEVATION - 8' (2.43 m) & 10' (3.05 m) FENCES

(Looking toward highway)

GENERAL NOTES

Loading for wind 80 mph (130 km/h) with 30% gust factor. Minimum allowable soil pressure = 1.25 tsf (120 kPa).

Tension cable shall be provided with one turn buckle between each pair of pull posts.

All dimensions are in inches (millimeters) unless otherwise shown.

DATE	REVISIONS
1-1-09	Switched units to English (metric).
	Revised General Notes.
1-1-97	Renum. Standard 2365-6.

SIGHT SCREEN CHAIN LINK FENCE

(Sheet 1 of 2)

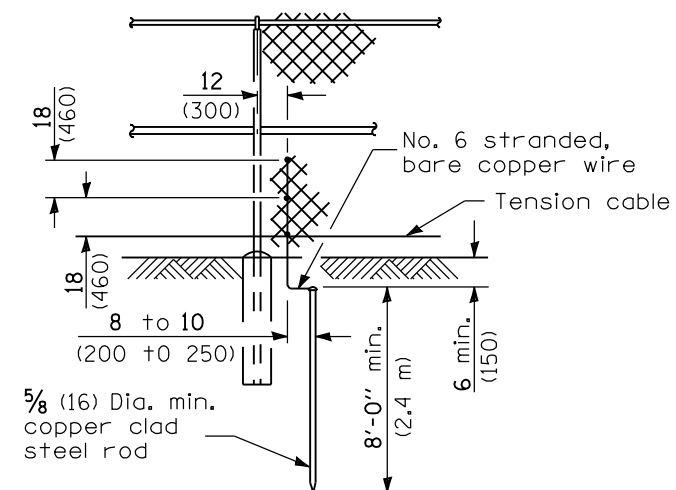
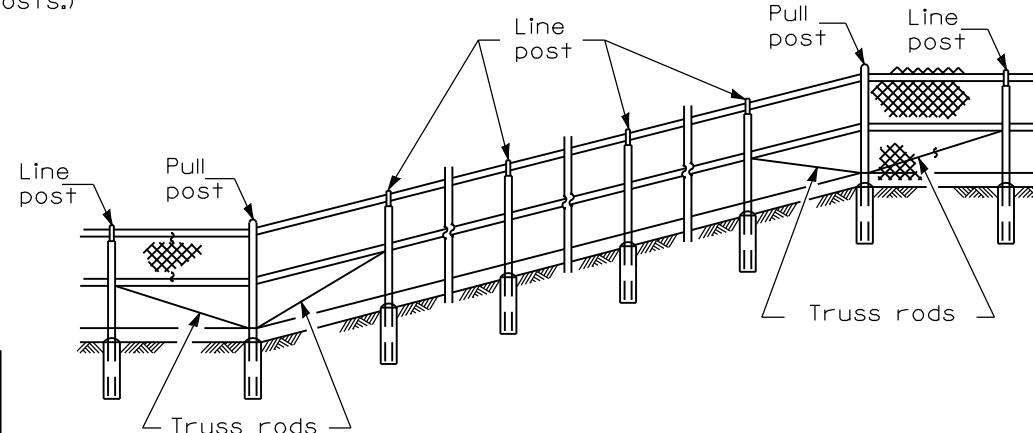
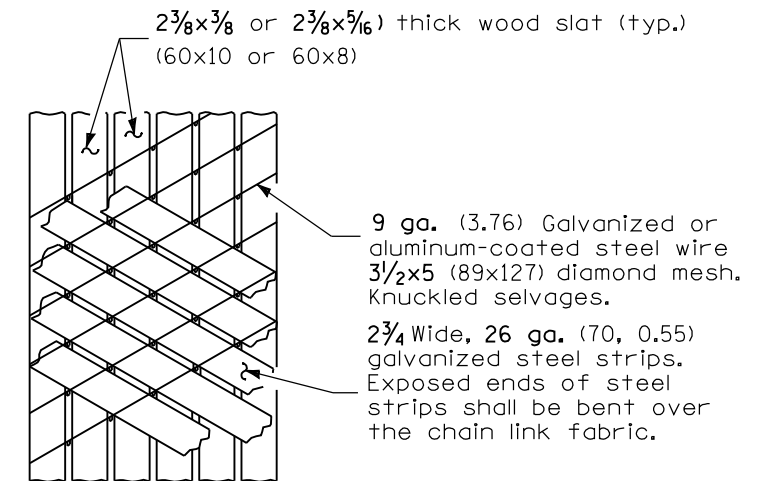
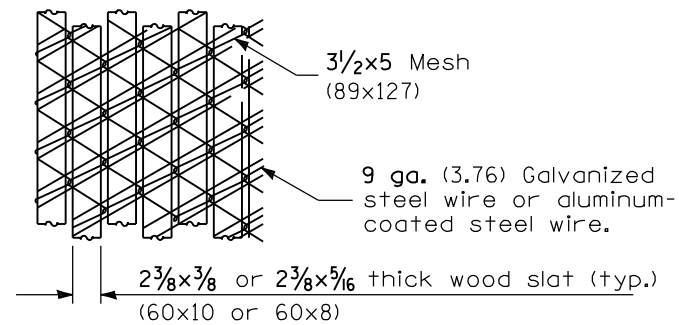
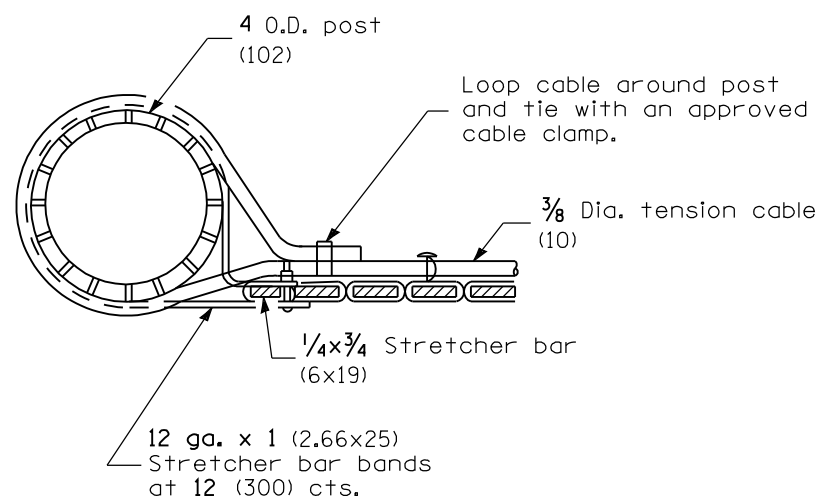
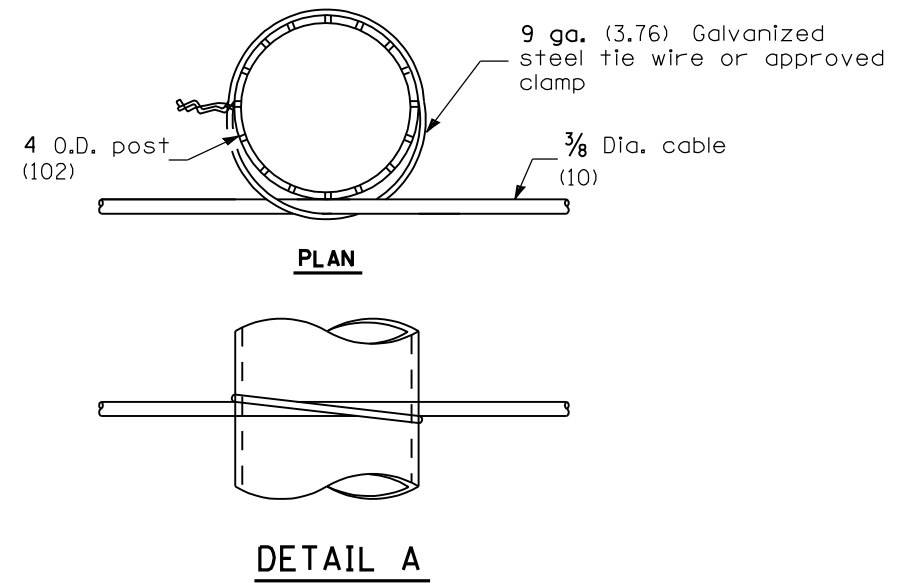
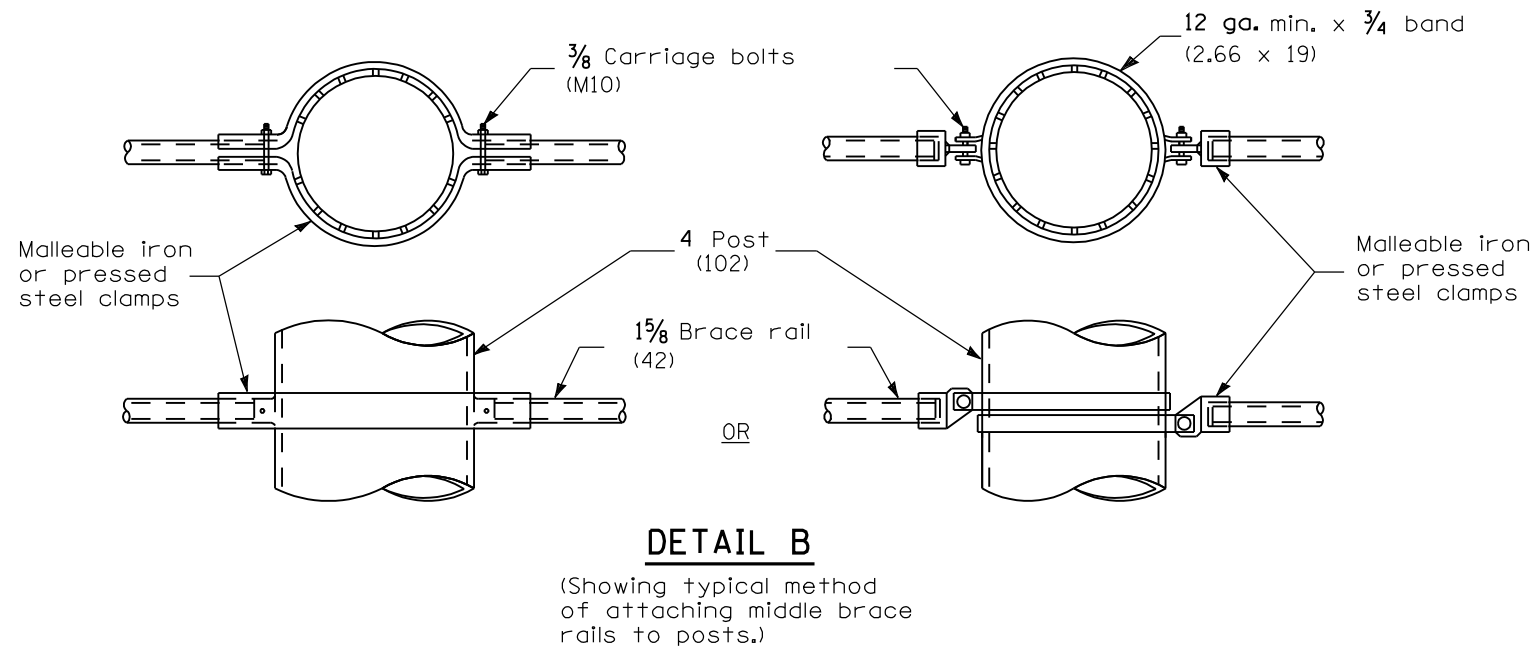
STANDARD 640001-01

Illinois Department of Transportation

APPROVED January 1, 2009
Ralph E. Anderson
 ENGINEER OF BRIDGES AND STRUCTURES

APPROVED January 1, 2009
Ken E. Han
 ENGINEER OF DESIGN AND ENVIRONMENT

ISSUED 1-1-97



Illinois Department of Transportation
 APPROVED January 1, 2009
Ralph E. Anderson
 ENGINEER OF BRIDGES AND STRUCTURES
 APPROVED January 1, 2009
Ken E. Han
 ENGINEER OF DESIGN AND ENVIRONMENT
 ISSUED 1-1-97

**SIGHT SCREEN
 CHAIN LINK FENCE**
 (Sheet 2 of 2)
STANDARD 640001-01