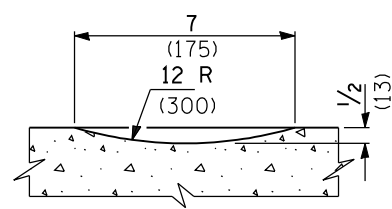
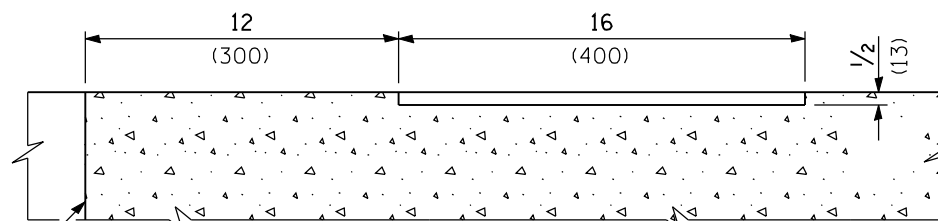


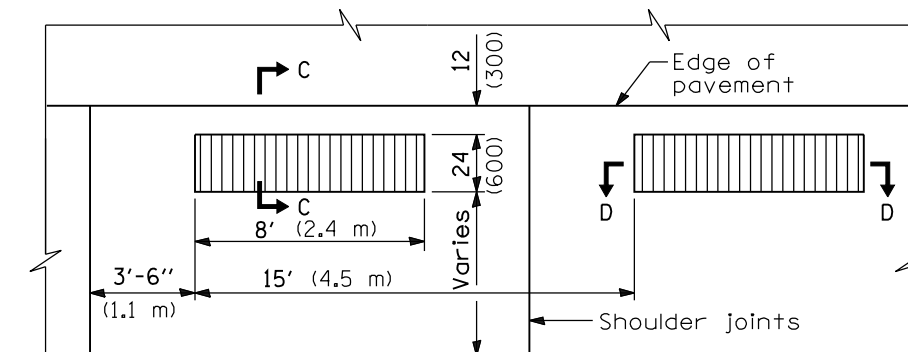
PLAN



SECTION A-A

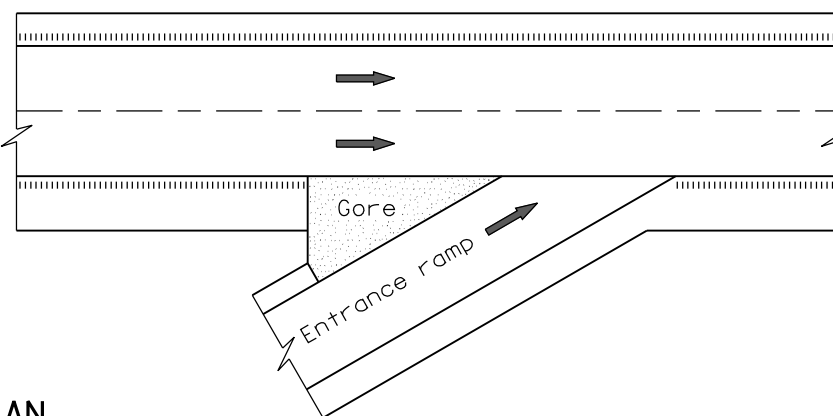
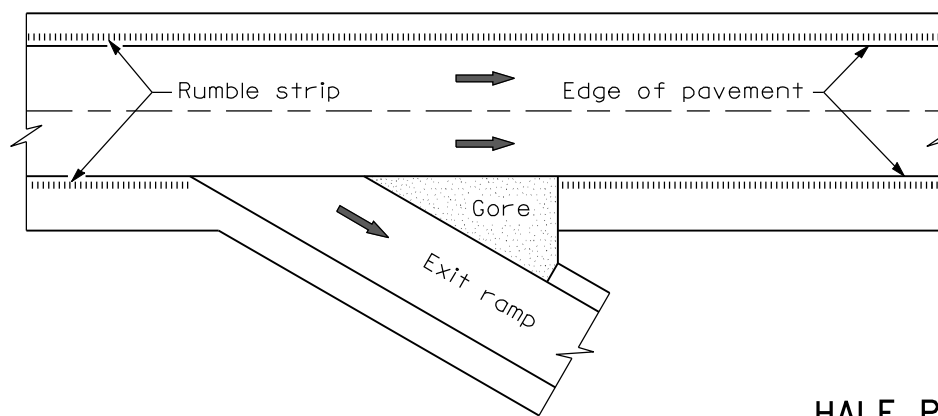


SECTION B-B



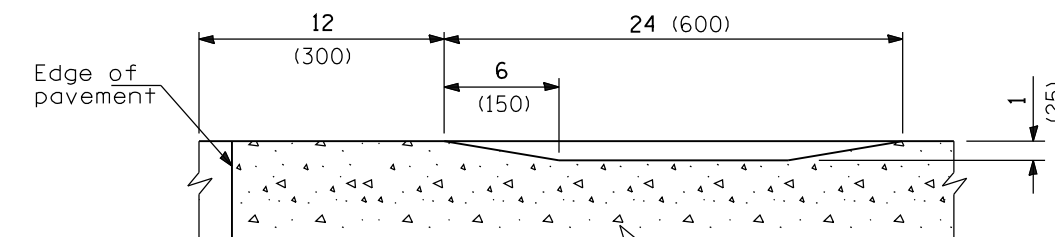
PLAN

(Formed Alternate for PCC Shoulders)

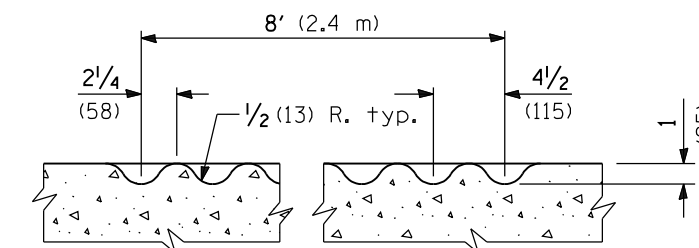


HALF PLAN

TYPICAL APPLICATION AT AN INTERCHANGE



SECTION C-C



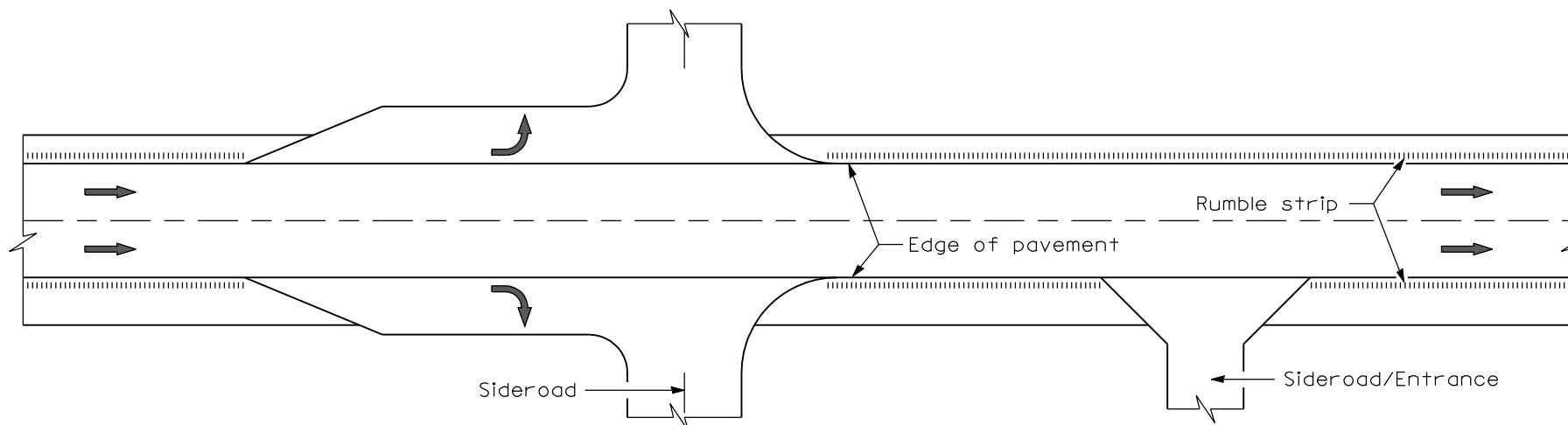
SECTION D-D

GENERAL NOTES

On Portland cement concrete shoulders, no shoulder rumble strip shall be located closer than 6 (150) to a transverse joint.

Omit shoulder rumble strips across structures.

All dimensions are in inches (millimeters) unless otherwise shown.



HALF PLAN

TYPICAL APPLICATION AT AN INTERSECTION OR ENTRANCE

DATE	REVISIONS
1-1-09	Switched units to English (metric).
1-1-03	Revised rumble strip design and renumbered Std. 482101

SHOULDER RUMBLE STRIPS

STANDARD 642001-01

Illinois Department of Transportation

PASSED January 1, 2009

ENGINEER OF POLICY AND PROCEDURES

APPROVED January 1, 2009

ENGINEER OF DESIGN AND ENVIRONMENT

ISSUED 1-1-03