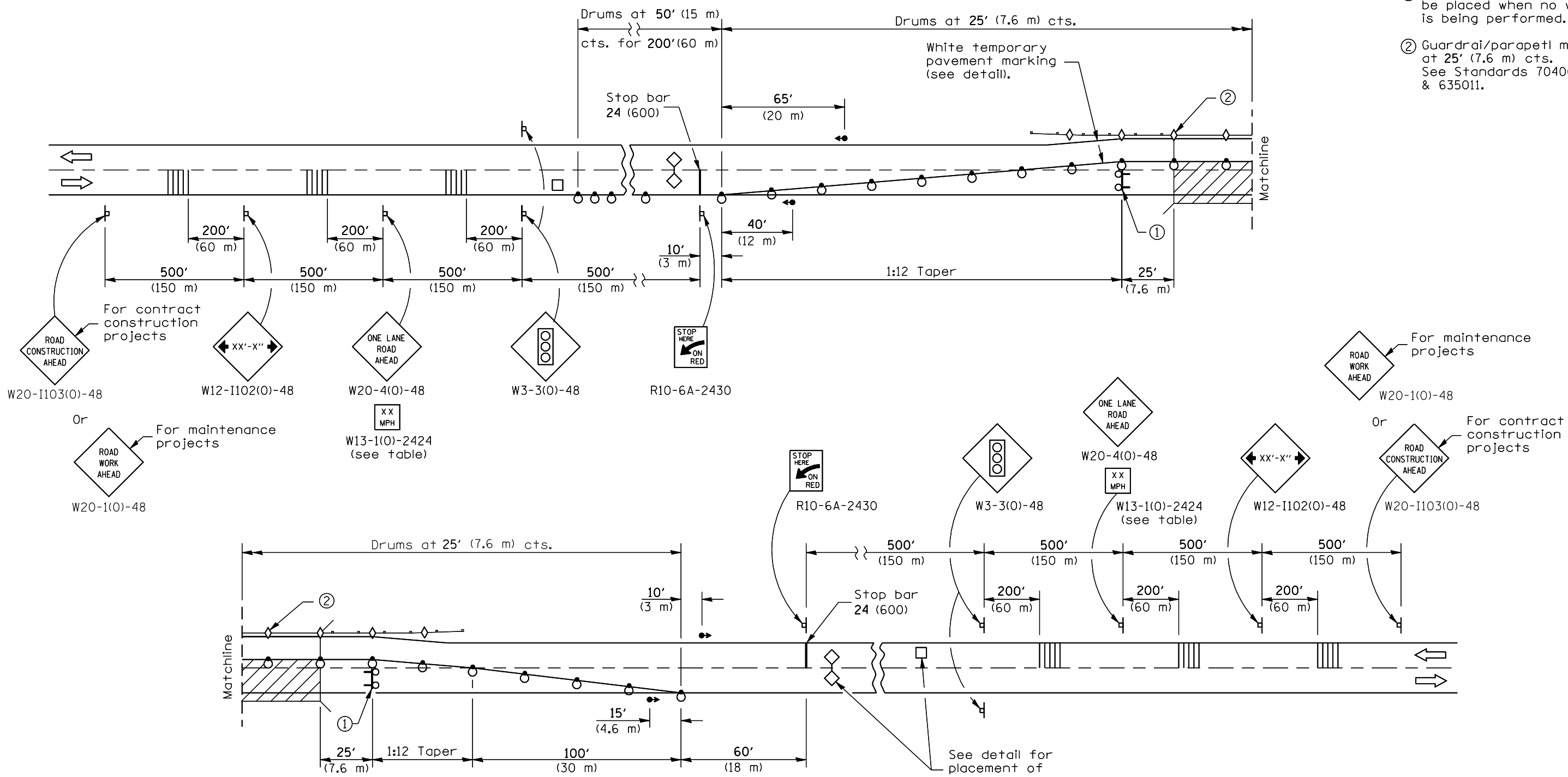


- ① Type III barricade to be placed when no work is being performed.
- ② Guardrail/parapet markers at 25' (7.6 m) cts. See Standards 704001 & 635011.



Type III barricade with flashing lights

SYMBOLS

- Work area
- Sign
- Traffic signal
- Detector loops
- Type III barricade with flashing lights
- Drum with steady burning light
- Temporary rumble strip (when specified)
- Double vertical panel (see detail)
- Crystal, bidirectional parapet/guardrail marker

See Sheet 2 for GENERAL NOTES

Illinois Department of Transportation

APPROVED January 1, 2009  
ENGINEER OF OPERATIONS

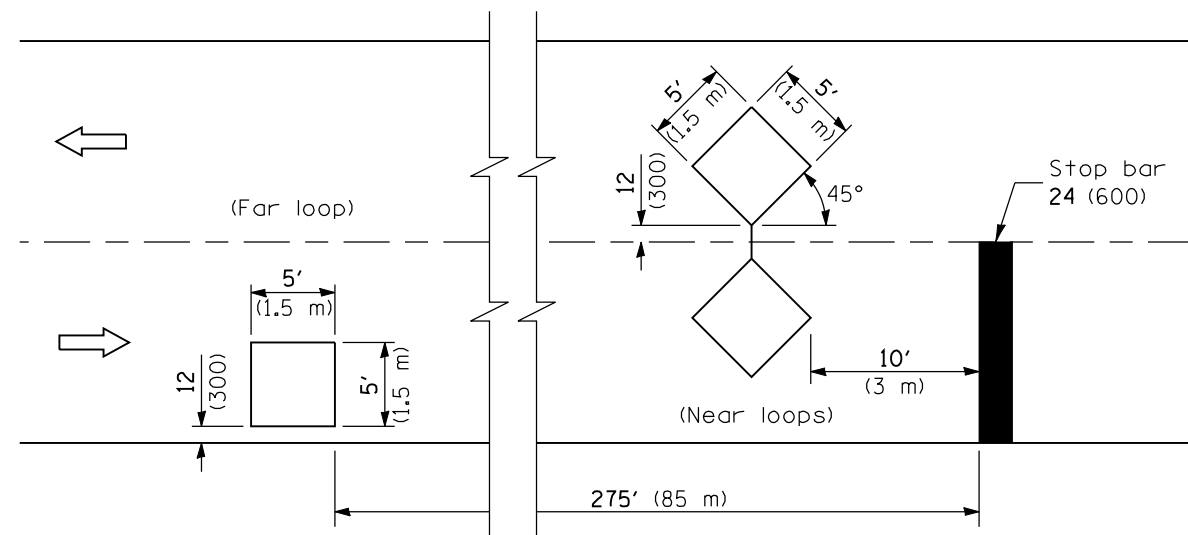
APPROVED January 1, 2009  
ENGINEER OF DESIGN AND ENVIRONMENT

ISSUED 1-1-97

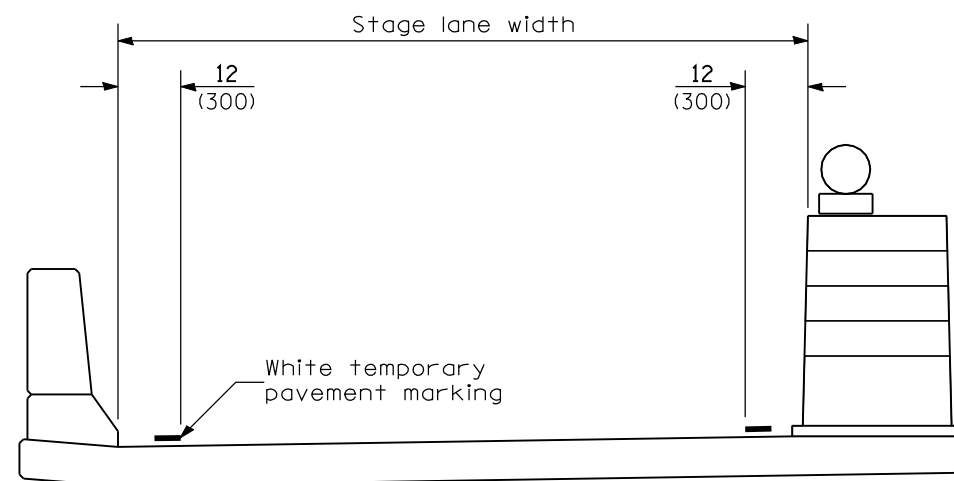
DATE	REVISIONS
1-1-09	Completely revised Standard. Switched units to English (metric).
1-1-05	Revised notes, deleted pavement markers and advisory speed sign.

LANE CLOSURE, 2L, 2W,  
BRIDGE REPAIR,  
FOR SPEEDS > 45 MPH  
(Sheet 1 of 2)

**STANDARD 701316-04**



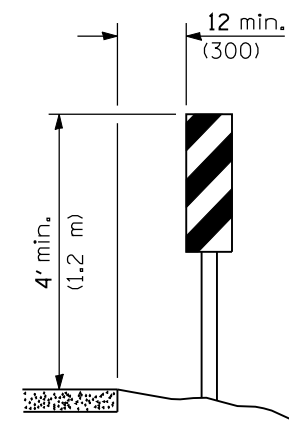
**DETECTOR LOOPS**



**TEMPORARY PAVEMENT MARKING**

TRAFFIC SIGNAL SEQUENCE						
PHASE	A			B		
	1	2	3	4	5	6
NORTHBOUND OR EASTBOUND	G	Y	R	R	R	R
SOUTHBOUND OR WESTBOUND	R	R	R	G	Y	R

ADVISORY SPEED LIMIT	
NORMAL POSTED SPEED	ADVISORY SPEED
55 - 45 mph	40 mph
40 mph	35 mph
35 - 30 mph	30 mph



**VERTICAL PANELS**  
(Post mounted, one each side)

**GENERAL NOTES**

This Standard is used where, at any time any vehicle, equipment, workers or their activities will encroach on one lane of a bridge and traffic signals are required.

When traffic signals are not in operation, flaggers shall be used and traffic control devices shall conform to Standard 701201 or 701206.

Bi-directional lights shall be used at night along the centerline where the work area is separated from the traveled lane using barricades or drums. Monodirectional lights shall be used at night on all other barricades or drums.

All dimensions are in inches (millimeters) unless otherwise shown.

**LANE CLOSURE, 2L, 2W,  
BRIDGE REPAIR,  
FOR SPEEDS > 45 MPH**  
(Sheet 2 of 2)

**STANDARD 701316-04**

Illinois Department of Transportation

APPROVED January 1, 2008  
ENGINEER OF OPERATIONS

APPROVED January 1, 2008  
ENGINEER OF DESIGN AND ENVIRONMENT

ISSUED 1-1-97