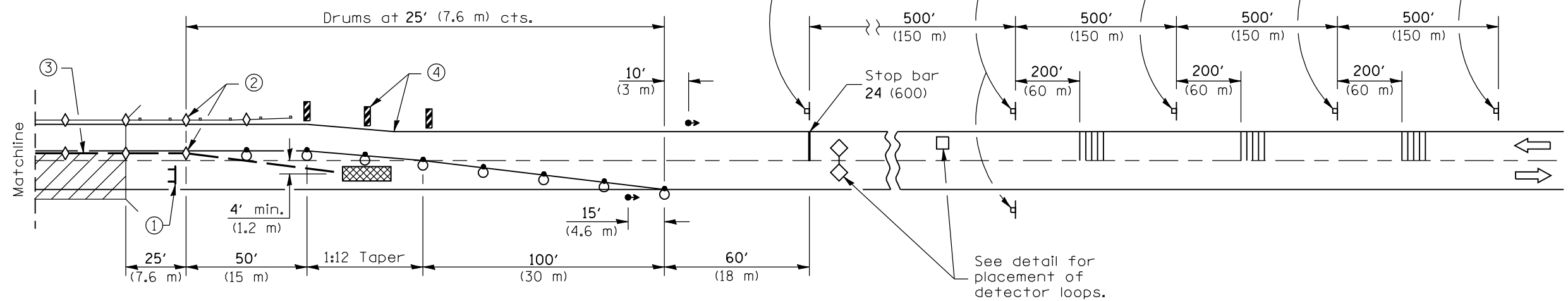
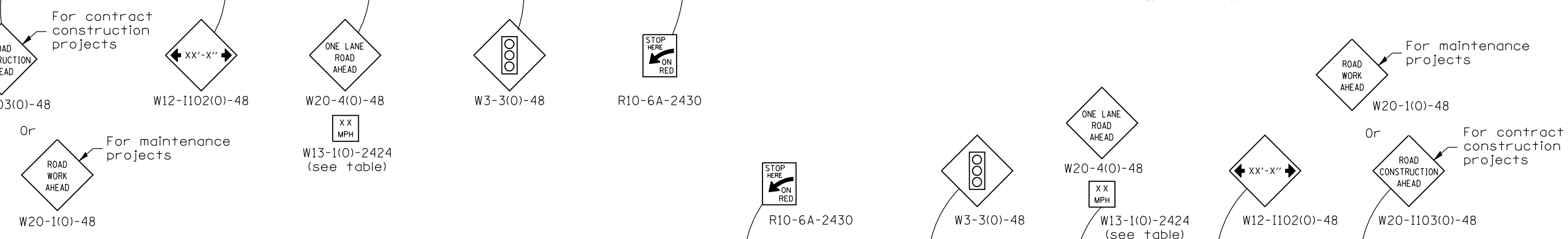
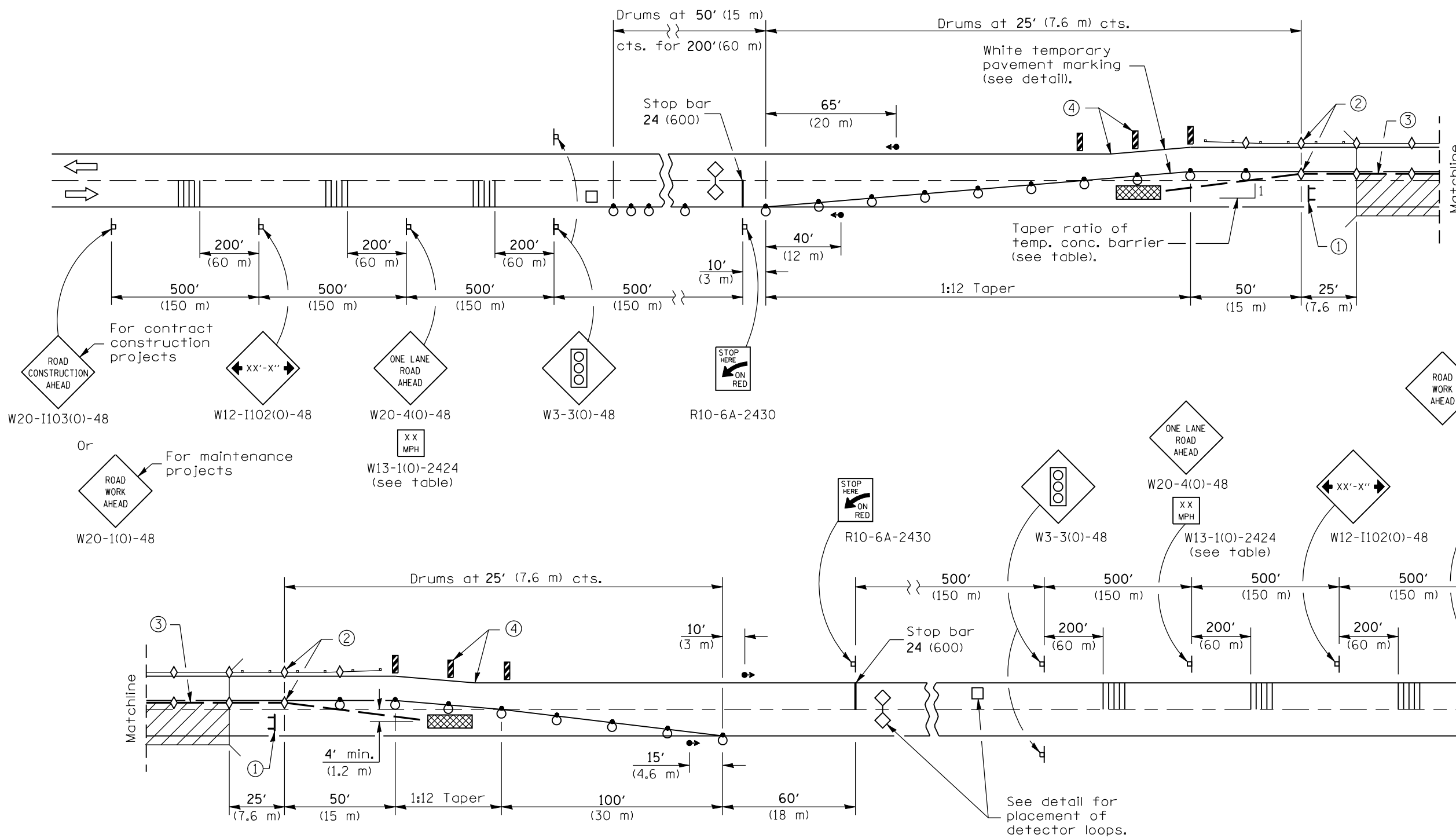


- ① Type III barricade to be placed when no work is being performed.
- ② Barrier wall/guardrail markers at 25' (7.6 m) cts. See Standards 704001 & 635011.
- ③ When temp. bridge rail is specified, it shall be connected to the temp. conc. barrier using a traffic barrier terminal Type 11.
- ④ These vertical panels at 25' (7.6 m) cts. may be omitted when the guardrail, w/markers, extends to at least this point on the taper.



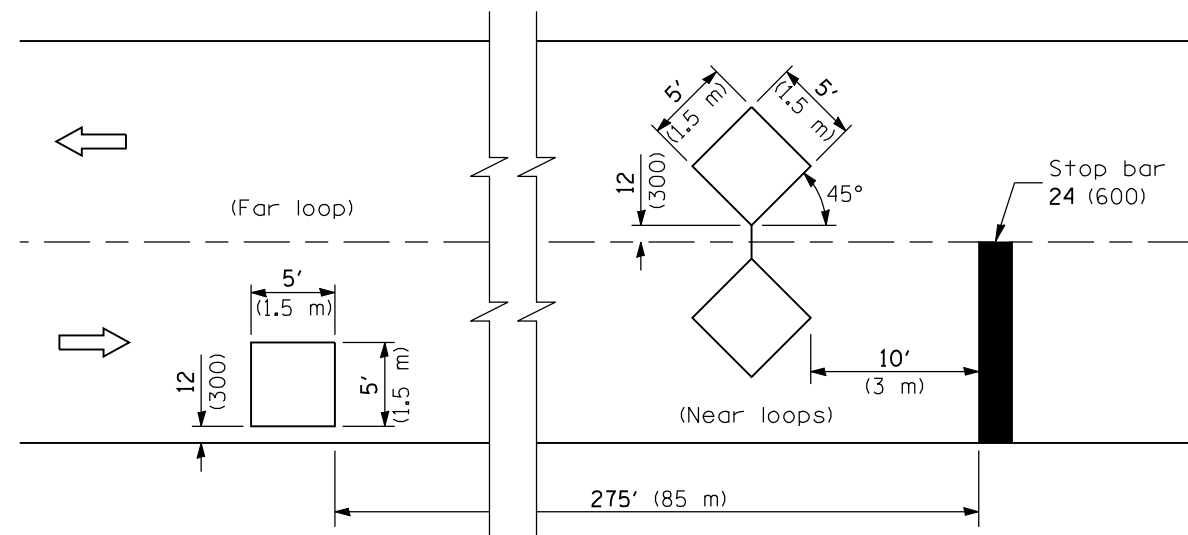
- SYMBOLS**
- Work area
  - Sign
  - Type III barricade
  - Traffic signal
  - Detector loops
  - Impact attenuator
  - Drum with steady burning light
  - Temporary concrete barrier
  - Temporary rumble strip (when specified)
  - Double vertical panel (see detail)
  - Crystal, bidirectional barrier wall/guardrail marker

See Sheet 2 for GENERAL NOTES

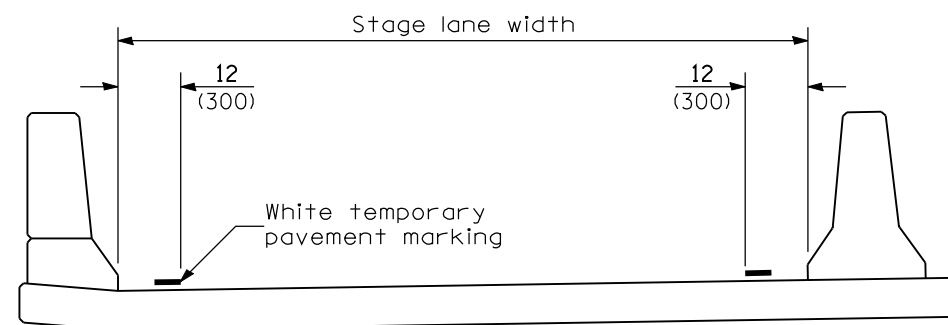
Illinois Department of Transportation  
 APPROVED January 1, 2009  
 ENGINEER OF OPERATIONS  
 APPROVED January 1, 2009  
 ENGINEER OF DESIGN AND ENVIRONMENT

DATE	REVISIONS
1-1-09	Switched units to English (metric).
1-1-08	Corrected sign No.'s.
	Completely revised Standard.

**LANE CLOSURE, 2L, 2W, BRIDGE REPAIR WITH BARRIER**  
 (Sheet 1 of 2)  
**STANDARD 701321-10**



**DETECTOR LOOPS**

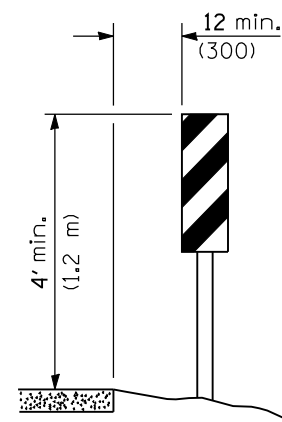


**TEMPORARY PAVEMENT MARKING**

TRAFFIC SIGNAL SEQUENCE						
PHASE	A			B		
INTERVAL	1	2	3	4	5	6
NORTHBOUND OR EASTBOUND	G	Y	R	R	R	R
SOUTHBOUND OR WESTBOUND	R	R	R	G	Y	R

TEMPORARY CONCRETE BARRIER	
NORMAL POSTED SPEED	TAPER RATIO
40 mph AND ABOVE	12:1
BELOW 40 mph	8:1

ADVISORY SPEED LIMIT	
NORMAL POSTED SPEED	ADVISORY SPEED
55 - 45 mph	40 mph
40 mph	35 mph
35 - 30 mph	30 mph



**VERTICAL PANELS**  
(Post mounted, one each side)

**GENERAL NOTES**

This Standard is used where, at any time, any vehicle, equipment, workers, or their activities will encroach on one lane of a bridge. Traffic signals and a positive barrier are required.

Traffic signals shall be operational only when all traffic controls are in place. When traffic signals are not in operation, flaggers shall be used and traffic control shall conform to Standard 701201 or 701206.

Temporary concrete barrier shall be according to Standard 704001.

All dimensions are in inches (millimeters) unless otherwise shown.

Illinois Department of Transportation

APPROVED January 1, 2008  
ENGINEER OF OPERATIONS

APPROVED January 1, 2008  
ENGINEER OF DESIGN AND ENVIRONMENT

ISSUED 1-1-97

**LANE CLOSURE, 2L, 2W,  
BRIDGE REPAIR WITH BARRIER**

(Sheet 2 of 2)

**STANDARD 701321-10**