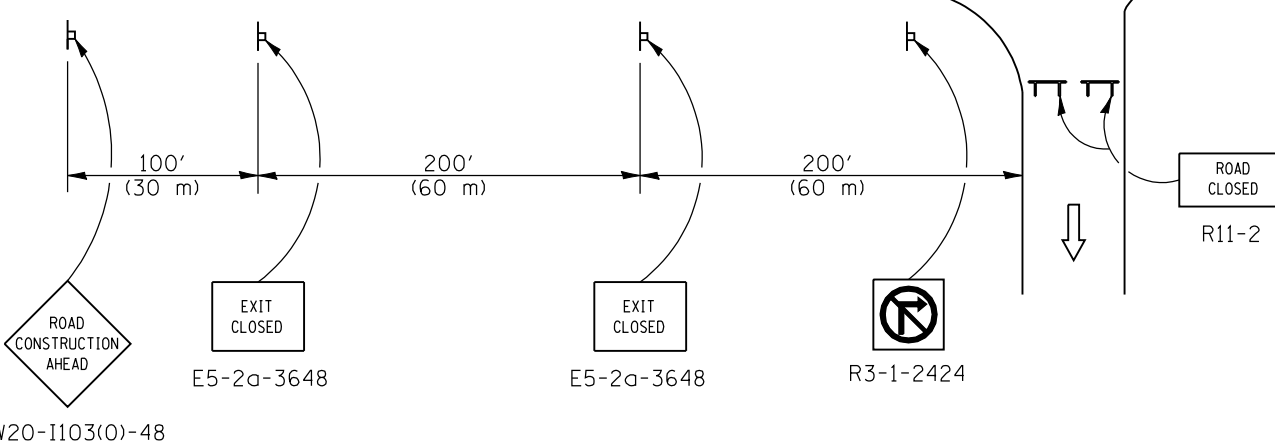
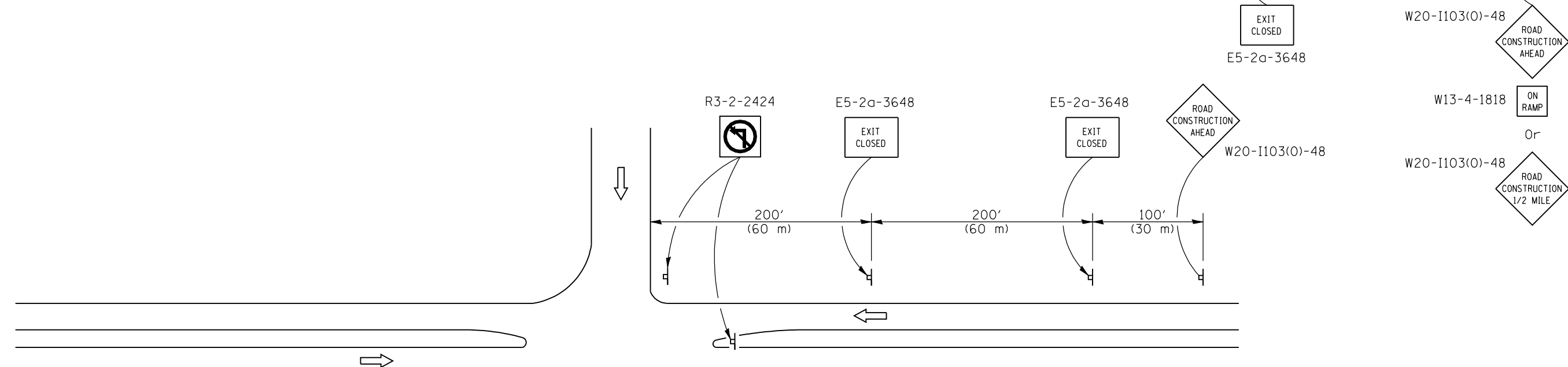


EXIT RAMP CLOSURE



SYMBOLS

- Sign
- Type III barricade
- Drum with steady burning light

All dimensions are in inches (millimeters) unless otherwise shown.

ENTRANCE RAMP CLOSURE

Illinois Department of Transportation

APPROVED January 1, 2009
 ENGINEER OF OPERATIONS
 APPROVED January 1, 2009
 ENGINEER OF DESIGN AND ENVIRONMENT

ISSUED 1-1-09

DATE	REVISIONS
1-1-09	New Standard.

**RAMP CLOSURE
 FREEWAY/EXPRESSWAY**

STANDARD 701451