

**CASE I**  
(Signs required for both directions)

SIGN SPACING	
Posted Speed	Sign Spacing
55 (4)	500' (150 m)
50-45 (4)	350' (100 m)
<45	200' (60 m)

**SYMBOLS**

- Arrow board
- Work area
- Barricade or drum with flashing light
- Flagger with traffic control sign
- Cone, drum or barricade (Cones for daytime use only)
- Sign on portable or permanent support

- ① Refer to SIGN SPACING TABLE for distances.
- ② Required for speeds > 40 mph (70 km/h).
- ③ Required if work exceeds 500' (164 m) or 1 block.
- ④ For speeds exceeding 45 mph (80 km/h) contact the District Operations Office for approval of sign spacing.
- ⑤ Cones at 25' (8 m) centers for 250' (75 m). Additional cones may be placed at 15 m (50') centers. When drums or type I or II barricades are used, the interval between devices may be doubled.
- ⑥ For approved sideroad closures.
- ⑦ Cones, drums or barricades at 20' (6 m) centers in taper.

**GENERAL NOTES**

This Standard is used to close one lane of an urban, two lane, two way roadway with a bidirectional turn lane.

Case I applies when no workers are present. When workers are present, two lanes shall be closed and traffic control shall be according to Standard 701501.

Calculate L as follows:

SPEED LIMIT	FORMULAS	
40 mph (70 km/h) or less:	English $L = \frac{WS^2}{60}$	(Metric) $L = \frac{WS^2}{150}$

80 km/h (45 mph) or greater:	$L = (W)(S)$	$L = 0.65(W)(S)$
------------------------------	--------------	------------------

W = Width of offset in feet (meters).

S = Normal posted speed mph (km/h).

All dimensions are in inches (millimeters) unless otherwise shown.

Illinois Department of Transportation

APPROVED January 1, 2009  
ENGINEER OF OPERATIONS

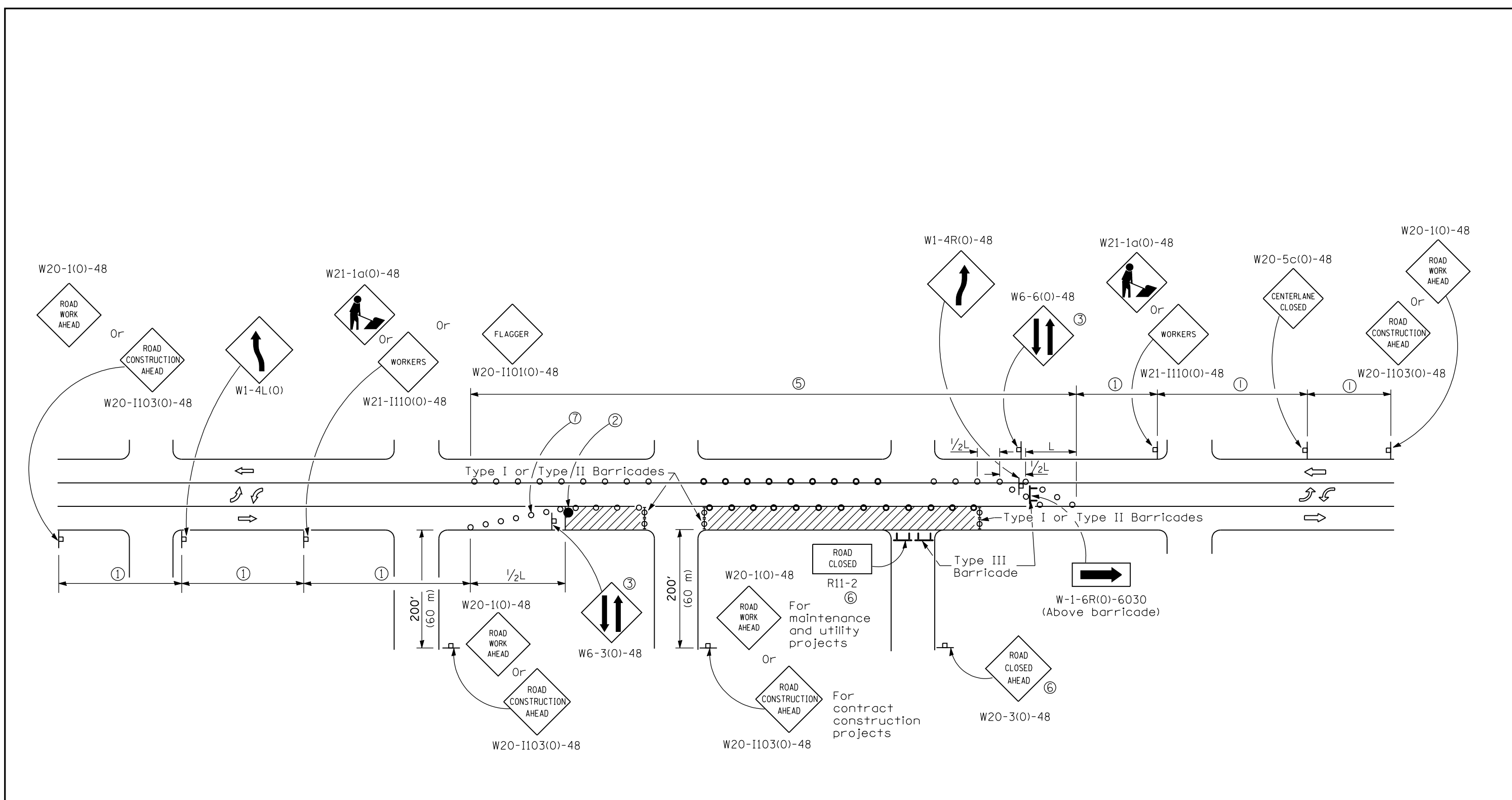
APPROVED January 1, 2009  
ENGINEER OF DESIGN AND ENVIRONMENT

ISSUED 1-1-10

DATE	REVISIONS
1-1-09	Switched units to English (metric).
1-1-08	Corrected sign No.'s.
	Added note ⑦

**URBAN LANE CLOSURE,  
2L, 2W, WITH BIDIRECTIONAL  
LEFT TURN LANE**  
(Sheet 1 of 2)

**STANDARD 701502-03**



**CASE II**

Illinois Department of Transportation  
 APPROVED January 1, 2009  
 ENGINEER OF OPERATIONS  
 APPROVED January 1, 2009  
 ENGINEER OF DESIGN AND ENVIRONMENT

URBAN LANE CLOSURE,  
 2L, 2W, WITH BIDIRECTIONAL  
 LEFT TURN LANE  
 (Sheet 2 of 2)  
**STANDARD 701502-03**